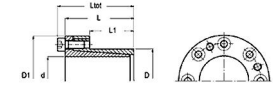




MBA

Assemblies - Locking - Flanged



Suitable for locking sprockets, pulleys, eccentric shafts.

Locks components with a bore of (D) to shafts with a diameter of (d).

C60 Steel (060A62).

Outer ring expands whilst inner ring contracts. Flange eliminates axial movement of secured component.

During tightening of the screws, the hub must be able to perform axial movement.

Clearance h8 / H8. Surface roughness Rt max 10um shaft / hub.

Assemblies - Locking - Flanged

Part Number	ID (d) x OD (D) mm	D1 mm	Ltot mm	L1 mm	L mm	Transmittable Torque (T) Nm	Transmittable Axial Force kN	Contact Pressure Shaft pw N/mm2	Contact Pressure Hub pN N/mm2	Tightening Torque (TA) Nm
PSV2010.1-10	10 x 16	29.0 <i>1.142</i>	31.0 <i>1.220</i>	14.0 <i>0.551</i>	27.0 <i>1.063</i>	50	9	125	78	5
# PSV2010.1-11	11 x 18	32.0 <i>1.260</i>	32.0 <i>1.260</i>	14.0 <i>0.551</i>	28.0 <i>1.102</i>	50	9	114	70	5
# PSV2010.1-12	12 x 18	32.0 <i>1.260</i>	32.0 <i>1.260</i>	14.0 <i>0.551</i>	28.0 <i>1.102</i>	60	9	104	70	5

Indicates item not stocked at time of printing - Please enquire for lead time

E&OE Pricing and all details subject to change without notice - Copyright Miniature Bearings Australia Pty Ltd

MBA Size Listings are a guide to sizes only and must not be solely relied on for critical design information.

Assemblies - Locking - Flanged

Part Number	ID (d) x OD (D) mm	D1 mm	Ltot mm	L1 mm	L mm	Transmittable Torque (T) Nm	Transmittable Axial Force kN	Contact Pressure Shaft pw N/mm2	Contact Pressure Hub pN N/mm2	Tightening Torque (TA) Nm
# PSV2010.1-14	14 x 23	38.0 <i>1.496</i>	32.0 <i>1.260</i>	14.0 <i>0.551</i>	28.0 <i>1.102</i>	70	9	89	54	5
# PSV2010.1-15	15 x 24	44.0 <i>1.732</i>	43.0 <i>1.693</i>	16.0 <i>0.630</i>	37.0 <i>1.457</i>	170	22	158	98	5
# PSV2010.1-16	16 x 24	44.0 <i>1.732</i>	43.0 <i>1.693</i>	16.0 <i>0.630</i>	37.0 <i>1.457</i>	180	22	148	98	17
# PSV2010.1-18	18 x 26	47.0 <i>1.850</i>	45.0 <i>1.772</i>	18.0 <i>0.709</i>	39.0 <i>1.535</i>	200	22	117	81	17
# PSV2010.1-19	19 x 27	49.0 <i>1.929</i>	45.0 <i>1.772</i>	18.0 <i>0.709</i>	39.0 <i>1.535</i>	210	22	111	78	17
# PSV2010.1-20	20 x 28	50.0 <i>1.969</i>	45.0 <i>1.772</i>	18.0 <i>0.709</i>	39.0 <i>1.535</i>	220	22	106	75	17
# PSV2010.1-22	22 x 32	54.0 <i>2.126</i>	52.0 <i>2.047</i>	25.0 <i>0.984</i>	46.0 <i>1.811</i>	250	22	77	53	17
# PSV2010.1-24	24 x 34	56.0 <i>2.205</i>	52.0 <i>2.047</i>	25.0 <i>0.984</i>	46.0 <i>1.811</i>	400	33	106	74	17
# PSV2010.1-25	25 x 34	56.0 <i>2.205</i>	52.0 <i>2.047</i>	25.0 <i>0.984</i>	46.0 <i>1.811</i>	420	33	101	74	17
# PSV2010.1-28	28 x 39	61.0 <i>2.402</i>	52.0 <i>2.047</i>	25.0 <i>0.984</i>	46.0 <i>1.811</i>	470	33	90	65	17

Indicates item not stocked at time of printing - Please enquire for lead time

E&OE Pricing and all details subject to change without notice - Copyright Miniature Bearings Australia Pty Ltd

MBA Size Listings are a guide to sizes only and must not be solely relied on for critical design information.

Assemblies - Locking - Flanged

Part Number	ID (d) x OD (D) mm	D1 mm	Ltot mm	L1 mm	L mm	Transmittable Torque (T) Nm	Transmittable Axial Force kN	Contact Pressure Shaft pw N/mm2	Contact Pressure Hub pN N/mm2	Tightening Torque (TA) Nm
# PSV2010.1-30	30 x 41	62.0 <i>2.441</i>	52.0 <i>2.047</i>	25.0 <i>0.984</i>	46.0 <i>1.811</i>	500	33	84	62	17
# PSV2010.1-32	32 x 43	65.0 <i>2.559</i>	52.0 <i>2.047</i>	25.0 <i>0.984</i>	46.0 <i>1.811</i>	710	45	106	79	17
# PSV2010.1-35	35 x 47	66.0 <i>2.598</i>	59.0 <i>2.323</i>	32.0 <i>1.260</i>	53.0 <i>2.087</i>	780	45	80	60	17
# PSV2010.1-38	38 x 50	72.0 <i>2.835</i>	59.0 <i>2.323</i>	32.0 <i>1.260</i>	53.0 <i>2.087</i>	850	45	74	56	17
# PSV2010.1-40	40 x 53	75.0 <i>2.953</i>	59.0 <i>2.323</i>	32.0 <i>1.260</i>	53.0 <i>2.087</i>	890	45	70	53	17
# PSV2010.1-42	42 x 55	78.0 <i>3.071</i>	59.0 <i>2.323</i>	32.0 <i>1.260</i>	53.0 <i>2.087</i>	940	45	67	51	41
# PSV2010.1-45	45 x 59	86.0 <i>3.386</i>	78.0 <i>3.071</i>	45.0 <i>1.772</i>	70.0 <i>2.756</i>	1850	82	85	65	41
# PSV2010.1-48	48 x 62	87.0 <i>3.425</i>	78.0 <i>3.071</i>	45.0 <i>1.772</i>	70.0 <i>2.756</i>	1980	82	80	62	41
# PSV2010.1-50	50 x 65	92.0 <i>3.622</i>	78.0 <i>3.071</i>	45.0 <i>1.772</i>	70.0 <i>2.756</i>	2060	82	77	59	41
# PSV2010.1-55	55 x 71	98.0 <i>3.858</i>	89.0 <i>3.504</i>	55.0 <i>2.165</i>	81.0 <i>3.189</i>	2550	93	37	52	41

Indicates item not stocked at time of printing - Please enquire for lead time

E&OE Pricing and all details subject to change without notice - Copyright Miniature Bearings Australia Pty Ltd

MBA Size Listings are a guide to sizes only and must not be solely relied on for critical design information.

Assemblies - Locking - Flanged

Part Number	ID (d) x OD (D) mm	D1 mm	Ltot mm	L1 mm	L mm	Transmittable Torque (T) Nm	Transmittable Axial Force kN	Contact Pressure Shaft pw N/mm2	Contact Pressure Hub pN N/mm2	Tightening Torque (TA) Nm
# PSV2010.1-60	60 x 77	104.0 <i>4.094</i>	89.0 <i>3.504</i>	55.0 <i>2.165</i>	81.0 <i>3.189</i>	2780	93	61	48	41
# PSV2010.1-65	65 x 84	111.0 <i>4.370</i>	89.0 <i>3.504</i>	55.0 <i>2.165</i>	81.0 <i>3.189</i>	3010	93	56	44	41
# PSV2010.1-70	70 x 90	119.0 <i>4.685</i>	106.0 <i>4.173</i>	65.0 <i>2.559</i>	96.0 <i>3.780</i>	5320	152	72	56	83
# PSV2010.1-75	75 x 95	126.0 <i>4.961</i>	106.0 <i>4.173</i>	65.0 <i>2.559</i>	96.0 <i>3.780</i>	5700	152	67	53	83
# PSV2010.1-80	80 x 100	131.0 <i>5.157</i>	106.0 <i>4.173</i>	65.0 <i>2.559</i>	96.0 <i>3.780</i>	8110	203	84	67	83
# PSV2010.1-85	85 x 106	137.0 <i>5.394</i>	106.0 <i>4.173</i>	65.0 <i>2.559</i>	96.0 <i>3.780</i>	8610	203	79	63	83
# PSV2010.1-90	90 x 112	144.0 <i>5.669</i>	106.0 <i>4.173</i>	65.0 <i>2.559</i>	96.0 <i>3.780</i>	9120	203	75	60	83

Indicates item not stocked at time of printing - Please enquire for lead time

E&OE Pricing and all details subject to change without notice - Copyright Miniature Bearings Australia Pty Ltd

MBA Size Listings are a guide to sizes only and must not be solely relied on for critical design information.



DISTRIBUTED BY

Ask us to put your name and address here

<http://www.minibearings.com.au/product>

Ph +61 7 3245 7977

Fax +61 7 3245 1017

Catalogue requests to catalogues@minibearings.com.au
