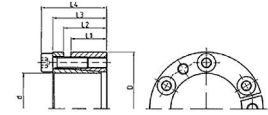




MBA

Assemblies - Locking - Unflanged



Suitable for locking sprockets, pulleys, eccentric shafts.

Locks components with a bore of (D) to shafts with a diameter of (d).

C60 Steel (060A62).

Outer ring expands whilst inner ring contracts.

During tightening of the screws, the hub must be able to perform axial movement.

Clearance h8 / H8. Surface roughness Rt max 10um shaft / hub.

Assemblies - Locking - Unflanged

Part Number	ID (d) x OD (D) mm	L1 mm	L2 mm	L3 mm	L4 mm	Transmittable Torque (T) Nm	Transmittable Axial Force kN	Contact Pressure Shaft pw N/mm2	Contact Pressure Hub pN N/mm2	Tightening Torque (TA) Nm
# PSV2006-18	18 x 47	17.0 <i>0.669</i>	22.0 <i>0.866</i>	28.0 <i>1.102</i>	34.0 <i>1.339</i>	310	34	314	120	14
# PSV2006-19	19 x 47	17.0 <i>0.669</i>	22.0 <i>0.866</i>	28.0 <i>1.102</i>	34.0 <i>1.339</i>	330	35	297	120	14
# PSV2006-20	20 x 47	17.0 <i>0.669</i>	22.0 <i>0.866</i>	28.0 <i>1.102</i>	34.0 <i>1.339</i>	350	35	283	12	14

Indicates item not stocked at time of printing - Please enquire for lead time

E&OE Pricing and all details subject to change without notice - Copyright Miniature Bearings Australia Pty Ltd

MBA Size Listings are a guide to sizes only and must not be solely relied on for critical design information.

Assemblies - Locking - Unflanged

Part Number	ID (d) x OD (D) mm	L1 mm	L2 mm	L3 mm	L4 mm	Transmittable Torque (T) Nm	Transmittable Axial Force kN	Contact Pressure Shaft pw N/mm2	Contact Pressure Hub pN N/mm2	Tightening Torque (TA) Nm
# PSV2006-22	22 x 47	17.0 <i>0.669</i>	22.0 <i>0.866</i>	28.0 <i>1.102</i>	34.0 <i>1.339</i>	380	35	257	120	14
# PSV2006-24	24 x 50	17.0 <i>0.669</i>	22.0 <i>0.866</i>	28.0 <i>1.102</i>	34.0 <i>1.339</i>	420	35	236	113	14
# PSV2006-25	25 x 50	17.0 <i>0.669</i>	22.0 <i>0.866</i>	28.0 <i>1.102</i>	34.0 <i>1.339</i>	520	42	271	136	14
# PSV2006-28	28 x 55	17.0 <i>0.669</i>	22.0 <i>0.866</i>	28.0 <i>1.102</i>	34.0 <i>1.339</i>	580	41	242	123	14
# PSV2006-30	30 x 55	17.0 <i>0.669</i>	22.0 <i>0.866</i>	28.0 <i>1.102</i>	34.0 <i>1.339</i>	620	41	226	123	14
# PSV2006-32	32 x 60	17.0 <i>0.669</i>	22.0 <i>0.866</i>	28.0 <i>1.102</i>	34.0 <i>1.339</i>	890	56	283	151	14
# PSV2006-35	35 x 60	17.0 <i>0.669</i>	22.0 <i>0.866</i>	28.0 <i>1.102</i>	34.0 <i>1.339</i>	970	55	258	151	14
# PSV2006-38	38 x 65	17.0 <i>0.669</i>	22.0 <i>0.866</i>	28.0 <i>1.102</i>	34.0 <i>1.339</i>	1060	56	238	139	14
# PSV2006-40	40 x 65	17.0 <i>0.669</i>	22.0 <i>0.866</i>	28.0 <i>1.102</i>	34.0 <i>1.339</i>	1110	56	226	139	14
# PSV2006-42	42 x 75	20.0 <i>0.787</i>	25.0 <i>0.984</i>	33.0 <i>1.299</i>	41.0 <i>1.614</i>	1960	93	307	172	35

Indicates item not stocked at time of printing - Please enquire for lead time

E&OE Pricing and all details subject to change without notice - Copyright Miniature Bearings Australia Pty Ltd

MBA Size Listings are a guide to sizes only and must not be solely relied on for critical design information.

Assemblies - Locking - Unflanged

Part Number	ID (d) x OD (D) mm	L1 mm	L2 mm	L3 mm	L4 mm	Transmittable Torque (T) Nm	Transmittable Axial Force kN	Contact Pressure Shaft pw N/mm2	Contact Pressure Hub pN N/mm2	Tightening Torque (TA) Nm
# PSV2006-45	45 x 75	20.0 <i>0.787</i>	25.0 <i>0.984</i>	33.0 <i>1.299</i>	41.0 <i>1.614</i>	2100	93	287	172	35
# PSV2006-48	48 x 80	20.0 <i>0.787</i>	25.0 <i>0.984</i>	33.0 <i>1.299</i>	41.0 <i>1.614</i>	2240	93	269	161	35
# PSV2006-50	50 x 80	20.0 <i>0.787</i>	25.0 <i>0.984</i>	33.0 <i>1.299</i>	41.0 <i>1.614</i>	2330	93	258	161	35

Indicates item not stocked at time of printing - Please enquire for lead time

E&OE Pricing and all details subject to change without notice - Copyright Miniature Bearings Australia Pty Ltd

MBA Size Listings are a guide to sizes only and must not be solely relied on for critical design information.



DISTRIBUTED BY

Ask us to put your name and address here

<http://www.minibearings.com.au/product>

Ph +61 7 3245 7977

Fax +61 7 3245 1017

Catalogue requests to catalogues@minibearings.com.au
