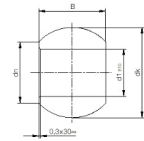




MBA

Balls - Bored - Plastic



Bored acetal balls as used in plastic rod ends.

Maintenance Free - Self Lubricating.

Corrosion Resistant Iglidur W300 material.

Suitable for rotating, oscillating and linear movement.

Lightweight.

This catalogue to be read in conjunction with information at <http://www.minibearings.com.au/ical/balls/>

<http://www.minibearings.com.au/categories/balls/all/pics/>

Balls - Bored - Plastic

Part Number	Outside Diameter (dk) mm	Inside Diameter (d1) mm	Width (B) mm	Shoulder Diameter (dn) mm	Chamfer mm
	<i>inches</i>	<i>inches</i>	<i>inches</i>	<i>inches</i>	<i>inches</i>
BLB-05.200x02.000-IW300	05.200 <i>0.205</i>	02.000 <i>0.079</i>	04.000 <i>0.157</i>	3.90 <i>0.154</i>	0.3X30
BLB-07.900x03.000-IW300	07.900 <i>0.311</i>	03.000 <i>0.118</i>	06.000 <i>0.236</i>	5.40 <i>0.213</i>	0.3X30
# BLB-08.250x04.000-IW300	08.250 <i>0.325</i>	04.000 <i>0.157</i>	05.000 <i>0.197</i>	6.25 <i>0.246</i>	0.3X30

Indicates item not stocked at time of printing - Please enquire for lead time

E&OE Pricing and all details subject to change without notice - Copyright Miniature Bearings Australia Pty Ltd

MBA Size Listings are a guide to sizes only and must not be solely relied on for critical design information.

Balls - Bored - Plastic

Part Number	Outside Diameter (dk) mm <i>inches</i>	Inside Diameter (d1) mm <i>inches</i>	Width (B) mm <i>inches</i>	Shoulder Diameter (dn) mm <i>inches</i>	Chamfer mm <i>inches</i>
BLB-10.200x05.000-IW300	10.200 <i>0.402</i>	05.000 <i>0.197</i>	06.000 <i>0.236</i>	8.00 <i>0.315</i>	0.3X30
# BLB-10.200x06.000-IW300	10.200 <i>0.402</i>	06.000 <i>0.236</i>	06.000 <i>0.236</i>	8.00 <i>0.315</i>	0.3X30
# BLB-11.100x05.000-IW300	11.100 <i>0.437</i>	05.000 <i>0.197</i>	08.000 <i>0.315</i>	7.70 <i>0.303</i>	0.3X30
# BLB-11.280x04.830-IW300	11.280 <i>0.444</i>	04.830 <i>0.190</i>	07.920 <i>0.312</i>	7.62 <i>0.300</i>	0.3X30
# BLB-12.700x06.000-IW300	12.700 <i>0.500</i>	06.000 <i>0.236</i>	09.000 <i>0.354</i>	8.90 <i>0.350</i>	0.3X30
# BLB-13.110x06.350-IW300	13.110 <i>0.516</i>	06.350 <i>0.250</i>	09.530 <i>0.375</i>	8.99 <i>0.354</i>	0.3X30
# BLB-13.200x08.000-IW300	13.200 <i>0.520</i>	08.000 <i>0.315</i>	08.000 <i>0.315</i>	10.00 <i>0.394</i>	0.3X30
BLB-15.800x08.000-IW300	15.800 <i>0.622</i>	08.000 <i>0.315</i>	12.000 <i>0.472</i>	10.30 <i>0.406</i>	0.3X30
# BLB-15.880x07.940-IW300	15.880 <i>0.625</i>	07.940 <i>0.313</i>	11.100 <i>0.437</i>	11.35 <i>0.447</i>	0.3X30
# BLB-16.000x10.000-IW300	16.000 <i>0.630</i>	10.000 <i>0.394</i>	09.000 <i>0.354</i>	13.00 <i>0.512</i>	0.3X30

Indicates item not stocked at time of printing - Please enquire for lead time

E&OE Pricing and all details subject to change without notice - Copyright Miniature Bearings Australia Pty Ltd

MBA Size Listings are a guide to sizes only and must not be solely relied on for critical design information.

Balls - Bored - Plastic

Part Number	Outside Diameter (dk) mm	Inside Diameter (d1) mm	Width (B) mm	Shoulder Diameter (dn) mm	Chamfer mm
	<i>inches</i>	<i>inches</i>	<i>inches</i>	<i>inches</i>	<i>inches</i>
# BLB-18.000x12.000-IW300	18.000 <i>0.709</i>	12.000 <i>0.472</i>	10.000 <i>0.394</i>	15.00 <i>0.591</i>	0.3X30
# BLB-18.240x09.530-IW300	18.240 <i>0.718</i>	09.530 <i>0.375</i>	12.700 <i>0.500</i>	12.80 <i>0.504</i>	0.3X30
BLB-19.000x10.000-IW300	19.000 <i>0.748</i>	10.000 <i>0.394</i>	14.000 <i>0.551</i>	12.90 <i>0.508</i>	0.3X30
BLB-21.030x11.110-IW300	21.030 <i>0.828</i>	11.110 <i>0.437</i>	14.270 <i>0.562</i>	15.27 <i>0.601</i>	0.3X30
# BLB-22.000x15.000-IW300	22.000 <i>0.866</i>	15.000 <i>0.591</i>	12.000 <i>0.472</i>	18.00 <i>0.709</i>	0.3X30
# BLB-22.220x12.000-IW300	22.220 <i>0.875</i>	12.000 <i>0.472</i>	16.000 <i>0.630</i>	15.40 <i>0.606</i>	0.3X30
# BLB-23.830x12.700-IW300	23.830 <i>0.938</i>	12.700 <i>0.500</i>	15.880 <i>0.625</i>	17.78 <i>0.700</i>	0.3X30
# BLB-25.100x17.000-IW300	25.100 <i>0.988</i>	17.000 <i>0.669</i>	14.000 <i>0.551</i>	20.00 <i>0.787</i>	0.3X30
# BLB-25.250x14.000-IW300	25.250 <i>0.994</i>	14.000 <i>0.551</i>	19.000 <i>0.748</i>	16.80 <i>0.661</i>	0.3X30
# BLB-28.300x16.000-IW300	28.300 <i>1.114</i>	16.000 <i>0.630</i>	21.000 <i>0.827</i>	19.30 <i>0.760</i>	0.3X30

Indicates item not stocked at time of printing - Please enquire for lead time

E&OE Pricing and all details subject to change without notice - Copyright Miniature Bearings Australia Pty Ltd

MBA Size Listings are a guide to sizes only and must not be solely relied on for critical design information.

Balls - Bored - Plastic

Part Number	Outside Diameter (dk) mm	Inside Diameter (d1) mm	Width (B) mm	Shoulder Diameter (dn) mm	Chamfer mm
	<i>inches</i>	<i>inches</i>	<i>inches</i>	<i>inches</i>	<i>inches</i>
# BLB-28.580x15.880-IW300	28.580 <i>1.125</i>	15.880 <i>0.625</i>	19.050 <i>0.750</i>	21.28 <i>0.838</i>	0.3X30
# BLB-28.900x20.000-IW300	28.900 <i>1.138</i>	20.000 <i>0.787</i>	16.000 <i>0.630</i>	24.00 <i>0.945</i>	0.3X30
# BLB-31.350x18.000-IW300	31.350 <i>1.234</i>	18.000 <i>0.709</i>	23.000 <i>0.906</i>	21.80 <i>0.858</i>	0.3X30
# BLB-33.320x19.050-IW300	33.320 <i>1.312</i>	19.050 <i>0.750</i>	22.230 <i>0.875</i>	24.84 <i>0.978</i>	0.3X30
# BLB-34.900x20.000-IW300	34.900 <i>1.374</i>	20.000 <i>0.787</i>	25.000 <i>0.984</i>	24.30 <i>0.957</i>	0.3X30
# BLB-35.500x25.000-IW300	35.500 <i>1.398</i>	25.000 <i>0.984</i>	20.000 <i>0.787</i>	29.00 <i>1.142</i>	0.3X30
# BLB-38.100x22.000-IW300	38.100 <i>1.500</i>	22.000 <i>0.866</i>	28.000 <i>1.102</i>	25.80 <i>1.016</i>	0.3X30
# BLB-40.900x30.000-IW300	40.900 <i>1.610</i>	30.000 <i>1.181</i>	22.000 <i>0.866</i>	34.00 <i>1.339</i>	0.3X30
# BLB-42.800x25.000-IW300	42.800 <i>1.685</i>	25.000 <i>0.984</i>	31.000 <i>1.220</i>	29.50 <i>1.161</i>	0.3X30
# BLB-44.450x25.400-IW300	44.450 <i>1.750</i>	25.400 <i>1.000</i>	34.930 <i>1.375</i>	32.23 <i>1.269</i>	0.3X30

Indicates item not stocked at time of printing - Please enquire for lead time

E&OE Pricing and all details subject to change without notice - Copyright Miniature Bearings Australia Pty Ltd

MBA Size Listings are a guide to sizes only and must not be solely relied on for critical design information.

Balls - Bored - Plastic

Part Number	Outside Diameter (dk) mm	Inside Diameter (d1) mm	Width (B) mm	Shoulder Diameter (dn) mm	Chamfer mm
	<i>inches</i>	<i>inches</i>	<i>inches</i>	<i>inches</i>	<i>inches</i>
# BLB-51.000x30.000-IW300	51.000 <i>2.008</i>	30.000 <i>1.181</i>	37.000 <i>1.457</i>	34.80 <i>1.370</i>	0.3X30

Indicates item not stocked at time of printing - Please enquire for lead time

E&OE Pricing and all details subject to change without notice - Copyright Miniature Bearings Australia Pty Ltd

MBA Size Listings are a guide to sizes only and must not be solely relied on for critical design information.



DISTRIBUTED BY

Ask us to put your name and address here

<http://www.minibearings.com.au/product>

Ph +61 7 3245 7977

Fax +61 7 3245 1017

Catalogue requests to catalogues@minibearings.com.au

