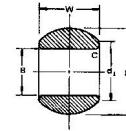




MBA

Balls - Bored - Steel



Bored steel balls as used in steel rod ends.

Hardness: 58-64 Rc.

Material: SUJ-2.

This catalogue to be read in conjunction with information at <http://www.minibearings.com.au/ical/balls/>
<http://www.minibearings.com.au/categories/balls/all/pics/>

Balls - Bored - Steel

Part Number	Diameter (D) mm <i>inches</i>	Bore (B) mm <i>inches</i>	Width (W) mm <i>inches</i>	Flat Diameter (d1) mm <i>inches</i>	Chamfer (C) mm <i>inches</i>
# BLB-07.938x03.000-SUJ2	7.938 <i>0.313</i>	3.000 <i>0.118</i>	6.000 <i>0.236</i>	5.100 <i>0.201</i>	0.3X45
# BLB-09.525x04.000-SUJ2	9.525 <i>0.375</i>	4.000 <i>0.157</i>	7.000 <i>0.276</i>	7.400 <i>0.291</i>	0.3X45
BLB-11.112x05.000-SUJ2	11.112 <i>0.437</i>	5.000 <i>0.197</i>	8.000 <i>0.315</i>	7.71 <i>0.304</i>	0.3X45
BLB-12.700x06.000-SUJ2	12.700 <i>0.500</i>	6.000 <i>0.236</i>	9.000 <i>0.354</i>	8.96 <i>0.353</i>	0.3X45

Indicates item not stocked at time of printing - Please enquire for lead time

E&OE Pricing and all details subject to change without notice - Copyright Miniature Bearings Australia Pty Ltd

MBA Size Listings are a guide to sizes only and must not be solely relied on for critical design information.

Balls - Bored - Steel

Part Number	Diameter (D) mm	Bore (B) mm	Width (W) mm	Flat Diameter (d1) mm	Chamfer (C) mm
	<i>inches</i>	<i>inches</i>	<i>inches</i>	<i>inches</i>	<i>inches</i>
# BLB-15.875x08.000-SUJ2	15.875 <i>0.625</i>	8.000 <i>0.315</i>	12.000 <i>0.472</i>	10.39 <i>0.409</i>	0.5X45
# BLB-19.050x10.000-SUJ2	19.050 <i>0.750</i>	10.000 <i>0.394</i>	14.000 <i>0.551</i>	12.92 <i>0.509</i>	0.5X45
# BLB-22.225x12.000-SUJ2	22.225 <i>0.875</i>	12.000 <i>0.472</i>	16.000 <i>0.630</i>	15.43 <i>0.607</i>	0.8X45
# BLB-25.400x14.000-SUJ2	25.400 <i>1.000</i>	14.000 <i>0.551</i>	19.000 <i>0.748</i>	16.86 <i>0.664</i>	0.8X45
# BLB-28.575x16.000-SUJ2	28.575 <i>1.125</i>	16.000 <i>0.630</i>	21.000 <i>0.827</i>	19.39 <i>0.763</i>	0.8X45
# BLB-31.750x18.000-SUJ2	31.750 <i>1.250</i>	18.000 <i>0.709</i>	23.000 <i>0.906</i>	21.89 <i>0.862</i>	0.8X45
# BLB-34.925x20.000-SUJ2	34.925 <i>1.375</i>	20.000 <i>0.787</i>	25.000 <i>0.984</i>	24.38 <i>0.960</i>	0.8X45
# BLB-38.100x22.000-SUJ2	38.100 <i>1.500</i>	22.000 <i>0.866</i>	28.000 <i>1.102</i>	25.84 <i>1.017</i>	0.8X45
# BLB-42.863x25.000-SUJ2	42.863 <i>1.688</i>	25.000 <i>0.984</i>	31.000 <i>1.220</i>	29.600 <i>1.165</i>	0.8X45
# BLB-50.800x30.000-SUJ2	50.800 <i>2.000</i>	30.000 <i>1.181</i>	37.000 <i>1.457</i>	34.810 <i>1.370</i>	0.8X45

Indicates item not stocked at time of printing - Please enquire for lead time

E&OE Pricing and all details subject to change without notice - Copyright Miniature Bearings Australia Pty Ltd

MBA Size Listings are a guide to sizes only and must not be solely relied on for critical design information.



DISTRIBUTED BY

Ask us to put your name and address here

<http://www.minibearings.com.au/product>

Ph +61 7 3245 7977

Fax +61 7 3245 1017

Catalogue requests to catalogues@minibearings.com.au
