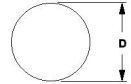




MBA

Balls - Hollow - Plastic



Fully enclosed hollow balls for use as covers in baths and tanks.

This catalogue to be read in conjunction with information at <http://www.minibearings.com.au/ical/balls/>
<http://www.minibearings.com.au/categories/balls/all/pics/>

Balls - Hollow - Plastic

Part Number	Diameter mm <i>inches</i>	Specific Gravity	Material	Temp. Range	Balls per Sq Mtr
# BLH-10.00-PP	10.00 <i>0.394</i>	0.38	Polypropylene	0 to 110 Deg. C	11570
# BLH-20.00-PP	20.00 <i>0.787</i>	0.24	Polypropylene	0 to 110 Deg. C	2910
# BLH-20.00-HDPE	20.00 <i>0.787</i>	0.24	HDPE	-60 to 71 Deg. C	2910
# BLH-38.00-PP	38.00 <i>1.496</i>	0.16	Polypropylene	0 to 110 Deg. C	800

Indicates item not stocked at time of printing - Please enquire for lead time
 E&OE Pricing and all details subject to change without notice - Copyright Miniature Bearings Australia Pty Ltd
 MBA Size Listings are a guide to sizes only and must not be solely relied on for critical design information.

Balls - Hollow - Plastic

Part Number	Diameter mm <i>inches</i>	Specific Gravity	Material	Temp. Range	Balls per Sq Mtr
# BLH-38.00-HDPE	38.00 <i>1.496</i>	0.16	HDPE	-60 to 71 Deg. C	800

Indicates item not stocked at time of printing - Please enquire for lead time

E&OE Pricing and all details subject to change without notice - Copyright Miniature Bearings Australia Pty Ltd

MBA Size Listings are a guide to sizes only and must not be solely relied on for critical design information.



DISTRIBUTED BY

Ask us to put your name and address here

<http://www.minibearings.com.au/product>

Ph +61 7 3245 7977

Fax +61 7 3245 1017

Catalogue requests to catalogues@minibearings.com.au

