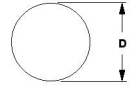




# MBA

## Balls - PTFE



No water absorption. Temperatures up to 288 Deg C.

Tolerances available on request.

Not affected by any known acids or alkalis.

No water absorption. Temperatures up to 288 Deg C.

Unpolished.

Specific Gravity: 2.3.

This catalogue to be read in conjunction with information at <http://www.minibearings.com.au/ical/balls/>

<http://www.minibearings.com.au/categories/balls/all/pics/>

### Balls - PTFE

Part Number	Diameter (D) mm <i>inches</i>	Material	Precision Grade	Hardness	Properties	Colour	Specific Gravity
BL-00.794-PTFE	0.794 <i>0.031</i>	Polytetrafluoroethylene	Commercial		No water absorption. Temperatures up to 288 Deg C.	White	2.3
BL-03.175-PTFE	3.175 <i>0.125</i>	Polytetrafluoroethylene	Commercial		No water absorption. Temperatures up to 288 Deg C.	White	2.3

# Indicates item not stocked at time of printing - Please enquire for lead time

E&OE Pricing and all details subject to change without notice - Copyright Miniature Bearings Australia Pty Ltd

MBA Size Listings are a guide to sizes only and must not be solely relied on for critical design information.

## Balls - PTFE

Part Number	Diameter (D) mm <i>inches</i>	Material	Precision Grade	Hardness	Properties	Colour	Specific Gravity
BL-03.969-PTFE	3.969 <i>0.156</i>	Polytetrafluoroethylene	Commercial		No water absorption. Temperatures up to 288 Deg C.	White	2.3
BL-04.762-PTFE	4.763 <i>0.188</i>	Polytetrafluoroethylene	Commercial		No water absorption. Temperatures up to 288 Deg C.	White	2.3
# BL-05.556-PTFE	5.556 <i>0.219</i>	Polytetrafluoroethylene	Commercial		No water absorption. Temperatures up to 288 Deg C.	White	2.3
BL-06.350-PTFE	6.350 <i>0.250</i>	Polytetrafluoroethylene	Commercial		No water absorption. Temperatures up to 288 Deg C.	White	2.3
# BL-07.144-PTFE	7.144 <i>0.281</i>	Polytetrafluoroethylene	Commercial		No water absorption. Temperatures up to 288 Deg C.	White	2.3
BL-07.938-PTFE	7.938 <i>0.313</i>	Polytetrafluoroethylene	Commercial		No water absorption. Temperatures up to 288 Deg C.	White	2.3
BL-09.525-PTFE	9.525 <i>0.375</i>	Polytetrafluoroethylene	Commercial		No water absorption. Temperatures up to 288 Deg C.	White	2.3

# Indicates item not stocked at time of printing - Please enquire for lead time

E&OE Pricing and all details subject to change without notice - Copyright Miniature Bearings Australia Pty Ltd

MBA Size Listings are a guide to sizes only and must not be solely relied on for critical design information.

## Balls - PTFE

Part Number	Diameter (D) mm <i>inches</i>	Material	Precision Grade	Hardness	Properties	Colour	Specific Gravity
BL-11.113-PTFE	11.113 <i>0.438</i>	Polytetrafluoroethylene	Commercial		No water absorption. Temperatures up to 288 Deg C.	White	2.3
BL-12.700-PTFE	12.700 <i>0.500</i>	Polytetrafluoroethylene	Commercial		No water absorption. Temperatures up to 288 Deg C.	White	2.3
# BL-14.288-PTFE	14.288 <i>0.563</i>	Polytetrafluoroethylene	Commercial		No water absorption. Temperatures up to 288 Deg C.	White	2.3
BL-15.875-PTFE	15.875 <i>0.625</i>	Polytetrafluoroethylene	Commercial		No water absorption. Temperatures up to 288 Deg C.	White	2.3
BL-19.050-PTFE	19.050 <i>0.750</i>	Polytetrafluoroethylene	Commercial		No water absorption. Temperatures up to 288 Deg C.	White	2.3
# BL-22.225-PTFE	22.225 <i>0.875</i>	Polytetrafluoroethylene	Commercial		No water absorption. Temperatures up to 288 Deg C.	White	2.3
# BL-25.400-PTFE	25.400 <i>1.000</i>	Polytetrafluoroethylene	Commercial		No water absorption. Temperatures up to 288 Deg C.	White	2.3

# Indicates item not stocked at time of printing - Please enquire for lead time

E&OE Pricing and all details subject to change without notice - Copyright Miniature Bearings Australia Pty Ltd

MBA Size Listings are a guide to sizes only and must not be solely relied on for critical design information.

## Balls - PTFE

Part Number	Diameter (D) mm <i>inches</i>	Material	Precision Grade	Hardness	Properties	Colour	Specific Gravity
# BL-30.163-PTFE	30.163 <i>1.188</i>	Polytetrafluoroethylene	Commercial		No water absorption. Temperatures up to 288 Deg C.	White	2.3
# BL-31.750-PTFE	31.750 <i>1.250</i>	Polytetrafluoroethylene	Commercial		No water absorption. Temperatures up to 288 Deg C.	White	2.3
# BL-38.100-PTFE	38.100 <i>1.500</i>	Polytetrafluoroethylene	Commercial		No water absorption. Temperatures up to 288 Deg C.	White	2.3
# BL-50.800-PTFE	50.800 <i>2.000</i>	Polytetrafluoroethylene	Commercial		No water absorption. Temperatures up to 288 Deg C.	White	2.3

# Indicates item not stocked at time of printing - Please enquire for lead time

E&OE Pricing and all details subject to change without notice - Copyright Miniature Bearings Australia Pty Ltd

MBA Size Listings are a guide to sizes only and must not be solely relied on for critical design information.



DISTRIBUTED BY

Ask us to put your name and address here

<http://www.minibearings.com.au/product>

Ph +61 7 3245 7977

Fax +61 7 3245 1017

Catalogue requests to [catalogues@minibearings.com.au](mailto:catalogues@minibearings.com.au)

