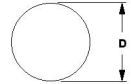




MBA

Balls - Stainless Steel - 316 Grade



A4 Grade. Low magnetic permeability. Resistant to severe corrosive conditions. Excellent welding and brazing qualities.

Tolerances available on request. Grade 100.

Hardness: Rockwell C: 25-39. Specific Gravity: 7.972.

Low magnetic permeability. Resistant to severe corrosive conditions. Excellent welding and brazing qualities.

Note! Increase in magnetic permeability may occur due to the grinding process and can be relieved by heating to over 1000 Deg C.

This catalogue to be read in conjunction with information at <http://www.minibearings.com.au/ical/balls/>

<http://www.minibearings.com.au/categories/balls/all/pics/>

Balls - Stainless Steel - 316 Grade

| Part Number | Diameter (D) mm <i>inches</i> | Material | Precision Grade | Hardness | Properties | Colour | Specific Gravity |
|--------------------|----------------------------------|---------------------|-----------------|-------------------|--|--------|------------------|
| BL-01.000-316-G100 | 1.000 <i>0.039</i> | 316 Grade Stainless | Grade 100 | Rockwell C: 25-39 | Resistant to severe corrosive conditions | Silver | 7.972 |
| BL-01.588-316-G100 | 1.588 <i>0.063</i> | 316 Grade Stainless | Grade 100 | Rockwell C: 25-39 | Resistant to severe corrosive conditions | Silver | 7.972 |

Indicates item not stocked at time of printing - Please enquire for lead time

E&OE Pricing and all details subject to change without notice - Copyright Miniature Bearings Australia Pty Ltd

MBA Size Listings are a guide to sizes only and must not be solely relied on for critical design information.

Balls - Stainless Steel - 316 Grade

| Part Number | Diameter (D) mm <i>inches</i> | Material | Precision Grade | Hardness | Properties | Colour | Specific Gravity |
|--------------------|----------------------------------|---------------------|-----------------|-------------------|--|--------|------------------|
| BL-02.000-316-G100 | 2.000 <i>0.079</i> | 316 Grade Stainless | Grade 100 | Rockwell C: 25-39 | Resistant to severe corrosive conditions | Silver | 7.972 |
| BL-02.381-316-G100 | 2.381 <i>0.094</i> | 316 Grade Stainless | Grade 100 | Rockwell C: 25-39 | Resistant to severe corrosive conditions | Silver | 7.972 |
| BL-03.000-316-G100 | 3.000 <i>0.118</i> | 316 Grade Stainless | Grade 100 | Rockwell C: 25-39 | Resistant to severe corrosive conditions | Silver | 7.972 |
| BL-03.175-316-G100 | 3.175 <i>0.125</i> | 316 Grade Stainless | Grade 100 | Rockwell C: 25-39 | Resistant to severe corrosive conditions | Silver | 7.972 |
| BL-03.969-316-G100 | 3.969 <i>0.156</i> | 316 Grade Stainless | Grade 100 | Rockwell C: 25-39 | Resistant to severe corrosive conditions | Silver | 7.972 |
| BL-04.000-316-G100 | 4.000 <i>0.157</i> | 316 Grade Stainless | Grade 100 | Rockwell C: 25-39 | Resistant to severe corrosive conditions | Silver | 7.972 |
| BL-04.762-316-G100 | 4.763 <i>0.188</i> | 316 Grade Stainless | Grade 100 | Rockwell C: 25-39 | Resistant to severe corrosive conditions | Silver | 7.972 |
| BL-05.000-316-G100 | 5.000 <i>0.197</i> | 316 Grade Stainless | Grade 100 | Rockwell C: 25-39 | Resistant to severe corrosive conditions | Silver | 7.972 |

Indicates item not stocked at time of printing - Please enquire for lead time

E&OE Pricing and all details subject to change without notice - Copyright Miniature Bearings Australia Pty Ltd

MBA Size Listings are a guide to sizes only and must not be solely relied on for critical design information.

Balls - Stainless Steel - 316 Grade

| Part Number | Diameter (D) mm <i>inches</i> | Material | Precision Grade | Hardness | Properties | Colour | Specific Gravity |
|----------------------|----------------------------------|---------------------|-----------------|-------------------|--|--------|------------------|
| BL-06.350-316-G100 | 6.350 <i>0.250</i> | 316 Grade Stainless | Grade 100 | Rockwell C: 25-39 | Resistant to severe corrosive conditions | Silver | 7.972 |
| BL-07.938-316-G100 | 7.938 <i>0.313</i> | 316 Grade Stainless | Grade 100 | Rockwell C: 25-39 | Resistant to severe corrosive conditions | Silver | 7.972 |
| BL-09.525-316-G100 | 9.525 <i>0.375</i> | 316 Grade Stainless | Grade 100 | Rockwell C: 25-39 | Resistant to severe corrosive conditions | Silver | 7.972 |
| # BL-11.113-316-G200 | 11.113 <i>0.438</i> | 316 Grade Stainless | 200 | Rockwell C: 25-39 | Resistant to severe corrosive conditions | Silver | 7.972 |
| BL-12.700-316-G100 | 12.700 <i>0.500</i> | 316 Grade Stainless | Grade 100 | Rockwell C: 25-39 | Resistant to severe corrosive conditions | Silver | 7.972 |
| BL-15.875-316-G100 | 15.875 <i>0.625</i> | 316 Grade Stainless | Grade 100 | Rockwell C: 25-39 | Resistant to severe corrosive conditions | Silver | 7.972 |
| # BL-19.050-316-G100 | 19.050 <i>0.750</i> | 316 Grade Stainless | Grade 100 | Rockwell C: 25-39 | Resistant to severe corrosive conditions | Silver | 7.972 |
| BL-25.400-316-G1000 | 25.400 <i>1.000</i> | 316 Grade Stainless | Grade 1000 | Rockwell C: 25-39 | Resistant to severe corrosive conditions | Silver | 7.972 |

Indicates item not stocked at time of printing - Please enquire for lead time

E&OE Pricing and all details subject to change without notice - Copyright Miniature Bearings Australia Pty Ltd

MBA Size Listings are a guide to sizes only and must not be solely relied on for critical design information.

Balls - Stainless Steel - 316 Grade

| Part Number | Diameter (D) mm | Material | Precision Grade | Hardness | Properties | Colour | Specific Gravity |
|----------------------|-----------------|---------------------|-----------------|-------------------|--|--------|------------------|
| | <i>inches</i> | | | | | | |
| # BL-31.750-316-G100 | 31.750 | 316 Grade Stainless | Grade 100 | Rockwell C: 25-39 | Resistant to severe corrosive conditions | Silver | 7.972 |
| | <i>1.250</i> | | | | | | |

Indicates item not stocked at time of printing - Please enquire for lead time

E&OE Pricing and all details subject to change without notice - Copyright Miniature Bearings Australia Pty Ltd

MBA Size Listings are a guide to sizes only and must not be solely relied on for critical design information.



DISTRIBUTED BY

Ask us to put your name and address here

<http://www.minibearings.com.au/product>

Ph +61 7 3245 7977

Fax +61 7 3245 1017

Catalogue requests to catalogues@minibearings.com.au

| | | | | | |
|--|--|--|--|--|--|
| | | | | | |
| | | | | | |
| | | | | | |