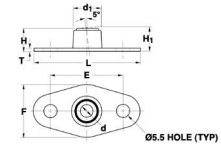




MBA

Bearings - Press - Sintered Bronze - Flange Mounted



Porous sintered bronze bearing.

-28 to 95 Deg C.

Retainer : Carbon Steel / Zinc Plated or Oxytote® Hardened to HRB 93.98.

Use any shaft material with 0.8 um or finer finish.

<http://www.minibearings.com.au//categories/shafting/all/pics/>

Bearings - Press - Sintered Bronze - Flange Mounted

| Part Number | Inner Diameter mm | Overall Length mm | Height along Centre Line mm | Overall Width | Panel Clearance Diameter | Distance between holes | Max. Radial Load N | Flange Thickness | Type | Max. Speed RPM |
|-------------------|-------------------|-------------------|-----------------------------|---------------|--------------------------|------------------------|--------------------|------------------|---------------------------|----------------|
| | <i>inches</i> | <i>inches</i> | <i>inches</i> | | | | | | | |
| # PBF-04.00-SB-SA | 4.010 - 4.030 | 45.000 | 10.200 | 22.200 | 13.800 | 31.000 | 200 | 1.200 | Self aligning (+/- 5 Deg) | 16160 |
| | | <i>1.772</i> | <i>0.402</i> | | | | | | | |
| # PBF-04.76-SB-SA | 4.783 - 4.803 | 45.720 | 10.160 | 22.350 | 13.495 | 30.734 | 438 | 1.270 | Self aligning (+/- 5 Deg) | 13570 |
| | | <i>1.800</i> | <i>0.400</i> | | | | | | | |
| # PBF-06.00-SB-SA | 6.020 - 6.040 | 45.000 | 10.200 | 22.200 | 10.300 | 31.000 | 400 | 1.200 | Self aligning (+/- 5 Deg) | 10770 |
| | | <i>1.772</i> | <i>0.402</i> | | | | | | | |

Indicates item not stocked at time of printing - Please enquire for lead time

E&OE Pricing and all details subject to change without notice - Copyright Miniature Bearings Australia Pty Ltd

MBA Size Listings are a guide to sizes only and must not be solely relied on for critical design information.

Bearings - Press - Sintered Bronze - Flange Mounted

| Part Number | Inner Diameter mm | Overall Length mm | Height along Centre Line mm | Overall Width | Panel Clearance Diameter | Distance between holes | Max. Radial Load N | Flange Thickness | Type | Max. Speed RPM |
|-------------------|-------------------|-------------------|-----------------------------|---------------|--------------------------|------------------------|--------------------|------------------|------------------------------|----------------|
| | <i>inches</i> | <i>inches</i> | <i>inches</i> | | | | | | | |
| PBF-06.35-SB-SA | 6.370 - 6.390 | 45.720 | 10.160 | 22.350 | 13.495 | 30.734 | 438 | 1.270 | Self aligning (+/- 5 Deg) | 10180 |
| | | <i>1.800</i> | <i>0.400</i> | | | | | | | |
| # PBF-07.94-SB-SA | 7.958 - 7.978 | 53.340 | 11.684 | 30.200 | 16.670 | 38.862 | 875 | 1.524 | Self aligning (+/- 5 Deg) | 8140 |
| | | <i>2.100</i> | <i>0.460</i> | | | | | | | |
| # PBF-08.00-SB-SA | 8.020 - 8.040 | 53.000 | 11.500 | 30.200 | 17.000 | 39.000 | 1000 | 1.600 | Self aligning (+/- 5 Deg) | 8080 |
| | | <i>2.087</i> | <i>0.453</i> | | | | | | | |
| # PBF-09.53-SB-SA | 9.545 - 9.565 | 53.340 | 11.684 | 30.200 | 16.670 | 38.862 | 1531 | 1.524 | Self aligning (+/- 5 Deg) | 6780 |
| | | <i>2.100</i> | <i>0.460</i> | | | | | | | |
| PBF-10.00-SB-SA | 10.020 - 10.040 | 53.000 | 11.500 | 30.200 | 17.000 | 39.000 | 1600 | 1.600 | Self aligning (+/- 5 Deg) | 6460 |
| | | <i>2.087</i> | <i>0.453</i> | | | | | | | |
| # PBF-12.00-SB-SA | 12.030 - 12.050 | 60.000 | 16.300 | 36.500 | 21.700 | 45.000 | 2400 | 1.600 | Self aligning (+/- 5 Deg) | 5390 |
| | | <i>2.362</i> | <i>0.642</i> | | | | | | | |
| PBF-12.70-SB-SA | 12.725 - 12.745 | 59.690 | 16.002 | 36.500 | 21.433 | 45.212 | 2188 | 1.524 | Self aligning (+/- 5 Deg) | 5090 |
| | | <i>2.350</i> | <i>0.630</i> | | | | | | | |
| # PBF-15.00-SB-SA | 15.030 - 15.050 | 60.000 | 19.400 | 39.700 | 28.100 | 45.000 | 2400 | 2.300 | Self aligning (+/- 5 Deg) | 4310 |
| | | <i>2.362</i> | <i>0.764</i> | | | | | | | |

Indicates item not stocked at time of printing - Please enquire for lead time

E&OE Pricing and all details subject to change without notice - Copyright Miniature Bearings Australia Pty Ltd

MBA Size Listings are a guide to sizes only and must not be solely relied on for critical design information.

Bearings - Press - Sintered Bronze - Flange Mounted

| Part Number | Inner Diameter mm | Overall Length mm | Height along Centre Line mm | Overall Width | Panel Clearance Diameter | Distance between holes | Max. Radial Load N | Flange Thickness | Type | Max. Speed RPM |
|-------------------|-------------------|-------------------|-----------------------------|---------------|--------------------------|------------------------|--------------------|------------------|---------------------------|----------------|
| | <i>inches</i> | <i>inches</i> | <i>inches</i> | | | | | | | |
| # PBF-15.88-SB-SA | 15.916 - 15.936 | 59.690 | 19.558 | 39.700 | 27.783 | 45.212 | 2188 | 2.286 | Self aligning (+/- 5 Deg) | 4070 |
| | | <i>2.350</i> | <i>0.770</i> | | | | | | | |
| # PBF-18.00-SB-SA | 18.030 - 18.050 | 82.500 | 22.500 | 39.700 | 32.900 | 63.500 | 2400 | 2.300 | Self aligning (+/- 5 Deg) | 3590 |
| | | <i>3.248</i> | <i>0.886</i> | | | | | | | |
| # PBF-19.05-SB-SA | 19.075 - 19.095 | 82.550 | 22.606 | 39.700 | 32.545 | 63.500 | 2188 | 2.286 | Self aligning (+/- 5 Deg) | 86106 |
| | | <i>3.250</i> | <i>0.890</i> | | | | | | | |

Indicates item not stocked at time of printing - Please enquire for lead time

E&OE Pricing and all details subject to change without notice - Copyright Miniature Bearings Australia Pty Ltd

MBA Size Listings are a guide to sizes only and must not be solely relied on for critical design information.



DISTRIBUTED BY

Ask us to put your name and address here

<http://www.minibearings.com.au/product>

Ph +61 7 3245 7977

Fax +61 7 3245 1017

Catalogue requests to catalogues@minibearings.com.au

