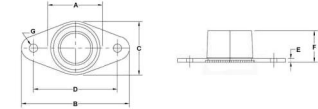




# MBA

## Bearings - Spyraflo - Flange Mount - Non Aligning



Low profile flange mounted needle roller and bronze bearings

See links at bottom of web page for more information

This catalogue to be read in conjunction with information at <http://www.minibearings.com.au/ogue/tech/spyraflo/Spyraflo Sizes and Types Guide.pdf>

<http://www.minibearings.com.au/ogue/tech/>

<http://www.minibearings.com.au/www.spyraflo.com/products/animation.php>

### Bearings - Spyraflo - Flange Mount - Non Aligning

Part Number	Nominal Shaft Size mm	Max. Radial Dynamic Load N	Material	Min to Max Shaft Dia. mm	Max Speed RPM	A mm	B mm	C mm	D mm	More Information
	<i>inches</i>			<i>inches</i>		<i>inches</i>	<i>inches</i>	<i>inches</i>	<i>inches</i>	
# BFM-4M-PN	4.000 <i>0.157</i>	Insert Load Here	Teflon Bronze							
BFM-6M-NN	6.000 <i>0.236</i>	2030	Needle Roller	5.992 to 6.000	35000	16.70 <i>0.657</i>	53.00 <i>2.087</i>	30.00 <i>1.181</i>	38.80 <i>1.528</i>	Refer Tech Data Sheet
# BFM-6M-PN	6.000 <i>0.236</i>	4500	Teflon Bronze	5.978 to 5.990	6360	13.00 <i>0.512</i>	45.00 <i>1.772</i>	22.20 <i>0.874</i>	31.00 <i>1.220</i>	Refer Tech Data Sheet

# Indicates item not stocked at time of printing - Please enquire for lead time

E&OE Pricing and all details subject to change without notice - Copyright Miniature Bearings Australia Pty Ltd

MBA Size Listings are a guide to sizes only and must not be solely relied on for critical design information.

## Bearings - Spyraflo - Flange Mount - Non Aligning

Part Number	Nominal Shaft Size mm	Max. Radial Dynamic Load N	Material	Min to Max Shaft Dia. mm	Max Speed RPM	A mm	B mm	C mm	D mm	More Information
	<i>inches</i>			<i>inches</i>		<i>inches</i>	<i>inches</i>	<i>inches</i>	<i>inches</i>	
# BFM-250-NN	6.350	2535	Needle Roller	6.337 to 6.350	44000	16.67	53.34	30.23	38.86	Refer Tech Data Sheet
	<i>0.250</i>					<i>0.656</i>	<i>2.100</i>	<i>1.190</i>	<i>1.530</i>	
BFM-250-PN	6.350	7562	Teflon Bronze	6.299 to 6.325	6020	13.49	45.72	22.35	30.73	Refer Tech Data Sheet
	<i>0.250</i>					<i>0.531</i>	<i>1.800</i>	<i>0.880</i>	<i>1.210</i>	
# BFM-312-NN	7.938	2891	Needle Roller	7.925 to 7.938	35500	16.67	53.34	30.23	38.86	Refer Tech Data Sheet
	<i>0.313</i>					<i>0.656</i>	<i>2.100</i>	<i>1.190</i>	<i>1.530</i>	
# BFM-312-PN	7.938	9430	Teflon Bronze	7.889 to 7.912	4820	13.49	45.72	22.35	30.73	Refer Tech Data Sheet
	<i>0.313</i>					<i>0.531</i>	<i>1.800</i>	<i>0.880</i>	<i>1.210</i>	
BFM-8M-NN	8.000	2750	Needle Roller	7.991 to 8.000	28000	16.70	53.00	30.30	38.80	Refer Tech Data Sheet
	<i>0.315</i>					<i>0.657</i>	<i>2.087</i>	<i>1.193</i>	<i>1.528</i>	
# BFM-8M-PN	8.000	8000	Teflon Bronze	7.972 to 7.987	4770	16.50	53.00	30.20	39.00	Refer Tech Data Sheet
	<i>0.315</i>					<i>0.650</i>	<i>2.087</i>	<i>1.189</i>	<i>1.535</i>	
BFM-375-NN	9.525	2891	Needle Roller	9.512 to 9.525	29500	21.43	45.21	31.75	30.99	Refer Tech Data Sheet
	<i>0.375</i>					<i>0.844</i>	<i>1.780</i>	<i>1.250</i>	<i>1.220</i>	
# BFM-375-PN	9.525	15124	Teflon Bronze	9.477 to 9.500	4010	16.67	53.09	30.23	38.86	Refer Tech Data Sheet
	<i>0.375</i>					<i>0.656</i>	<i>2.090</i>	<i>1.190</i>	<i>1.530</i>	

# Indicates item not stocked at time of printing - Please enquire for lead time

E&OE Pricing and all details subject to change without notice - Copyright Miniature Bearings Australia Pty Ltd

MBA Size Listings are a guide to sizes only and must not be solely relied on for critical design information.

## Bearings - Spyraflo - Flange Mount - Non Aligning

Part Number	Nominal Shaft Size mm <i>inches</i>	Max. Radial Dynamic Load N	Material	Min to Max Shaft Dia. mm <i>inches</i>	Max Speed RPM	A mm <i>inches</i>	B mm <i>inches</i>	C mm <i>inches</i>	D mm <i>inches</i>	More Information
BFM-10M-NN	10.000 <i>0.394</i>	4400	Needle Roller	9.991 to 10.000	23000	22.00 <i>0.866</i>	45.00 <i>1.772</i>	31.80 <i>1.252</i>	31.00 <i>1.220</i>	Refer Tech Data Sheet
# BFM-10M-PN	10.000 <i>0.394</i>	12500	Teflon Bronze	9.972 to 9.987	3820	16.50 <i>0.650</i>	53.00 <i>2.087</i>	30.20 <i>1.189</i>	39.00 <i>1.535</i>	Refer Tech Data Sheet
# BFM-12M-NN	12.000 <i>0.472</i>	4950	Needle Roller	11.989 to 12.000	20000	22.00 <i>0.866</i>	45.00 <i>1.772</i>	31.80 <i>1.252</i>	31.00 <i>1.220</i>	Refer Tech Data Sheet
# BFM-12M-PN	12.000 <i>0.472</i>	15170	Teflon Bronze	11.966 to 11.984	3180	22.00 <i>0.866</i>	60.00 <i>2.362</i>	36.50 <i>1.437</i>	45.00 <i>1.772</i>	Refer Tech Data Sheet
# BFM-500-NN	12.700 <i>0.500</i>	4626	Needle Roller	12.687 to 12.700	22000	23.02 <i>0.906</i>	53.34 <i>2.100</i>	32.00 <i>1.260</i>	38.86 <i>1.530</i>	Refer Tech Data Sheet
# BFM-500-PN	12.700 <i>0.500</i>	20150	Teflon Bronze	12.649 to 12.675	3010	21.43 <i>0.844</i>	53.09 <i>2.090</i>	32.00 <i>1.260</i>	38.86 <i>1.530</i>	Refer Tech Data Sheet
# BFM-562-NN	14.275 <i>0.562</i>	Insert Load Here	Needle Roller		0.00	0.00 <i>0.000</i>	0.00 <i>0.000</i>	0.00 <i>0.000</i>	0.00 <i>0.000</i>	
# BFM-15M-NN	15.000 <i>0.591</i>	7900	Needle Roller	14.989 to 15.000	16000	28.00 <i>1.102</i>	59.40 <i>2.339</i>	39.60 <i>1.559</i>	45.20 <i>1.780</i>	Refer Tech Data Sheet

# Indicates item not stocked at time of printing - Please enquire for lead time

E&OE Pricing and all details subject to change without notice - Copyright Miniature Bearings Australia Pty Ltd

MBA Size Listings are a guide to sizes only and must not be solely relied on for critical design information.

## Bearings - Spyraflo - Flange Mount - Non Aligning

Part Number	Nominal Shaft Size mm	Max. Radial Dynamic Load N	Material	Min to Max Shaft Dia. mm	Max Speed RPM	A mm	B mm	C mm	D mm	More Information
	<i>inches</i>			<i>inches</i>		<i>inches</i>	<i>inches</i>	<i>inches</i>	<i>inches</i>	
# BFM-625-NN	15.875	8140	Needle Roller	15.862 to 15.875	17600	27.78	59.44	39.62	45.21	Refer Tech Data Sheet
	<i>0.625</i>					<i>1.094</i>	<i>2.340</i>	<i>1.560</i>	<i>1.780</i>	
# BFM-625-PN	15.875	25221	Teflon Bronze	15.824 to 15.850	2410	23.02	53.09	32.00	38.86	Refer Tech Data Sheet
	<i>0.625</i>					<i>0.906</i>	<i>2.090</i>	<i>1.260</i>	<i>1.530</i>	
# BFM-16M-PN	16.000	20000	Teflon Bronze	15.966 to 15.984	2390	23.00	53.00	32.00	39.00	Refer Tech Data Sheet
	<i>0.630</i>					<i>0.906</i>	<i>2.087</i>	<i>1.260</i>	<i>1.535</i>	
# BFM-187-PN	18.000	Insert Load Here	Teflon Bronze							
	<i>0.709</i>									
# BFM-18M-PN	18.000	33750	Teflon Bronze	17.966 to 17.984	2120	28.00	60.00	39.70	45.00	Refer Tech Data Sheet
	<i>0.709</i>					<i>1.102</i>	<i>2.362</i>	<i>1.563</i>	<i>1.772</i>	
# BFM-750-NN	19.050	9831	Needle Roller	19.037 to 19.050	14700	32.54	59.44	39.62	45.21	Refer Tech Data Sheet
	<i>0.750</i>					<i>1.281</i>	<i>2.340</i>	<i>1.560</i>	<i>1.780</i>	
# BFM-750-PN	19.050	30248	Teflon Bronze	19.000 to 19.027	2010	27.78	59.69	39.62	45.21	Refer Tech Data Sheet
	<i>0.750</i>					<i>1.094</i>	<i>2.350</i>	<i>1.560</i>	<i>1.780</i>	

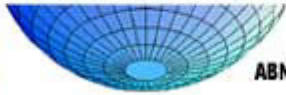
# Indicates item not stocked at time of printing - Please enquire for lead time

E&OE Pricing and all details subject to change without notice - Copyright Miniature Bearings Australia Pty Ltd

MBA Size Listings are a guide to sizes only and must not be solely relied on for critical design information.

# MBA

# MINIATURE BEARINGS AUSTRALIA PTY LTD



ABN 94 069 113 800



DISTRIBUTED BY

Ask us to put your name and address here

<http://www.minibearings.com.au/product>

Ph +61 7 3245 7977

Fax +61 7 3245 1017

Catalogue requests to [catalogues@minibearings.com.au](mailto:catalogues@minibearings.com.au)

**SDPSI**  
Stock Drive Products / Spring Instrument

**JK**

ANOTHER QUALITY PRODUCT BY  
**MOLYTEC**  
AUSTRALIA

**Origin**  
BEARING

**WIB**

**THOMSON**

**EZO**



**myonic**  
solutions in microspace

**rino**



**inox**  
Quality Products

**GRW**

**DualVee<sup>x</sup>**  
Bishop-Wisecarver Corp.

**ondrives**  
Precision Manufacturing

**RMB**

**SOLARBOTICS<sup>INTL</sup>**

**KSK**  
BALL BEARING