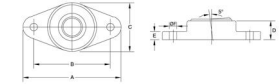




# MBA

## Bearings - Spyraflo - Flanged Housing - Self Aligning



Robust light weight aluminium housing with self aligning needle roller or bronze bearings.

See links at bottom of web page for more information

+/- 5% Static Alignment

Sintered aluminium housing

Corrosion Resistant

Light weight

This catalogue to be read in conjunction with information at <http://www.minibearings.com.au/ogue/tech/spyraflo/Spyraflo Sizes and Types Guide.pdf>

<http://www.minibearings.com.au/ogue/tech/>

<http://www.minibearings.com.au/www.spyraflo.com/products/animation.php>

### Bearings - Spyraflo - Flanged Housing - Self Aligning

Part Number	Nominal Shaft Size mm	Max. Radial Dynamic Load N	Material	Min to Max Shaft Dia. mm	Max Speed RPM	A mm	B mm	C mm	D mm	More Information
	<i>inches</i>			<i>inches</i>		<i>inches</i>	<i>inches</i>	<i>inches</i>	<i>inches</i>	
# HF1-6M-B	6.000	790	Bronze SAE 840	6.020 to 6.040	16110	41.50	32.00	19.00	9.50	Refer Tech Data Sheet
	<i>0.236</i>					<i>1.634</i>	<i>1.260</i>	<i>0.748</i>	<i>0.374</i>	
HF2-6M-N	6.000	2180	Needle Roller	5.992 to 6.000	35000	57.00	44.50	28.50	11.00	Refer Tech Data Sheet
	<i>0.236</i>					<i>2.244</i>	<i>1.752</i>	<i>1.122</i>	<i>0.433</i>	

# Indicates item not stocked at time of printing - Please enquire for lead time

E&OE Pricing and all details subject to change without notice - Copyright Miniature Bearings Australia Pty Ltd

MBA Size Listings are a guide to sizes only and must not be solely relied on for critical design information.

## Bearings - Spyraflo - Flanged Housing - Self Aligning

Part Number	Nominal Shaft Size mm	Max. Radial Dynamic Load N	Material	Min to Max Shaft Dia. mm	Max Speed RPM	A mm	B mm	C mm	D mm	More Information
	<i>inches</i>			<i>inches</i>		<i>inches</i>	<i>inches</i>	<i>inches</i>	<i>inches</i>	
# HF2-6M-HT	6.000	2200	Teflon Bronze - High Temperature	5.978 to 5.990	3820	57.00	44.50	28.50	11.00	Refer Tech Data Sheet
	<i>0.236</i>					<i>2.244</i>	<i>1.752</i>	<i>1.122</i>	<i>0.433</i>	
# HF2-6M-P	6.000	2200	Teflon Bronze	5.978 to 5.990	3820	57.00	44.50	28.50	11.00	Refer Tech Data Sheet
	<i>0.236</i>					<i>2.244</i>	<i>1.752</i>	<i>1.122</i>	<i>0.433</i>	
# HF2-6M-LT	6.000	2200	Teflon Bronze - Low Temperature	5.978 to 5.990	3820	57.00	44.50	28.50	11.00	Refer Tech Data Sheet
	<i>0.236</i>					<i>2.244</i>	<i>1.752</i>	<i>1.122</i>	<i>0.433</i>	
HF1-250-B	6.350	845	Bronze SAE 840	6.370 to 6.390	15270	41.40	31.75	19.05	9.65	Refer Tech Data Sheet
	<i>0.250</i>					<i>1.630</i>	<i>1.250</i>	<i>0.750</i>	<i>0.380</i>	
# HF2-250-LT	6.350	2180	Teflon Bronze - Low Temperature	6.328 to 6.340	6020	57.15	44.45	28.70	11.18	Refer Tech Data Sheet
	<i>0.250</i>					<i>2.250</i>	<i>1.750</i>	<i>1.130</i>	<i>0.440</i>	
# HF2-250-P	6.350	2180	Teflon Bronze	6.328 to 6.340	6020	57.15	44.45	28.70	11.18	Refer Tech Data Sheet
	<i>0.250</i>					<i>2.250</i>	<i>1.750</i>	<i>1.130</i>	<i>0.440</i>	
HF2-250-N	6.350	2180	Needle Roller	6.342 to 6.350	4400	57.15	44.45	28.70	11.18	Refer Tech Data Sheet
	<i>0.250</i>					<i>2.250</i>	<i>1.750</i>	<i>1.130</i>	<i>0.440</i>	

# Indicates item not stocked at time of printing - Please enquire for lead time

E&OE Pricing and all details subject to change without notice - Copyright Miniature Bearings Australia Pty Ltd

MBA Size Listings are a guide to sizes only and must not be solely relied on for critical design information.

## Bearings - Spyraflo - Flanged Housing - Self Aligning

Part Number	Nominal Shaft Size mm	Max. Radial Dynamic Load N	Material	Min to Max Shaft Dia. mm	Max Speed RPM	A mm	B mm	C mm	D mm	More Information
	<i>inches</i>			<i>inches</i>		<i>inches</i>	<i>inches</i>	<i>inches</i>	<i>inches</i>	
# HF2-250-HT	6.350	2180	Teflon Bronze - High Temperature	6.328 to 6.340	6020	57.15	44.45	28.70	11.18	Refer Tech Data Sheet
	<i>0.250</i>					<i>2.250</i>	<i>1.750</i>	<i>1.130</i>	<i>0.440</i>	
HF2-312-B	7.938	1201	Bronze SAE 840	7.958 to 7.978	12240	57.15	44.45	28.70	11.18	Refer Tech Data Sheet
	<i>0.313</i>					<i>2.250</i>	<i>1.750</i>	<i>1.130</i>	<i>0.440</i>	
HF2-312-N	7.938	1512	Needle Roller	7.929 to 7.938	35500	57.15	44.45	28.70	16.00	Refer Tech Data Sheet
	<i>0.313</i>					<i>2.250</i>	<i>1.750</i>	<i>1.130</i>	<i>0.630</i>	
# HF2-312-LT	7.938	1512	Teflon Bronze - Low Temperature	7.916 to 7.928	4820	57.15	44.45	28.70	11.18	Refer Tech Data Sheet
	<i>0.313</i>					<i>2.250</i>	<i>1.750</i>	<i>1.130</i>	<i>0.440</i>	
# HF2-312-P	7.938	1512	Teflon Bronze	7.910 to 7.925	4820	57.15	44.45	28.70	11.18	Refer Tech Data Sheet
	<i>0.313</i>					<i>2.250</i>	<i>1.750</i>	<i>1.130</i>	<i>0.440</i>	
# HF2-312-HT	7.938	1512	Teflon Bronze - High Temperature	7.916 to 7.928	4820	57.15	44.45	28.70	11.18	Refer Tech Data Sheet
	<i>0.313</i>					<i>2.250</i>	<i>1.750</i>	<i>1.130</i>	<i>0.440</i>	
# HF2-8M-B	8.000	1190	Bronze SAE 840	8.020 to 8.040	12120	57.00	44.50	28.50	11.00	Refer Tech Data Sheet
	<i>0.315</i>					<i>2.244</i>	<i>1.752</i>	<i>1.122</i>	<i>0.433</i>	
HF2-8M-N	8.000	1510	Needle Roller	7.991 to 8.000	28000	57.00	44.50	28.50	15.90	Refer Tech Data Sheet
	<i>0.315</i>					<i>2.244</i>	<i>1.752</i>	<i>1.122</i>	<i>0.626</i>	

# Indicates item not stocked at time of printing - Please enquire for lead time

E&OE Pricing and all details subject to change without notice - Copyright Miniature Bearings Australia Pty Ltd

MBA Size Listings are a guide to sizes only and must not be solely relied on for critical design information.

## Bearings - Spyraflo - Flanged Housing - Self Aligning

Part Number	Nominal Shaft Size mm	Max. Radial Dynamic Load N	Material	Min to Max Shaft Dia. mm	Max Speed RPM	A mm	B mm	C mm	D mm	More Information
	<i>inches</i>			<i>inches</i>		<i>inches</i>	<i>inches</i>	<i>inches</i>	<i>inches</i>	
# HF2-8M-LT	8.000	2200	Teflon Bronze - Low Temperature	7.978 to 7.990	2860	57.00	44.50	28.50	11.00	Refer Tech Data Sheet
	<i>0.315</i>					<i>2.244</i>	<i>1.752</i>	<i>1.122</i>	<i>0.433</i>	
# HF2-8M-P	8.000	2200	Teflon Bronze	7.972 to 7.987	2860	57.00	44.50	28.50	11.00	Refer Tech Data Sheet
	<i>0.315</i>					<i>2.244</i>	<i>1.752</i>	<i>1.122</i>	<i>0.433</i>	
# HF2-8M-HT	8.000	2200	Teflon Bronze - High Temperature	7.978 to 7.990	2860	57.00	44.50	28.50	11.00	Refer Tech Data Sheet
	<i>0.315</i>					<i>2.244</i>	<i>1.752</i>	<i>1.122</i>	<i>0.433</i>	
HF2-375-B	9.525	1423	Bronze SAE 840	9.545 to 9.565	10180	57.15	44.45	28.70	11.18	Refer Tech Data Sheet
	<i>0.375</i>					<i>2.250</i>	<i>1.750</i>	<i>1.130</i>	<i>0.440</i>	
HF2-375-N	9.525	1512	Needle Roller	9.516 to 9.525	29500	57.15	44.45	28.70	16.00	Refer Tech Data Sheet
	<i>0.375</i>					<i>2.250</i>	<i>1.750</i>	<i>1.130</i>	<i>0.630</i>	
# HF2-375-P	9.525	1512	Teflon Bronze	9.497 to 9.512	4010	57.15	44.45	28.70	16.00	Refer Tech Data Sheet
	<i>0.375</i>					<i>2.250</i>	<i>1.750</i>	<i>1.130</i>	<i>0.630</i>	
# HF2-375-HT	9.525	1512	Teflon Bronze - High Temperature	9.502 to 9.512	4010	57.15	44.45	28.70	16.00	Refer Tech Data Sheet
	<i>0.375</i>					<i>2.250</i>	<i>1.750</i>	<i>1.130</i>	<i>0.630</i>	

# Indicates item not stocked at time of printing - Please enquire for lead time

E&OE Pricing and all details subject to change without notice - Copyright Miniature Bearings Australia Pty Ltd

MBA Size Listings are a guide to sizes only and must not be solely relied on for critical design information.

## Bearings - Spyraflo - Flanged Housing - Self Aligning

Part Number	Nominal Shaft Size mm	Max. Radial Dynamic Load N	Material	Min to Max Shaft Dia. mm	Max Speed RPM	A mm	B mm	C mm	D mm	More Information
	<i>inches</i>			<i>inches</i>		<i>inches</i>	<i>inches</i>	<i>inches</i>	<i>inches</i>	
# HF2-375-LT	9.525	1512	Teflon Bronze - Low Temperature	9.502 to 9.512	4010	57.15	44.45	28.70	16.00	Refer Tech Data Sheet
	<i>0.375</i>					<i>2.250</i>	<i>1.750</i>	<i>1.130</i>	<i>0.630</i>	
# HF2-10M-B	10.000	1490	Bronze SAE 840	10.020 to 10.040	9700	57.00	44.50	28.50	11.00	Refer Tech Data Sheet
	<i>0.394</i>					<i>2.244</i>	<i>1.752</i>	<i>1.122</i>	<i>0.433</i>	
HF2-10M-N	10.000	1510	Needle Roller	9.991 to 10.000	23000	57.00	44.50	28.50	15.90	Refer Tech Data Sheet
	<i>0.394</i>					<i>2.244</i>	<i>1.752</i>	<i>1.122</i>	<i>0.626</i>	
# HF2-10M-LT	10.000	2200	Teflon Bronze - Low Temperature	9.977 to 9.987	2290	57.00	44.50	28.50	15.90	Refer Tech Data Sheet
	<i>0.394</i>					<i>2.244</i>	<i>1.752</i>	<i>1.122</i>	<i>0.626</i>	
# HF2-10M-P	10.000	2200	Teflon Bronze	9.977 to 9.987	2290	57.00	44.50	28.50	15.90	Refer Tech Data Sheet
	<i>0.394</i>					<i>2.244</i>	<i>1.752</i>	<i>1.122</i>	<i>0.626</i>	
# HF2-10M-HT	10.000	2200	Teflon Bronze - High Temperature	9.977 to 9.987	2290	57.00	44.50	28.50	15.90	Refer Tech Data Sheet
	<i>0.394</i>					<i>2.244</i>	<i>1.752</i>	<i>1.122</i>	<i>0.626</i>	
HF3-12M-B	12.000	1480	Bronze SAE 840	12.030 to 12.050	8060	82.50	63.50	41.50	20.00	Refer Tech Data Sheet
	<i>0.472</i>					<i>3.248</i>	<i>2.500</i>	<i>1.634</i>	<i>0.787</i>	
HF2-12M-B	12.000	1520	Bronze SAE 840	12.030 to 12.050	8060	57.00	44.50	28.50	15.90	Refer Tech Data Sheet
	<i>0.472</i>					<i>2.244</i>	<i>1.752</i>	<i>1.122</i>	<i>0.626</i>	

# Indicates item not stocked at time of printing - Please enquire for lead time

E&OE Pricing and all details subject to change without notice - Copyright Miniature Bearings Australia Pty Ltd

MBA Size Listings are a guide to sizes only and must not be solely relied on for critical design information.

## Bearings - Spyraflo - Flanged Housing - Self Aligning

Part Number	Nominal Shaft Size mm	Max. Radial Dynamic Load N	Material	Min to Max Shaft Dia. mm	Max Speed RPM	A mm	B mm	C mm	D mm	More Information
	<i>inches</i>			<i>inches</i>		<i>inches</i>	<i>inches</i>	<i>inches</i>	<i>inches</i>	
# HF2-12M-HT	12.000	1550	Teflon Bronze - High Temperature	11.966 to 11.984	1910	57.00	44.50	28.50	15.90	Refer Tech Data Sheet
	<i>0.472</i>					<i>2.244</i>	<i>1.752</i>	<i>1.122</i>	<i>0.626</i>	
# HF2-12M-P	12.000	1550	Teflon Bronze	11.972 to 11.987	1910	57.00	44.50	28.50	15.90	Refer Tech Data Sheet
	<i>0.472</i>					<i>2.244</i>	<i>1.752</i>	<i>1.122</i>	<i>0.626</i>	
# HF2-12M-LT	12.000	1550	Teflon Bronze - Low Temperature	11.966 to 11.984	1910	57.00	44.50	28.50	15.90	Refer Tech Data Sheet
	<i>0.472</i>					<i>2.244</i>	<i>1.752</i>	<i>1.122</i>	<i>0.626</i>	
HF3-12M-N	12.000	3800	Needle Roller	11.989 to 12.000	20000	82.50	63.50	41.50	20.00	Refer Tech Data Sheet
	<i>0.472</i>					<i>3.248</i>	<i>2.500</i>	<i>1.634</i>	<i>0.787</i>	
HF2-500-B	12.700	1512	Bronze SAE 840	12.730 to 12.750	7640	57.15	44.45	28.70	16.00	Refer Tech Data Sheet
	<i>0.500</i>					<i>2.250</i>	<i>1.750</i>	<i>1.130</i>	<i>0.630</i>	
# HF4-500-B	12.700	3114	Bronze SAE 840	12.730 to 12.750	7640	101.60	79.50	47.75	23.11	Refer Tech Data Sheet
	<i>0.500</i>					<i>4.000</i>	<i>3.130</i>	<i>1.880</i>	<i>0.910</i>	
HF3-500-N	12.700	3781	Needle Roller	12.689 to 12.700	22000	82.55	63.50	41.40	19.81	Refer Tech Data Sheet
	<i>0.500</i>					<i>3.250</i>	<i>2.500</i>	<i>1.630</i>	<i>0.780</i>	
# HF3-500-P	12.700	4537	Teflon Bronze	12.672 to 12.687	3010	82.55	63.50	41.40	19.81	Refer Tech Data Sheet
	<i>0.500</i>					<i>3.250</i>	<i>2.500</i>	<i>1.630</i>	<i>0.780</i>	

# Indicates item not stocked at time of printing - Please enquire for lead time

E&OE Pricing and all details subject to change without notice - Copyright Miniature Bearings Australia Pty Ltd

MBA Size Listings are a guide to sizes only and must not be solely relied on for critical design information.

## Bearings - Spyraflo - Flanged Housing - Self Aligning

Part Number	Nominal Shaft Size mm	Max. Radial Dynamic Load N	Material	Min to Max Shaft Dia. mm	Max Speed RPM	A mm	B mm	C mm	D mm	More Information
	<i>inches</i>			<i>inches</i>		<i>inches</i>	<i>inches</i>	<i>inches</i>	<i>inches</i>	
# HF3-500-HT	12.700	4537	Teflon Bronze - High Temperature	12.666 to 12.684	3010	82.55	63.50	41.40	19.81	Refer Tech Data Sheet
	<i>0.500</i>					<i>3.250</i>	<i>2.500</i>	<i>1.630</i>	<i>0.780</i>	
# HF3-500-LT	12.700	4537	Teflon Bronze - Low Temperature	12.666 to 12.684	3010	82.55	63.50	41.40	19.81	Refer Tech Data Sheet
	<i>0.500</i>					<i>3.250</i>	<i>2.500</i>	<i>1.630</i>	<i>0.780</i>	
# HF3-15M-B	15.000	2530	Bronze SAE 840	15.030 to 15.050	6460	82.50	63.50	41.50	20.00	Refer Tech Data Sheet
	<i>0.591</i>					<i>3.248</i>	<i>2.500</i>	<i>1.634</i>	<i>0.787</i>	
HF3-15M-N	15.000	3110	Needle Roller	14.989 to 15.000	16000	82.50	63.50	41.50	22.00	Refer Tech Data Sheet
	<i>0.591</i>					<i>3.248</i>	<i>2.500</i>	<i>1.634</i>	<i>0.866</i>	
# HF3-625-N	15.875	3114	Needle Roller	15.864 to 15.875	17600	82.55	63.50	41.40	22.35	Refer Tech Data Sheet
	<i>0.625</i>					<i>3.250</i>	<i>2.500</i>	<i>1.630</i>	<i>0.880</i>	
# HF3-625-LT	15.875	3114	Teflon Bronze - Low Temperature	15.841 to 15.859	2410	82.55	63.50	41.40	22.35	Refer Tech Data Sheet
	<i>0.625</i>					<i>3.250</i>	<i>2.500</i>	<i>1.630</i>	<i>0.880</i>	
HF3-625-B	15.875	3114	Bronze SAE 840	15.905 to 15.925	6110	82.55	63.50	41.40	19.81	Refer Tech Data Sheet
	<i>0.625</i>					<i>3.250</i>	<i>2.500</i>	<i>1.630</i>	<i>0.780</i>	
# HF3-625-P	15.875	3114	Teflon Bronze	15.824 to 15.849	2410	82.55	63.50	41.40	22.35	Refer Tech Data Sheet
	<i>0.625</i>					<i>3.250</i>	<i>2.500</i>	<i>1.630</i>	<i>0.880</i>	

# Indicates item not stocked at time of printing - Please enquire for lead time

E&OE Pricing and all details subject to change without notice - Copyright Miniature Bearings Australia Pty Ltd

MBA Size Listings are a guide to sizes only and must not be solely relied on for critical design information.

## Bearings - Spyraflo - Flanged Housing - Self Aligning

Part Number	Nominal Shaft Size mm	Max. Radial Dynamic Load N	Material	Min to Max Shaft Dia. mm	Max Speed RPM	A mm	B mm	C mm	D mm	More Information
	<i>inches</i>			<i>inches</i>		<i>inches</i>	<i>inches</i>	<i>inches</i>	<i>inches</i>	
# HF3-625-HT	15.875	3114	Teflon Bronze - High Temperature	15.841 to 15.859	2410	82.55	63.50	41.40	22.35	Refer Tech Data Sheet
	<i>0.625</i>					<i>3.250</i>	<i>2.500</i>	<i>1.630</i>	<i>0.880</i>	
# HF4-625-B	15.875	3559	Bronze SAE 840	15.905 to 15.925	6110	101.60	79.50	47.75	23.11	Refer Tech Data Sheet
	<i>0.625</i>					<i>4.000</i>	<i>3.130</i>	<i>1.880</i>	<i>0.910</i>	
# HF3-16M-P	16.000	3110	Teflon Bronze	15.966 to 15.984	1430	82.50	63.50	41.50	20.00	Refer Tech Data Sheet
	<i>0.630</i>					<i>3.248</i>	<i>2.500</i>	<i>1.634</i>	<i>0.787</i>	
# HF3-16M-HT	16.000	3110	Teflon Bronze - High Temperature	15.966 to 15.984	1430	82.50	63.50	41.50	20.00	Refer Tech Data Sheet
	<i>0.630</i>					<i>3.248</i>	<i>2.500</i>	<i>1.634</i>	<i>0.787</i>	
# HF3-16M-N	16.000	3110	Needle Roller	15.989 to 16.000	16000	82.50	63.50	41.50	22.00	Refer Tech Data Sheet
	<i>0.630</i>					<i>3.248</i>	<i>2.500</i>	<i>1.634</i>	<i>0.866</i>	
# HF3-16M-LT	16.000	3110	Teflon Bronze - Low Temperature	15.966 to 15.984	1430	82.50	63.50	41.50	20.00	Refer Tech Data Sheet
	<i>0.630</i>					<i>3.248</i>	<i>2.500</i>	<i>1.634</i>	<i>0.787</i>	
# HF3-18M-HT	18.000	3110	Teflon Bronze - High Temperature	17.966 to 17.984	1270	82.50	63.50	41.50	22.00	Refer Tech Data Sheet
	<i>0.709</i>					<i>3.248</i>	<i>2.500</i>	<i>1.634</i>	<i>0.866</i>	

# Indicates item not stocked at time of printing - Please enquire for lead time

E&OE Pricing and all details subject to change without notice - Copyright Miniature Bearings Australia Pty Ltd

MBA Size Listings are a guide to sizes only and must not be solely relied on for critical design information.

## Bearings - Spyraflo - Flanged Housing - Self Aligning

Part Number	Nominal Shaft Size mm	Max. Radial Dynamic Load N	Material	Min to Max Shaft Dia. mm	Max Speed RPM	A mm	B mm	C mm	D mm	More Information
	<i>inches</i>			<i>inches</i>		<i>inches</i>	<i>inches</i>	<i>inches</i>	<i>inches</i>	
# HF3-18M-P	18.000 <i>0.709</i>	3110	Teflon Bronze	17.966 to 17.984	1270	82.50 <i>3.248</i>	63.50 <i>2.500</i>	41.50 <i>1.634</i>	22.00 <i>0.866</i>	Refer Tech Data Sheet
# HF3-18M-LT	18.000 <i>0.709</i>	3110	Teflon Bronze - Low Temperature	17.966 to 17.984	1270	82.50 <i>3.248</i>	63.50 <i>2.500</i>	41.50 <i>1.634</i>	22.00 <i>0.866</i>	Refer Tech Data Sheet
# HF3-18M-B	18.000 <i>0.709</i>	4000	Bronze SAE 840	18.030 to 18.050	5380	82.50 <i>3.248</i>	63.50 <i>2.500</i>	41.50 <i>1.634</i>	22.00 <i>0.866</i>	Refer Tech Data Sheet
# HF5-18M-N	18.000 <i>0.709</i>	9600	Needle Roller	17.989 to 18.000	14700	127.00 <i>5.000</i>	101.50 <i>3.996</i>	66.50 <i>2.618</i>	23.00 <i>0.906</i>	Refer Tech Data Sheet
HF3-750-B	19.050 <i>0.750</i>	3114	Bronze SAE 840	19.080 to 19.100	5090	82.55 <i>3.250</i>	63.50 <i>2.500</i>	41.40 <i>1.630</i>	22.35 <i>0.880</i>	Refer Tech Data Sheet
# HF3-750-HT	19.050 <i>0.750</i>	3114	Teflon Bronze - High Temperature	19.016 to 19.034	2010	57.15 <i>2.250</i>	63.50 <i>2.500</i>	41.40 <i>1.630</i>	22.35 <i>0.880</i>	Refer Tech Data Sheet
# HF3-750-LT	19.050 <i>0.750</i>	3114	Teflon Bronze - Low Temperature	19.016 to 19.034	2010	57.15 <i>2.250</i>	63.50 <i>2.500</i>	41.40 <i>1.630</i>	22.35 <i>0.880</i>	Refer Tech Data Sheet
# HF3-750-P	19.050 <i>0.750</i>	3114	Teflon Bronze	19.016 to 19.034	2010	82.55 <i>3.250</i>	63.50 <i>2.500</i>	41.40 <i>1.630</i>	22.35 <i>0.880</i>	Refer Tech Data Sheet

# Indicates item not stocked at time of printing - Please enquire for lead time

E&OE Pricing and all details subject to change without notice - Copyright Miniature Bearings Australia Pty Ltd

MBA Size Listings are a guide to sizes only and must not be solely relied on for critical design information.

## Bearings - Spyraflo - Flanged Housing - Self Aligning

Part Number	Nominal Shaft Size mm	Max. Radial Dynamic Load N	Material	Min to Max Shaft Dia. mm	Max Speed RPM	A mm	B mm	C mm	D mm	More Information
	<i>inches</i>			<i>inches</i>		<i>inches</i>	<i>inches</i>	<i>inches</i>	<i>inches</i>	
# HF4-750-B	19.050 <i>0.750</i>	4003	Bronze SAE 840	19.080 to 19.100	5090	101.60 <i>4.000</i>	79.50 <i>3.130</i>	47.75 <i>1.880</i>	23.11 <i>0.910</i>	Refer Tech Data Sheet
# HF5-750-N	19.050 <i>0.750</i>	8896	Needle Roller	19.039 to 19.050	14700	127.00 <i>5.000</i>	101.60 <i>4.000</i>	66.80 <i>2.630</i>	23.11 <i>0.910</i>	Refer Tech Data Sheet
# HF4-20M-B	20.000 <i>0.787</i>	4880	Bronze SAE 840	20.030 to 20.050	5200	158.00 <i>6.220</i>	123.00 <i>4.843</i>	74.00 <i>2.913</i>	23.00 <i>0.906</i>	Refer Tech Data Sheet
# HF4-20M-HT	20.000 <i>0.787</i>	6250	Teflon Bronze - High Temperature	19.959 to 19.980	1900	100.00 <i>3.937</i>	79.50 <i>3.130</i>	47.50 <i>1.870</i>	22.00 <i>0.866</i>	Refer Tech Data Sheet
# HF4-20M-LT	20.000 <i>0.787</i>	6250	Teflon Bronze - Low Temperature	19.959 to 19.980	1900	100.00 <i>3.937</i>	79.50 <i>3.130</i>	47.50 <i>1.870</i>	22.00 <i>0.866</i>	Refer Tech Data Sheet
HF4-875-B	22.225 <i>0.875</i>	4003	Bronze SAE 840	22.255 to 22.275	4850	101.60 <i>4.000</i>	79.50 <i>3.130</i>	47.75 <i>1.880</i>	23.11 <i>0.910</i>	Refer Tech Data Sheet
# HF5-25M-B	25.000 <i>0.984</i>	7260	Bronze SAE 840	25.030 to 25.070	4600	127.00 <i>5.000</i>	101.50 <i>3.996</i>	66.50 <i>2.618</i>	23.00 <i>0.906</i>	Refer Tech Data Sheet
# HF5-25M-P	25.000 <i>0.984</i>	9600	Teflon Bronze	24.966 to 24.984	1500	127.00 <i>5.000</i>	101.50 <i>3.996</i>	66.50 <i>2.618</i>	23.00 <i>0.906</i>	Refer Tech Data Sheet

# Indicates item not stocked at time of printing - Please enquire for lead time

E&OE Pricing and all details subject to change without notice - Copyright Miniature Bearings Australia Pty Ltd

MBA Size Listings are a guide to sizes only and must not be solely relied on for critical design information.

## Bearings - Spyraflo - Flanged Housing - Self Aligning

Part Number	Nominal Shaft Size mm	Max. Radial Dynamic Load N	Material	Min to Max Shaft Dia. mm	Max Speed RPM	A mm	B mm	C mm	D mm	More Information
	<i>inches</i>			<i>inches</i>		<i>inches</i>	<i>inches</i>	<i>inches</i>	<i>inches</i>	
# HF5-25M-LT	25.000	9600	Teflon Bronze - Low Temperature	24.959 to 24.980	1500	127.00	101.50	66.50	23.00	Refer Tech Data Sheet
	<i>0.984</i>					<i>5.000</i>	<i>3.996</i>	<i>2.618</i>	<i>0.906</i>	
# HF5-25M-HT	25.000	9600	Teflon Bronze - High Temperature	24.959 to 24.980	1500	127.00	101.50	66.50	23.00	Refer Tech Data Sheet
	<i>0.984</i>					<i>5.000</i>	<i>3.996</i>	<i>2.618</i>	<i>0.906</i>	
# HF5-1000-B	25.400	7117	Bronze SAE 840	25.430 to 25.470	4500	127.00	101.60	66.80	23.11	Refer Tech Data Sheet
	<i>1.000</i>					<i>5.000</i>	<i>4.000</i>	<i>2.630</i>	<i>0.910</i>	
# HF5-1000-LT	25.400	9786	Teflon Bronze - Low Temperature	25.359 to 25.380	1500	127.00	101.60	66.80	23.11	Refer Tech Data Sheet
	<i>1.000</i>					<i>5.000</i>	<i>4.000</i>	<i>2.630</i>	<i>0.910</i>	
# HF5-1000-P	25.400	9786	Teflon Bronze	25.366 to 25.384	1500	127.00	101.60	66.80	23.11	Refer Tech Data Sheet
	<i>1.000</i>					<i>5.000</i>	<i>4.000</i>	<i>2.630</i>	<i>0.910</i>	
# HF5-30M-B	30.000	8170	Bronze SAE 840	30.030 to 30.070	3850	127.00	101.50	66.50	24.00	Refer Tech Data Sheet
	<i>1.181</i>					<i>5.000</i>	<i>3.996</i>	<i>2.618</i>	<i>0.945</i>	
# HF5-1250-B	31.750	8007	Bronze SAE 840	31.780 to 31.820	3600	127.00	101.60	66.80	23.88	Refer Tech Data Sheet
	<i>1.250</i>					<i>5.000</i>	<i>4.000</i>	<i>2.630</i>	<i>0.940</i>	

# Indicates item not stocked at time of printing - Please enquire for lead time

E&OE Pricing and all details subject to change without notice - Copyright Miniature Bearings Australia Pty Ltd

MBA Size Listings are a guide to sizes only and must not be solely relied on for critical design information.



DISTRIBUTED BY

Ask us to put your name and address here

<http://www.minibearings.com.au/product>

Ph +61 7 3245 7977

Fax +61 7 3245 1017

Catalogue requests to [catalogues@minibearings.com.au](mailto:catalogues@minibearings.com.au)

