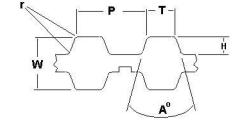




# MBA

## Belts - Timing - 2.032mm Pitch - MXL Double Sided



Standard Series Timing Belts 2.032mm or 0.080 inch pitch - Double Sided.

Pitch (P) - 2.032mm (0.08 inch).

Tooth Length (T) - 0.76mm.

Tooth Height (H) - 0.51mm.

Belt Height (W) - 1.52mm - Corner Radii ( r ) - 0.13mm.

Breaking strength is not indicative of working strength.

### Belts - Timing - 2.032mm Pitch - MXL Double Sided

Part Number	Teeth (No.)	Nom. Width (+/-0.2) mm	Length mm	Material	Reinforcement	Appearance	Breaking Strength N	Min Temperature Deg C	Max Temperature Deg C	Tooth Angle (A) Deg.
		<i>inches</i>	<i>inches</i>							
# BD-MX-132-031-PK	132	3.18	268.22	Polyurethane	Kevlar	Transparent Amber	356	-18	82	40
		<i>0.125</i>	<i>10.560</i>							
# BD-MX-132-047-PK	132	4.76	268.22	Polyurethane	Kevlar	Transparent Amber	533	-18	82	40
		<i>0.187</i>	<i>10.560</i>							

# Indicates item not stocked at time of printing - Please enquire for lead time

E&OE Pricing and all details subject to change without notice - Copyright Miniature Bearings Australia Pty Ltd

MBA Size Listings are a guide to sizes only and must not be solely relied on for critical design information.

## Belts - Timing - 2.032mm Pitch - MXL Double Sided

Part Number	Teeth (No.)	Nom. Width (+/-0.2) mm	Length mm	Material	Reinforcement	Appearance	Breaking Strength N	Min Temperature Deg C	Max Temperature Deg C	Tooth Angle (A) Deg.
		<i>inches</i>	<i>inches</i>							
# BD-MX-132-063-PK	132	6.35	268.22	Polyurethane	Kevlar	Transparent Amber	711	-18	82	40
		<i>0.250</i>	<i>10.560</i>							
# BD-MX-132-095-PK	132	9.53	268.22	Polyurethane	Kevlar	Transparent Amber	1067	-18	82	40
		<i>0.375</i>	<i>10.560</i>							
# BD-MX-136-031-PK	136	3.18	276.35	Polyurethane	Kevlar	Transparent Amber	356	-18	82	40
		<i>0.125</i>	<i>10.880</i>							
# BD-MX-136-047-PK	136	4.76	276.35	Polyurethane	Kevlar	Transparent Amber	533	-18	82	40
		<i>0.187</i>	<i>10.880</i>							
# BD-MX-136-063-PK	136	6.35	276.35	Polyurethane	Kevlar	Transparent Amber	711	-18	82	40
		<i>0.250</i>	<i>10.880</i>							
# BD-MX-136-095-PK	136	9.53	276.35	Polyurethane	Kevlar	Transparent Amber	1067	-18	82	40
		<i>0.375</i>	<i>10.880</i>							
# BD-MX-145-031-PK	145	3.18	294.64	Polyurethane	Kevlar	Transparent Amber	356	-18	82	40
		<i>0.125</i>	<i>11.600</i>							
# BD-MX-145-047-PK	145	4.76	294.64	Polyurethane	Kevlar	Transparent Amber	533	-18	82	40
		<i>0.187</i>	<i>11.600</i>							

# Indicates item not stocked at time of printing - Please enquire for lead time

E&OE Pricing and all details subject to change without notice - Copyright Miniature Bearings Australia Pty Ltd

MBA Size Listings are a guide to sizes only and must not be solely relied on for critical design information.

## Belts - Timing - 2.032mm Pitch - MXL Double Sided

Part Number	Teeth (No.)	Nom. Width (+/-0.2) mm	Length mm	Material	Reinforcement	Appearance	Breaking Strength N	Min Temperature Deg C	Max Temperature Deg C	Tooth Angle (A) Deg.
		<i>inches</i>	<i>inches</i>							
# BD-MX-145-063-PK	145	6.35 <i>0.250</i>	294.64 <i>11.600</i>	Polyurethane	Kevlar	Transparent Amber	711	-18	82	40
# BD-MX-145-095-PK	145	9.53 <i>0.375</i>	294.64 <i>11.600</i>	Polyurethane	Kevlar	Transparent Amber	1067	-18	82	40
# BD-MX-150-031-PK	150	3.18 <i>0.125</i>	304.80 <i>12.000</i>	Polyurethane	Kevlar	Transparent Amber	356	-18	82	40
# BD-MX-150-047-PK	150	4.76 <i>0.187</i>	304.80 <i>12.000</i>	Polyurethane	Kevlar	Transparent Amber	533	-18	82	40
# BD-MX-150-063-PK	150	6.35 <i>0.250</i>	304.80 <i>12.000</i>	Polyurethane	Kevlar	Transparent Amber	711	-18	82	40
# BD-MX-150-095-PK	150	9.53 <i>0.375</i>	304.80 <i>12.000</i>	Polyurethane	Kevlar	Transparent Amber	1067	-18	82	40
# BD-MX-155-031-PK	155	3.18 <i>0.125</i>	314.96 <i>12.400</i>	Polyurethane	Kevlar	Transparent Amber	578	-18	82	40
# BD-MX-155-047-PK	155	4.76 <i>0.187</i>	314.96 <i>12.400</i>	Polyurethane	Kevlar	Transparent Amber	867	-18	82	40

# Indicates item not stocked at time of printing - Please enquire for lead time

E&OE Pricing and all details subject to change without notice - Copyright Miniature Bearings Australia Pty Ltd

MBA Size Listings are a guide to sizes only and must not be solely relied on for critical design information.

## Belts - Timing - 2.032mm Pitch - MXL Double Sided

Part Number	Teeth (No.)	Nom. Width (+/-0.2) mm	Length mm	Material	Reinforcement	Appearance	Breaking Strength N	Min Temperature Deg C	Max Temperature Deg C	Tooth Angle (A) Deg.
		<i>inches</i>	<i>inches</i>							
# BD-MX-155-063-PK	155	6.35 <i>0.250</i>	314.96 <i>12.400</i>	Polyurethane	Kevlar	Transparent Amber	1156	-18	82	40
# BD-MX-155-095-PK	155	9.53 <i>0.375</i>	314.96 <i>12.400</i>	Polyurethane	Kevlar	Transparent Amber	1734	-18	82	40
# BD-MX-160-031-PK	160	3.18 <i>0.125</i>	325.12 <i>12.800</i>	Polyurethane	Kevlar	Transparent Amber	578	-18	82	40
# BD-MX-160-047-PK	160	4.76 <i>0.187</i>	325.12 <i>12.800</i>	Polyurethane	Kevlar	Transparent Amber	867	-18	82	40
# BD-MX-160-063-PK	160	6.35 <i>0.250</i>	325.12 <i>12.800</i>	Polyurethane	Kevlar	Transparent Amber	1156	-18	82	40
# BD-MX-160-095-PK	160	9.53 <i>0.375</i>	325.12 <i>12.800</i>	Polyurethane	Kevlar	Transparent Amber	1734	-18	82	40
# BD-MX-165-031-PK	165	3.18 <i>0.125</i>	335.28 <i>13.200</i>	Polyurethane	Kevlar	Transparent Amber	578	-18	82	40
# BD-MX-165-047-PK	165	4.76 <i>0.187</i>	335.28 <i>13.200</i>	Polyurethane	Kevlar	Transparent Amber	867	-18	82	40

# Indicates item not stocked at time of printing - Please enquire for lead time

E&OE Pricing and all details subject to change without notice - Copyright Miniature Bearings Australia Pty Ltd

MBA Size Listings are a guide to sizes only and must not be solely relied on for critical design information.

## Belts - Timing - 2.032mm Pitch - MXL Double Sided

Part Number	Teeth (No.)	Nom. Width (+/-0.2) mm	Length mm	Material	Reinforcement	Appearance	Breaking Strength N	Min Temperature Deg C	Max Temperature Deg C	Tooth Angle (A) Deg.
		<i>inches</i>	<i>inches</i>							
# BD-MX-165-063-PK	165	6.35	335.28	Polyurethane	Kevlar	Transparent Amber	1156	-18	82	40
		<i>0.250</i>	<i>13.200</i>							
# BD-MX-165-095-PK	165	9.53	335.28	Polyurethane	Kevlar	Transparent Amber	1734	-18	82	40
		<i>0.375</i>	<i>13.200</i>							
# BD-MX-170-031-PK	170	3.18	345.44	Polyurethane	Kevlar	Transparent Amber	578	-18	82	40
		<i>0.125</i>	<i>13.600</i>							
# BD-MX-170-047-PK	170	4.76	345.44	Polyurethane	Kevlar	Transparent Amber	867	-18	82	40
		<i>0.187</i>	<i>13.600</i>							
# BD-MX-170-063-PK	170	6.35	345.44	Polyurethane	Kevlar	Transparent Amber	1156	-18	82	40
		<i>0.250</i>	<i>13.600</i>							
# BD-MX-170-095-PK	170	9.53	345.44	Polyurethane	Kevlar	Transparent Amber	1734	-18	82	40
		<i>0.375</i>	<i>13.600</i>							
# BD-MX-175-031-PK	175	3.18	355.60	Polyurethane	Kevlar	Transparent Amber	578	-18	82	40
		<i>0.125</i>	<i>14.000</i>							
# BD-MX-175-047-PK	175	4.76	355.60	Polyurethane	Kevlar	Transparent Amber	867	-18	82	40
		<i>0.187</i>	<i>14.000</i>							

# Indicates item not stocked at time of printing - Please enquire for lead time

E&OE Pricing and all details subject to change without notice - Copyright Miniature Bearings Australia Pty Ltd

MBA Size Listings are a guide to sizes only and must not be solely relied on for critical design information.

## Belts - Timing - 2.032mm Pitch - MXL Double Sided

Part Number	Teeth (No.)	Nom. Width (+/-0.2) mm	Length mm	Material	Reinforcement	Appearance	Breaking Strength N	Min Temperature Deg C	Max Temperature Deg C	Tooth Angle (A) Deg.
		<i>inches</i>	<i>inches</i>							
# BD-MX-175-063-PK	175	6.35	355.60	Polyurethane	Kevlar	Transparent Amber	1156	-18	82	40
		<i>0.250</i>	<i>14.000</i>							
# BD-MX-175-095-PK	175	9.53	355.60	Polyurethane	Kevlar	Transparent Amber	1734	-18	82	40
		<i>0.375</i>	<i>14.000</i>							
# BD-MX-180-031-PK	180	3.18	365.76	Polyurethane	Kevlar	Transparent Amber	578	-18	82	40
		<i>0.125</i>	<i>14.400</i>							
# BD-MX-180-047-PK	180	4.76	365.76	Polyurethane	Kevlar	Transparent Amber	867	-18	82	40
		<i>0.187</i>	<i>14.400</i>							
# BD-MX-180-063-PK	180	6.35	365.76	Polyurethane	Kevlar	Transparent Amber	1156	-18	82	40
		<i>0.250</i>	<i>14.400</i>							
# BD-MX-180-095-PK	180	9.53	365.76	Polyurethane	Kevlar	Transparent Amber	1734	-18	82	40
		<i>0.375</i>	<i>14.400</i>							
# BD-MX-185-031-PK	185	3.18	375.92	Polyurethane	Kevlar	Transparent Amber	578	-18	82	40
		<i>0.125</i>	<i>14.800</i>							
# BD-MX-185-047-PK	185	4.76	375.92	Polyurethane	Kevlar	Transparent Amber	867	-18	82	40
		<i>0.187</i>	<i>14.800</i>							

# Indicates item not stocked at time of printing - Please enquire for lead time

E&OE Pricing and all details subject to change without notice - Copyright Miniature Bearings Australia Pty Ltd

MBA Size Listings are a guide to sizes only and must not be solely relied on for critical design information.

## Belts - Timing - 2.032mm Pitch - MXL Double Sided

Part Number	Teeth (No.)	Nom. Width (+/-0.2) mm	Length mm	Material	Reinforcement	Appearance	Breaking Strength N	Min Temperature Deg C	Max Temperature Deg C	Tooth Angle (A) Deg.
		<i>inches</i>	<i>inches</i>							
# BD-MX-185-063-PK	185	6.35	375.92	Polyurethane	Kevlar	Transparent Amber	1156	-18	82	40
		<i>0.250</i>	<i>14.800</i>							
# BD-MX-185-095-PK	185	9.53	375.92	Polyurethane	Kevlar	Transparent Amber	1734	-18	82	40
		<i>0.375</i>	<i>14.800</i>							
# BD-MX-190-031-PK	190	3.18	386.08	Polyurethane	Kevlar	Transparent Amber	578	-18	82	40
		<i>0.125</i>	<i>15.200</i>							
# BD-MX-190-047-PK	190	4.76	386.08	Polyurethane	Kevlar	Transparent Amber	867	-18	82	40
		<i>0.187</i>	<i>15.200</i>							
# BD-MX-190-063-PK	190	6.35	386.08	Polyurethane	Kevlar	Transparent Amber	1156	-18	82	40
		<i>0.250</i>	<i>15.200</i>							
# BD-MX-190-095-PK	190	9.53	386.08	Polyurethane	Kevlar	Transparent Amber	1734	-18	82	40
		<i>0.375</i>	<i>15.200</i>							
# BD-MX-195-031-PK	195	3.18	396.24	Polyurethane	Kevlar	Transparent Amber	578	-18	82	40
		<i>0.125</i>	<i>15.600</i>							
# BD-MX-195-047-PK	195	4.76	396.24	Polyurethane	Kevlar	Transparent Amber	867	-18	82	40
		<i>0.187</i>	<i>15.600</i>							

# Indicates item not stocked at time of printing - Please enquire for lead time

E&OE Pricing and all details subject to change without notice - Copyright Miniature Bearings Australia Pty Ltd

MBA Size Listings are a guide to sizes only and must not be solely relied on for critical design information.

## Belts - Timing - 2.032mm Pitch - MXL Double Sided

Part Number	Teeth (No.)	Nom. Width (+/-0.2) mm	Length mm	Material	Reinforcement	Appearance	Breaking Strength N	Min Temperature Deg C	Max Temperature Deg C	Tooth Angle (A) Deg.
		<i>inches</i>	<i>inches</i>							
# BD-MX-195-063-PK	195	6.35	396.24	Polyurethane	Kevlar	Transparent Amber	1156	-18	82	40
		<i>0.250</i>	<i>15.600</i>							
# BD-MX-195-095-PK	195	9.53	396.24	Polyurethane	Kevlar	Transparent Amber	1734	-18	82	40
		<i>0.375</i>	<i>15.600</i>							
# BD-MX-200-031-PK	200	3.18	406.40	Polyurethane	Kevlar	Transparent Amber	578	-18	82	40
		<i>0.125</i>	<i>16.000</i>							
# BD-MX-200-047-PK	200	4.76	406.40	Polyurethane	Kevlar	Transparent Amber	867	-18	82	40
		<i>0.187</i>	<i>16.000</i>							
# BD-MX-200-063-PK	200	6.35	406.40	Polyurethane	Kevlar	Transparent Amber	1156	-18	82	40
		<i>0.250</i>	<i>16.000</i>							
# BD-MX-200-095-PK	200	9.53	406.40	Polyurethane	Kevlar	Transparent Amber	1734	-18	82	40
		<i>0.375</i>	<i>16.000</i>							
# BD-MX-212-031-PK	212	3.18	430.78	Polyurethane	Kevlar	Transparent Amber	578	-18	82	40
		<i>0.125</i>	<i>16.960</i>							
# BD-MX-212-047-PK	212	4.76	430.78	Polyurethane	Kevlar	Transparent Amber	867	-18	82	40
		<i>0.187</i>	<i>16.960</i>							

# Indicates item not stocked at time of printing - Please enquire for lead time

E&OE Pricing and all details subject to change without notice - Copyright Miniature Bearings Australia Pty Ltd

MBA Size Listings are a guide to sizes only and must not be solely relied on for critical design information.

## Belts - Timing - 2.032mm Pitch - MXL Double Sided

Part Number	Teeth (No.)	Nom. Width (+/-0.2) mm	Length mm	Material	Reinforcement	Appearance	Breaking Strength N	Min Temperature Deg C	Max Temperature Deg C	Tooth Angle (A) Deg.
		<i>inches</i>	<i>inches</i>							
# BD-MX-212-063-PK	212	6.35	430.78	Polyurethane	Kevlar	Transparent Amber	1156	-18	82	40
		<i>0.250</i>	<i>16.960</i>							
# BD-MX-212-095-PK	212	9.53	430.78	Polyurethane	Kevlar	Transparent Amber	1734	-18	82	40
		<i>0.375</i>	<i>16.960</i>							
# BD-MX-236-031-PK	236	3.18	479.55	Polyurethane	Kevlar	Transparent Amber	578	-18	82	40
		<i>0.125</i>	<i>18.880</i>							
# BD-MX-236-047-PK	236	4.76	479.55	Polyurethane	Kevlar	Transparent Amber	867	-18	82	40
		<i>0.187</i>	<i>18.880</i>							
# BD-MX-236-063-PK	236	6.35	479.55	Polyurethane	Kevlar	Transparent Amber	1156	-18	82	40
		<i>0.250</i>	<i>18.880</i>							
# BD-MX-236-095-PK	236	9.53	479.55	Polyurethane	Kevlar	Transparent Amber	1734	-18	82	40
		<i>0.375</i>	<i>18.880</i>							
# BD-MX-250-031-PK	250	3.18	508.00	Polyurethane	Kevlar	Transparent Amber	578	-18	82	40
		<i>0.125</i>	<i>20.000</i>							
# BD-MX-250-047-PK	250	4.76	508.00	Polyurethane	Kevlar	Transparent Amber	867	-18	82	40
		<i>0.187</i>	<i>20.000</i>							

# Indicates item not stocked at time of printing - Please enquire for lead time

E&OE Pricing and all details subject to change without notice - Copyright Miniature Bearings Australia Pty Ltd

MBA Size Listings are a guide to sizes only and must not be solely relied on for critical design information.

## Belts - Timing - 2.032mm Pitch - MXL Double Sided

Part Number	Teeth (No.)	Nom. Width (+/-0.2) mm	Length mm	Material	Reinforcement	Appearance	Breaking Strength N	Min Temperature Deg C	Max Temperature Deg C	Tooth Angle (A) Deg.
		<i>inches</i>	<i>inches</i>							
# BD-MX-250-063-PK	250	6.35	508.00	Polyurethane	Kevlar	Transparent Amber	1156	-18	82	40
		<i>0.250</i>	<i>20.000</i>							
# BD-MX-250-095-PK	250	9.53	508.00	Polyurethane	Kevlar	Transparent Amber	1734	-18	82	40
		<i>0.375</i>	<i>20.000</i>							
# BD-MX-265-031-PK	265	3.18	538.48	Polyurethane	Kevlar	Transparent Amber	578	-18	82	40
		<i>0.125</i>	<i>21.200</i>							
# BD-MX-265-047-PK	265	4.76	538.48	Polyurethane	Kevlar	Transparent Amber	867	-18	82	40
		<i>0.187</i>	<i>21.200</i>							
# BD-MX-265-063-PK	265	6.35	538.48	Polyurethane	Kevlar	Transparent Amber	1156	-18	82	40
		<i>0.250</i>	<i>21.200</i>							
# BD-MX-265-095-PK	265	9.53	538.48	Polyurethane	Kevlar	Transparent Amber	1734	-18	82	40
		<i>0.375</i>	<i>21.200</i>							
# BD-MX-280-031-PK	280	3.18	568.96	Polyurethane	Kevlar	Transparent Amber	578	-18	82	40
		<i>0.125</i>	<i>22.400</i>							
# BD-MX-280-047-PK	280	4.76	568.96	Polyurethane	Kevlar	Transparent Amber	867	-18	82	40
		<i>0.187</i>	<i>22.400</i>							

# Indicates item not stocked at time of printing - Please enquire for lead time

E&OE Pricing and all details subject to change without notice - Copyright Miniature Bearings Australia Pty Ltd

MBA Size Listings are a guide to sizes only and must not be solely relied on for critical design information.

## Belts - Timing - 2.032mm Pitch - MXL Double Sided

Part Number	Teeth (No.)	Nom. Width (+/-0.2) mm	Length mm	Material	Reinforcement	Appearance	Breaking Strength N	Min Temperature Deg C	Max Temperature Deg C	Tooth Angle (A) Deg.
		<i>inches</i>	<i>inches</i>							
# BD-MX-280-063-PK	280	6.35	568.96	Polyurethane	Kevlar	Transparent Amber	1156	-18	82	40
		<i>0.250</i>	<i>22.400</i>							
# BD-MX-280-095-PK	280	9.53	568.96	Polyurethane	Kevlar	Transparent Amber	1734	-18	82	40
		<i>0.375</i>	<i>22.400</i>							
# BD-MX-300-031-PK	300	3.18	609.60	Polyurethane	Kevlar	Transparent Amber	578	-18	82	40
		<i>0.125</i>	<i>24.000</i>							
# BD-MX-300-047-PK	300	4.76	609.60	Polyurethane	Kevlar	Transparent Amber	867	-18	82	40
		<i>0.187</i>	<i>24.000</i>							
# BD-MX-300-063-PK	300	6.35	609.60	Polyurethane	Kevlar	Transparent Amber	1156	-18	82	40
		<i>0.250</i>	<i>24.000</i>							
# BD-MX-300-095-PK	300	9.53	609.60	Polyurethane	Kevlar	Transparent Amber	1734	-18	82	40
		<i>0.375</i>	<i>24.000</i>							
# BD-MX-315-031-PK	315	3.18	640.08	Polyurethane	Kevlar	Transparent Amber	578	-18	82	40
		<i>0.125</i>	<i>25.200</i>							
# BD-MX-315-047-PK	315	4.76	640.08	Polyurethane	Kevlar	Transparent Amber	867	-18	82	40
		<i>0.187</i>	<i>25.200</i>							

# Indicates item not stocked at time of printing - Please enquire for lead time

E&OE Pricing and all details subject to change without notice - Copyright Miniature Bearings Australia Pty Ltd

MBA Size Listings are a guide to sizes only and must not be solely relied on for critical design information.

## Belts - Timing - 2.032mm Pitch - MXL Double Sided

Part Number	Teeth (No.)	Nom. Width (+/-0.2) mm	Length mm	Material	Reinforcement	Appearance	Breaking Strength N	Min Temperature Deg C	Max Temperature Deg C	Tooth Angle (A) Deg.
		<i>inches</i>	<i>inches</i>							
# BD-MX-315-063-PK	315	6.35	640.08	Polyurethane	Kevlar	Transparent Amber	1156	-18	82	40
		<i>0.250</i>	<i>25.200</i>							
# BD-MX-315-095-PK	315	9.53	640.08	Polyurethane	Kevlar	Transparent Amber	1734	-18	82	40
		<i>0.375</i>	<i>25.200</i>							
# BD-MX-335-031-PK	335	3.18	680.72	Polyurethane	Kevlar	Transparent Amber	578	-18	82	40
		<i>0.125</i>	<i>26.800</i>							
# BD-MX-335-047-PK	335	4.76	680.72	Polyurethane	Kevlar	Transparent Amber	867	-18	82	40
		<i>0.187</i>	<i>26.800</i>							
# BD-MX-335-063-PK	335	6.35	680.72	Polyurethane	Kevlar	Transparent Amber	1156	-18	82	40
		<i>0.250</i>	<i>26.800</i>							
# BD-MX-335-095-PK	335	9.53	680.72	Polyurethane	Kevlar	Transparent Amber	1734	-18	82	40
		<i>0.375</i>	<i>26.800</i>							
# BD-MX-355-031-PK	355	3.18	721.36	Polyurethane	Kevlar	Transparent Amber	578	-18	82	40
		<i>0.125</i>	<i>28.400</i>							
# BD-MX-355-047-PK	355	4.76	721.36	Polyurethane	Kevlar	Transparent Amber	867	-18	82	40
		<i>0.187</i>	<i>28.400</i>							

# Indicates item not stocked at time of printing - Please enquire for lead time

E&OE Pricing and all details subject to change without notice - Copyright Miniature Bearings Australia Pty Ltd

MBA Size Listings are a guide to sizes only and must not be solely relied on for critical design information.

## Belts - Timing - 2.032mm Pitch - MXL Double Sided

Part Number	Teeth (No.)	Nom. Width (+/-0.2) mm	Length mm	Material	Reinforcement	Appearance	Breaking Strength N	Min Temperature Deg C	Max Temperature Deg C	Tooth Angle (A) Deg.
		<i>inches</i>	<i>inches</i>							
# BD-MX-355-063-PK	355	6.35	721.36	Polyurethane	Kevlar	Transparent Amber	1156	-18	82	40
		<i>0.250</i>	<i>28.400</i>							
# BD-MX-355-095-PK	355	9.53	721.36	Polyurethane	Kevlar	Transparent Amber	1734	-18	82	40
		<i>0.375</i>	<i>28.400</i>							
# BD-MX-400-031-PK	400	3.18	812.80	Polyurethane	Kevlar	Transparent Amber	578	-18	82	40
		<i>0.125</i>	<i>32.000</i>							
# BD-MX-400-047-PK	400	4.76	812.80	Polyurethane	Kevlar	Transparent Amber	867	-18	82	40
		<i>0.187</i>	<i>32.000</i>							
# BD-MX-400-063-PK	400	6.35	812.80	Polyurethane	Kevlar	Transparent Amber	1156	-18	82	40
		<i>0.250</i>	<i>32.000</i>							
# BD-MX-400-095-PK	400	9.53	812.80	Polyurethane	Kevlar	Transparent Amber	1734	-18	82	40
		<i>0.375</i>	<i>32.000</i>							
# BD-MX-475-031-PK	475	3.18	965.20	Polyurethane	Kevlar	Transparent Amber	578	-18	82	40
		<i>0.125</i>	<i>38.000</i>							
# BD-MX-475-047-PK	475	4.76	965.20	Polyurethane	Kevlar	Transparent Amber	867	-18	82	40
		<i>0.187</i>	<i>38.000</i>							

# Indicates item not stocked at time of printing - Please enquire for lead time

E&OE Pricing and all details subject to change without notice - Copyright Miniature Bearings Australia Pty Ltd

MBA Size Listings are a guide to sizes only and must not be solely relied on for critical design information.

## Belts - Timing - 2.032mm Pitch - MXL Double Sided

Part Number	Teeth (No.)	Nom. Width (+/-0.2) mm	Length mm	Material	Reinforcement	Appearance	Breaking Strength N	Min Temperature Deg C	Max Temperature Deg C	Tooth Angle (A) Deg.
		<i>inches</i>	<i>inches</i>							
# BD-MX-475-063-PK	475	6.35	965.20	Polyurethane	Kevlar	Transparent Amber	1156	-18	82	40
		<i>0.250</i>	<i>38.000</i>							
# BD-MX-475-095-PK	475	9.53	965.20	Polyurethane	Kevlar	Transparent Amber	1734	-18	82	40
		<i>0.375</i>	<i>38.000</i>							
# BD-MX-500-031-PK	500	3.18	1016.00	Polyurethane	Kevlar	Transparent Amber	578	-18	82	40
		<i>0.125</i>	<i>40.000</i>							
# BD-MX-500-047-PK	500	4.76	1016.00	Polyurethane	Kevlar	Transparent Amber	867	-18	82	40
		<i>0.187</i>	<i>40.000</i>							
# BD-MX-500-063-PK	500	6.35	1016.00	Polyurethane	Kevlar	Transparent Amber	1156	-18	82	40
		<i>0.250</i>	<i>40.000</i>							
# BD-MX-500-095-PK	500	9.53	1016.00	Polyurethane	Kevlar	Transparent Amber	1734	-18	82	40
		<i>0.375</i>	<i>40.000</i>							

# Indicates item not stocked at time of printing - Please enquire for lead time

E&OE Pricing and all details subject to change without notice - Copyright Miniature Bearings Australia Pty Ltd

MBA Size Listings are a guide to sizes only and must not be solely relied on for critical design information.



DISTRIBUTED BY

Ask us to put your name and address here

<http://www.minibearings.com.au/product>

Ph +61 7 3245 7977

Fax +61 7 3245 1017

Catalogue requests to [catalogues@minibearings.com.au](mailto:catalogues@minibearings.com.au)

