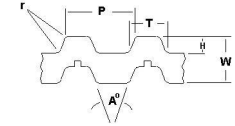




MBA

Belts - Timing - 5.000mm Pitch - T5 Double Sided



T Series Metric Timing Belts.

Pitch (P) - 5.000mm.

Tooth Length (T) - 1.40mm.

Tooth Height (H) - 1.20mm.

Belt Height (W) - 3.30mm - Corner Radii (r) - 0.40mm.

Breaking strength is not indicative of working strength.

Belts - Timing - 5.000mm Pitch - T5 Double Sided

Part Number	Teeth (No.)	Nom. Width mm	Length mm	Material	Reinforcement	Appearance	Breaking Strength N	Min Temperature Deg C	Max Temperature Deg C	Tooth Angle (A) Deg.
		<i>inches</i>	<i>inches</i>							
# BD-T5-082-050-PF	82	5.00 <i>0.197</i>	410.00 <i>16.142</i>	Polyurethane	Fibreglass	Translucent	595	-18	82	40
# BD-T5-082-100-PF	82	10.00 <i>0.394</i>	410.00 <i>16.142</i>	Polyurethane	Fibreglass	Translucent	1190	-18	82	40
# BD-T5-082-150-PF	82	15.00 <i>0.591</i>	410.00 <i>16.142</i>	Polyurethane	Fibreglass	Translucent	1785	-18	82	40

Indicates item not stocked at time of printing - Please enquire for lead time

E&OE Pricing and all details subject to change without notice - Copyright Miniature Bearings Australia Pty Ltd

MBA Size Listings are a guide to sizes only and must not be solely relied on for critical design information.

Belts - Timing - 5.000mm Pitch - T5 Double Sided

Part Number	Teeth (No.)	Nom. Width mm	Length mm	Material	Reinforcement	Appearance	Breaking Strength N	Min Temperature Deg C	Max Temperature Deg C	Tooth Angle (A) Deg.
		<i>inches</i>	<i>inches</i>							
# BD-T5-092-050-PF	92	5.00 <i>0.197</i>	460.00 <i>18.110</i>	Polyurethane	Fibreglass	Translucent	595	-18	82	40
# BD-T5-092-100-PF	92	10.00 <i>0.394</i>	460.00 <i>18.110</i>	Polyurethane	Fibreglass	Translucent	1190	-18	82	40
# BD-T5-092-150-PF	92	15.00 <i>0.591</i>	460.00 <i>18.110</i>	Polyurethane	Fibreglass	Translucent	1785	-18	82	40
# BD-T5-096-050-PF	96	5.00 <i>0.197</i>	480.00 <i>18.898</i>	Polyurethane	Fibreglass	Translucent	595	-18	82	40
# BD-T5-096-100-PF	96	10.00 <i>0.394</i>	480.00 <i>18.898</i>	Polyurethane	Fibreglass	Translucent	1190	-18	82	40
# BD-T5-096-150-PF	96	15.00 <i>0.591</i>	480.00 <i>18.898</i>	Polyurethane	Fibreglass	Translucent	1785	-18	82	40
# BD-T5-103-050-PF	103	5.00 <i>0.197</i>	515.00 <i>20.276</i>	Polyurethane	Fibreglass	Translucent	595	-18	82	40
# BD-T5-103-100-PF	103	10.00 <i>0.394</i>	515.00 <i>20.276</i>	Polyurethane	Fibreglass	Translucent	1190	-18	82	40
# BD-T5-103-150-PF	103	15.00 <i>0.591</i>	515.00 <i>20.276</i>	Polyurethane	Fibreglass	Translucent	1785	-18	82	40
# BD-T5-118-050-PF	118	5.00 <i>0.197</i>	590.00 <i>23.228</i>	Polyurethane	Fibreglass	Translucent	595	-18	82	40

Indicates item not stocked at time of printing - Please enquire for lead time

E&OE Pricing and all details subject to change without notice - Copyright Miniature Bearings Australia Pty Ltd

MBA Size Listings are a guide to sizes only and must not be solely relied on for critical design information.

Belts - Timing - 5.000mm Pitch - T5 Double Sided

Part Number	Teeth (No.)	Nom. Width mm <i>inches</i>	Length mm <i>inches</i>	Material	Reinforcement	Appearance	Breaking Strength N	Min Temperature Deg C	Max Temperature Deg C	Tooth Angle (A) Deg.
# BD-T5-118-100-PF	118	10.00 <i>0.394</i>	590.00 <i>23.228</i>	Polyurethane	Fibreglass	Translucent	1190	-18	82	40
# BD-T5-118-150-PF	118	15.00 <i>0.591</i>	590.00 <i>23.228</i>	Polyurethane	Fibreglass	Translucent	1785	-18	82	40
# BD-T5-124-050-PF	124	5.00 <i>0.197</i>	620.00 <i>24.409</i>	Polyurethane	Fibreglass	Translucent	595	-18	82	40
# BD-T5-124-100-PF	124	10.00 <i>0.394</i>	620.00 <i>24.409</i>	Polyurethane	Fibreglass	Translucent	1190	-18	82	40
# BD-T5-124-150-PF	124	15.00 <i>0.591</i>	620.00 <i>24.409</i>	Polyurethane	Fibreglass	Translucent	1785	-18	82	40
# BD-T5-140-050-PF	140	5.00 <i>0.197</i>	700.00 <i>27.559</i>	Polyurethane	Fibreglass	Translucent	595	-18	82	40
# BD-T5-140-100-PF	140	10.00 <i>0.394</i>	700.00 <i>27.559</i>	Polyurethane	Fibreglass	Translucent	1190	-18	82	40
# BD-T5-140-150-PF	140	15.00 <i>0.591</i>	700.00 <i>27.559</i>	Polyurethane	Fibreglass	Translucent	1785	-18	82	40
# BD-T5-150-050-PF	150	5.00 <i>0.197</i>	750.00 <i>29.528</i>	Polyurethane	Fibreglass	Translucent	595	-18	82	40
# BD-T5-150-100-PF	150	10.00 <i>0.394</i>	750.00 <i>29.528</i>	Polyurethane	Fibreglass	Translucent	1190	-18	82	40

Indicates item not stocked at time of printing - Please enquire for lead time

E&OE Pricing and all details subject to change without notice - Copyright Miniature Bearings Australia Pty Ltd

MBA Size Listings are a guide to sizes only and must not be solely relied on for critical design information.

Belts - Timing - 5.000mm Pitch - T5 Double Sided

Part Number	Teeth (No.)	Nom. Width mm	Length mm	Material	Reinforcement	Appearance	Breaking Strength N	Min Temperature Deg C	Max Temperature Deg C	Tooth Angle (A) Deg.
		<i>inches</i>	<i>inches</i>							
# BD-T5-150-150-PF	150	15.00 <i>0.591</i>	750.00 <i>29.528</i>	Polyurethane	Fibreglass	Translucent	1785	-18	82	40
# BD-T5-160-050-PF	160	5.00 <i>0.197</i>	800.00 <i>31.496</i>	Polyurethane	Fibreglass	Translucent	595	-18	82	40
# BD-T5-160-100-PF	160	10.00 <i>0.394</i>	800.00 <i>31.496</i>	Polyurethane	Fibreglass	Translucent	1190	-18	82	40
# BD-T5-163-050-PF	163	5.00 <i>0.197</i>	815.00 <i>32.087</i>	Polyurethane	Fibreglass	Translucent	595	-18	82	40
# BD-T5-163-100-PF	163	10.00 <i>0.394</i>	815.00 <i>32.087</i>	Polyurethane	Fibreglass	Translucent	1190	-18	82	40
# BD-T5-172-050-PF	172	5.00 <i>0.197</i>	860.00 <i>33.858</i>	Polyurethane	Fibreglass	Translucent	595	-18	82	40
# BD-T5-172-100-PF	172	10.00 <i>0.394</i>	860.00 <i>33.858</i>	Polyurethane	Fibreglass	Translucent	1190	-18	82	40
# BD-T5-172-150-PF	172	15.00 <i>0.591</i>	860.00 <i>33.858</i>	Polyurethane	Fibreglass	Translucent	1785	-18	82	40
# BD-T5-188-050-PF	188	5.00 <i>0.197</i>	940.00 <i>37.008</i>	Polyurethane	Fibreglass	Translucent	595	-18	82	40
# BD-T5-188-100-PF	188	10.00 <i>0.394</i>	940.00 <i>37.008</i>	Polyurethane	Fibreglass	Translucent	1190	-18	82	40

Indicates item not stocked at time of printing - Please enquire for lead time

E&OE Pricing and all details subject to change without notice - Copyright Miniature Bearings Australia Pty Ltd

MBA Size Listings are a guide to sizes only and must not be solely relied on for critical design information.

Belts - Timing - 5.000mm Pitch - T5 Double Sided

Part Number	Teeth (No.)	Nom. Width mm	Length mm	Material	Reinforcement	Appearance	Breaking Strength N	Min Temperature Deg C	Max Temperature Deg C	Tooth Angle (A) Deg.
		<i>inches</i>	<i>inches</i>							
# BD-T5-188-150-PF	188	15.00 <i>0.591</i>	940.00 <i>37.008</i>	Polyurethane	Fibreglass	Translucent	1785	-18	82	40
# BD-T5-220-050-PF	220	5.00 <i>0.197</i>	1100.00 <i>43.307</i>	Polyurethane	Fibreglass	Translucent	595	-18	82	40
# BD-T5-220-100-PF	220	10.00 <i>0.394</i>	1100.00 <i>43.307</i>	Polyurethane	Fibreglass	Translucent	1190	-18	82	40
# BD-T5-220-150-PF	220	15.00 <i>0.591</i>	1100.00 <i>43.307</i>	Polyurethane	Fibreglass	Translucent	1785	-18	82	40

Indicates item not stocked at time of printing - Please enquire for lead time

E&OE Pricing and all details subject to change without notice - Copyright Miniature Bearings Australia Pty Ltd

MBA Size Listings are a guide to sizes only and must not be solely relied on for critical design information.



DISTRIBUTED BY

Ask us to put your name and address here

<http://www.minibearings.com.au/product>

Ph +61 7 3245 7977

Fax +61 7 3245 1017

Catalogue requests to catalogues@minibearings.com.au

