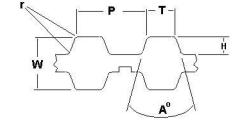




MBA

Belts - Timing - 5.080mm Pitch - XL Double Sided



Standard Series Timing Belts 5.080mm or 0.200 inch pitch - Double Sided.

Pitch (P) - 5.080mm (0.200 inch).

Tooth Length (T) - 1.40mm.

Tooth Height (H) - 1.20mm.

Belt Height (W) - 3.00mm - Corner Radii (r) - 0.40mm.

Breaking strength is not indicative of working strength.

Belts - Timing - 5.080mm Pitch - XL Double Sided

| Part Number | Teeth (No.) | Nom. Width (+/-0.2) mm | Length mm | Material | Reinforcement | Appearance | Breaking Strength N | Min Temperature Deg C | Max Temperature Deg C | Tooth Angle (A) Deg. |
|--------------------|-------------|---------------------------|---------------|---------------------------|---------------|------------|------------------------|-----------------------------|-----------------------------|-------------------------|
| | | <i>inches</i> | <i>inches</i> | | | | | | | |
| # BD-XL-030-063-NF | 30 | 6.35 | 152.40 | Nylon Covered Neoprene | Fibreglass | Black | 1003 | -34 | 85 | 50 |
| | | <i>0.250</i> | <i>6.000</i> | | | | | | | |
| # BD-XL-030-079-NF | 30 | 7.94 | 152.40 | Nylon Covered Neoprene | Fibreglass | Black | 1254 | -34 | 85 | 50 |
| | | <i>0.313</i> | <i>6.000</i> | | | | | | | |

Indicates item not stocked at time of printing - Please enquire for lead time

E&OE Pricing and all details subject to change without notice - Copyright Miniature Bearings Australia Pty Ltd

MBA Size Listings are a guide to sizes only and must not be solely relied on for critical design information.

Belts - Timing - 5.080mm Pitch - XL Double Sided

| Part Number | Teeth (No.) | Nom. Width (+/-0.2) mm | Length mm | Material | Reinforcement | Appearance | Breaking Strength N | Min Temperature Deg C | Max Temperature Deg C | Tooth Angle (A) Deg. |
|--------------------|-------------|---------------------------|------------------------|---------------------------|---------------|------------|------------------------|-----------------------------|-----------------------------|-------------------------|
| | | <i>inches</i> | <i>inches</i> | | | | | | | |
| # BD-XL-030-095-NF | 30 | 9.53 <i>0.375</i> | 152.40 <i>6.000</i> | Nylon Covered Neoprene | Fibreglass | Black | 1505 | -34 | 85 | 50 |
| # BD-XL-035-063-NF | 35 | 6.35 <i>0.250</i> | 177.80 <i>7.000</i> | Nylon Covered Neoprene | Fibreglass | Black | 1003 | -34 | 85 | 50 |
| # BD-XL-035-079-NF | 35 | 7.94 <i>0.313</i> | 177.80 <i>7.000</i> | Nylon Covered Neoprene | Fibreglass | Black | 1254 | -34 | 85 | 50 |
| # BD-XL-035-095-NF | 35 | 9.53 <i>0.375</i> | 177.80 <i>7.000</i> | Nylon Covered Neoprene | Fibreglass | Black | 1505 | -34 | 85 | 50 |
| # BD-XL-040-063-NF | 40 | 6.35 <i>0.250</i> | 203.20 <i>8.000</i> | Nylon Covered Neoprene | Fibreglass | Black | 1003 | -34 | 85 | 50 |
| # BD-XL-040-079-NF | 40 | 7.94 <i>0.313</i> | 203.20 <i>8.000</i> | Nylon Covered Neoprene | Fibreglass | Black | 1254 | -34 | 85 | 50 |
| # BD-XL-040-095-NF | 40 | 9.53 <i>0.375</i> | 203.20 <i>8.000</i> | Nylon Covered Neoprene | Fibreglass | Black | 1505 | -34 | 85 | 50 |
| # BD-XL-045-063-NF | 45 | 6.35 <i>0.250</i> | 228.60 <i>9.000</i> | Nylon Covered Neoprene | Fibreglass | Black | 1003 | -34 | 85 | 50 |

Indicates item not stocked at time of printing - Please enquire for lead time

E&OE Pricing and all details subject to change without notice - Copyright Miniature Bearings Australia Pty Ltd

MBA Size Listings are a guide to sizes only and must not be solely relied on for critical design information.

Belts - Timing - 5.080mm Pitch - XL Double Sided

| Part Number | Teeth (No.) | Nom. Width (+/-0.2) mm | Length mm | Material | Reinforcement | Appearance | Breaking Strength N | Min Temperature Deg C | Max Temperature Deg C | Tooth Angle (A) Deg. |
|--------------------|-------------|---------------------------|-------------------------|---------------------------|---------------|------------|------------------------|-----------------------------|-----------------------------|-------------------------|
| | | <i>inches</i> | <i>inches</i> | | | | | | | |
| # BD-XL-045-079-NF | 45 | 7.94 <i>0.313</i> | 228.60 <i>9.000</i> | Nylon Covered Neoprene | Fibreglass | Black | 1254 | -34 | 85 | 50 |
| # BD-XL-045-095-NF | 45 | 9.53 <i>0.375</i> | 228.60 <i>9.000</i> | Nylon Covered Neoprene | Fibreglass | Black | 1505 | -34 | 85 | 50 |
| # BD-XL-050-063-NF | 50 | 6.35 <i>0.250</i> | 254.00 <i>10.000</i> | Nylon Covered Neoprene | Fibreglass | Black | 1003 | -34 | 85 | 50 |
| # BD-XL-050-079-NF | 50 | 7.94 <i>0.313</i> | 254.00 <i>10.000</i> | Nylon Covered Neoprene | Fibreglass | Black | 1254 | -34 | 85 | 50 |
| # BD-XL-050-095-NF | 50 | 9.53 <i>0.375</i> | 254.00 <i>10.000</i> | Nylon Covered Neoprene | Fibreglass | Black | 1505 | -34 | 85 | 50 |
| # BD-XL-055-063-NF | 55 | 6.35 <i>0.250</i> | 279.40 <i>11.000</i> | Nylon Covered Neoprene | Fibreglass | Black | 1003 | -34 | 85 | 50 |
| # BD-XL-055-079-NF | 55 | 7.94 <i>0.313</i> | 279.40 <i>11.000</i> | Nylon Covered Neoprene | Fibreglass | Black | 1254 | -34 | 85 | 50 |
| # BD-XL-055-095-NF | 55 | 9.53 <i>0.375</i> | 279.40 <i>11.000</i> | Nylon Covered Neoprene | Fibreglass | Black | 1505 | -34 | 85 | 50 |

Indicates item not stocked at time of printing - Please enquire for lead time

E&OE Pricing and all details subject to change without notice - Copyright Miniature Bearings Australia Pty Ltd

MBA Size Listings are a guide to sizes only and must not be solely relied on for critical design information.

Belts - Timing - 5.080mm Pitch - XL Double Sided

| Part Number | Teeth (No.) | Nom. Width (+/-0.2) mm | Length mm | Material | Reinforcement | Appearance | Breaking Strength N | Min Temperature Deg C | Max Temperature Deg C | Tooth Angle (A) Deg. |
|--------------------|-------------|---------------------------|-------------------------|---------------------------|---------------|------------|------------------------|-----------------------------|-----------------------------|-------------------------|
| | | <i>inches</i> | <i>inches</i> | | | | | | | |
| # BD-XL-056-127-NF | 56 | 12.70 <i>0.500</i> | 284.48 <i>11.200</i> | Nylon Covered Neoprene | Fibreglass | Black | 2007 | -34 | 85 | 50 |
| # BD-XL-056-191-NF | 56 | 19.05 <i>0.750</i> | 284.48 <i>11.200</i> | Nylon Covered Neoprene | Fibreglass | Black | 3010 | -34 | 85 | 50 |
| # BD-XL-060-063-NF | 60 | 6.35 <i>0.250</i> | 304.80 <i>12.000</i> | Nylon Covered Neoprene | Fibreglass | Black | 1003 | -34 | 85 | 50 |
| # BD-XL-060-079-NF | 60 | 7.94 <i>0.313</i> | 304.80 <i>12.000</i> | Nylon Covered Neoprene | Fibreglass | Black | 1254 | -34 | 85 | 50 |
| # BD-XL-060-095-NF | 60 | 9.53 <i>0.375</i> | 304.80 <i>12.000</i> | Nylon Covered Neoprene | Fibreglass | Black | 1505 | -34 | 85 | 50 |
| # BD-XL-065-063-NF | 65 | 6.35 <i>0.250</i> | 330.20 <i>13.000</i> | Nylon Covered Neoprene | Fibreglass | Black | 1003 | -34 | 85 | 50 |
| # BD-XL-065-079-NF | 65 | 7.94 <i>0.313</i> | 330.20 <i>13.000</i> | Nylon Covered Neoprene | Fibreglass | Black | 1254 | -34 | 85 | 50 |
| # BD-XL-065-095-NF | 65 | 9.53 <i>0.375</i> | 330.20 <i>13.000</i> | Nylon Covered Neoprene | Fibreglass | Black | 1505 | -34 | 85 | 50 |

Indicates item not stocked at time of printing - Please enquire for lead time

E&OE Pricing and all details subject to change without notice - Copyright Miniature Bearings Australia Pty Ltd

MBA Size Listings are a guide to sizes only and must not be solely relied on for critical design information.

Belts - Timing - 5.080mm Pitch - XL Double Sided

| Part Number | Teeth (No.) | Nom. Width (+/-0.2) mm | Length mm | Material | Reinforcement | Appearance | Breaking Strength N | Min Temperature Deg C | Max Temperature Deg C | Tooth Angle (A) Deg. |
|--------------------|-------------|---------------------------|-------------------------|---------------------------|---------------|------------|------------------------|-----------------------------|-----------------------------|-------------------------|
| | | <i>inches</i> | <i>inches</i> | | | | | | | |
| # BD-XL-070-063-NF | 70 | 6.35 <i>0.250</i> | 355.60 <i>14.000</i> | Nylon Covered Neoprene | Fibreglass | Black | 1003 | -34 | 85 | 50 |
| # BD-XL-070-063-PK | 70 | 6.35 <i>0.250</i> | 355.60 <i>14.000</i> | Polyurethane | Kevlar | Black | 1156 | -18 | 82 | 50 |
| # BD-XL-070-079-NF | 70 | 7.94 <i>0.313</i> | 355.60 <i>14.000</i> | Nylon Covered Neoprene | Fibreglass | Black | 1254 | -34 | 85 | 50 |
| # BD-XL-070-095-PK | 70 | 9.53 <i>0.375</i> | 355.60 <i>14.000</i> | Polyurethane | Kevlar | Black | 1734 | -18 | 82 | 50 |
| # BD-XL-070-095-NF | 70 | 9.53 <i>0.375</i> | 355.60 <i>14.000</i> | Nylon Covered Neoprene | Fibreglass | Black | 1505 | -34 | 85 | 50 |
| # BD-XL-073-063-PK | 73 | 6.35 <i>0.250</i> | 370.84 <i>14.600</i> | Polyurethane | Kevlar | Black | 1156 | -18 | 82 | 50 |
| # BD-XL-073-079-PK | 73 | 7.94 <i>0.313</i> | 370.84 <i>14.600</i> | Polyurethane | Kevlar | Black | 1445 | -18 | 82 | 50 |
| # BD-XL-073-095-PK | 73 | 9.53 <i>0.375</i> | 370.84 <i>14.600</i> | Polyurethane | Kevlar | Black | 1734 | -18 | 82 | 50 |
| # BD-XL-075-063-NF | 75 | 6.35 <i>0.250</i> | 381.00 <i>15.000</i> | Nylon Covered Neoprene | Fibreglass | Black | 1003 | -34 | 85 | 50 |

Indicates item not stocked at time of printing - Please enquire for lead time

E&OE Pricing and all details subject to change without notice - Copyright Miniature Bearings Australia Pty Ltd

MBA Size Listings are a guide to sizes only and must not be solely relied on for critical design information.

Belts - Timing - 5.080mm Pitch - XL Double Sided

| Part Number | Teeth (No.) | Nom. Width (+/-0.2) mm | Length mm | Material | Reinforcement | Appearance | Breaking Strength N | Min Temperature Deg C | Max Temperature Deg C | Tooth Angle (A) Deg. |
|--------------------|-------------|---------------------------|-------------------------|---------------------------|---------------|----------------------|------------------------|-----------------------------|-----------------------------|-------------------------|
| | | <i>inches</i> | <i>inches</i> | | | | | | | |
| # BD-XL-075-063-PK | 75 | 6.35 <i>0.250</i> | 381.00 <i>15.000</i> | Polyurethane | Kevlar | Black | 1156 | -18 | 82 | 50 |
| # BD-XL-075-079-NF | 75 | 7.94 <i>0.313</i> | 381.00 <i>15.000</i> | Nylon Covered Neoprene | Fibreglass | Black | 1254 | -34 | 85 | 50 |
| # BD-XL-075-079-PK | 75 | 7.94 <i>0.313</i> | 381.00 <i>15.000</i> | Polyurethane | Kevlar | Black | 1445 | -18 | 82 | 50 |
| # BD-XL-075-095-NF | 75 | 9.53 <i>0.375</i> | 381.00 <i>15.000</i> | Nylon Covered Neoprene | Fibreglass | Black | 1505 | -34 | 85 | 50 |
| # BD-XL-075-095-PK | 75 | 9.53 <i>0.375</i> | 381.00 <i>15.000</i> | Polyurethane | Kevlar | Black | 1734 | -18 | 82 | 50 |
| # BD-XL-080-063-NF | 80 | 6.35 <i>0.250</i> | 406.40 <i>16.000</i> | Nylon Covered Neoprene | Fibreglass | Black | 1003 | -34 | 85 | 50 |
| # BD-XL-080-063-PK | 80 | 6.35 <i>0.250</i> | 406.40 <i>16.000</i> | Polyurethane | Kevlar | Transparent Amber | 1156 | -18 | 82 | 50 |
| # BD-XL-080-079-PK | 80 | 7.94 <i>0.313</i> | 406.40 <i>16.000</i> | Polyurethane | Kevlar | Transparent Amber | 1445 | -18 | 82 | 50 |
| # BD-XL-080-079-NF | 80 | 7.94 <i>0.313</i> | 406.40 <i>16.000</i> | Nylon Covered Neoprene | Fibreglass | Black | 1254 | -34 | 85 | 50 |

Indicates item not stocked at time of printing - Please enquire for lead time

E&OE Pricing and all details subject to change without notice - Copyright Miniature Bearings Australia Pty Ltd

MBA Size Listings are a guide to sizes only and must not be solely relied on for critical design information.

Belts - Timing - 5.080mm Pitch - XL Double Sided

| Part Number | Teeth (No.) | Nom. Width (+/-0.2) mm | Length mm | Material | Reinforcement | Appearance | Breaking Strength N | Min Temperature Deg C | Max Temperature Deg C | Tooth Angle (A) Deg. |
|--------------------|-------------|---------------------------|-------------------------|---------------------------|---------------|----------------------|------------------------|-----------------------------|-----------------------------|-------------------------|
| | | <i>inches</i> | <i>inches</i> | | | | | | | |
| # BD-XL-080-095-NF | 80 | 9.53 <i>0.375</i> | 406.40 <i>16.000</i> | Nylon Covered Neoprene | Fibreglass | Black | 1505 | -34 | 85 | 50 |
| # BD-XL-080-095-PK | 80 | 9.53 <i>0.375</i> | 406.40 <i>16.000</i> | Polyurethane | Kevlar | Transparent Amber | 1734 | -18 | 82 | 50 |
| # BD-XL-083-063-PK | 83 | 6.35 <i>0.250</i> | 421.64 <i>16.600</i> | Polyurethane | Kevlar | Black | 1156 | -18 | 82 | 50 |
| # BD-XL-083-079-PK | 83 | 7.94 <i>0.313</i> | 421.64 <i>16.600</i> | Polyurethane | Kevlar | Black | 1445 | -18 | 82 | 50 |
| # BD-XL-083-095-PK | 83 | 9.53 <i>0.375</i> | 421.64 <i>16.600</i> | Polyurethane | Kevlar | Black | 1734 | -18 | 82 | 50 |
| # BD-XL-085-063-PK | 85 | 6.35 <i>0.250</i> | 431.80 <i>17.000</i> | Polyurethane | Kevlar | Black | 1156 | -18 | 82 | 50 |
| # BD-XL-085-063-NF | 85 | 6.35 <i>0.250</i> | 431.80 <i>17.000</i> | Nylon Covered Neoprene | Fibreglass | Black | 1003 | -34 | 85 | 50 |
| # BD-XL-085-079-NF | 85 | 7.94 <i>0.313</i> | 431.80 <i>17.000</i> | Nylon Covered Neoprene | Fibreglass | Black | 1254 | -34 | 85 | 50 |
| # BD-XL-085-079-PK | 85 | 7.94 <i>0.313</i> | 431.80 <i>17.000</i> | Polyurethane | Kevlar | Black | 1445 | -18 | 82 | 50 |

Indicates item not stocked at time of printing - Please enquire for lead time

E&OE Pricing and all details subject to change without notice - Copyright Miniature Bearings Australia Pty Ltd

MBA Size Listings are a guide to sizes only and must not be solely relied on for critical design information.

Belts - Timing - 5.080mm Pitch - XL Double Sided

| Part Number | Teeth (No.) | Nom. Width (+/-0.2) mm | Length mm | Material | Reinforcement | Appearance | Breaking Strength N | Min Temperature Deg C | Max Temperature Deg C | Tooth Angle (A) Deg. |
|--------------------|-------------|---------------------------|-------------------------|---------------------------|---------------|----------------------|------------------------|-----------------------------|-----------------------------|-------------------------|
| | | <i>inches</i> | <i>inches</i> | | | | | | | |
| # BD-XL-085-095-PK | 85 | 9.53 <i>0.375</i> | 431.80 <i>17.000</i> | Polyurethane | Kevlar | Black | 1734 | -18 | 82 | 50 |
| # BD-XL-085-095-NF | 85 | 9.53 <i>0.375</i> | 431.80 <i>17.000</i> | Nylon Covered Neoprene | Fibreglass | Black | 1505 | -34 | 85 | 50 |
| # BD-XL-088-063-PK | 88 | 6.35 <i>0.250</i> | 447.04 <i>17.600</i> | Polyurethane | Kevlar | Transparent Amber | 1156 | -18 | 82 | 50 |
| # BD-XL-088-079-PK | 88 | 7.94 <i>0.313</i> | 447.04 <i>17.600</i> | Polyurethane | Kevlar | Transparent Amber | 1445 | -18 | 82 | 50 |
| # BD-XL-088-095-PK | 88 | 9.53 <i>0.375</i> | 447.04 <i>17.600</i> | Polyurethane | Kevlar | Transparent Amber | 1734 | -18 | 82 | 50 |
| # BD-XL-090-063-PK | 90 | 6.35 <i>0.250</i> | 457.20 <i>18.000</i> | Polyurethane | Kevlar | Black | 1156 | -18 | 82 | 50 |
| # BD-XL-090-063-NF | 90 | 6.35 <i>0.250</i> | 457.20 <i>18.000</i> | Nylon Covered Neoprene | Fibreglass | Black | 1003 | -34 | 85 | 50 |
| # BD-XL-090-079-NF | 90 | 7.94 <i>0.313</i> | 457.20 <i>18.000</i> | Nylon Covered Neoprene | Fibreglass | Black | 1254 | -34 | 85 | 50 |
| # BD-XL-090-079-PK | 90 | 7.94 <i>0.313</i> | 457.20 <i>18.000</i> | Polyurethane | Kevlar | Black | 1445 | -18 | 82 | 50 |

Indicates item not stocked at time of printing - Please enquire for lead time

E&OE Pricing and all details subject to change without notice - Copyright Miniature Bearings Australia Pty Ltd

MBA Size Listings are a guide to sizes only and must not be solely relied on for critical design information.

Belts - Timing - 5.080mm Pitch - XL Double Sided

| Part Number | Teeth (No.) | Nom. Width (+/-0.2) mm | Length mm | Material | Reinforcement | Appearance | Breaking Strength N | Min Temperature Deg C | Max Temperature Deg C | Tooth Angle (A) Deg. |
|--------------------|-------------|---------------------------|-------------------------|---------------------------|---------------|----------------------|------------------------|-----------------------------|-----------------------------|-------------------------|
| | | <i>inches</i> | <i>inches</i> | | | | | | | |
| # BD-XL-090-095-NF | 90 | 9.53 <i>0.375</i> | 457.20 <i>18.000</i> | Nylon Covered Neoprene | Fibreglass | Black | 1505 | -34 | 85 | 50 |
| # BD-XL-090-095-PK | 90 | 9.53 <i>0.375</i> | 457.20 <i>18.000</i> | Polyurethane | Kevlar | Black | 1734 | -18 | 82 | 50 |
| # BD-XL-095-063-NF | 95 | 6.35 <i>0.250</i> | 482.60 <i>19.000</i> | Nylon Covered Neoprene | Fibreglass | Black | 1003 | -34 | 85 | 50 |
| # BD-XL-095-063-PK | 95 | 6.35 <i>0.250</i> | 482.60 <i>19.000</i> | Polyurethane | Kevlar | Black | 1156 | -18 | 82 | 50 |
| # BD-XL-095-079-NF | 95 | 7.94 <i>0.313</i> | 482.60 <i>19.000</i> | Nylon Covered Neoprene | Fibreglass | Black | 1254 | -34 | 85 | 50 |
| # BD-XL-095-079-PK | 95 | 7.94 <i>0.313</i> | 482.60 <i>19.000</i> | Polyurethane | Kevlar | Black | 1445 | -18 | 82 | 50 |
| # BD-XL-095-095-NF | 95 | 9.53 <i>0.375</i> | 482.60 <i>19.000</i> | Nylon Covered Neoprene | Fibreglass | Black | 1505 | -34 | 85 | 50 |
| # BD-XL-095-095-PK | 95 | 9.53 <i>0.375</i> | 482.60 <i>19.000</i> | Polyurethane | Kevlar | Black | 1734 | -18 | 82 | 50 |
| # BD-XL-098-063-PK | 98 | 6.35 <i>0.250</i> | 497.84 <i>19.600</i> | Polyurethane | Kevlar | Transparent Amber | 1156 | -18 | 82 | 50 |

Indicates item not stocked at time of printing - Please enquire for lead time

E&OE Pricing and all details subject to change without notice - Copyright Miniature Bearings Australia Pty Ltd

MBA Size Listings are a guide to sizes only and must not be solely relied on for critical design information.

Belts - Timing - 5.080mm Pitch - XL Double Sided

| Part Number | Teeth (No.) | Nom. Width (+/-0.2) mm | Length mm | Material | Reinforcement | Appearance | Breaking Strength N | Min Temperature Deg C | Max Temperature Deg C | Tooth Angle (A) Deg. |
|--------------------|-------------|---------------------------|-------------------------|---------------------------|---------------|----------------------|------------------------|-----------------------------|-----------------------------|-------------------------|
| | | <i>inches</i> | <i>inches</i> | | | | | | | |
| # BD-XL-098-079-PK | 98 | 7.94 <i>0.313</i> | 497.84 <i>19.600</i> | Polyurethane | Kevlar | Transparent Amber | 1445 | -18 | 82 | 50 |
| # BD-XL-098-095-PK | 98 | 9.53 <i>0.375</i> | 497.84 <i>19.600</i> | Polyurethane | Kevlar | Transparent Amber | 1734 | -18 | 82 | 50 |
| # BD-XL-100-063-PK | 100 | 6.35 <i>0.250</i> | 508.00 <i>20.000</i> | Polyurethane | Kevlar | Black | 1156 | -18 | 82 | 50 |
| # BD-XL-100-063-NF | 100 | 6.35 <i>0.250</i> | 508.00 <i>20.000</i> | Nylon Covered Neoprene | Fibreglass | Black | 1003 | -34 | 85 | 50 |
| # BD-XL-100-079-PK | 100 | 7.94 <i>0.313</i> | 508.00 <i>20.000</i> | Polyurethane | Kevlar | Black | 1445 | -18 | 82 | 50 |
| # BD-XL-100-079-NF | 100 | 7.94 <i>0.313</i> | 508.00 <i>20.000</i> | Nylon Covered Neoprene | Fibreglass | Black | 1254 | -34 | 85 | 50 |
| # BD-XL-100-095-NF | 100 | 9.53 <i>0.375</i> | 508.00 <i>20.000</i> | Nylon Covered Neoprene | Fibreglass | Black | 1505 | -34 | 85 | 50 |
| # BD-XL-100-095-PK | 100 | 9.53 <i>0.375</i> | 508.00 <i>20.000</i> | Polyurethane | Kevlar | Black | 1734 | -18 | 82 | 50 |
| # BD-XL-103-063-PK | 103 | 6.35 <i>0.250</i> | 523.24 <i>20.600</i> | Polyurethane | Kevlar | Transparent Amber | 1156 | -18 | 82 | 50 |

Indicates item not stocked at time of printing - Please enquire for lead time

E&OE Pricing and all details subject to change without notice - Copyright Miniature Bearings Australia Pty Ltd

MBA Size Listings are a guide to sizes only and must not be solely relied on for critical design information.

Belts - Timing - 5.080mm Pitch - XL Double Sided

| Part Number | Teeth (No.) | Nom. Width (+/-0.2) mm | Length mm | Material | Reinforcement | Appearance | Breaking Strength N | Min Temperature Deg C | Max Temperature Deg C | Tooth Angle (A) Deg. |
|--------------------|-------------|---------------------------|-------------------------|---------------------------|---------------|----------------------|------------------------|-----------------------------|-----------------------------|-------------------------|
| | | <i>inches</i> | <i>inches</i> | | | | | | | |
| # BD-XL-103-079-PK | 103 | 7.94 <i>0.313</i> | 523.24 <i>20.600</i> | Polyurethane | Kevlar | Transparent Amber | 1445 | -18 | 82 | 50 |
| # BD-XL-103-095-PK | 103 | 9.53 <i>0.375</i> | 523.24 <i>20.600</i> | Polyurethane | Kevlar | Transparent Amber | 1734 | -18 | 82 | 50 |
| # BD-XL-105-063-PK | 105 | 6.35 <i>0.250</i> | 533.40 <i>21.000</i> | Polyurethane | Kevlar | Black | 1156 | -18 | 82 | 50 |
| # BD-XL-105-063-NF | 105 | 6.35 <i>0.250</i> | 533.40 <i>21.000</i> | Nylon Covered Neoprene | Fibreglass | Black | 1003 | -34 | 85 | 50 |
| # BD-XL-105-079-NF | 105 | 7.94 <i>0.313</i> | 533.40 <i>21.000</i> | Nylon Covered Neoprene | Fibreglass | Black | 1254 | -34 | 85 | 50 |
| # BD-XL-105-079-PK | 105 | 7.94 <i>0.313</i> | 533.40 <i>21.000</i> | Polyurethane | Kevlar | Black | 1445 | -18 | 82 | 50 |
| # BD-XL-105-095-NF | 105 | 9.53 <i>0.375</i> | 533.40 <i>21.000</i> | Nylon Covered Neoprene | Fibreglass | Black | 1505 | -34 | 85 | 50 |
| # BD-XL-105-095-PK | 105 | 9.53 <i>0.375</i> | 533.40 <i>21.000</i> | Polyurethane | Kevlar | Black | 1734 | -18 | 82 | 50 |
| # BD-XL-110-063-PK | 110 | 6.35 <i>0.250</i> | 558.80 <i>22.000</i> | Polyurethane | Kevlar | Black | 1156 | -18 | 82 | 50 |

Indicates item not stocked at time of printing - Please enquire for lead time

E&OE Pricing and all details subject to change without notice - Copyright Miniature Bearings Australia Pty Ltd

MBA Size Listings are a guide to sizes only and must not be solely relied on for critical design information.

Belts - Timing - 5.080mm Pitch - XL Double Sided

| Part Number | Teeth (No.) | Nom. Width (+/-0.2) mm | Length mm | Material | Reinforcement | Appearance | Breaking Strength N | Min Temperature Deg C | Max Temperature Deg C | Tooth Angle (A) Deg. |
|--------------------|-------------|---------------------------|-------------------------|---------------------------|---------------|------------|------------------------|-----------------------------|-----------------------------|-------------------------|
| | | <i>inches</i> | <i>inches</i> | | | | | | | |
| # BD-XL-110-063-NF | 110 | 6.35 <i>0.250</i> | 558.80 <i>22.000</i> | Nylon Covered Neoprene | Fibreglass | Black | 1003 | -34 | 85 | 50 |
| # BD-XL-110-079-PK | 110 | 7.94 <i>0.313</i> | 558.80 <i>22.000</i> | Polyurethane | Kevlar | Black | 1445 | -18 | 82 | 50 |
| # BD-XL-110-079-NF | 110 | 7.94 <i>0.313</i> | 558.80 <i>22.000</i> | Nylon Covered Neoprene | Fibreglass | Black | 1254 | -34 | 85 | 50 |
| # BD-XL-110-095-NF | 110 | 9.53 <i>0.375</i> | 558.80 <i>22.000</i> | Nylon Covered Neoprene | Fibreglass | Black | 1505 | -34 | 85 | 50 |
| # BD-XL-110-095-PK | 110 | 9.53 <i>0.375</i> | 558.80 <i>22.000</i> | Polyurethane | Kevlar | Black | 1734 | -18 | 82 | 50 |
| # BD-XL-115-063-PK | 115 | 6.35 <i>0.250</i> | 584.20 <i>23.000</i> | Polyurethane | Kevlar | Black | 1156 | -18 | 82 | 50 |
| # BD-XL-115-063-NF | 115 | 6.35 <i>0.250</i> | 584.20 <i>23.000</i> | Nylon Covered Neoprene | Fibreglass | Black | 1003 | -34 | 85 | 50 |
| # BD-XL-115-079-PK | 115 | 7.94 <i>0.313</i> | 584.20 <i>23.000</i> | Polyurethane | Kevlar | Black | 1445 | -18 | 82 | 50 |
| # BD-XL-115-079-NF | 115 | 7.94 <i>0.313</i> | 584.20 <i>23.000</i> | Nylon Covered Neoprene | Fibreglass | Black | 1254 | -34 | 85 | 50 |

Indicates item not stocked at time of printing - Please enquire for lead time

E&OE Pricing and all details subject to change without notice - Copyright Miniature Bearings Australia Pty Ltd

MBA Size Listings are a guide to sizes only and must not be solely relied on for critical design information.

Belts - Timing - 5.080mm Pitch - XL Double Sided

| Part Number | Teeth (No.) | Nom. Width (+/-0.2) mm | Length mm | Material | Reinforcement | Appearance | Breaking Strength N | Min Temperature Deg C | Max Temperature Deg C | Tooth Angle (A) Deg. |
|--------------------|-------------|---------------------------|-------------------------|---------------------------|---------------|----------------------|------------------------|-----------------------------|-----------------------------|-------------------------|
| | | <i>inches</i> | <i>inches</i> | | | | | | | |
| # BD-XL-115-095-PK | 115 | 9.53 <i>0.375</i> | 584.20 <i>23.000</i> | Polyurethane | Kevlar | Black | 1734 | -18 | 82 | 50 |
| # BD-XL-115-191-NF | 115 | 19.05 <i>0.750</i> | 584.20 <i>23.000</i> | Nylon Covered Neoprene | Fibreglass | Black | | -34 | 85 | |
| # BD-XL-117-063-PK | 117 | 6.35 <i>0.250</i> | 594.36 <i>23.400</i> | Polyurethane | Kevlar | Transparent Amber | 1156 | -18 | 82 | 50 |
| # BD-XL-117-079-PK | 117 | 7.94 <i>0.313</i> | 594.36 <i>23.400</i> | Polyurethane | Kevlar | Transparent Amber | 1445 | -18 | 82 | 50 |
| # BD-XL-117-095-PK | 117 | 9.53 <i>0.375</i> | 594.36 <i>23.400</i> | Polyurethane | Kevlar | Transparent Amber | 1734 | -18 | 82 | 50 |
| # BD-XL-120-063-NF | 120 | 6.35 <i>0.250</i> | 609.60 <i>24.000</i> | Nylon Covered Neoprene | Fibreglass | Black | 1003 | -34 | 85 | 50 |
| # BD-XL-120-063-PK | 120 | 6.35 <i>0.250</i> | 609.60 <i>24.000</i> | Polyurethane | Kevlar | Black | 1156 | -18 | 82 | 50 |
| # BD-XL-120-079-NF | 120 | 7.94 <i>0.313</i> | 609.60 <i>24.000</i> | Nylon Covered Neoprene | Fibreglass | Black | 1254 | -34 | 85 | 50 |
| # BD-XL-120-079-PK | 120 | 7.94 <i>0.313</i> | 609.60 <i>24.000</i> | Polyurethane | Kevlar | Black | 1445 | -18 | 82 | 50 |

Indicates item not stocked at time of printing - Please enquire for lead time

E&OE Pricing and all details subject to change without notice - Copyright Miniature Bearings Australia Pty Ltd

MBA Size Listings are a guide to sizes only and must not be solely relied on for critical design information.

Belts - Timing - 5.080mm Pitch - XL Double Sided

| Part Number | Teeth (No.) | Nom. Width (+/-0.2) mm | Length mm | Material | Reinforcement | Appearance | Breaking Strength N | Min Temperature Deg C | Max Temperature Deg C | Tooth Angle (A) Deg. |
|--------------------|-------------|---------------------------|-------------------------|---------------------------|---------------|----------------------|------------------------|-----------------------------|-----------------------------|-------------------------|
| | | <i>inches</i> | <i>inches</i> | | | | | | | |
| # BD-XL-120-095-PK | 120 | 9.53 <i>0.375</i> | 609.60 <i>24.000</i> | Polyurethane | Kevlar | Black | 1734 | -18 | 82 | 50 |
| # BD-XL-120-095-NF | 120 | 9.53 <i>0.375</i> | 609.60 <i>24.000</i> | Nylon Covered Neoprene | Fibreglass | Black | 1505 | -34 | 85 | 50 |
| # BD-XL-125-063-PK | 125 | 6.35 <i>0.250</i> | 635.00 <i>25.000</i> | Polyurethane | Kevlar | Transparent Amber | 1156 | -18 | 82 | 50 |
| # BD-XL-125-063-NF | 125 | 6.35 <i>0.250</i> | 635.00 <i>25.000</i> | Nylon Covered Neoprene | Fibreglass | Black | 1003 | -34 | 85 | 50 |
| # BD-XL-125-079-PK | 125 | 7.94 <i>0.313</i> | 635.00 <i>25.000</i> | Polyurethane | Kevlar | Transparent Amber | 1445 | -18 | 82 | 50 |
| # BD-XL-125-079-NF | 125 | 7.94 <i>0.313</i> | 635.00 <i>25.000</i> | Nylon Covered Neoprene | Fibreglass | Black | 1254 | -34 | 85 | 50 |
| # BD-XL-125-095-PK | 125 | 9.53 <i>0.375</i> | 635.00 <i>25.000</i> | Polyurethane | Kevlar | Transparent Amber | 1734 | -18 | 82 | 50 |
| # BD-XL-125-095-NF | 125 | 9.53 <i>0.375</i> | 635.00 <i>25.000</i> | Nylon Covered Neoprene | Fibreglass | Black | 1505 | -34 | 85 | 50 |

Indicates item not stocked at time of printing - Please enquire for lead time

E&OE Pricing and all details subject to change without notice - Copyright Miniature Bearings Australia Pty Ltd

MBA Size Listings are a guide to sizes only and must not be solely relied on for critical design information.

Belts - Timing - 5.080mm Pitch - XL Double Sided

| Part Number | Teeth (No.) | Nom. Width (+/-0.2) mm | Length mm | Material | Reinforcement | Appearance | Breaking Strength N | Min Temperature Deg C | Max Temperature Deg C | Tooth Angle (A) Deg. |
|--------------------|-------------|---------------------------|-------------------------|---------------------------|---------------|----------------------|------------------------|-----------------------------|-----------------------------|-------------------------|
| | | <i>inches</i> | <i>inches</i> | | | | | | | |
| # BD-XL-130-063-NF | 130 | 6.35 <i>0.250</i> | 660.40 <i>26.000</i> | Nylon Covered Neoprene | Fibreglass | Black | 1003 | -34 | 85 | 50 |
| # BD-XL-130-063-PK | 130 | 6.35 <i>0.250</i> | 660.40 <i>26.000</i> | Polyurethane | Kevlar | Transparent Amber | 1156 | -18 | 82 | 50 |
| # BD-XL-130-079-PK | 130 | 7.94 <i>0.313</i> | 660.40 <i>26.000</i> | Polyurethane | Kevlar | Transparent Amber | 1445 | -18 | 82 | 50 |
| # BD-XL-130-079-NF | 130 | 7.94 <i>0.313</i> | 660.40 <i>26.000</i> | Nylon Covered Neoprene | Fibreglass | Black | 1254 | -34 | 85 | 50 |
| # BD-XL-130-095-PK | 130 | 9.53 <i>0.375</i> | 660.40 <i>26.000</i> | Polyurethane | Kevlar | Transparent Amber | 1734 | -18 | 82 | 50 |
| # BD-XL-130-095-NF | 130 | 9.53 <i>0.375</i> | 660.40 <i>26.000</i> | Nylon Covered Neoprene | Fibreglass | Black | 1505 | -34 | 85 | 50 |
| # BD-XL-135-063-PK | 135 | 6.35 <i>0.250</i> | 685.80 <i>27.000</i> | Polyurethane | Kevlar | Black | 1156 | -18 | 82 | 50 |
| # BD-XL-135-079-PK | 135 | 7.94 <i>0.313</i> | 685.80 <i>27.000</i> | Polyurethane | Kevlar | Black | 1445 | -18 | 82 | 50 |
| # BD-XL-135-095-PK | 135 | 9.53 <i>0.375</i> | 685.80 <i>27.000</i> | Polyurethane | Kevlar | Black | 1734 | -18 | 82 | 50 |

Indicates item not stocked at time of printing - Please enquire for lead time

E&OE Pricing and all details subject to change without notice - Copyright Miniature Bearings Australia Pty Ltd

MBA Size Listings are a guide to sizes only and must not be solely relied on for critical design information.

Belts - Timing - 5.080mm Pitch - XL Double Sided

| Part Number | Teeth (No.) | Nom. Width (+/-0.2) mm | Length mm | Material | Reinforcement | Appearance | Breaking Strength N | Min Temperature Deg C | Max Temperature Deg C | Tooth Angle (A) Deg. |
|--------------------|-------------|---------------------------|-------------------------|---------------------------|---------------|----------------------|------------------------|-----------------------------|-----------------------------|-------------------------|
| | | <i>inches</i> | <i>inches</i> | | | | | | | |
| # BD-XL-140-063-NF | 140 | 6.35 <i>0.250</i> | 711.20 <i>28.000</i> | Nylon Covered Neoprene | Fibreglass | Black | 1003 | -34 | 85 | 50 |
| # BD-XL-140-063-PK | 140 | 6.35 <i>0.250</i> | 711.20 <i>28.000</i> | Polyurethane | Kevlar | Transparent Amber | 1156 | -18 | 82 | 50 |
| # BD-XL-140-079-PK | 140 | 7.94 <i>0.313</i> | 711.20 <i>28.000</i> | Polyurethane | Kevlar | Transparent Amber | 1445 | -18 | 82 | 50 |
| # BD-XL-140-079-NF | 140 | 7.94 <i>0.313</i> | 711.20 <i>28.000</i> | Nylon Covered Neoprene | Fibreglass | Black | 1254 | -34 | 85 | 50 |
| # BD-XL-140-095-PK | 140 | 9.53 <i>0.375</i> | 711.20 <i>28.000</i> | Polyurethane | Kevlar | Transparent Amber | 1734 | -18 | 82 | 50 |
| # BD-XL-140-095-NF | 140 | 9.53 <i>0.375</i> | 711.20 <i>28.000</i> | Nylon Covered Neoprene | Fibreglass | Black | 1505 | -34 | 85 | 50 |
| # BD-XL-145-063-PK | 145 | 6.35 <i>0.250</i> | 736.60 <i>29.000</i> | Polyurethane | Kevlar | Black | 1156 | -18 | 82 | 50 |
| # BD-XL-145-063-NF | 145 | 6.35 <i>0.250</i> | 736.60 <i>29.000</i> | Nylon Covered Neoprene | Fibreglass | Black | 1003 | -34 | 85 | 50 |

Indicates item not stocked at time of printing - Please enquire for lead time

E&OE Pricing and all details subject to change without notice - Copyright Miniature Bearings Australia Pty Ltd

MBA Size Listings are a guide to sizes only and must not be solely relied on for critical design information.

Belts - Timing - 5.080mm Pitch - XL Double Sided

| Part Number | Teeth (No.) | Nom. Width (+/-0.2) mm | Length mm | Material | Reinforcement | Appearance | Breaking Strength N | Min Temperature Deg C | Max Temperature Deg C | Tooth Angle (A) Deg. |
|--------------------|-------------|---------------------------|-------------------------|---------------------------|---------------|----------------------|------------------------|-----------------------------|-----------------------------|-------------------------|
| | | <i>inches</i> | <i>inches</i> | | | | | | | |
| # BD-XL-145-079-NF | 145 | 7.94 <i>0.313</i> | 736.60 <i>29.000</i> | Nylon Covered Neoprene | Fibreglass | Black | 1254 | -34 | 85 | 50 |
| # BD-XL-145-079-PK | 145 | 7.94 <i>0.313</i> | 736.60 <i>29.000</i> | Polyurethane | Kevlar | Black | 1445 | -18 | 82 | 50 |
| # BD-XL-145-095-NF | 145 | 9.53 <i>0.375</i> | 736.60 <i>29.000</i> | Nylon Covered Neoprene | Fibreglass | Black | 1505 | -34 | 85 | 50 |
| # BD-XL-145-095-PK | 145 | 9.53 <i>0.375</i> | 736.60 <i>29.000</i> | Polyurethane | Kevlar | Black | 1734 | -18 | 82 | 50 |
| # BD-XL-150-063-NF | 150 | 6.35 <i>0.250</i> | 762.00 <i>30.000</i> | Nylon Covered Neoprene | Fibreglass | Black | 1003 | -34 | 85 | 50 |
| # BD-XL-150-063-PK | 150 | 6.35 <i>0.250</i> | 762.00 <i>30.000</i> | Polyurethane | Kevlar | Transparent Amber | 1156 | -18 | 82 | 50 |
| # BD-XL-150-079-PK | 150 | 7.94 <i>0.313</i> | 762.00 <i>30.000</i> | Polyurethane | Kevlar | Transparent Amber | 1445 | -18 | 82 | 50 |
| # BD-XL-150-079-NF | 150 | 7.94 <i>0.313</i> | 762.00 <i>30.000</i> | Nylon Covered Neoprene | Fibreglass | Black | 1254 | -34 | 85 | 50 |
| # BD-XL-150-095-PK | 150 | 9.53 <i>0.375</i> | 762.00 <i>30.000</i> | Polyurethane | Kevlar | Transparent Amber | 1734 | -18 | 82 | 50 |

Indicates item not stocked at time of printing - Please enquire for lead time

E&OE Pricing and all details subject to change without notice - Copyright Miniature Bearings Australia Pty Ltd

MBA Size Listings are a guide to sizes only and must not be solely relied on for critical design information.

Belts - Timing - 5.080mm Pitch - XL Double Sided

| Part Number | Teeth (No.) | Nom. Width (+/-0.2) mm | Length mm | Material | Reinforcement | Appearance | Breaking Strength N | Min Temperature Deg C | Max Temperature Deg C | Tooth Angle (A) Deg. |
|--------------------|-------------|---------------------------|-------------------------|---------------------------|---------------|------------|------------------------|-----------------------------|-----------------------------|-------------------------|
| | | <i>inches</i> | <i>inches</i> | | | | | | | |
| # BD-XL-150-095-NF | 150 | 9.53 <i>0.375</i> | 762.00 <i>30.000</i> | Nylon Covered Neoprene | Fibreglass | Black | 1505 | -34 | 85 | 50 |
| # BD-XL-155-063-NF | 155 | 6.35 <i>0.250</i> | 787.40 <i>31.000</i> | Nylon Covered Neoprene | Fibreglass | Black | 1003 | -34 | 85 | 50 |
| # BD-XL-155-079-NF | 155 | 7.94 <i>0.313</i> | 787.40 <i>31.000</i> | Nylon Covered Neoprene | Fibreglass | Black | 1254 | -34 | 85 | 50 |
| # BD-XL-155-095-NF | 155 | 9.53 <i>0.375</i> | 787.40 <i>31.000</i> | Nylon Covered Neoprene | Fibreglass | Black | 1505 | -34 | 85 | 50 |
| # BD-XL-160-063-PK | 160 | 6.35 <i>0.250</i> | 812.80 <i>32.000</i> | Polyurethane | Kevlar | Black | 1156 | -18 | 82 | 50 |
| # BD-XL-160-079-PK | 160 | 7.94 <i>0.313</i> | 812.80 <i>32.000</i> | Polyurethane | Kevlar | Black | 1445 | -18 | 82 | 50 |
| # BD-XL-160-095-PK | 160 | 9.53 <i>0.375</i> | 812.80 <i>32.000</i> | Polyurethane | Kevlar | Black | 1734 | -18 | 82 | 50 |
| # BD-XL-165-063-NF | 165 | 6.35 <i>0.250</i> | 838.20 <i>33.000</i> | Nylon Covered Neoprene | Fibreglass | Black | 1003 | -34 | 85 | 50 |
| # BD-XL-165-079-NF | 165 | 7.94 <i>0.313</i> | 838.20 <i>33.000</i> | Nylon Covered Neoprene | Fibreglass | Black | 1254 | -34 | 85 | 50 |

Indicates item not stocked at time of printing - Please enquire for lead time

E&OE Pricing and all details subject to change without notice - Copyright Miniature Bearings Australia Pty Ltd

MBA Size Listings are a guide to sizes only and must not be solely relied on for critical design information.

Belts - Timing - 5.080mm Pitch - XL Double Sided

| Part Number | Teeth (No.) | Nom. Width (+/-0.2) mm | Length mm | Material | Reinforcement | Appearance | Breaking Strength N | Min Temperature Deg C | Max Temperature Deg C | Tooth Angle (A) Deg. |
|--------------------|-------------|---------------------------|-------------------------|---------------------------|---------------|----------------------|------------------------|-----------------------------|-----------------------------|-------------------------|
| | | <i>inches</i> | <i>inches</i> | | | | | | | |
| # BD-XL-165-095-NF | 165 | 9.53 <i>0.375</i> | 838.20 <i>33.000</i> | Nylon Covered Neoprene | Fibreglass | Black | 1505 | -34 | 85 | 50 |
| # BD-XL-170-063-PK | 170 | 6.35 <i>0.250</i> | 863.60 <i>34.000</i> | Polyurethane | Kevlar | Transparent Amber | 1156 | -18 | 82 | 50 |
| # BD-XL-170-079-PK | 170 | 7.94 <i>0.313</i> | 863.60 <i>34.000</i> | Polyurethane | Kevlar | Transparent Amber | 1445 | -18 | 82 | 50 |
| # BD-XL-170-095-PK | 170 | 9.53 <i>0.375</i> | 863.60 <i>34.000</i> | Polyurethane | Kevlar | Transparent Amber | 1734 | -18 | 82 | 50 |
| # BD-XL-180-063-PK | 180 | 6.35 <i>0.250</i> | 914.40 <i>36.000</i> | Polyurethane | Kevlar | Transparent Amber | 1156 | -18 | 82 | 50 |
| # BD-XL-180-079-PK | 180 | 7.94 <i>0.313</i> | 914.40 <i>36.000</i> | Polyurethane | Kevlar | Transparent Amber | 1445 | -18 | 82 | 50 |
| # BD-XL-180-095-PK | 180 | 9.53 <i>0.375</i> | 914.40 <i>36.000</i> | Polyurethane | Kevlar | Transparent Amber | 1734 | -18 | 82 | 50 |
| # BD-XL-181-063-NF | 181 | 6.35 <i>0.250</i> | 919.48 <i>36.200</i> | Nylon Covered Neoprene | Fibreglass | Black | 1003 | -34 | 85 | 50 |

Indicates item not stocked at time of printing - Please enquire for lead time

E&OE Pricing and all details subject to change without notice - Copyright Miniature Bearings Australia Pty Ltd

MBA Size Listings are a guide to sizes only and must not be solely relied on for critical design information.

Belts - Timing - 5.080mm Pitch - XL Double Sided

| Part Number | Teeth (No.) | Nom. Width (+/-0.2) mm | Length mm | Material | Reinforcement | Appearance | Breaking Strength N | Min Temperature Deg C | Max Temperature Deg C | Tooth Angle (A) Deg. |
|--------------------|-------------|---------------------------|-------------------------|---------------------------|---------------|------------|------------------------|-----------------------------|-----------------------------|-------------------------|
| | | <i>inches</i> | <i>inches</i> | | | | | | | |
| # BD-XL-181-079-NF | 181 | 7.94 <i>0.313</i> | 919.48 <i>36.200</i> | Nylon Covered Neoprene | Fibreglass | Black | 1254 | -34 | 85 | 50 |
| # BD-XL-181-095-NF | 181 | 9.53 <i>0.375</i> | 919.48 <i>36.200</i> | Nylon Covered Neoprene | Fibreglass | Black | 1505 | -34 | 85 | 50 |
| # BD-XL-188-063-PK | 188 | 6.35 <i>0.250</i> | 955.04 <i>37.600</i> | Polyurethane | Kevlar | Black | 1156 | -18 | 82 | 50 |
| # BD-XL-188-079-PK | 188 | 7.94 <i>0.313</i> | 955.04 <i>37.600</i> | Polyurethane | Kevlar | Black | 1445 | -18 | 82 | 50 |
| # BD-XL-188-095-PK | 188 | 9.53 <i>0.375</i> | 955.04 <i>37.600</i> | Polyurethane | Kevlar | Black | 1734 | -18 | 82 | 50 |
| # BD-XL-195-060-NF | 195 | 6.00 <i>0.236</i> | 990.60 <i>39.000</i> | Nylon Covered Neoprene | Fibreglass | Black | 948 | -18 | 82 | 50 |
| # BD-XL-195-080-NF | 195 | 8.00 <i>0.315</i> | 990.60 <i>39.000</i> | Nylon Covered Neoprene | Fibreglass | Black | 1264 | -18 | 82 | 50 |
| # BD-XL-195-095-NF | 195 | 9.50 <i>0.374</i> | 990.60 <i>39.000</i> | Nylon Covered Neoprene | Fibreglass | Black | 1501 | -18 | 82 | 50 |
| # BD-XL-196-063-NF | 196 | 6.35 <i>0.250</i> | 995.68 <i>39.200</i> | Nylon Covered Neoprene | Fibreglass | Black | 1003 | -34 | 85 | 50 |

Indicates item not stocked at time of printing - Please enquire for lead time

E&OE Pricing and all details subject to change without notice - Copyright Miniature Bearings Australia Pty Ltd

MBA Size Listings are a guide to sizes only and must not be solely relied on for critical design information.

Belts - Timing - 5.080mm Pitch - XL Double Sided

| Part Number | Teeth (No.) | Nom. Width (+/-0.2) mm | Length mm | Material | Reinforcement | Appearance | Breaking Strength N | Min Temperature Deg C | Max Temperature Deg C | Tooth Angle (A) Deg. |
|--------------------|-------------|---------------------------|--------------------------|---------------------------|---------------|------------|------------------------|-----------------------------|-----------------------------|-------------------------|
| | | <i>inches</i> | <i>inches</i> | | | | | | | |
| # BD-XL-196-079-NF | 196 | 7.94 <i>0.313</i> | 995.68 <i>39.200</i> | Nylon Covered Neoprene | Fibreglass | Black | 1254 | -34 | 85 | 50 |
| # BD-XL-196-095-NF | 196 | 9.53 <i>0.375</i> | 995.68 <i>39.200</i> | Nylon Covered Neoprene | Fibreglass | Black | 1505 | -34 | 85 | 50 |
| # BD-XL-200-063-PK | 200 | 6.35 <i>0.250</i> | 1016.00 <i>40.000</i> | Polyurethane | Kevlar | Black | 1156 | -18 | 82 | 50 |
| # BD-XL-200-079-PK | 200 | 7.94 <i>0.313</i> | 1016.00 <i>40.000</i> | Polyurethane | Kevlar | Black | 1445 | -18 | 82 | 50 |
| # BD-XL-200-095-PK | 200 | 9.53 <i>0.375</i> | 1016.00 <i>40.000</i> | Polyurethane | Kevlar | Black | 1734 | -18 | 82 | 50 |
| # BD-XL-215-063-PK | 215 | 6.35 <i>0.250</i> | 1092.20 <i>43.000</i> | Polyurethane | Kevlar | Black | 1156 | -18 | 82 | 50 |
| # BD-XL-215-079-PK | 215 | 7.94 <i>0.313</i> | 1092.20 <i>43.000</i> | Polyurethane | Kevlar | Black | 1445 | -18 | 82 | 50 |
| # BD-XL-215-095-PK | 215 | 9.53 <i>0.375</i> | 1092.20 <i>43.000</i> | Polyurethane | Kevlar | Black | 1734 | -18 | 82 | 50 |
| # BD-XL-225-063-NF | 225 | 6.35 <i>0.250</i> | 1143.00 <i>45.000</i> | Nylon Covered Neoprene | Fibreglass | Black | 1003 | -34 | 85 | 50 |

Indicates item not stocked at time of printing - Please enquire for lead time

E&OE Pricing and all details subject to change without notice - Copyright Miniature Bearings Australia Pty Ltd

MBA Size Listings are a guide to sizes only and must not be solely relied on for critical design information.

Belts - Timing - 5.080mm Pitch - XL Double Sided

| Part Number | Teeth (No.) | Nom. Width (+/-0.2) mm | Length mm | Material | Reinforcement | Appearance | Breaking Strength N | Min Temperature Deg C | Max Temperature Deg C | Tooth Angle (A) Deg. |
|--------------------|-------------|---------------------------|--------------------------|---------------------------|---------------|----------------------|------------------------|-----------------------------|-----------------------------|-------------------------|
| | | <i>inches</i> | <i>inches</i> | | | | | | | |
| # BD-XL-225-079-NF | 225 | 7.94 <i>0.313</i> | 1143.00 <i>45.000</i> | Nylon Covered Neoprene | Fibreglass | Black | 1254 | -34 | 85 | 50 |
| # BD-XL-225-095-NF | 225 | 9.53 <i>0.375</i> | 1143.00 <i>45.000</i> | Nylon Covered Neoprene | Fibreglass | Black | 1505 | -34 | 85 | 50 |
| # BD-XL-230-063-PK | 230 | 6.35 <i>0.250</i> | 1168.40 <i>46.000</i> | Polyurethane | Kevlar | Transparent Amber | 1156 | -18 | 82 | 50 |
| # BD-XL-230-079-PK | 230 | 7.94 <i>0.313</i> | 1168.40 <i>46.000</i> | Polyurethane | Kevlar | Transparent Amber | 1445 | -18 | 82 | 50 |
| # BD-XL-230-095-PK | 230 | 9.53 <i>0.375</i> | 1168.40 <i>46.000</i> | Polyurethane | Kevlar | Transparent Amber | 1734 | -18 | 82 | 50 |
| # BD-XL-245-063-PK | 245 | 6.35 <i>0.250</i> | 1244.60 <i>49.000</i> | Polyurethane | Kevlar | Black | 1156 | -18 | 82 | 50 |
| # BD-XL-245-079-PK | 245 | 7.94 <i>0.313</i> | 1244.60 <i>49.000</i> | Polyurethane | Kevlar | Black | 1445 | -18 | 82 | 50 |
| # BD-XL-245-095-PK | 245 | 9.53 <i>0.375</i> | 1244.60 <i>49.000</i> | Polyurethane | Kevlar | Black | 1734 | -18 | 82 | 50 |
| # BD-XL-246-063-NF | 246 | 6.35 <i>0.250</i> | 1249.68 <i>49.200</i> | Nylon Covered Neoprene | Fibreglass | Black | 1003 | -34 | 85 | 50 |

Indicates item not stocked at time of printing - Please enquire for lead time

E&OE Pricing and all details subject to change without notice - Copyright Miniature Bearings Australia Pty Ltd

MBA Size Listings are a guide to sizes only and must not be solely relied on for critical design information.

Belts - Timing - 5.080mm Pitch - XL Double Sided

| Part Number | Teeth (No.) | Nom. Width (+/-0.2) mm | Length mm | Material | Reinforcement | Appearance | Breaking Strength N | Min Temperature Deg C | Max Temperature Deg C | Tooth Angle (A) Deg. |
|--------------------|-------------|---------------------------|--------------------------|---------------------------|---------------|------------|------------------------|-----------------------------|-----------------------------|-------------------------|
| | | <i>inches</i> | <i>inches</i> | | | | | | | |
| # BD-XL-246-079-NF | 246 | 7.94 <i>0.313</i> | 1249.68 <i>49.200</i> | Nylon Covered Neoprene | Fibreglass | Black | 1254 | -34 | 85 | 50 |
| # BD-XL-246-095-NF | 246 | 9.53 <i>0.375</i> | 1249.68 <i>49.200</i> | Nylon Covered Neoprene | Fibreglass | Black | 1505 | -34 | 85 | 50 |
| # BD-XL-345-063-NF | 345 | 6.35 <i>0.250</i> | 1752.60 <i>69.000</i> | Nylon Covered Neoprene | Fibreglass | Black | 1003 | -34 | 85 | 50 |
| # BD-XL-345-079-NF | 345 | 7.94 <i>0.313</i> | 1752.60 <i>69.000</i> | Nylon Covered Neoprene | Fibreglass | Black | 1254 | -34 | 85 | 50 |
| # BD-XL-345-095-NF | 345 | 9.53 <i>0.375</i> | 1752.60 <i>69.000</i> | Nylon Covered Neoprene | Fibreglass | Black | 1505 | -34 | 85 | 50 |
| # BD-XL-450-063-NF | 450 | 6.35 <i>0.250</i> | 2286.00 <i>90.000</i> | Nylon Covered Neoprene | Fibreglass | Black | 1003 | -34 | 85 | 50 |
| # BD-XL-450-079-NF | 450 | 7.94 <i>0.313</i> | 2286.00 <i>90.000</i> | Nylon Covered Neoprene | Fibreglass | Black | 1254 | -34 | 85 | 50 |
| # BD-XL-450-095-NF | 450 | 9.53 <i>0.375</i> | 2286.00 <i>90.000</i> | Nylon Covered Neoprene | Fibreglass | Black | 1505 | -34 | 85 | 50 |

Indicates item not stocked at time of printing - Please enquire for lead time

E&OE Pricing and all details subject to change without notice - Copyright Miniature Bearings Australia Pty Ltd

MBA Size Listings are a guide to sizes only and must not be solely relied on for critical design information.



DISTRIBUTED BY

Ask us to put your name and address here

<http://www.minibearings.com.au/product>

Ph +61 7 3245 7977

Fax +61 7 3245 1017

Catalogue requests to catalogues@minibearings.com.au

