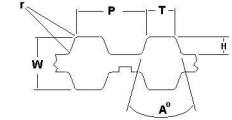




MBA

Belts - Timing - 9.525mm Pitch - L Double Sided



Standard Series Timing Belts 9.525mm or 0.375 inch pitch - Double Sided.

Pitch (P) - 9.525mm (0.200 inch).

Tooth Length (T) - 3.25mm.

Tooth Height (H) - 1.90mm.

Belt Height (W) - 4.60mm - Corner Radii (r) - 0.50mm.

Breaking strength is not indicative of working strength.

Belts - Timing - 9.525mm Pitch - L Double Sided

Part Number	Teeth (No.)	Nom. Width (+/-0.2) mm	Length mm	Material	Reinforcement	Appearance	Breaking Strength N	Min Temperature Deg C	Max Temperature Deg C	Tooth Angle (A) Deg.
		<i>inches</i>	<i>inches</i>							
# BD-L9-033-127-NF	33	12.70	314.33	Nylon Covered Neoprene	Fibreglass	Black	2222	-34	85	40
		<i>0.500</i>	<i>12.375</i>							
# BD-L9-033-191-NF	33	19.05	314.33	Nylon Covered Neoprene	Fibreglass	Black	3334	-34	85	40
		<i>0.750</i>	<i>12.375</i>							

Indicates item not stocked at time of printing - Please enquire for lead time

E&OE Pricing and all details subject to change without notice - Copyright Miniature Bearings Australia Pty Ltd

MBA Size Listings are a guide to sizes only and must not be solely relied on for critical design information.

Belts - Timing - 9.525mm Pitch - L Double Sided

Part Number	Teeth (No.)	Nom. Width (+/-0.2) mm	Length mm	Material	Reinforcement	Appearance	Breaking Strength N	Min Temperature Deg C	Max Temperature Deg C	Tooth Angle (A) Deg.
		<i>inches</i>	<i>inches</i>							
# BD-L9-040-127-NF	40	12.70 <i>0.500</i>	381.00 <i>15.000</i>	Nylon Covered Neoprene	Fibreglass	Black	2222	-34	85	40
# BD-L9-040-191-NF	40	19.05 <i>0.750</i>	381.00 <i>15.000</i>	Nylon Covered Neoprene	Fibreglass	Black	3334	-34	85	40
# BD-L9-050-127-NF	50	12.70 <i>0.500</i>	476.25 <i>18.750</i>	Nylon Covered Neoprene	Fibreglass	Black	2222	-34	85	40
# BD-L9-050-191-NF	50	19.05 <i>0.750</i>	476.25 <i>18.750</i>	Nylon Covered Neoprene	Fibreglass	Black	3334	-34	85	40
# BD-L9-056-191-NF	56	19.00 <i>0.748</i>	533.40 <i>21.000</i>	Nylon Covered Neoprene	Fibreglass	Black	3325	-34	85	40
# BD-L9-060-127-NF	60	12.70 <i>0.500</i>	571.50 <i>22.500</i>	Nylon Covered Neoprene	Fibreglass	Black	2222	-34	85	40
# BD-L9-060-191-NF	60	19.05 <i>0.750</i>	571.50 <i>22.500</i>	Nylon Covered Neoprene	Fibreglass	Black	3334	-34	85	40
# BD-L9-064-127-NF	64	12.70 <i>0.500</i>	609.60 <i>24.000</i>	Nylon Covered Neoprene	Fibreglass	Black	2222	-34	85	40

Indicates item not stocked at time of printing - Please enquire for lead time

E&OE Pricing and all details subject to change without notice - Copyright Miniature Bearings Australia Pty Ltd

MBA Size Listings are a guide to sizes only and must not be solely relied on for critical design information.

Belts - Timing - 9.525mm Pitch - L Double Sided

Part Number	Teeth (No.)	Nom. Width (+/-0.2) mm	Length mm	Material	Reinforcement	Appearance	Breaking Strength N	Min Temperature Deg C	Max Temperature Deg C	Tooth Angle (A) Deg.
		<i>inches</i>	<i>inches</i>							
# BD-L9-064-191-NF	64	19.05 <i>0.750</i>	609.60 <i>24.000</i>	Nylon Covered Neoprene	Fibreglass	Black	3334	-34	85	40
# BD-L9-068-127-NF	68	12.70 <i>0.500</i>	647.70 <i>25.500</i>	Nylon Covered Neoprene	Fibreglass	Black	2222	-34	85	40
# BD-L9-068-191-NF	68	19.05 <i>0.750</i>	647.70 <i>25.500</i>	Nylon Covered Neoprene	Fibreglass	Black	3334	-34	85	40
# BD-L9-072-127-NF	72	12.70 <i>0.500</i>	685.80 <i>27.000</i>	Nylon Covered Neoprene	Fibreglass	Black	2222	-34	85	40
# BD-L9-072-191-NF	72	19.05 <i>0.750</i>	685.80 <i>27.000</i>	Nylon Covered Neoprene	Fibreglass	Black	3334	-34	85	40
# BD-L9-076-127-NF	76	12.70 <i>0.500</i>	723.90 <i>28.500</i>	Nylon Covered Neoprene	Fibreglass	Black	2222	-34	85	40
# BD-L9-076-191-NF	76	19.05 <i>0.750</i>	723.90 <i>28.500</i>	Nylon Covered Neoprene	Fibreglass	Black	3334	-34	85	40
# BD-L9-080-127-NF	80	12.70 <i>0.500</i>	762.00 <i>30.000</i>	Nylon Covered Neoprene	Fibreglass	Black	2222	-34	85	40

Indicates item not stocked at time of printing - Please enquire for lead time

E&OE Pricing and all details subject to change without notice - Copyright Miniature Bearings Australia Pty Ltd

MBA Size Listings are a guide to sizes only and must not be solely relied on for critical design information.

Belts - Timing - 9.525mm Pitch - L Double Sided

Part Number	Teeth (No.)	Nom. Width (+/-0.2) mm	Length mm	Material	Reinforcement	Appearance	Breaking Strength N	Min Temperature Deg C	Max Temperature Deg C	Tooth Angle (A) Deg.
		<i>inches</i>	<i>inches</i>							
# BD-L9-080-191-NF	80	19.05 <i>0.750</i>	762.00 <i>30.000</i>	Nylon Covered Neoprene	Fibreglass	Black	3334	-34	85	40
# BD-L9-086-127-NF	86	12.70 <i>0.500</i>	819.15 <i>32.250</i>	Nylon Covered Neoprene	Fibreglass	Black	2222	-34	85	40
# BD-L9-086-191-NF	86	19.05 <i>0.750</i>	819.15 <i>32.250</i>	Nylon Covered Neoprene	Fibreglass	Black	3334	-34	85	40
# BD-L9-092-127-NF	92	12.70 <i>0.500</i>	876.30 <i>34.500</i>	Nylon Covered Neoprene	Fibreglass	Black	2222	-34	85	40
# BD-L9-092-191-NF	92	19.05 <i>0.750</i>	876.30 <i>34.500</i>	Nylon Covered Neoprene	Fibreglass	Black	3334	-34	85	40
# BD-L9-098-127-NF	98	12.70 <i>0.500</i>	933.45 <i>36.750</i>	Nylon Covered Neoprene	Fibreglass	Black	2222	-34	85	40
# BD-L9-098-191-NF	98	19.05 <i>0.750</i>	933.45 <i>36.750</i>	Nylon Covered Neoprene	Fibreglass	Black	3334	-34	85	40
# BD-L9-104-127-NF	104	12.70 <i>0.500</i>	990.60 <i>39.000</i>	Nylon Covered Neoprene	Fibreglass	Black	2222	-34	85	40

Indicates item not stocked at time of printing - Please enquire for lead time

E&OE Pricing and all details subject to change without notice - Copyright Miniature Bearings Australia Pty Ltd

MBA Size Listings are a guide to sizes only and must not be solely relied on for critical design information.

Belts - Timing - 9.525mm Pitch - L Double Sided

Part Number	Teeth (No.)	Nom. Width (+/-0.2) mm	Length mm	Material	Reinforcement	Appearance	Breaking Strength N	Min Temperature Deg C	Max Temperature Deg C	Tooth Angle (A) Deg.
		<i>inches</i>	<i>inches</i>							
# BD-L9-104-191-NF	104	19.05 <i>0.750</i>	990.60 <i>39.000</i>	Nylon Covered Neoprene	Fibreglass	Black	3334	-34	85	40
# BD-L9-112-127-NF	112	12.70 <i>0.500</i>	1066.80 <i>42.000</i>	Nylon Covered Neoprene	Fibreglass	Black	2222	-34	85	40
# BD-L9-112-191-NF	112	19.05 <i>0.750</i>	1066.80 <i>42.000</i>	Nylon Covered Neoprene	Fibreglass	Black	3334	-34	85	40
# BD-L9-120-127-NF	120	12.70 <i>0.500</i>	1143.00 <i>45.000</i>	Nylon Covered Neoprene	Fibreglass	Black	2222	-34	85	40
# BD-L9-120-191-NF	120	19.05 <i>0.750</i>	1143.00 <i>45.000</i>	Nylon Covered Neoprene	Fibreglass	Black	3334	-34	85	40
# BD-L9-128-127-NF	128	12.70 <i>0.500</i>	1219.20 <i>48.000</i>	Nylon Covered Neoprene	Fibreglass	Black	2222	-34	85	40
# BD-L9-128-191-NF	128	19.05 <i>0.750</i>	1219.20 <i>48.000</i>	Nylon Covered Neoprene	Fibreglass	Black	3334	-34	85	40
# BD-L9-136-127-NF	136	12.70 <i>0.500</i>	1295.40 <i>51.000</i>	Nylon Covered Neoprene	Fibreglass	Black	2222	-34	85	40

Indicates item not stocked at time of printing - Please enquire for lead time

E&OE Pricing and all details subject to change without notice - Copyright Miniature Bearings Australia Pty Ltd

MBA Size Listings are a guide to sizes only and must not be solely relied on for critical design information.

Belts - Timing - 9.525mm Pitch - L Double Sided

Part Number	Teeth (No.)	Nom. Width (+/-0.2) mm	Length mm	Material	Reinforcement	Appearance	Breaking Strength N	Min Temperature Deg C	Max Temperature Deg C	Tooth Angle (A) Deg.
		<i>inches</i>	<i>inches</i>							
# BD-L9-136-191-NF	136	19.05	1295.40	Nylon Covered Neoprene	Fibreglass	Black	3334	-34	85	40
		<i>0.750</i>	<i>51.000</i>							
# BD-L9-144-127-NF	144	12.70	1371.60	Nylon Covered Neoprene	Fibreglass	Black	2222	-34	85	40
		<i>0.500</i>	<i>54.000</i>							
# BD-L9-144-191-NF	144	19.05	1371.60	Nylon Covered Neoprene	Fibreglass	Black	3334	-34	85	40
		<i>0.750</i>	<i>54.000</i>							
# BD-L9-160-127-NF	160	12.70	1524.00	Nylon Covered Neoprene	Fibreglass	Black	2222	-34	85	40
		<i>0.500</i>	<i>60.000</i>							
# BD-L9-160-191-NF	160	19.05	1524.00	Nylon Covered Neoprene	Fibreglass	Black	3334	-34	85	40
		<i>0.750</i>	<i>60.000</i>							
# BD-L9-176-127-NF	176	12.70	1676.40	Nylon Covered Neoprene	Fibreglass	Black	2222	-34	85	40
		<i>0.500</i>	<i>66.000</i>							
# BD-L9-176-191-NF	176	19.05	1676.40	Nylon Covered Neoprene	Fibreglass	Black	3334	-34	85	40
		<i>0.750</i>	<i>66.000</i>							

Indicates item not stocked at time of printing - Please enquire for lead time

E&OE Pricing and all details subject to change without notice - Copyright Miniature Bearings Australia Pty Ltd

MBA Size Listings are a guide to sizes only and must not be solely relied on for critical design information.



DISTRIBUTED BY

Ask us to put your name and address here

<http://www.minibearings.com.au/product>

Ph +61 7 3245 7977

Fax +61 7 3245 1017

Catalogue requests to catalogues@minibearings.com.au
