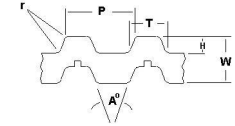




# MBA

## Belts - Timing - 10.000mm Pitch - T10 Double Sided



### T Series Metric Timing Belts.

Pitch (P) - 10.000mm.

Tooth Length (T) - 3.25mm.

Tooth Height (H) - 2.50mm.

Belt Height (W) - 7.00mm - Corner Radii ( r ) - 0.60mm.

Breaking strength is not indicative of working strength.

### Belts - Timing - 10.000mm Pitch - T10 Double Sided

Part Number	Teeth (No.)	Nom. Width mm	Length mm	Material	Reinforcement	Appearance	Breaking Strength N	Min Temperature Deg C	Max Temperature Deg C	Tooth Angle (A) Deg.
		<i>inches</i>	<i>inches</i>							
# BD-T10-053-150-PF	53	15.00 <i>0.591</i>	530.00 <i>20.866</i>	Polyurethane	Fibreglass	Translucent	3990	-18	82	40
# BD-T10-053-250-PF	53	25.00 <i>0.984</i>	530.00 <i>20.866</i>	Polyurethane	Fibreglass	Translucent	6650	-18	82	40
# BD-T10-063-150-PF	63	15.00 <i>0.591</i>	630.00 <i>24.803</i>	Polyurethane	Fibreglass	Translucent	3990	-18	82	40

# Indicates item not stocked at time of printing - Please enquire for lead time

E&OE Pricing and all details subject to change without notice - Copyright Miniature Bearings Australia Pty Ltd

MBA Size Listings are a guide to sizes only and must not be solely relied on for critical design information.

## Belts - Timing - 10.000mm Pitch - T10 Double Sided

Part Number	Teeth (No.)	Nom. Width mm	Length mm	Material	Reinforcement	Appearance	Breaking Strength N	Min Temperature Deg C	Max Temperature Deg C	Tooth Angle (A) Deg.
		<i>inches</i>	<i>inches</i>							
# BD-T10-063-250-PF	63	25.00 <i>0.984</i>	630.00 <i>24.803</i>	Polyurethane	Fibreglass	Translucent	6650	-18	82	40
# BD-T10-066-150-PF	66	15.00 <i>0.591</i>	660.00 <i>25.984</i>	Polyurethane	Fibreglass	Translucent	3990	-18	82	40
# BD-T10-066-250-PF	66	25.00 <i>0.984</i>	660.00 <i>25.984</i>	Polyurethane	Fibreglass	Translucent	6650	-18	82	40
# BD-T10-070-150-PF	70	15.00 <i>0.591</i>	700.00 <i>27.559</i>	Polyurethane	Fibreglass	Translucent	3990	-18	82	40
# BD-T10-070-250-PF	70	25.00 <i>0.984</i>	700.00 <i>27.559</i>	Polyurethane	Fibreglass	Translucent	6650	-18	82	40
# BD-T10-072-150-PF	72	15.00 <i>0.591</i>	720.00 <i>28.346</i>	Polyurethane	Fibreglass	Translucent	3990	-18	82	40
# BD-T10-072-250-PF	72	25.00 <i>0.984</i>	720.00 <i>28.346</i>	Polyurethane	Fibreglass	Translucent	6650	-18	82	40
# BD-T10-080-150-PF	80	15.00 <i>0.591</i>	800.00 <i>31.496</i>	Polyurethane	Fibreglass	Translucent	3990	-18	82	40
# BD-T10-080-250-PF	80	25.00 <i>0.984</i>	800.00 <i>31.496</i>	Polyurethane	Fibreglass	Translucent	6650	-18	82	40
# BD-T10-084-150-PF	84	15.00 <i>0.591</i>	840.00 <i>33.071</i>	Polyurethane	Fibreglass	Translucent	3990	-18	82	40

# Indicates item not stocked at time of printing - Please enquire for lead time

E&OE Pricing and all details subject to change without notice - Copyright Miniature Bearings Australia Pty Ltd

MBA Size Listings are a guide to sizes only and must not be solely relied on for critical design information.

## Belts - Timing - 10.000mm Pitch - T10 Double Sided

Part Number	Teeth (No.)	Nom. Width mm	Length mm	Material	Reinforcement	Appearance	Breaking Strength N	Min Temperature Deg C	Max Temperature Deg C	Tooth Angle (A) Deg.
		<i>inches</i>	<i>inches</i>							
# BD-T10-084-250-PF	84	25.00 <i>0.984</i>	840.00 <i>33.071</i>	Polyurethane	Fibreglass	Translucent	6650	-18	82	40
# BD-T10-090-150-PF	90	15.00 <i>0.591</i>	900.00 <i>35.433</i>	Polyurethane	Fibreglass	Translucent	3990	-18	82	40
# BD-T10-090-250-PF	90	25.00 <i>0.984</i>	900.00 <i>35.433</i>	Polyurethane	Fibreglass	Translucent	6650	-18	82	40
# BD-T10-098-150-PF	98	15.00 <i>0.591</i>	980.00 <i>38.583</i>	Polyurethane	Fibreglass	Translucent	3990	-18	82	40
# BD-T10-098-250-PF	98	25.00 <i>0.984</i>	980.00 <i>38.583</i>	Polyurethane	Fibreglass	Translucent	6650	-18	82	40
# BD-T10-110-150-PF	110	15.00 <i>0.591</i>	1100.00 <i>43.307</i>	Polyurethane	Fibreglass	Translucent	3990	-18	82	40
# BD-T10-110-250-PF	110	25.00 <i>0.984</i>	1100.00 <i>43.307</i>	Polyurethane	Fibreglass	Translucent	6650	-18	82	40
# BD-T10-121-150-PF	121	15.00 <i>0.591</i>	1210.00 <i>47.638</i>	Polyurethane	Fibreglass	Translucent	3990	-18	82	40
# BD-T10-121-250-PF	121	25.00 <i>0.984</i>	1210.00 <i>47.638</i>	Polyurethane	Fibreglass	Translucent	6650	-18	82	40
# BD-T10-124-150-PF	124	15.00 <i>0.591</i>	1240.00 <i>48.819</i>	Polyurethane	Fibreglass	Translucent	3990	-18	82	40

# Indicates item not stocked at time of printing - Please enquire for lead time

E&OE Pricing and all details subject to change without notice - Copyright Miniature Bearings Australia Pty Ltd

MBA Size Listings are a guide to sizes only and must not be solely relied on for critical design information.

## Belts - Timing - 10.000mm Pitch - T10 Double Sided

Part Number	Teeth (No.)	Nom. Width mm	Length mm	Material	Reinforcement	Appearance	Breaking Strength N	Min Temperature Deg C	Max Temperature Deg C	Tooth Angle (A) Deg.
		<i>inches</i>	<i>inches</i>							
# BD-T10-124-250-PF	124	25.00 <i>0.984</i>	1240.00 <i>48.819</i>	Polyurethane	Fibreglass	Translucent	6650	-18	82	40
# BD-T10-125-150-PF	125	15.00 <i>0.591</i>	1250.00 <i>49.213</i>	Polyurethane	Fibreglass	Translucent	3990	-18	82	40
# BD-T10-125-250-PF	125	25.00 <i>0.984</i>	1250.00 <i>49.213</i>	Polyurethane	Fibreglass	Translucent	6650	-18	82	40
# BD-T10-132-150-PF	132	15.00 <i>0.591</i>	1320.00 <i>51.969</i>	Polyurethane	Fibreglass	Translucent	3990	-18	82	40
# BD-T10-132-250-PF	132	25.00 <i>0.984</i>	1320.00 <i>51.969</i>	Polyurethane	Fibreglass	Translucent	6650	-18	82	40
# BD-T10-135-150-PF	135	15.00 <i>0.591</i>	1350.00 <i>53.150</i>	Polyurethane	Fibreglass	Translucent	3990	-18	82	40
# BD-T10-135-250-PF	135	25.00 <i>0.984</i>	1350.00 <i>53.150</i>	Polyurethane	Fibreglass	Translucent	6650	-18	82	40
# BD-T10-142-150-PF	142	15.00 <i>0.591</i>	1420.00 <i>55.906</i>	Polyurethane	Fibreglass	Translucent	3990	-18	82	40
# BD-T10-142-250-PF	142	25.00 <i>0.984</i>	1420.00 <i>55.906</i>	Polyurethane	Fibreglass	Translucent	6650	-18	82	40
# BD-T10-150-150-PF	150	15.00 <i>0.591</i>	1500.00 <i>59.055</i>	Polyurethane	Fibreglass	Translucent	3990	-18	82	40

# Indicates item not stocked at time of printing - Please enquire for lead time

E&OE Pricing and all details subject to change without notice - Copyright Miniature Bearings Australia Pty Ltd

MBA Size Listings are a guide to sizes only and must not be solely relied on for critical design information.

## Belts - Timing - 10.000mm Pitch - T10 Double Sided

Part Number	Teeth (No.)	Nom. Width mm	Length mm	Material	Reinforcement	Appearance	Breaking Strength N	Min Temperature Deg C	Max Temperature Deg C	Tooth Angle (A) Deg.
		<i>inches</i>	<i>inches</i>							
# BD-T10-150-250-PF	150	25.00 <i>0.984</i>	1500.00 <i>59.055</i>	Polyurethane	Fibreglass	Translucent	6650	-18	82	40
# BD-T10-161-150-PF	161	15.00 <i>0.591</i>	1610.00 <i>63.386</i>	Polyurethane	Fibreglass	Translucent	3990	-18	82	40
# BD-T10-161-250-PF	161	25.00 <i>0.984</i>	1610.00 <i>63.386</i>	Polyurethane	Fibreglass	Translucent	6650	-18	82	40
# BD-T10-180-150-PF	180	15.00 <i>0.591</i>	1800.00 <i>70.866</i>	Polyurethane	Fibreglass	Translucent	3990	-18	82	40
# BD-T10-180-250-PF	180	25.00 <i>0.984</i>	1800.00 <i>70.866</i>	Polyurethane	Fibreglass	Translucent	6650	-18	82	40
# BD-T10-188-150-PF	188	15.00 <i>0.591</i>	1880.00 <i>74.016</i>	Polyurethane	Fibreglass	Translucent	3990	-18	82	40
# BD-T10-188-250-PF	188	25.00 <i>0.984</i>	1880.00 <i>74.016</i>	Polyurethane	Fibreglass	Translucent	6650	-18	82	40

# Indicates item not stocked at time of printing - Please enquire for lead time

E&OE Pricing and all details subject to change without notice - Copyright Miniature Bearings Australia Pty Ltd

MBA Size Listings are a guide to sizes only and must not be solely relied on for critical design information.



DISTRIBUTED BY

Ask us to put your name and address here

<http://www.minibearings.com.au/product>

Ph +61 7 3245 7977

Fax +61 7 3245 1017

Catalogue requests to [catalogues@minibearings.com.au](mailto:catalogues@minibearings.com.au)
