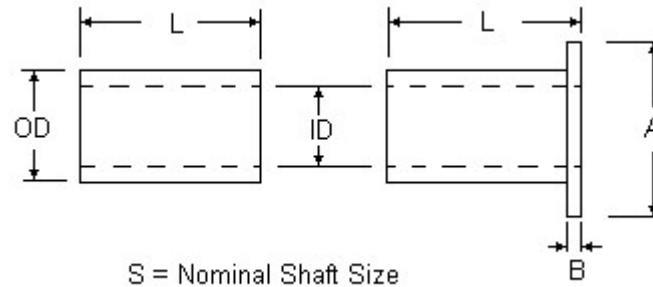




MBA

Bushes - Plastic - Ertalyte TX



Tolerances

ID = -0.000 / +0.040
 OD = -0.000 / +0.050
 L = +/- 0.130
 A = +/- 0.130
 B = +/- 0.080

Self lubricated, high mechanical strength, stiffness and hardness.

Specific Gravity 1.44 g/cm³.

Operating Temp 115 C / 5000 hrs - 100 C / 20000 hrs.

Tensile Strength 76 Mpa.

Hardness 94 Rockwell M.

High mechanical strength, stiffness and hardness. Self lubricating.

Bushes - Plastic - Ertalyte TX

Part Number	Nom. ID (d) mm	Nom. OD (D) mm	Length (S) mm	Flange OD (A) mm	Flange Thickness (B) mm	Tolerance ID mm	Tolerance OD mm	Tolerance Length mm
	<i>inches</i>	<i>inches</i>	<i>inches</i>	<i>inches</i>	<i>inches</i>	<i>inches</i>	<i>inches</i>	<i>inches</i>
# BP00300-00600-0040-EX	3.000 <i>0.118</i>	6.000 <i>0.236</i>	4.000 <i>0.157</i>	None	-	+0.100 / -0.000	+0.100 / -0.000	+/- 0.130
BP00300-00600-0060-EX	3.000 <i>0.118</i>	6.000 <i>0.236</i>	6.000 <i>0.236</i>	None	-	+0.100 / -0.000	+0.100 / -0.000	+/- 0.130
# BP00318-00635-0064-EX	3.175 <i>0.125</i>	6.350 <i>0.250</i>	6.350 <i>0.250</i>	None	-	+0.100 / -0.000	+0.100 / -0.000	+/- 0.130

Indicates item not stocked at time of printing - Please enquire for lead time
 E&OE Pricing and all details subject to change without notice - Copyright Miniature Bearings Australia Pty Ltd
 MBA Size Listings are a guide to sizes only and must not be solely relied on for critical design information.

Bushes - Plastic - Ertalyte TX

Part Number	Nom. ID (d) mm	Nom. OD (D) mm	Length (S) mm	Flange OD (A) mm	Flange Thickness (B) mm	Tolerance ID mm	Tolerance OD mm	Tolerance Length mm
	<i>inches</i>	<i>inches</i>	<i>inches</i>	<i>inches</i>	<i>inches</i>	<i>inches</i>	<i>inches</i>	<i>inches</i>
# BP00318-00635-0095-EX	3.175 <i>0.125</i>	6.350 <i>0.250</i>	9.525 <i>0.375</i>	None	-	+0.100 / -0.000	+0.100 / -0.000	+/- 0.130
# BF00400-00800-0040-EX	4.000 <i>0.157</i>	8.000 <i>0.315</i>	4.000 <i>0.157</i>	10.00 <i>0.394</i>	2.00 <i>0.079</i>	+0.100 / -0.000	+0.100 / -0.000	+/- 0.130
# BP00400-00800-0040-EX	4.000 <i>0.157</i>	8.000 <i>0.315</i>	4.000 <i>0.157</i>	None	-	+0.100 / -0.000	+0.100 / -0.000	+/- 0.130
# BF00400-00800-0060-EX	4.000 <i>0.157</i>	8.000 <i>0.315</i>	6.000 <i>0.236</i>	10.00 <i>0.394</i>	2.00 <i>0.079</i>	+0.100 / -0.000	+0.100 / -0.000	+/- 0.130
# BP00400-00800-0060-EX	4.000 <i>0.157</i>	8.000 <i>0.315</i>	6.000 <i>0.236</i>	None	-	+0.100 / -0.000	+0.100 / -0.000	+/- 0.130
# BP00476-00794-0064-EX	4.762 <i>0.187</i>	7.938 <i>0.313</i>	6.350 <i>0.250</i>	None	-	+0.100 / -0.000	+0.100 / -0.000	+/- 0.130
# BF00476-00794-0064-EX	4.762 <i>0.187</i>	7.938 <i>0.313</i>	6.350 <i>0.250</i>	11.11 <i>0.437</i>	1.59 <i>0.063</i>	+0.100 / -0.000	+0.100 / -0.000	+/- 0.130
# BF00476-00794-0095-EX	4.762 <i>0.187</i>	7.938 <i>0.313</i>	9.525 <i>0.375</i>	11.11 <i>0.437</i>	1.59 <i>0.063</i>	+0.100 / -0.000	+0.100 / -0.000	+/- 0.130
# BP00476-00794-0095-EX	4.762 <i>0.187</i>	7.938 <i>0.313</i>	9.525 <i>0.375</i>	None	-	+0.100 / -0.000	+0.100 / -0.000	+/- 0.130
# BP00500-01000-0060-EX	5.000 <i>0.197</i>	10.000 <i>0.394</i>	6.000 <i>0.236</i>	None	-	+0.100 / -0.000	+0.100 / -0.000	+/- 0.130

Indicates item not stocked at time of printing - Please enquire for lead time

E&OE Pricing and all details subject to change without notice - Copyright Miniature Bearings Australia Pty Ltd

MBA Size Listings are a guide to sizes only and must not be solely relied on for critical design information.

Bushes - Plastic - Ertalyte TX

Part Number	Nom. ID (d) mm	Nom. OD (D) mm	Length (S) mm	Flange OD (A) mm	Flange Thickness (B) mm	Tolerance ID mm	Tolerance OD mm	Tolerance Length mm
	<i>inches</i>	<i>inches</i>	<i>inches</i>	<i>inches</i>	<i>inches</i>	<i>inches</i>	<i>inches</i>	<i>inches</i>
# BF00500-01000-0080-EX	5.000 <i>0.197</i>	10.000 <i>0.394</i>	8.000 <i>0.315</i>	12.00 <i>0.472</i>	2.00 <i>0.079</i>	+0.100 / -0.000	+0.100 / -0.000	+/- 0.130
# BP00500-01000-0080-EX	5.000 <i>0.197</i>	10.000 <i>0.394</i>	8.000 <i>0.315</i>	None	-	+0.100 / -0.000	+0.100 / -0.000	+/- 0.130
# BF00500-01000-0100-EX	5.000 <i>0.197</i>	10.000 <i>0.394</i>	10.000 <i>0.394</i>	12.00 <i>0.472</i>	2.00 <i>0.079</i>	+0.100 / -0.000	+0.100 / -0.000	+/- 0.130
# BP00500-01000-0100-EX	5.000 <i>0.197</i>	10.000 <i>0.394</i>	10.000 <i>0.394</i>	None	-	+0.100 / -0.000	+0.100 / -0.000	+/- 0.130
# BP00600-01000-0080-EX	6.000 <i>0.236</i>	10.000 <i>0.394</i>	8.000 <i>0.315</i>	None	-	+0.110 / -0.000	+0.100 / -0.000	+/- 0.130
# BF00600-01000-0080-EX	6.000 <i>0.236</i>	10.000 <i>0.394</i>	8.000 <i>0.315</i>	14.00 <i>0.551</i>	2.00 <i>0.079</i>	+0.110 / -0.000	+0.100 / -0.000	+/- 0.130
BF00600-01000-0120-EX	6.000 <i>0.236</i>	10.000 <i>0.394</i>	12.000 <i>0.472</i>	14.00 <i>0.551</i>	2.00 <i>0.079</i>	+0.110 / -0.000	+0.100 / -0.000	+/- 0.130
# BP00600-01000-0120-EX	6.000 <i>0.236</i>	10.000 <i>0.394</i>	12.000 <i>0.472</i>	None	-	+0.110 / -0.000	+0.100 / -0.000	+/- 0.130
# BP00635-00953-0064-EX	6.350 <i>0.250</i>	9.525 <i>0.375</i>	6.350 <i>0.250</i>	None	-	+0.110 / -0.000	+0.100 / -0.000	+/- 0.130
BF00635-00953-0095-EX	6.350 <i>0.250</i>	9.525 <i>0.375</i>	9.525 <i>0.375</i>	12.70 <i>0.500</i>	1.59 <i>0.063</i>	+0.110 / -0.000	+0.100 / -0.000	+/- 0.130

Indicates item not stocked at time of printing - Please enquire for lead time

E&OE Pricing and all details subject to change without notice - Copyright Miniature Bearings Australia Pty Ltd

MBA Size Listings are a guide to sizes only and must not be solely relied on for critical design information.

Bushes - Plastic - Ertalyte TX

Part Number	Nom. ID (d) mm	Nom. OD (D) mm	Length (S) mm	Flange OD (A) mm	Flange Thickness (B) mm	Tolerance ID mm	Tolerance OD mm	Tolerance Length mm
	<i>inches</i>	<i>inches</i>	<i>inches</i>	<i>inches</i>	<i>inches</i>	<i>inches</i>	<i>inches</i>	<i>inches</i>
BP00635-00953-0095-EX	6.350 <i>0.250</i>	9.525 <i>0.375</i>	9.525 <i>0.375</i>	None	-	+0.110 / -0.000	+0.100 / -0.000	+/- 0.130
# BF00635-00953-0127-EX	6.350 <i>0.250</i>	9.525 <i>0.375</i>	12.700 <i>0.500</i>	12.70 <i>0.500</i>	1.59 <i>0.063</i>	+0.110 / -0.000	+0.100 / -0.000	+/- 0.130
# BP00635-00953-0127-EX	6.350 <i>0.250</i>	9.525 <i>0.375</i>	12.700 <i>0.500</i>	None	-	+0.110 / -0.000	+0.100 / -0.000	+/- 0.130
# BP00635-01700-0059-EX	6.350 <i>0.250</i>	17.000 <i>0.669</i>	5.850 <i>0.230</i>	None	-	+0.110 / -0.000	+0.127 / -0.000	+/- 0.130
# BF00794-01111-0095-EX	7.938 <i>0.313</i>	11.112 <i>0.437</i>	9.525 <i>0.375</i>	14.29 <i>0.563</i>	1.59 <i>0.063</i>	+0.127 / -0.000	+0.115 / -0.000	+/- 0.130
# BF00794-01111-0127-EX	7.938 <i>0.313</i>	11.112 <i>0.437</i>	12.700 <i>0.500</i>	14.29 <i>0.563</i>	1.59 <i>0.063</i>	+0.127 / -0.000	+0.115 / -0.000	+/- 0.130
# BP00794-01270-0095-EX	7.938 <i>0.313</i>	12.700 <i>0.500</i>	9.525 <i>0.375</i>	None	-	+0.127 / -0.000	+0.127 / -0.000	+/- 0.130
# BP00794-01270-0127-EX	7.938 <i>0.313</i>	12.700 <i>0.500</i>	12.700 <i>0.500</i>	None	-	+0.127 / -0.000	+0.127 / -0.000	+/- 0.130
BF00800-01200-0080-EX	8.000 <i>0.315</i>	12.000 <i>0.472</i>	8.000 <i>0.315</i>	15.80 <i>0.622</i>	2.00 <i>0.079</i>	+0.127 / -0.000	+0.127 / -0.000	+/- 0.130
# BP00800-01200-0080-EX	8.000 <i>0.315</i>	12.000 <i>0.472</i>	8.000 <i>0.315</i>	None	-	+0.127 / -0.000	+0.127 / -0.000	+/- 0.130

Indicates item not stocked at time of printing - Please enquire for lead time

E&OE Pricing and all details subject to change without notice - Copyright Miniature Bearings Australia Pty Ltd

MBA Size Listings are a guide to sizes only and must not be solely relied on for critical design information.

Bushes - Plastic - Ertalyte TX

Part Number	Nom. ID (d) mm	Nom. OD (D) mm	Length (S) mm	Flange OD (A) mm	Flange Thickness (B) mm	Tolerance ID mm	Tolerance OD mm	Tolerance Length mm
	<i>inches</i>	<i>inches</i>	<i>inches</i>	<i>inches</i>	<i>inches</i>	<i>inches</i>	<i>inches</i>	<i>inches</i>
BF00800-01200-0120-EX	8.000 <i>0.315</i>	12.000 <i>0.472</i>	12.000 <i>0.472</i>	15.80 <i>0.622</i>	2.00 <i>0.079</i>	+0.127 / -0.000	+0.127 / -0.000	+/- 0.130
# BP00800-01200-0120-EX	8.000 <i>0.315</i>	12.000 <i>0.472</i>	12.000 <i>0.472</i>	None	-	+0.127 / -0.000	+0.127 / -0.000	+/- 0.130
# BF00953-01270-0095-EX	9.525 <i>0.375</i>	12.700 <i>0.500</i>	9.525 <i>0.375</i>	15.88 <i>0.625</i>	1.59 <i>0.063</i>	+0.140 / -0.000	+0.127 / -0.000	+/- 0.130
# BP00953-01270-0095-EX	9.525 <i>0.375</i>	12.700 <i>0.500</i>	9.525 <i>0.375</i>	None	-	+0.140 / -0.000	+0.127 / -0.000	+/- 0.130
# BF00953-01270-0127-EX	9.525 <i>0.375</i>	12.700 <i>0.500</i>	12.700 <i>0.500</i>	15.88 <i>0.625</i>	1.59 <i>0.063</i>	+0.140 / -0.000	+0.127 / -0.000	+/- 0.130
# BP00953-01270-0127-EX	9.525 <i>0.375</i>	12.700 <i>0.500</i>	12.700 <i>0.500</i>	None	-	+0.140 / -0.000	+0.127 / -0.000	+/- 0.130
# BF01000-01600-0120-EX	10.000 <i>0.394</i>	16.000 <i>0.630</i>	12.000 <i>0.472</i>	20.00 <i>0.787</i>	3.00 <i>0.118</i>	+0.140 / -0.000	+0.127 / -0.000	+/- 0.130
# BP01000-01600-0120-EX	10.000 <i>0.394</i>	16.000 <i>0.630</i>	12.000 <i>0.472</i>	None	-	+0.140 / -0.000	+0.127 / -0.000	+/- 0.130
BF01000-01600-0160-EX	10.000 <i>0.394</i>	16.000 <i>0.630</i>	16.000 <i>0.630</i>	20.00 <i>0.787</i>	3.00 <i>0.118</i>	+0.140 / -0.000	+0.127 / -0.000	+/- 0.130
BP01000-01600-0160-EX	10.000 <i>0.394</i>	16.000 <i>0.630</i>	16.000 <i>0.630</i>	None	-	+0.140 / -0.000	+0.127 / -0.000	+/- 0.130

Indicates item not stocked at time of printing - Please enquire for lead time

E&OE Pricing and all details subject to change without notice - Copyright Miniature Bearings Australia Pty Ltd

MBA Size Listings are a guide to sizes only and must not be solely relied on for critical design information.

Bushes - Plastic - Ertalyte TX

Part Number	Nom. ID (d) mm	Nom. OD (D) mm	Length (S) mm	Flange OD (A) mm	Flange Thickness (B) mm	Tolerance ID mm	Tolerance OD mm	Tolerance Length mm
	<i>inches</i>	<i>inches</i>	<i>inches</i>	<i>inches</i>	<i>inches</i>	<i>inches</i>	<i>inches</i>	<i>inches</i>
BF01270-01905-0127-EX	12.700 <i>0.500</i>	19.050 <i>0.750</i>	12.700 <i>0.500</i>	25.40 <i>1.000</i>	2.38 <i>0.094</i>	+0.140 / -0.000	+0.127 / -0.000	+/- 0.130
# BP01270-01905-0127-EX	12.700 <i>0.500</i>	19.050 <i>0.750</i>	12.700 <i>0.500</i>	None	-	+0.140 / -0.000	+0.127 / -0.000	+/- 0.130
# BF01270-01905-0191-EX	12.700 <i>0.500</i>	19.050 <i>0.750</i>	19.050 <i>0.750</i>	25.40 <i>1.000</i>	2.38 <i>0.094</i>	+0.140 / -0.000	+0.127 / -0.000	+/- 0.130
# BP01270-01905-0191-EX	12.700 <i>0.500</i>	19.050 <i>0.750</i>	19.050 <i>0.750</i>	None	-	+0.140 / -0.000	+0.127 / -0.000	+/- 0.130

Indicates item not stocked at time of printing - Please enquire for lead time

E&OE Pricing and all details subject to change without notice - Copyright Miniature Bearings Australia Pty Ltd

MBA Size Listings are a guide to sizes only and must not be solely relied on for critical design information.



DISTRIBUTED BY

Ask us to put your name and address here

<http://www.minibearings.com.au/product>

Ph +61 7 3245 7977

Fax +61 7 3245 1017

Catalogue requests to catalogues@minibearings.com.au
