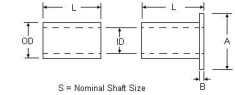




# MBA

## Bushes - Steel - PTFE Lined - Split



Similar style to Glacier™ bushes.

### Bushes - Steel - PTFE Lined - Split

Part Number	Nom. ID (S) mm <i>inches</i>	Nom. OD (D) mm <i>inches</i>	Length (L) mm <i>inches</i>	Flange OD (A) mm <i>inches</i>	Flange Thickness (B) mm <i>inches</i>
BP00318-00476-0032-DU	3.175 <i>0.125</i>	4.762 <i>0.187</i>	3.175 <i>0.125</i>	None	-
BP00476-00635-0048-DU	4.762 <i>0.187</i>	6.350 <i>0.250</i>	4.762 <i>0.187</i>	None	-
BP00635-00794-0127-DU	6.350 <i>0.250</i>	7.938 <i>0.313</i>	12.700 <i>0.500</i>	None	-
BF00800-01000-0095-DU	8.000 <i>0.315</i>	10.000 <i>0.394</i>	9.500 <i>0.374</i>	15.50 <i>0.610</i>	1.00 <i>0.039</i>
BP01000-01200-0100-DU	10.000 <i>0.394</i>	12.000 <i>0.472</i>	10.000 <i>0.394</i>	None	-

# Indicates item not stocked at time of printing - Please enquire for lead time

E&OE Pricing and all details subject to change without notice - Copyright Miniature Bearings Australia Pty Ltd

MBA Size Listings are a guide to sizes only and must not be solely relied on for critical design information.

## Bushes - Steel - PTFE Lined - Split

Part Number	Nom. ID (S) mm	Nom. OD (D) mm	Length (L) mm	Flange OD (A) mm	Flange Thickness (B) mm
	<i>inches</i>	<i>inches</i>	<i>inches</i>	<i>inches</i>	<i>inches</i>
# BF01000-01200-0120-DU	10.000 <i>0.394</i>	12.000 <i>0.472</i>	12.000 <i>0.472</i>		
BP01200-01400-1200-DU	12.000 <i>0.472</i>	14.000 <i>0.551</i>	12.000 <i>0.472</i>		

# Indicates item not stocked at time of printing - Please enquire for lead time

E&OE Pricing and all details subject to change without notice - Copyright Miniature Bearings Australia Pty Ltd

MBA Size Listings are a guide to sizes only and must not be solely relied on for critical design information.



DISTRIBUTED BY

Ask us to put your name and address here

<http://www.minibearings.com.au/product>

Ph +61 7 3245 7977

Fax +61 7 3245 1017

Catalogue requests to [catalogues@minibearings.com.au](mailto:catalogues@minibearings.com.au)
