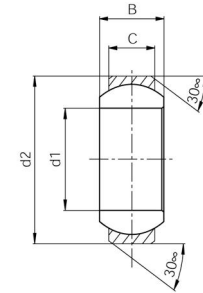




MBA

Bushings - Spherical - Plastic



Ball Material W300. Housing Iglidur G.

Maintenance Free. Self lubricating.

Compensates for axial loads and misalignment.

Corrosion resistant.

High vibration dampening capacity.

Bushings - Spherical - Plastic

Part Number	Bore (d1) mm	OD (d2) mm	Width (B) mm	Outer Width (C) mm	Max Pivot angle Deg.	Max Torque Nm	Max Static Comp. str. (Radial) N	Max Static Comp. str. (Axial) N
	<i>inches</i>	<i>inches</i>	<i>inches</i>	<i>inches</i>				
GE-03.00x10.00W300	3.000 <i>0.118</i>	10.000 <i>0.394</i>	6.000 <i>0.236</i>	4.50 <i>0.177</i>	32	3.0	530	200
GE-04.00x12.00W300	4.000 <i>0.157</i>	12.000 <i>0.472</i>	5.000 <i>0.197</i>	3.00 <i>0.118</i>	37	2.0	600	100
GE-04.83x14.29W300	4.830 <i>0.190</i>	14.290 <i>0.563</i>	7.930 <i>0.312</i>	5.54 <i>0.218</i>	34	5.0	1000	150

Indicates item not stocked at time of printing - Please enquire for lead time

E&OE Pricing and all details subject to change without notice - Copyright Miniature Bearings Australia Pty Ltd

MBA Size Listings are a guide to sizes only and must not be solely relied on for critical design information.

Bushings - Spherical - Plastic

Part Number	Bore (d1) mm	OD (d2) mm	Width (B) mm	Outer Width (C) mm	Max Pivot angle Deg.	Max Torque Nm	Max Static Comp. str. (Radial) N	Max Static Comp. str. (Axial) N
	<i>inches</i>	<i>inches</i>	<i>inches</i>	<i>inches</i>				
GE-05.00x13.00W300	5.000 <i>0.197</i>	13.000 <i>0.512</i>	8.000 <i>0.315</i>	6.00 <i>0.236</i>	30	5.0	1250	500
# GE-05.00x14.00W300	5.000 <i>0.197</i>	14.000 <i>0.551</i>	6.000 <i>0.236</i>	4.00 <i>0.157</i>	33	2.0	950	150
# GE-06.00x14.00W300	6.000 <i>0.236</i>	14.000 <i>0.551</i>	6.000 <i>0.236</i>	4.00 <i>0.157</i>	27	2.5	1050	150
# GE-06.00x16.00W300	6.000 <i>0.236</i>	16.000 <i>0.630</i>	9.000 <i>0.354</i>	6.50 <i>0.256</i>	29	10.0	1750	700
# GE-06.35x16.67W300	6.350 <i>0.250</i>	16.670 <i>0.656</i>	9.530 <i>0.375</i>	6.35 <i>0.250</i>	30	10.0	1500	250
# GE-07.94x19.05W300	7.940 <i>0.313</i>	19.050 <i>0.750</i>	11.100 <i>0.437</i>	7.14 <i>0.281</i>	29	12.0	2000	300
# GE-08.00x16.00W300	8.000 <i>0.315</i>	16.000 <i>0.630</i>	8.000 <i>0.315</i>	5.00 <i>0.197</i>	24	7.0	1350	200
# GE-08.00x19.00W300	8.000 <i>0.315</i>	19.000 <i>0.748</i>	12.000 <i>0.472</i>	9.00 <i>0.354</i>	25	12.0	2350	1000
# GE-09.53x20.64W300	9.530 <i>0.375</i>	20.640 <i>0.813</i>	12.700 <i>0.500</i>	7.93 <i>0.312</i>	25	20.0	2800	325
# GE-10.00x19.00W300	10.000 <i>0.394</i>	19.000 <i>0.748</i>	9.000 <i>0.354</i>	6.00 <i>0.236</i>	24	14.0	2000	300

Indicates item not stocked at time of printing - Please enquire for lead time

E&OE Pricing and all details subject to change without notice - Copyright Miniature Bearings Australia Pty Ltd

MBA Size Listings are a guide to sizes only and must not be solely relied on for critical design information.

Bushings - Spherical - Plastic

Part Number	Bore (d1) mm	OD (d2) mm	Width (B) mm	Outer Width (C) mm	Max Pivot angle Deg.	Max Torque Nm	Max Static Comp. str. (Radial) N	Max Static Comp. str. (Axial) N
	<i>inches</i>	<i>inches</i>	<i>inches</i>	<i>inches</i>				
# GE-10.00x22.00W300	10.000 <i>0.394</i>	22.000 <i>0.866</i>	14.000 <i>0.551</i>	10.50 <i>0.413</i>	25	20.0	3550	1100
# GE-11.11x23.81W300	11.110 <i>0.437</i>	23.810 <i>0.937</i>	14.280 <i>0.562</i>	8.71 <i>0.343</i>	25	30.0	3750	350
# GE-12.00x22.00W300	12.000 <i>0.472</i>	22.000 <i>0.866</i>	10.000 <i>0.394</i>	7.00 <i>0.276</i>	21	25.0	2250	450
GE-12.00x26.00W300	12.000 <i>0.472</i>	26.000 <i>1.024</i>	16.000 <i>0.630</i>	12.00 <i>0.472</i>	25	30.0	4200	1150
# GE-12.70x26.99W300	12.700 <i>0.500</i>	26.990 <i>1.063</i>	15.880 <i>0.625</i>	9.91 <i>0.390</i>	25	35.0	4250	400
# GE-14.00x28.00W300	14.000 <i>0.551</i>	28.000 <i>1.102</i>	19.000 <i>0.748</i>	13.50 <i>0.531</i>	23	35.0	5700	1200
# GE-15.00x26.00W300	15.000 <i>0.591</i>	26.000 <i>1.024</i>	12.000 <i>0.472</i>	9.00 <i>0.354</i>	21	30.0	3450	500
# GE-15.88x30.16W300	15.880 <i>0.625</i>	30.160 <i>1.187</i>	19.050 <i>0.750</i>	12.70 <i>0.500</i>	23	40.0	5300	450
# GE-16.00x28.00W300	16.000 <i>0.630</i>	28.000 <i>1.102</i>	13.000 <i>0.512</i>	9.50 <i>0.374</i>	21	32.0	3900	750
# GE-16.00x32.00W300	16.000 <i>0.630</i>	32.000 <i>1.260</i>	21.000 <i>0.827</i>	15.00 <i>0.591</i>	23	40.0	7500	1800

Indicates item not stocked at time of printing - Please enquire for lead time

E&OE Pricing and all details subject to change without notice - Copyright Miniature Bearings Australia Pty Ltd

MBA Size Listings are a guide to sizes only and must not be solely relied on for critical design information.

Bushings - Spherical - Plastic

Part Number	Bore (d1) mm	OD (d2) mm	Width (B) mm	Outer Width (C) mm	Max Pivot angle Deg.	Max Torque Nm	Max Static Comp. str. (Radial) N	Max Static Comp. str. (Axial) N
	<i>inches</i>	<i>inches</i>	<i>inches</i>	<i>inches</i>				
# GE-17.00x30.00W300	17.000 <i>0.669</i>	30.000 <i>1.181</i>	14.000 <i>0.551</i>	10.00 <i>0.394</i>	21	35.0	4100	850
# GE-18.00x35.00W300	18.000 <i>0.709</i>	35.000 <i>1.378</i>	23.000 <i>0.906</i>	16.50 <i>0.650</i>	23	45.0	8500	1900
# GE-19.05x36.51W300	19.050 <i>0.750</i>	36.510 <i>1.437</i>	22.230 <i>0.875</i>	15.06 <i>0.593</i>	23	55.0	8500	750
# GE-20.00x35.00W300	20.000 <i>0.787</i>	35.000 <i>1.378</i>	16.000 <i>0.630</i>	12.00 <i>0.472</i>	18	40.0	5350	1200
# GE-20.00x40.00W300	20.000 <i>0.787</i>	40.000 <i>1.575</i>	25.000 <i>0.984</i>	18.00 <i>0.709</i>	23	55.0	9800	2500
# GE-22.00x42.00W300	22.000 <i>0.866</i>	42.000 <i>1.654</i>	28.000 <i>1.102</i>	20.00 <i>0.787</i>	22	60.0	11700	2700
# GE-25.00x42.00W300	25.000 <i>0.984</i>	42.000 <i>1.654</i>	20.000 <i>0.787</i>	16.00 <i>0.630</i>	16	55.0	8200	1750
# GE-25.00x47.00W300	25.000 <i>0.984</i>	47.000 <i>1.850</i>	31.000 <i>1.220</i>	22.00 <i>0.866</i>	22	65.0	13600	3200
# GE-25.40x53.98W300	25.400 <i>1.000</i>	53.980 <i>2.125</i>	34.930 <i>1.375</i>	25.53 <i>1.005</i>	23	65.0	13600	980
# GE-30.00x47.00W300	30.000 <i>1.181</i>	47.000 <i>1.850</i>	22.000 <i>0.866</i>	18.00 <i>0.709</i>	13	70.0	11000	2500

Indicates item not stocked at time of printing - Please enquire for lead time

E&OE Pricing and all details subject to change without notice - Copyright Miniature Bearings Australia Pty Ltd

MBA Size Listings are a guide to sizes only and must not be solely relied on for critical design information.

Bushings - Spherical - Plastic

Part Number	Bore (d1) mm	OD (d2) mm	Width (B) mm	Outer Width (C) mm	Max Pivot angle Deg.	Max Torque Nm	Max Static Comp. str. (Radial) N	Max Static Comp. str. (Axial) N
	<i>inches</i>	<i>inches</i>	<i>inches</i>	<i>inches</i>				
GE-30.00x55.00W300	30.000	55.000	37.000	25.00	22	70.0	20000	3750
	<i>1.181</i>	<i>2.165</i>	<i>1.457</i>	<i>0.984</i>				

Indicates item not stocked at time of printing - Please enquire for lead time

E&OE Pricing and all details subject to change without notice - Copyright Miniature Bearings Australia Pty Ltd

MBA Size Listings are a guide to sizes only and must not be solely relied on for critical design information.



DISTRIBUTED BY

Ask us to put your name and address here

<http://www.minibearings.com.au/product>

Ph +61 7 3245 7977

Fax +61 7 3245 1017

Catalogue requests to catalogues@minibearings.com.au
