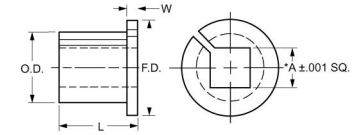




# MBA

## Bushings - Square Hole



4140 Alloy Steel - Hardened (Rc 40-43).

### Bushings - Square Hole

Part Number	Nominal Square Bore Size (A) mm	Outside Diameter (OD) mm	Length (L) mm	Flange Diameter (FD) mm	Flange Width (W) mm
	<i>inches</i>	<i>inches</i>	<i>inches</i>	<i>inches</i>	<i>inches</i>
# BSQ-04.76x09.53x19.05	4.763 <i>0.188</i>	9.525 <i>0.375</i>	19.050 <i>0.750</i>	12.7 <i>0.500</i>	1.6 <i>0.063</i>
# BSQ-06.35x11.89x25.40	6.350 <i>0.250</i>	11.887 <i>0.468</i>	25.400 <i>1.000</i>	14.3 <i>0.563</i>	1.6 <i>0.063</i>
# BSQ-07.94x14.28x25.40	7.938 <i>0.313</i>	14.275 <i>0.562</i>	25.400 <i>1.000</i>	17.475 <i>0.688</i>	1.6 <i>0.063</i>
# BSQ-09.53x16.66x25.40	9.525 <i>0.375</i>	16.662 <i>0.656</i>	25.400 <i>1.000</i>	19.05 <i>0.750</i>	1.6 <i>0.063</i>

# Indicates item not stocked at time of printing - Please enquire for lead time  
 E&OE Pricing and all details subject to change without notice - Copyright Miniature Bearings Australia Pty Ltd  
 MBA Size Listings are a guide to sizes only and must not be solely relied on for critical design information.

## Bushings - Square Hole

Part Number	Nominal Square Bore Size (A) mm	Outside Diameter (OD) mm	Length (L) mm	Flange Diameter (FD) mm	Flange Width (W) mm
	<i>inches</i>	<i>inches</i>	<i>inches</i>	<i>inches</i>	<i>inches</i>
# BSQ-11.11x19.05x31.75	11.110 <i>0.437</i>	19.050 <i>0.750</i>	31.750 <i>1.250</i>	22.225 <i>0.875</i>	1.6 <i>0.063</i>
# BSQ-12.70x20.63x31.75	12.700 <i>0.500</i>	20.625 <i>0.812</i>	31.750 <i>1.250</i>	22.225 <i>0.875</i>	1.6 <i>0.063</i>
BSQ-15.88x25.40x38.10	15.875 <i>0.625</i>	25.400 <i>1.000</i>	38.100 <i>1.500</i>	28.575 <i>1.125</i>	1.6 <i>0.063</i>
# BSQ-19.05x30.15x38.10	19.050 <i>0.750</i>	30.150 <i>1.187</i>	38.100 <i>1.500</i>	34.925 <i>1.375</i>	3.175 <i>0.125</i>
# BSQ-22.23x34.93x44.45	22.225 <i>0.875</i>	34.925 <i>1.375</i>	44.450 <i>1.750</i>	38.1 <i>1.500</i>	3.175 <i>0.125</i>
# BSQ-25.40x39.68x50.80	25.400 <i>1.000</i>	39.675 <i>1.562</i>	50.800 <i>2.000</i>	41.275 <i>1.625</i>	3.175 <i>0.125</i>
# BSQ-28.58x44.45x50.80	28.575 <i>1.125</i>	44.450 <i>1.750</i>	50.800 <i>2.000</i>	47.625 <i>1.875</i>	3.175 <i>0.125</i>
# BSQ-30.16x46.03x50.80	30.163 <i>1.188</i>	46.025 <i>1.812</i>	50.800 <i>2.000</i>	50.8 <i>2.000</i>	3.175 <i>0.125</i>
# BSQ-31.75x50.80x50.80	31.750 <i>1.250</i>	50.800 <i>2.000</i>	50.800 <i>2.000</i>	53.975 <i>2.125</i>	3.175 <i>0.125</i>

# Indicates item not stocked at time of printing - Please enquire for lead time

E&OE Pricing and all details subject to change without notice - Copyright Miniature Bearings Australia Pty Ltd

MBA Size Listings are a guide to sizes only and must not be solely relied on for critical design information.



DISTRIBUTED BY

Ask us to put your name and address here

<http://www.minibearings.com.au/product>

Ph +61 7 3245 7977

Fax +61 7 3245 1017

Catalogue requests to [catalogues@minibearings.com.au](mailto:catalogues@minibearings.com.au)

