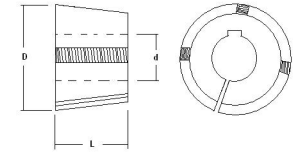




MBA

Bushings - Taperlock



Bushings - Taperlock

Part Number	Diameter Large End (D) mm <i>inches</i>	Length (L) mm <i>inches</i>	Shaft Size (d) mm <i>inches</i>	Number of Screws	Screw Size mm <i>inches</i>	Wrench Torque Nm
TLB1610x24mm	57.150 <i>2.250</i>	25.400 <i>1.000</i>	24.000 <i>0.945</i>	2	3/8 UNC	20
TLB1610x28mm	57.150 <i>2.250</i>	25.400 <i>1.000</i>	28.000 <i>1.102</i>	2	3/8 UNC	20
TLB2012x24mm	69.850 <i>2.750</i>	31.750 <i>1.250</i>	24.000 <i>0.945</i>	2	7/16 UNC	31

Indicates item not stocked at time of printing - Please enquire for lead time

E&OE Pricing and all details subject to change without notice - Copyright Miniature Bearings Australia Pty Ltd

MBA Size Listings are a guide to sizes only and must not be solely relied on for critical design information.



DISTRIBUTED BY

Ask us to put your name and address here

<http://www.minibearings.com.au/product>

Ph +61 7 3245 7977

Fax +61 7 3245 1017

Catalogue requests to catalogues@minibearings.com.au

