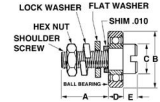




# MBA

## Cam Followers - Miniature - Standard



Stainless steel ball type cam followers.

### Cam Followers - Miniature - Standard

Part Number	Outside Diameter (B) mm	Length (A+D+E) mm	Thread Length (A) mm	Material (Bearing)	Material (Screw)	Thread Size	Height of Screw Head (E) mm	Bearing Width (D) mm
	<i>inches</i>	<i>inches</i>	<i>inches</i>				<i>inches</i>	<i>inches</i>
# CF-06.35x03.58x11.51-440	6.35	11.51	7.14	440C Stainless steel	303 Stainless steel	#4-40	1.59	2.779
	<i>0.250</i>	<i>0.453</i>	<i>0.281</i>				<i>0.063</i>	<i>0.109</i>
# CF-06.35x03.58x12.31-440	6.35	12.31	6.35	440C Stainless steel	303 Stainless steel	1-64	2.38	3.581
	<i>0.250</i>	<i>0.485</i>	<i>0.250</i>				<i>0.094</i>	<i>0.141</i>
# CF-06.35x02.77x12.29-440	6.35	12.29	6.35	440C Stainless steel	303 Stainless steel	4-40	3.18	2.769
	<i>0.250</i>	<i>0.484</i>	<i>0.250</i>				<i>0.125</i>	<i>0.109</i>
# CF-07.94x02.77x11.11-440	7.94	11.11	5.95	440C Stainless steel	303 Stainless steel	#2-56	1.59	3.571
	<i>0.313</i>	<i>0.437</i>	<i>0.234</i>				<i>0.063</i>	<i>0.141</i>

# Indicates item not stocked at time of printing - Please enquire for lead time

E&OE Pricing and all details subject to change without notice - Copyright Miniature Bearings Australia Pty Ltd

MBA Size Listings are a guide to sizes only and must not be solely relied on for critical design information.

## Cam Followers - Miniature - Standard

Part Number	Outside Diameter (B) mm	Length (A+D+E) mm	Thread Length (A) mm	Material (Bearing)	Material (Screw)	Thread Size	Height of Screw Head (E) mm	Bearing Width (D) mm
	<i>inches</i>	<i>inches</i>	<i>inches</i>				<i>inches</i>	<i>inches</i>
# CF-07.94x03.58x11.11-440	7.94 <i>0.313</i>	11.11 <i>0.437</i>	5.95 <i>0.234</i>	440C Stainless steel	303 Stainless steel	2-56	1.59 <i>0.063</i>	3.571 <i>0.141</i>
# CF-07.94x03.58x12.30-440	7.94 <i>0.313</i>	12.30 <i>0.484</i>	6.35 <i>0.250</i>	440C Stainless steel	303 Stainless steel	2-56	2.38 <i>0.094</i>	3.571 <i>0.141</i>
# CF-07.94x03.58x14.69-440	7.94 <i>0.313</i>	14.69 <i>0.578</i>	7.94 <i>0.313</i>	440C Stainless steel	303 Stainless steel	2-56	3.18 <i>0.125</i>	3.571 <i>0.141</i>
# CF-08.00x04.00x11.50-440	8.00 <i>0.315</i>	11.50 <i>0.453</i>	6.00 <i>0.236</i>	440C Stainless steel	303 Stainless steel	M2x0.4	1.50 <i>0.059</i>	4.000 <i>0.157</i>
# CF-09.53x03.96x13.49-440	9.53 <i>0.375</i>	13.49 <i>0.531</i>	7.94 <i>0.313</i>	440C Stainless steel	303 Stainless steel	4-40	1.59 <i>0.063</i>	3.967 <i>0.156</i>
# CF-09.53x03.96x15.08-440	9.53 <i>0.375</i>	15.08 <i>0.594</i>	7.94 <i>0.313</i>	440C Stainless steel	303 Stainless steel	4-40	3.18 <i>0.125</i>	3.967 <i>0.156</i>
# CF-10.00x04.00x13.50-440	10.00 <i>0.394</i>	13.50 <i>0.531</i>	8.00 <i>0.315</i>	440C Stainless steel	303 Stainless steel	M3x0.5	1.50 <i>0.059</i>	4.000 <i>0.157</i>
# CF-12.70x04.98x17.28-440	12.70 <i>0.500</i>	17.28 <i>0.680</i>	10.72 <i>0.422</i>	440C Stainless steel	303 Stainless steel	8-32	1.59 <i>0.063</i>	4.978 <i>0.196</i>

# Indicates item not stocked at time of printing - Please enquire for lead time

E&OE Pricing and all details subject to change without notice - Copyright Miniature Bearings Australia Pty Ltd

MBA Size Listings are a guide to sizes only and must not be solely relied on for critical design information.

## Cam Followers - Miniature - Standard

Part Number	Outside Diameter (B) mm	Length (A+D+E) mm	Thread Length (A) mm	Material (Bearing)	Material (Screw)	Thread Size	Height of Screw Head (E) mm	Bearing Width (D) mm
	<i>inches</i>	<i>inches</i>	<i>inches</i>				<i>inches</i>	<i>inches</i>
# CF-12.70x04.98x18.47-440	12.70	18.47	9.53	440C Stainless steel	303 Stainless steel	8-32	3.97	4.978
	<i>0.500</i>	<i>0.727</i>	<i>0.375</i>				<i>0.156</i>	<i>0.196</i>
# CF-13.00x05.00x14.50-440	13.00	14.50	8.00	440C Stainless steel	303 Stainless steel	M3x0.5	1.50	5.000
	<i>0.512</i>	<i>0.571</i>	<i>0.315</i>				<i>0.059</i>	<i>0.197</i>
# CF-13.00x05.00x18.50-440	13.00	18.50	12.00	440C Stainless steel	303 Stainless steel	M5x0.8	1.50	5.000
	<i>0.512</i>	<i>0.728</i>	<i>0.472</i>				<i>0.059</i>	<i>0.197</i>
# CF-15.88x04.98x19.26-440	15.88	19.27	12.70	440C Stainless steel	303 Stainless steel	10-32	1.59	4.978
	<i>0.625</i>	<i>0.759</i>	<i>0.500</i>				<i>0.063</i>	<i>0.196</i>
# CF-15.88x04.98x21.65-440	15.88	21.65	12.70	440C Stainless steel	303 Stainless steel	10-32	3.97	4.978
	<i>0.625</i>	<i>0.852</i>	<i>0.500</i>				<i>0.156</i>	<i>0.196</i>
CF-16.00x05.00x22.50-440	16.00	22.50	16.00	440C Stainless steel	303 Stainless steel	M6x1.0	1.50	5.000
	<i>0.630</i>	<i>0.886</i>	<i>0.630</i>				<i>0.059</i>	<i>0.197</i>
CF-22.23x07.14x25.80-440	22.23	25.80	17.07	440C Stainless steel	303 Stainless steel	1/4-20	1.59	7.142
	<i>0.875</i>	<i>1.016</i>	<i>0.672</i>				<i>0.063</i>	<i>0.281</i>

# Indicates item not stocked at time of printing - Please enquire for lead time

E&OE Pricing and all details subject to change without notice - Copyright Miniature Bearings Australia Pty Ltd

MBA Size Listings are a guide to sizes only and must not be solely relied on for critical design information.



DISTRIBUTED BY

Ask us to put your name and address here

<http://www.minibearings.com.au/product>

Ph +61 7 3245 7977

Fax +61 7 3245 1017

Catalogue requests to [catalogues@minibearings.com.au](mailto:catalogues@minibearings.com.au)

