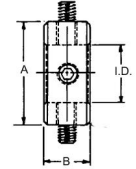




MBA

Clamps - Gear - Screw Type



Commercial - Precision - Stainless - Aluminium - Carbon Steel - For clamp type gears.

Precision Type : Height and Clearance Radii Tolerances +/- 0.397.

Precision Type : All other dimensional tolerances except ID +/-0.127.

Commercial Type : Height and Clearance Radii Tolerances +/- 0.794.

Commercial Type : All other dimensional tolerances except ID +/-0.254.

ID Tolerances - Refer to table.

Clamps - Gear - Screw Type

Part Number	Inside Diameter (ID) mm	Clearance Radius mm	Depth (B) mm	ID Tolerances mm	Type	Grade	Material	Screw Size mm	Height (A) mm	Width (D) mm
	<i>inches</i>	<i>inches</i>	<i>inches</i>	<i>inches</i>				<i>inches</i>	<i>inches</i>	<i>inches</i>
# CGW-0253-SCP-3	2.527	3.963	3.175	+0.025 / - 0.000	Screw Type	Precision / Not Balanced	303 Stainless	2-56	7.925	7.925
	<i>0.099</i>	<i>0.156</i>	<i>0.125</i>						<i>0.312</i>	<i>0.312</i>
# CGW-0253-SCC-3	2.527	3.963	3.175	+0.051 / - 0.000	Screw Type	Commercial / Not Balanced	303 Stainless	2-56	7.925	7.925
	<i>0.099</i>	<i>0.156</i>	<i>0.125</i>						<i>0.312</i>	<i>0.312</i>

Indicates item not stocked at time of printing - Please enquire for lead time

E&OE Pricing and all details subject to change without notice - Copyright Miniature Bearings Australia Pty Ltd

MBA Size Listings are a guide to sizes only and must not be solely relied on for critical design information.

Clamps - Gear - Screw Type

Part Number	Inside Diameter (ID) mm	Clearance Radius mm	Depth (B) mm	ID Tolerances mm	Type	Grade	Material	Screw Size mm	Height (A) mm	Width (D) mm
	<i>inches</i>	<i>inches</i>	<i>inches</i>	<i>inches</i>				<i>inches</i>	<i>inches</i>	<i>inches</i>
# CGW-0318-SCC-A	3.175	4.763	6.350	+0.051 / - 0.000	Screw Type	Commercial / Not Balanced	2024-T351 Aluminium	4-40	9.525	9.525
	<i>0.125</i>	<i>0.188</i>	<i>0.250</i>						<i>0.375</i>	<i>0.375</i>
# CGW-0318-SCP-A	3.175	4.763	6.350	+0.025 / - 0.000	Screw Type	Precision / Not Balanced	2024-T351 Aluminium	4-40	9.525	9.525
	<i>0.125</i>	<i>0.188</i>	<i>0.250</i>						<i>0.375</i>	<i>0.375</i>
# CGW-0318-SCC-3	3.175	4.763	6.350	+0.051 / - 0.000	Screw Type	Commercial / Not Balanced	303 Stainless	4-40	9.525	9.525
	<i>0.125</i>	<i>0.188</i>	<i>0.250</i>						<i>0.375</i>	<i>0.375</i>
# CGW-0318-SCP-3	3.175	4.763	6.350	+0.025 / - 0.000	Screw Type	Precision / Not Balanced	303 Stainless	4-40	9.525	9.525
	<i>0.125</i>	<i>0.188</i>	<i>0.250</i>						<i>0.375</i>	<i>0.375</i>
# CGW-0476-SCC-3	4.763	4.763	6.350	+0.051 / - 0.000	Screw Type	Commercial / Not Balanced	303 Stainless	4-40	9.525	9.525
	<i>0.188</i>	<i>0.188</i>	<i>0.250</i>						<i>0.375</i>	<i>0.375</i>
# CGW-0476-SCC-A	4.763	4.763	6.350	+0.051 / - 0.000	Screw Type	Commercial / Not Balanced	2024-T351 Aluminium	4-40	9.525	9.525
	<i>0.188</i>	<i>0.188</i>	<i>0.250</i>						<i>0.375</i>	<i>0.375</i>
# CGW-0476-SCP-A	4.763	4.763	6.350	+0.025 / - 0.000	Screw Type	Precision / Not Balanced	2024-T351 Aluminium	4-40	9.525	9.525
	<i>0.188</i>	<i>0.188</i>	<i>0.250</i>						<i>0.375</i>	<i>0.375</i>
# CGW-0476-SCP-3	4.763	4.763	6.350	+0.025 / - 0.000	Screw Type	Precision / Not Balanced	303 Stainless	4-40	9.525	9.525
	<i>0.188</i>	<i>0.188</i>	<i>0.250</i>						<i>0.375</i>	<i>0.375</i>

Indicates item not stocked at time of printing - Please enquire for lead time

E&OE Pricing and all details subject to change without notice - Copyright Miniature Bearings Australia Pty Ltd

MBA Size Listings are a guide to sizes only and must not be solely relied on for critical design information.

Clamps - Gear - Screw Type

Part Number	Inside Diameter (ID) mm	Clearance Radius mm	Depth (B) mm	ID Tolerances mm	Type	Grade	Material	Screw Size mm	Height (A) mm	Width (D) mm
	<i>inches</i>	<i>inches</i>	<i>inches</i>	<i>inches</i>				<i>inches</i>	<i>inches</i>	<i>inches</i>
# CGW-0635-SCP-A	6.350	6.350	6.350	+0.025 / - 0.000	Screw Type	Precision / Not Balanced	2024-T351 Aluminium	6-32	12.700	12.700
	<i>0.250</i>	<i>0.250</i>	<i>0.250</i>						<i>0.500</i>	<i>0.500</i>
# CGW-0635-SCP-3	6.350	6.350	6.350	+0.025 / - 0.000	Screw Type	Precision / Not Balanced	303 Stainless	6-32	12.700	12.700
	<i>0.250</i>	<i>0.250</i>	<i>0.250</i>						<i>0.500</i>	<i>0.500</i>
# CGW-0635-SCC-3	6.350	6.350	6.350	+0.051 / - 0.000	Screw Type	Commercial / Not Balanced	303 Stainless	6-32	12.700	12.700
	<i>0.250</i>	<i>0.250</i>	<i>0.250</i>						<i>0.500</i>	<i>0.500</i>
# CGW-0635-SCC-A	6.350	6.350	6.350	+0.051 / - 0.000	Screw Type	Commercial / Not Balanced	2024-T351 Aluminium	6-32	12.700	12.700
	<i>0.250</i>	<i>0.250</i>	<i>0.250</i>						<i>0.500</i>	<i>0.500</i>
# CGW-0794-SCP-A	7.938	6.350	6.350	+0.025 / - 0.000	Screw Type	Precision / Not Balanced	2024-T351 Aluminium	6-32	12.700	12.700
	<i>0.313</i>	<i>0.250</i>	<i>0.250</i>						<i>0.500</i>	<i>0.500</i>
CGW-0794-SCC-3	7.938	6.350	6.350	+0.051 / - 0.000	Screw Type	Commercial / Not Balanced	303 Stainless	6-32	12.700	12.700
	<i>0.313</i>	<i>0.250</i>	<i>0.250</i>						<i>0.500</i>	<i>0.500</i>
# CGW-0794-SCC-A	7.938	6.350	6.350	+0.051 / - 0.000	Screw Type	Commercial / Not Balanced	2024-T351 Aluminium	6-32	12.700	12.700
	<i>0.313</i>	<i>0.250</i>	<i>0.250</i>						<i>0.500</i>	<i>0.500</i>
# CGW-0794-SCP-3	7.938	6.350	6.350	+0.025 / - 0.000	Screw Type	Precision / Not Balanced	303 Stainless	6-32	12.700	12.700
	<i>0.313</i>	<i>0.250</i>	<i>0.250</i>						<i>0.500</i>	<i>0.500</i>

Indicates item not stocked at time of printing - Please enquire for lead time

E&OE Pricing and all details subject to change without notice - Copyright Miniature Bearings Australia Pty Ltd

MBA Size Listings are a guide to sizes only and must not be solely relied on for critical design information.



DISTRIBUTED BY

Ask us to put your name and address here

<http://www.minibearings.com.au/product>

Ph +61 7 3245 7977

Fax +61 7 3245 1017

Catalogue requests to catalogues@minibearings.com.au

