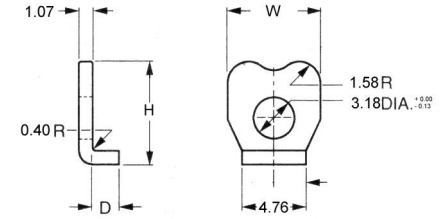




MBA

Clamps - Syncro - Mounting - Type 8



Clamps - Syncro - Mounting - Type 8

Part Number	Base Length (D) mm <i>inches</i>	Height (H) mm <i>inches</i>	Width (W) mm <i>inches</i>	Material
# CSM8-119-8-C	1.19 <i>0.047</i>	7.92 <i>0.312</i>	1.07 <i>0.042</i>	Cadmium Plated Carbon Steel
# CSM8-119-8-2	1.19 <i>0.047</i>	7.92 <i>0.312</i>	1.07 <i>0.042</i>	302 Stainless
# CSM8-157-4-3BO	1.57 <i>0.062</i>	4.37 <i>0.172</i>	0.79 <i>0.031</i>	Black Oxide 300 Grade Stainless
# CSM8-198-8-C	1.98 <i>0.078</i>	7.92 <i>0.312</i>	1.07 <i>0.042</i>	Cadmium Plated Carbon Steel
# CSM8-198-8-2	1.98 <i>0.078</i>	7.92 <i>0.312</i>	1.07 <i>0.042</i>	302 Stainless

Indicates item not stocked at time of printing - Please enquire for lead time

E&OE Pricing and all details subject to change without notice - Copyright Miniature Bearings Australia Pty Ltd

MBA Size Listings are a guide to sizes only and must not be solely relied on for critical design information.

Clamps - Syncro - Mounting - Type 8

Part Number	Base Length (D) mm <i>inches</i>	Height (H) mm <i>inches</i>	Width (W) mm <i>inches</i>	Material
# CSM8-236-4-3BO	2.36 <i>0.093</i>	4.37 <i>0.172</i>	0.79 <i>0.031</i>	Black Oxide 300 Grade Stainless
# CSM8-279-8-C	2.79 <i>0.110</i>	7.92 <i>0.312</i>	1.07 <i>0.042</i>	Cadmium Plated Carbon Steel
# CSM8-279-8-2	2.79 <i>0.110</i>	7.92 <i>0.312</i>	1.07 <i>0.042</i>	302 Stainless
# CSM8-358-8-C	3.58 <i>0.141</i>	7.92 <i>0.312</i>	1.07 <i>0.042</i>	Cadmium Plated Carbon Steel
# CSM8-358-8-2	3.58 <i>0.141</i>	7.92 <i>0.312</i>	1.07 <i>0.042</i>	302 Stainless
# CSM8-648-4-2	6.48 <i>0.255</i>	4.37 <i>0.172</i>	0.79 <i>0.031</i>	300 Grade Stainless
# CSM8-000-8-C	Flat	7.92 <i>0.312</i>	1.07 <i>0.042</i>	Cadmium Plated Carbon Steel
# CSM8-000-8-2	Flat	7.92 <i>0.312</i>	1.07 <i>0.042</i>	302 Stainless

Indicates item not stocked at time of printing - Please enquire for lead time

E&OE Pricing and all details subject to change without notice - Copyright Miniature Bearings Australia Pty Ltd

MBA Size Listings are a guide to sizes only and must not be solely relied on for critical design information.



DISTRIBUTED BY

Ask us to put your name and address here

<http://www.minibearings.com.au/product>

Ph +61 7 3245 7977

Fax +61 7 3245 1017

Catalogue requests to catalogues@minibearings.com.au

