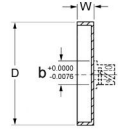




MBA

Dials - Drum - Precision



Use with drum dial indexes.

Precision Engraved.

Use with HUBS - Gear and Dial.

2024 Aluminium Black Anodized. Engraving filled with white enamel.

Dials - Drum - Precision

Part Number	Outside Diameter (D) mm <i>inches</i>	Bore Size (b) mm <i>inches</i>	No. of Graduations	Steps in Degrees	Dial Range Deg.	Width of Drum (w) mm <i>inches</i>	Marking Direction
# DRUM-025-100-CW-10.00	25.000 <i>0.984</i>	10.000 <i>0.394</i>	100	3 Deg. 36 Min.	0-100	10.000 <i>0.394</i>	Clockwise
# DRUM-025-180-CW-10.00	25.000 <i>0.984</i>	10.000 <i>0.394</i>	180	2 Deg.	0-360	10.000 <i>0.394</i>	Clockwise
# DRUM-025-000-CW-10.00	25.000 <i>0.984</i>	10.000 <i>0.394</i>	N/A	N/A	N/A	10.000 <i>0.394</i>	Clockwise
# DRUM-025-100-CW-09.53	25.146 <i>0.990</i>	9.525 <i>0.375</i>	100	3 Deg. 36 Min.	0-100	9.525 <i>0.375</i>	Clockwise

Indicates item not stocked at time of printing - Please enquire for lead time

E&OE Pricing and all details subject to change without notice - Copyright Miniature Bearings Australia Pty Ltd

MBA Size Listings are a guide to sizes only and must not be solely relied on for critical design information.

Dials - Drum - Precision

Part Number	Outside Diameter (D) mm	Bore Size (b) mm	No. of Graduations	Steps in Degrees	Dial Range Deg.	Width of Drum (w) mm	Marking Direction
	<i>inches</i>	<i>inches</i>				<i>inches</i>	
# DRUM-025-180-CW-09.53	25.146 <i>0.990</i>	9.525 <i>0.375</i>	180	2 Deg.	0-360	9.525 <i>0.375</i>	Clockwise
# DRUM-025-000-CW-09.53	25.146 <i>0.990</i>	9.525 <i>0.375</i>	N/A	N/A	N/A	9.525 <i>0.375</i>	Clockwise
# DRUM-038-060-CW-09.53	37.846 <i>1.490</i>	9.525 <i>0.375</i>	60	6 Deg.	0-60	9.525 <i>0.375</i>	Clockwise
# DRUM-038-100-CW-09.53	37.846 <i>1.490</i>	9.525 <i>0.375</i>	100	3 Deg. 36 Min.	0-100	9.525 <i>0.375</i>	Clockwise
# DRUM-038-180-CW-09.53	37.846 <i>1.490</i>	9.525 <i>0.375</i>	180	2 Deg.	0-360	9.525 <i>0.375</i>	Clockwise
# DRUM-038-000-CW-09.53	37.846 <i>1.490</i>	9.525 <i>0.375</i>	N/A	N/A	N/A	9.525 <i>0.375</i>	Clockwise
# DRUM-038-060-CW-10.00	38.000 <i>1.496</i>	10.000 <i>0.394</i>	60	6 Deg.	0-60	10.000 <i>0.394</i>	Clockwise
# DRUM-038-100-CW-10.00	38.000 <i>1.496</i>	10.000 <i>0.394</i>	100	3 Deg. 36 Min.	0-100	10.000 <i>0.394</i>	Clockwise
# DRUM-038-180-CW-10.00	38.000 <i>1.496</i>	10.000 <i>0.394</i>	180	2 Deg.	0-360	10.000 <i>0.394</i>	Clockwise
# DRUM-038-000-CW-10.00	38.000 <i>1.496</i>	10.000 <i>0.394</i>	N/A	N/A	N/A	10.000 <i>0.394</i>	Clockwise

Indicates item not stocked at time of printing - Please enquire for lead time

E&OE Pricing and all details subject to change without notice - Copyright Miniature Bearings Australia Pty Ltd

MBA Size Listings are a guide to sizes only and must not be solely relied on for critical design information.

Dials - Drum - Precision

Part Number	Outside Diameter (D) mm	Bore Size (b) mm	No. of Graduations	Steps in Degrees	Dial Range Deg.	Width of Drum (w) mm	Marking Direction
	<i>inches</i>	<i>inches</i>				<i>inches</i>	
# DRUM-051-010-CW-10.00	50.500 <i>1.988</i>	10.000 <i>0.394</i>	10	36 Deg.	0-10	10.000 <i>0.394</i>	Clockwise
# DRUM-051-025-CW-10.00	50.500 <i>1.988</i>	10.000 <i>0.394</i>	25	14 Deg. 24 Min.	0-25	10.000 <i>0.394</i>	Clockwise
# DRUM-051-050-CW-10.00	50.500 <i>1.988</i>	10.000 <i>0.394</i>	50	7 Deg. 12 Min.	0-50	10.000 <i>0.394</i>	Clockwise
# DRUM-051-180-CW-10.00	50.500 <i>1.988</i>	10.000 <i>0.394</i>	180	2 Deg.	0-360	10.000 <i>0.394</i>	Clockwise
# DRUM-051-180B-CW-10.00	50.500 <i>1.988</i>	10.000 <i>0.394</i>	180	2 Deg.	0-180	10.000 <i>0.394</i>	Clockwise
# DRUM-051-000-CW-10.00	50.500 <i>1.988</i>	10.000 <i>0.394</i>	N/A	N/A	N/A	10.000 <i>0.394</i>	Clockwise
# DRUM-051-010-CW-09.53	50.546 <i>1.990</i>	9.525 <i>0.375</i>	10	36 Deg.	0-10	9.525 <i>0.375</i>	Clockwise
# DRUM-051-025-CW-09.53	50.546 <i>1.990</i>	9.525 <i>0.375</i>	25	14 Deg. 24 Min.	0-25	9.525 <i>0.375</i>	Clockwise
# DRUM-051-050-CW-09.53	50.546 <i>1.990</i>	9.525 <i>0.375</i>	50	7 Deg. 12 Min.	0-50	9.525 <i>0.375</i>	Clockwise
# DRUM-051-180B-CW-09.53	50.546 <i>1.990</i>	9.525 <i>0.375</i>	180	2 Deg.	0-180	9.525 <i>0.375</i>	Clockwise

Indicates item not stocked at time of printing - Please enquire for lead time

E&OE Pricing and all details subject to change without notice - Copyright Miniature Bearings Australia Pty Ltd

MBA Size Listings are a guide to sizes only and must not be solely relied on for critical design information.

Dials - Drum - Precision

Part Number	Outside Diameter (D) mm	Bore Size (b) mm	No. of Graduations	Steps in Degrees	Dial Range Deg.	Width of Drum (w) mm	Marking Direction
	<i>inches</i>	<i>inches</i>				<i>inches</i>	
# DRUM-051-180-CW-09.53	50.546 <i>1.990</i>	9.525 <i>0.375</i>	180	2 Deg.	0-360	9.525 <i>0.375</i>	Clockwise
# DRUM-051-000-CW-09.53	50.546 <i>1.990</i>	9.525 <i>0.375</i>	N/A	N/A	N/A	9.525 <i>0.375</i>	Clockwise
# DRUM-063-100-CW-10.00	63.000 <i>2.480</i>	10.000 <i>0.394</i>	100	3 Deg. 36 Min.	0-100	12.500 <i>0.492</i>	Clockwise
# DRUM-063-180-CW-10.00	63.000 <i>2.480</i>	10.000 <i>0.394</i>	180	2 Deg.	0-180	12.500 <i>0.492</i>	Clockwise
# DRUM-063-180-CCW-10.00	63.000 <i>2.480</i>	10.000 <i>0.394</i>	180	2 Deg.	0-360	12.500 <i>0.492</i>	Counter Clockwise
# DRUM-063-200-CW-10.00	63.000 <i>2.480</i>	10.000 <i>0.394</i>	200	1 Deg. 48 Min.	0-200	12.500 <i>0.492</i>	Clockwise
# DRUM-063-360-CW-10.00	63.000 <i>2.480</i>	10.000 <i>0.394</i>	360	1 Deg.	0-360	12.500 <i>0.492</i>	Clockwise
# DRUM-063-000-CW-10.00	63.000 <i>2.480</i>	10.000 <i>0.394</i>	N/A	N/A	N/A	12.500 <i>0.492</i>	Clockwise
# DRUM-063-100-CW-09.53	63.246 <i>2.490</i>	9.525 <i>0.375</i>	100	3 Deg. 36 Min.	0-100	12.700 <i>0.500</i>	Clockwise
# DRUM-063-180-CCW-09.53	63.246 <i>2.490</i>	9.525 <i>0.375</i>	180	2 Deg.	0-360	5.080 <i>0.200</i>	Counter Clockwise

Indicates item not stocked at time of printing - Please enquire for lead time

E&OE Pricing and all details subject to change without notice - Copyright Miniature Bearings Australia Pty Ltd

MBA Size Listings are a guide to sizes only and must not be solely relied on for critical design information.

Dials - Drum - Precision

Part Number	Outside Diameter (D) mm	Bore Size (b) mm	No. of Graduations	Steps in Degrees	Dial Range Deg.	Width of Drum (w) mm	Marking Direction
	<i>inches</i>	<i>inches</i>				<i>inches</i>	
# DRUM-063-180-CW-09.53	63.246 <i>2.490</i>	9.525 <i>0.375</i>	180	2 Deg.	0-180	12.700 <i>0.500</i>	Clockwise
# DRUM-063-200-CW-09.53	63.246 <i>2.490</i>	9.525 <i>0.375</i>	200	1 Deg. 48 Min.	0-200	12.700 <i>0.500</i>	Clockwise
# DRUM-063-360-CCW-09.53	63.246 <i>2.490</i>	9.525 <i>0.375</i>	360	1 Deg.	0-360	6.350 <i>0.250</i>	Counter Clockwise
# DRUM-063-360-CW-09.53	63.246 <i>2.490</i>	9.525 <i>0.375</i>	360	1 Deg.	0-360	12.700 <i>0.500</i>	Clockwise
# DRUM-063-000-CW-09.53	63.246 <i>2.490</i>	9.525 <i>0.375</i>	N/A	N/A	N/A	12.700 <i>0.500</i>	Clockwise
# DRUM-076-010-CW-09.53	75.946 <i>2.990</i>	9.525 <i>0.375</i>	10	36 Deg.	0-10	12.700 <i>0.500</i>	Clockwise
# DRUM-076-100-CW-09.53	75.946 <i>2.990</i>	9.525 <i>0.375</i>	100	3 Deg. 36 Min.	0-100	12.700 <i>0.500</i>	Clockwise
# DRUM-076-180-CW-09.53	75.946 <i>2.990</i>	9.525 <i>0.375</i>	180	2 Deg.	0-360	12.700 <i>0.500</i>	Clockwise
# DRUM-076-180B-CW-09.53	75.946 <i>2.990</i>	9.525 <i>0.375</i>	180	2 Deg.	0-180	12.700 <i>0.500</i>	Clockwise
# DRUM-076-180-CCW-09.53	75.946 <i>2.990</i>	9.525 <i>0.375</i>	180	2 Deg.	0-360	8.467 <i>0.333</i>	Counter Clockwise

Indicates item not stocked at time of printing - Please enquire for lead time

E&OE Pricing and all details subject to change without notice - Copyright Miniature Bearings Australia Pty Ltd

MBA Size Listings are a guide to sizes only and must not be solely relied on for critical design information.

Dials - Drum - Precision

Part Number	Outside Diameter (D) mm	Bore Size (b) mm	No. of Graduations	Steps in Degrees	Dial Range Deg.	Width of Drum (w) mm	Marking Direction
	<i>inches</i>	<i>inches</i>				<i>inches</i>	
# DRUM-076-360-CW-09.53	75.946 <i>2.990</i>	9.525 <i>0.375</i>	360	1 Deg.	0-360	12.700 <i>0.500</i>	Clockwise
# DRUM-076-360-CCW-09.53	75.946 <i>2.990</i>	9.525 <i>0.375</i>	360	1 Deg.	0-360	12.700 <i>0.500</i>	Counter Clockwise
# DRUM-076-000-CW-09.53	75.946 <i>2.990</i>	9.525 <i>0.375</i>	N/A	N/A	N/A	12.700 <i>0.500</i>	Clockwise
# DRUM-076-010-CW-10.00	76.000 <i>2.992</i>	10.000 <i>0.394</i>	10	36 Deg.	0-10	12.500 <i>0.492</i>	Clockwise
# DRUM-076-100-CW-10.00	76.000 <i>2.992</i>	10.000 <i>0.394</i>	100	3 Deg. 36 Min.	0-100	12.500 <i>0.492</i>	Clockwise
# DRUM-076-180B-CW-10.00	76.000 <i>2.992</i>	10.000 <i>0.394</i>	180	2 Deg.	0-180	12.500 <i>0.492</i>	Clockwise
# DRUM-076-180-CCW-10.00	76.000 <i>2.992</i>	10.000 <i>0.394</i>	180	2 Deg.	0-360	12.500 <i>0.492</i>	Counter Clockwise
# DRUM-076-180-CW-10.00	76.000 <i>2.992</i>	10.000 <i>0.394</i>	180	2 Deg.	0-360	12.500 <i>0.492</i>	Clockwise
# DRUM-076-360-CCW-10.00	76.000 <i>2.992</i>	10.000 <i>0.394</i>	360	1 Deg.	0-360	12.500 <i>0.492</i>	Counter Clockwise
# DRUM-076-360-CW-10.00	76.000 <i>2.992</i>	10.000 <i>0.394</i>	360	1 Deg.	0-360	12.500 <i>0.492</i>	Clockwise

Indicates item not stocked at time of printing - Please enquire for lead time

E&OE Pricing and all details subject to change without notice - Copyright Miniature Bearings Australia Pty Ltd

MBA Size Listings are a guide to sizes only and must not be solely relied on for critical design information.

Dials - Drum - Precision

Part Number	Outside Diameter (D) mm	Bore Size (b) mm	No. of Graduations	Steps in Degrees	Dial Range Deg.	Width of Drum (w) mm	Marking Direction
	<i>inches</i>	<i>inches</i>				<i>inches</i>	
# DRUM-076-000-CW-10.00	76.000 <i>2.992</i>	10.000 <i>0.394</i>	N/A	N/A	N/A	12.500 <i>0.492</i>	Clockwise

Indicates item not stocked at time of printing - Please enquire for lead time

E&OE Pricing and all details subject to change without notice - Copyright Miniature Bearings Australia Pty Ltd

MBA Size Listings are a guide to sizes only and must not be solely relied on for critical design information.



DISTRIBUTED BY

Ask us to put your name and address here

<http://www.minibearings.com.au/product>

Ph +61 7 3245 7977

Fax +61 7 3245 1017

Catalogue requests to catalogues@minibearings.com.au
