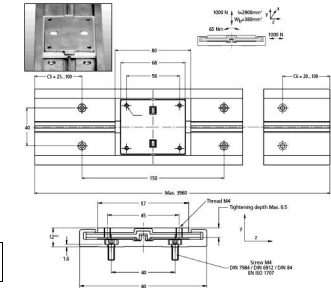




MBA

Drylin - Linear - Slides and Carriages - Size 80



Linear sliding motion.

Guide Rail Weight: 1140 g/m.

Carriage Weight: 100g.

Max Rail Length: 2000 mm.

Standard Bore Scheme: Symmetrical C5 = C6.

Particularly insensitive to dust, dirt and water.

This catalogue to be read in conjunction with information at http://www.minibearings.com.au/ogue/tech/linear/drylin_n_tech.pdf

Drylin - Linear - Slides and Carriages - Size 80

Part Number	Size	Type	Length mm <i>inches</i>	Weight g/m
# NW02-80	80	Carriage with Standard Mounting Hole	80 <i>3.150</i>	100g
# NS02-80-0.5	80	Slide Rail	500 <i>19.685</i>	1140g/m
# NS02-80-1.0	80	Slide Rail	1000 <i>39.370</i>	1140g/m

Indicates item not stocked at time of printing - Please enquire for lead time

E&OE Pricing and all details subject to change without notice - Copyright Miniature Bearings Australia Pty Ltd

MBA Size Listings are a guide to sizes only and must not be solely relied on for critical design information.

Drylin - Linear - Slides and Carriages - Size 80

Part Number	Size	Type	Length mm	Weight g/m
# NS02-80-2.0	80	Slide Rail	2000 <i>78.740</i>	1140g/m

Indicates item not stocked at time of printing - Please enquire for lead time
 E&OE Pricing and all details subject to change without notice - Copyright Miniature Bearings Australia Pty Ltd
 MBA Size Listings are a guide to sizes only and must not be solely relied on for critical design information.



DISTRIBUTED BY

Ask us to put your name and address here

<http://www.minibearings.com.au/product>

Ph +61 7 3245 7977

Fax +61 7 3245 1017

Catalogue requests to catalogues@minibearings.com.au
