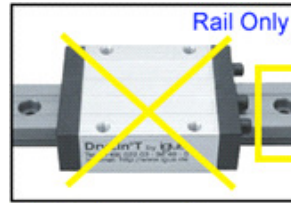


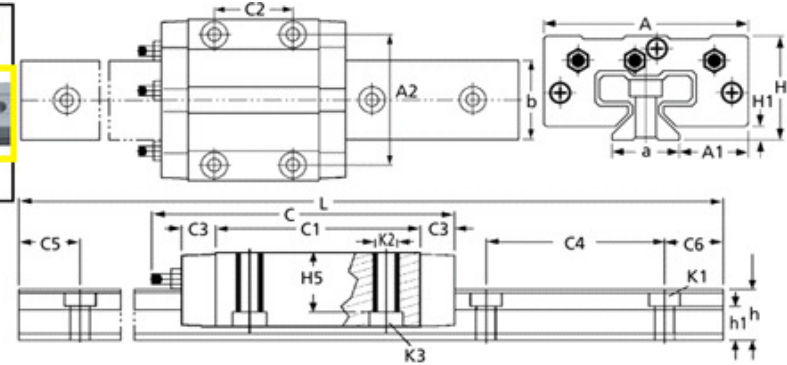


MBA

Drylin Linear Assembly Parts - Guide Rails Only



Rail Only. To make an assembly you will also need a carriage as listed in a separate category.



These rails require a matching carriage as listed in a separate category. Match by size.

Slide Rail: Extruded Aluminium Construction Material: Al Mg Si 0.5.

Coating: Hard anodised, 50µm Hardness: 500HV.

Matching components listed in separate category.

This catalogue to be read in conjunction with information at http://www.minibearings.com.au/ogue/tech/linear/drylin_t_tech.pdf

Drylin Linear Assembly Parts - Guide Rails Only

Part Number	Size	Length (L) mm	Height (h) mm	Width (b) mm	C5 and C6 (Min / Max) mm	Screw Size	Weight kg/m	Base width (a) +0.0/-0.2 mm	Bolt Hole Centres (C4) mm	h1 mm
		<i>inches</i>	<i>inches</i>	<i>inches</i>	<i>inches</i>			<i>inches</i>	<i>inches</i>	<i>inches</i>
# TS04-09-500	9	500 <i>19.685</i>	6.30 <i>0.248</i>	9.60 <i>0.378</i>	5 / 14.5	M2	0.11	9.00 <i>0.354</i>	20.00 <i>0.787</i>	4.6 <i>0.181</i>
TS04-09-1000	9	1000 <i>39.370</i>	6.30 <i>0.248</i>	9.60 <i>0.378</i>	5 / 14.5	M2	0.11	9.00 <i>0.354</i>	20.00 <i>0.787</i>	4.6 <i>0.181</i>
# TS04-12-500	12	500 <i>19.685</i>	8.60 <i>0.339</i>	13.00 <i>0.512</i>	5 / 19.5	M3	0.20	12.00 <i>0.472</i>	25.00 <i>0.984</i>	5.9 <i>0.232</i>

Indicates item not stocked at time of printing - Please enquire for lead time

E&OE Pricing and all details subject to change without notice - Copyright Miniature Bearings Australia Pty Ltd

MBA Size Listings are a guide to sizes only and must not be solely relied on for critical design information.

Drylin Linear Assembly Parts - Guide Rails Only

Part Number	Size	Length (L) mm	Height (h) mm	Width (b) mm	C5 and C6 (Min / Max) mm	Screw Size	Weight kg/m	Base width (a) +0.0/-0.2 mm	Bolt Hole Centres (C4) mm	h1 mm
		<i>inches</i>	<i>inches</i>	<i>inches</i>	<i>inches</i>			<i>inches</i>	<i>inches</i>	<i>inches</i>
# TS04-12-1000	12	1000 <i>39.370</i>	8.60 <i>0.339</i>	13.00 <i>0.512</i>	5 / 19.5	M3	0.20	12.00 <i>0.472</i>	25.00 <i>0.984</i>	5.9 <i>0.232</i>
# TS04-15-500	15	500 <i>19.685</i>	10.80 <i>0.425</i>	17.00 <i>0.669</i>	10 / 29.5	M3	0.33	15.00 <i>0.591</i>	40.00 <i>1.575</i>	7.0 <i>0.276</i>
# TS04-15-1000	15	1000 <i>39.370</i>	10.80 <i>0.425</i>	17.00 <i>0.669</i>	10 / 29.5	M3	0.33	15.00 <i>0.591</i>	40.00 <i>1.575</i>	7.0 <i>0.276</i>
# TS01-15-0500	15	500 <i>19.685</i>	15.50 <i>0.610</i>	22.00 <i>0.866</i>	20 / 49	M4	0.6	15.0 <i>0.591</i>	60.0 <i>2.362</i>	10.0 <i>0.394</i>
# TS01-20-0500	20	500 <i>19.685</i>	19.00 <i>0.748</i>	31.00 <i>1.220</i>	20 / 49	M5	1.0	20.0 <i>0.787</i>	60.0 <i>2.362</i>	12.3 <i>0.484</i>
# TS01-25-0500	25	500 <i>19.685</i>	21.50 <i>0.846</i>	34.00 <i>1.339</i>	20 / 49	M6	1.3	23.0 <i>0.906</i>	60.0 <i>2.362</i>	13.8 <i>0.543</i>
# TS01-30-0500	30	500 <i>19.685</i>	26.00 <i>1.024</i>	40.00 <i>1.575</i>	20 / 59	M8	1.9	28.0 <i>1.102</i>	80.0 <i>3.150</i>	15.8 <i>0.622</i>
# TS01-15-1000	15	1000 <i>39.370</i>	15.50 <i>0.610</i>	22.00 <i>0.866</i>	20 / 49	M4	0.6	15.0 <i>0.591</i>	60.0 <i>2.362</i>	10.0 <i>0.394</i>
# TS01-20-1000	20	1000 <i>39.370</i>	19.00 <i>0.748</i>	31.00 <i>1.220</i>	20 / 49	M5	1.0	20.0 <i>0.787</i>	60.0 <i>2.362</i>	12.3 <i>0.484</i>
TS01-25-1000	25	1000 <i>39.370</i>	21.50 <i>0.846</i>	34.00 <i>1.339</i>	20 / 49	M6	1.3	23.0 <i>0.906</i>	60.0 <i>2.362</i>	13.8 <i>0.543</i>

Indicates item not stocked at time of printing - Please enquire for lead time

E&OE Pricing and all details subject to change without notice - Copyright Miniature Bearings Australia Pty Ltd

MBA Size Listings are a guide to sizes only and must not be solely relied on for critical design information.

Drylin Linear Assembly Parts - Guide Rails Only

Part Number	Size	Length (L) mm	Height (h) mm	Width (b) mm	C5 and C6 (Min / Max) mm	Screw Size	Weight kg/m	Base width (a) +0.0/-0.2 mm	Bolt Hole Centres (C4) mm	h1 mm
		<i>inches</i>	<i>inches</i>	<i>inches</i>	<i>inches</i>			<i>inches</i>	<i>inches</i>	<i>inches</i>
# TS01-30-1000	30	1000	26.00	40.00	20 / 59	M8	1.9	28.0	80.0	15.8
		<i>39.370</i>	<i>1.024</i>	<i>1.575</i>				<i>1.102</i>	<i>3.150</i>	<i>0.622</i>

Indicates item not stocked at time of printing - Please enquire for lead time

E&OE Pricing and all details subject to change without notice - Copyright Miniature Bearings Australia Pty Ltd

MBA Size Listings are a guide to sizes only and must not be solely relied on for critical design information.



DISTRIBUTED BY

Ask us to put your name and address here

<http://www.minibearings.com.au/product>

Ph +61 7 3245 7977

Fax +61 7 3245 1017

Catalogue requests to catalogues@minibearings.com.au

