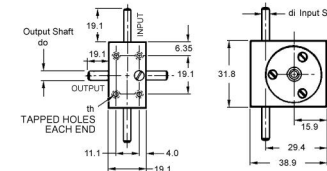




MBA

Gearboxes - Cross Axis - 38.9 x 31.8 x 19.1



Worm Gears - Precision.

Max Input : 6000 RPM.

Backlash at Output : 0 Deg 30 Min.

Packed with grease at assembly - temp range -32 Deg C to +146 Deg C (-25 F to 295 F).

Gearboxes - Cross Axis - 38.9 x 31.8 x 19.1

Part Number	Ratio	Input Shaft Diameter (di) mm <i>inches</i>	Output Shaft Diameter (do) mm <i>inches</i>	Max. Output Torque at 1800 rpm N.m	Max. Start Torque N.m	Worm / Worm Wheel Material	Tapped Hole Size (th)	Bearings (Input / Output)	Shafts (Input / Output)	Housing
# WGE32-008.0	8 : 1	3.000 <i>0.118</i>	4.000 <i>0.157</i>	0.51	0.0005	Hardened Carbon Steel / Phosphor Bronze	M3 x 4.8 Deep	Precision Ball / Self Lubricating Bronze	Carbon Steel / Mild Steel	Aluminium Alloy (Black Anodised)
# WGE32-008.0-IN	8 : 1	3.167 <i>0.125</i>	4.757 <i>0.187</i>	0.51	0.0005	Hardened Carbon Steel / Phosphor Bronze	4-40 x 4.76mm deep	Precision Ball / Self Lubricating Bronze	Carbon Steel / Mild Steel	Aluminium Alloy (Black Anodised)

Indicates item not stocked at time of printing - Please enquire for lead time

E&OE Pricing and all details subject to change without notice - Copyright Miniature Bearings Australia Pty Ltd

MBA Size Listings are a guide to sizes only and must not be solely relied on for critical design information.

Gearboxes - Cross Axis - 38.9 x 31.8 x 19.1

Part Number	Ratio	Input Shaft Diameter (di) mm <i>inches</i>	Output Shaft Diameter (do) mm <i>inches</i>	Max. Output Torque at 1800 rpm N.m	Max. Start Torque N.m	Worm / Worm Wheel Material	Tapped Hole Size (th)	Bearings (Input / Output)	Shafts (Input / Output)	Housing
# WGE32-010.0	10 : 1	3.000 <i>0.118</i>	4.000 <i>0.157</i>	0.51	0.0005	Hardened Carbon Steel / Phosphor Bronze	M3 x 4.8 Deep	Precision Ball / Self Lubricating Bronze	Carbon Steel / Mild Steel	Aluminium Alloy (Black Anodised)
# WGE32-010.0-IN	10 : 1	3.167 <i>0.125</i>	4.757 <i>0.187</i>	0.51	0.0005	Hardened Carbon Steel / Phosphor Bronze	4-40 x 4.76mm deep	Precision Ball / Self Lubricating Bronze	Carbon Steel / Mild Steel	Aluminium Alloy (Black Anodised)
# WGE32-012.5	12.5 : 1	3.000 <i>0.118</i>	4.000 <i>0.157</i>	0.51	0.0005	Hardened Carbon Steel / Phosphor Bronze	M3 x 4.8 Deep	Precision Ball / Self Lubricating Bronze	Carbon Steel / Mild Steel	Aluminium Alloy (Black Anodised)
# WGE32-012.5-IN	12.5 : 1	3.167 <i>0.125</i>	4.757 <i>0.187</i>	0.51	0.0005	Hardened Carbon Steel / Phosphor Bronze	4-40 x 4.76mm deep	Precision Ball / Self Lubricating Bronze	Carbon Steel / Mild Steel	Aluminium Alloy (Black Anodised)
# WGE32-016.7	16.67 : 1	3.000 <i>0.118</i>	4.000 <i>0.157</i>	0.51	0.0005	Hardened Carbon Steel / Phosphor Bronze	M3 x 4.8 Deep	Precision Ball / Self Lubricating Bronze	Carbon Steel / Mild Steel	Aluminium Alloy (Black Anodised)
# WGE32-016.7-IN	16.67 : 1	3.167 <i>0.125</i>	4.757 <i>0.187</i>	0.51	0.0005	Hardened Carbon Steel / Phosphor Bronze	4-40 x 4.76mm deep	Precision Ball / Self Lubricating Bronze	Carbon Steel / Mild Steel	Aluminium Alloy (Black Anodised)

Indicates item not stocked at time of printing - Please enquire for lead time

E&OE Pricing and all details subject to change without notice - Copyright Miniature Bearings Australia Pty Ltd

MBA Size Listings are a guide to sizes only and must not be solely relied on for critical design information.

Gearboxes - Cross Axis - 38.9 x 31.8 x 19.1

Part Number	Ratio	Input Shaft Diameter (di) mm <i>inches</i>	Output Shaft Diameter (do) mm <i>inches</i>	Max. Output Torque at 1800 rpm N.m	Max. Start Torque N.m	Worm / Worm Wheel Material	Tapped Hole Size (th)	Bearings (Input / Output)	Shafts (Input / Output)	Housing
# WGE32-020.0	20 : 1	3.000 <i>0.118</i>	4.000 <i>0.157</i>	0.51	0.0005	Hardened Carbon Steel / Phosphor Bronze	M3 x 4.8 Deep	Precision Ball / Self Lubricating Bronze	Carbon Steel / Mild Steel	Aluminium Alloy (Black Anodised)
# WGE32-020.0-IN	20 : 1	3.167 <i>0.125</i>	4.757 <i>0.187</i>	0.51	0.0005	Hardened Carbon Steel / Phosphor Bronze	4-40 x 4.76mm deep	Precision Ball / Self Lubricating Bronze	Carbon Steel / Mild Steel	Aluminium Alloy (Black Anodised)
# WGE32-025.0	25 : 1	3.000 <i>0.118</i>	4.000 <i>0.157</i>	0.51	0.0005	Hardened Carbon Steel / Phosphor Bronze	M3 x 4.8 Deep	Precision Ball / Self Lubricating Bronze	Carbon Steel / Mild Steel	Aluminium Alloy (Black Anodised)
# WGE32-025.0-IN	25 : 1	3.167 <i>0.125</i>	4.757 <i>0.187</i>	0.51	0.0005	Hardened Carbon Steel / Phosphor Bronze	4-40 x 4.76mm deep	Precision Ball / Self Lubricating Bronze	Carbon Steel / Mild Steel	Aluminium Alloy (Black Anodised)
# WGE32-030.0	30 : 1	3.000 <i>0.118</i>	4.000 <i>0.157</i>	0.51	0.0005	Hardened Carbon Steel / Phosphor Bronze	M3 x 4.8 Deep	Precision Ball / Self Lubricating Bronze	Carbon Steel / Mild Steel	Aluminium Alloy (Black Anodised)
# WGE32-030.0-IN	30 : 1	3.167 <i>0.125</i>	4.757 <i>0.187</i>	0.51	0.0005	Hardened Carbon Steel / Phosphor Bronze	4-40 x 4.76mm deep	Precision Ball / Self Lubricating Bronze	Carbon Steel / Mild Steel	Aluminium Alloy (Black Anodised)

Indicates item not stocked at time of printing - Please enquire for lead time

E&OE Pricing and all details subject to change without notice - Copyright Miniature Bearings Australia Pty Ltd

MBA Size Listings are a guide to sizes only and must not be solely relied on for critical design information.

Gearboxes - Cross Axis - 38.9 x 31.8 x 19.1

Part Number	Ratio	Input Shaft Diameter (di) mm <i>inches</i>	Output Shaft Diameter (do) mm <i>inches</i>	Max. Output Torque at 1800 rpm N.m	Max. Start Torque N.m	Worm / Worm Wheel Material	Tapped Hole Size (th)	Bearings (Input / Output)	Shafts (Input / Output)	Housing
# WGE32-050.0	50 : 1	3.000 <i>0.118</i>	4.000 <i>0.157</i>	0.51	0.0005	Hardened Carbon Steel / Phosphor Bronze	M3 x 4.8 Deep	Precision Ball / Self Lubricating Bronze	Carbon Steel / Mild Steel	Aluminium Alloy (Black Anodised)
# WGE32-050.0-IN	50 : 1	3.167 <i>0.125</i>	4.757 <i>0.187</i>	0.51	0.0005	Hardened Carbon Steel / Phosphor Bronze	4-40 x 4.76mm deep	Precision Ball / Self Lubricating Bronze	Carbon Steel / Mild Steel	Aluminium Alloy (Black Anodised)
# WGE32-060.0	60 : 1	3.000 <i>0.118</i>	4.000 <i>0.157</i>	0.51	0.0005	Hardened Carbon Steel / Phosphor Bronze	M3 x 4.8 Deep	Precision Ball / Self Lubricating Bronze	Carbon Steel / Mild Steel	Aluminium Alloy (Black Anodised)
# WGE32-060.0-IN	60 : 1	3.167 <i>0.125</i>	4.757 <i>0.187</i>	0.51	0.0005	Hardened Carbon Steel / Phosphor Bronze	4-40 x 4.76mm deep	Precision Ball / Self Lubricating Bronze	Carbon Steel / Mild Steel	Aluminium Alloy (Black Anodised)
# WGE32-080.0	80 : 1	3.000 <i>0.118</i>	4.000 <i>0.157</i>	0.51	0.0005	Hardened Carbon Steel / Phosphor Bronze	M3 x 4.8 Deep	Precision Ball / Self Lubricating Bronze	Carbon Steel / Mild Steel	Aluminium Alloy (Black Anodised)
# WGE32-080.0-IN	80 : 1	3.167 <i>0.125</i>	4.757 <i>0.187</i>	0.51	0.0005	Hardened Carbon Steel / Phosphor Bronze	4-40 x 4.76mm deep	Precision Ball / Self Lubricating Bronze	Carbon Steel / Mild Steel	Aluminium Alloy (Black Anodised)

Indicates item not stocked at time of printing - Please enquire for lead time

E&OE Pricing and all details subject to change without notice - Copyright Miniature Bearings Australia Pty Ltd

MBA Size Listings are a guide to sizes only and must not be solely relied on for critical design information.



DISTRIBUTED BY

Ask us to put your name and address here

<http://www.minibearings.com.au/product>

Ph +61 7 3245 7977

Fax +61 7 3245 1017

Catalogue requests to catalogues@minibearings.com.au

