



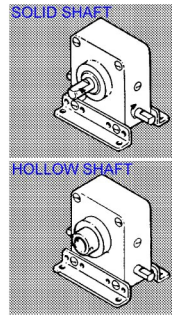
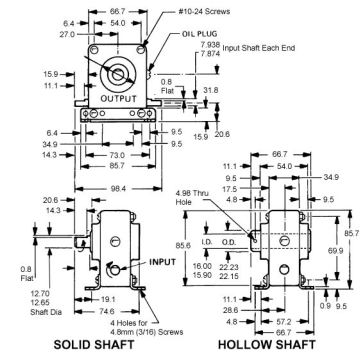
MBA

Gearboxes - Cross Axis - 85.6 x 66.7 x 34.9

Worm Gears - Commercial size 26.

Maximum input speed 1800 RPM.

Approx weight 0.6 KG (20 oz).



Gearboxes - Cross Axis - 85.6 x 66.7 x 34.9

Part Number	Ratio	Input Shaft Diameter (di) mm <i>inches</i>	Output Shaft Diameter (do) mm <i>inches</i>	Max. Output Torque at 1800 rpm N.m (oz.in)	Input / Output at 1800 RPM kw	Worm / Worm Wheel Material	Bearings (Input / Output)	Shafts (Input / Output)	Housing
# WGC26-003.5-SN	3.5 : 1	7.938 <i>0.313</i>	12.700 <i>0.500</i>	3.8 (34)	0.209 / 0.209	Steel / Nylon	Sintered / Sintered	Solid / Solid - Steel	Fibreglass Reinforced Plastic
# WGC26-003.5-SS	3.5 : 1	7.938 <i>0.313</i>	12.700 <i>0.500</i>	11.5 (102)	0.627 / 0.627	Steel / Bronze	Sintered / Sintered	Solid / Solid - Steel	Fibreglass Reinforced Plastic
# WGC26-003.5-HS	3.5 : 1	7.938 <i>0.313</i>	Hollow 15.875 ID x 22.225 OD	11.5 (102)	0.627 / 0.627	Steel / Bronze	Sintered / Sintered	Solid / Hollow - Steel	Fibreglass Reinforced Plastic

Indicates item not stocked at time of printing - Please enquire for lead time
 E&OE Pricing and all details subject to change without notice - Copyright Miniature Bearings Australia Pty Ltd
 MBA Size Listings are a guide to sizes only and must not be solely relied on for critical design information.

Gearboxes - Cross Axis - 85.6 x 66.7 x 34.9

Part Number	Ratio	Input Shaft Diameter (di) mm <i>inches</i>	Output Shaft Diameter (do) mm <i>inches</i>	Max. Output Torque at 1800 rpm N.m (oz.in)	Input / Output at 1800 RPM kw	Worm / Worm Wheel Material	Bearings (Input / Output)	Shafts (Input / Output)	Housing
# WGC26-003.5-HN	3.5 : 1	7.938 <i>0.313</i>	Hollow 15.875 ID x 22.225 OD <i>0.500</i>	3.8 (34)	0.209 / 0.209	Steel / Nylon	Sintered / Sintered	Solid / Hollow - Steel	Fibreglass Reinforced Plastic
# WGC26-010.0-SN	10 : 1	7.938 <i>0.313</i>	12.700 <i>0.500</i>	3.8 (34)	0.082 / 0.075	Steel / Nylon	Sintered / Sintered	Solid / Solid - Steel	Fibreglass Reinforced Plastic
# WGC26-010.0-SS	10 : 1	7.938 <i>0.313</i>	12.700 <i>0.500</i>	11.5 (102)	0.246 / 0.246	Steel / Bronze	Sintered / Sintered	Solid / Solid - Steel	Fibreglass Reinforced Plastic
# WGC26-010.0-HN	10 : 1	7.938 <i>0.313</i>	Hollow 15.875 ID x 22.225 OD <i>0.500</i>	3.8 (34)	0.082 / 0.075	Steel / Nylon	Sintered / Sintered	Solid / Hollow - Steel	Fibreglass Reinforced Plastic
# WGC26-010.0-HS	10 : 1	7.938 <i>0.313</i>	Hollow 15.875 ID x 22.225 OD <i>0.500</i>	11.5 (102)	0.246 / 0.246	Steel / Bronze	Sintered / Sintered	Solid / Hollow - Steel	Fibreglass Reinforced Plastic
# WGC26-015.0-SN	15 : 1	7.938 <i>0.313</i>	12.700 <i>0.500</i>	3.8 (34)	0.067 / 0.060	Steel / Nylon	Sintered / Sintered	Solid / Solid - Steel	Fibreglass Reinforced Plastic
# WGC26-015.0-SS	15 : 1	7.938 <i>0.313</i>	12.700 <i>0.500</i>	11.5 (102)	0.201 / 0.201	Steel / Bronze	Sintered / Sintered	Solid / Solid - Steel	Fibreglass Reinforced Plastic

Indicates item not stocked at time of printing - Please enquire for lead time

E&OE Pricing and all details subject to change without notice - Copyright Miniature Bearings Australia Pty Ltd

MBA Size Listings are a guide to sizes only and must not be solely relied on for critical design information.

Gearboxes - Cross Axis - 85.6 x 66.7 x 34.9

Part Number	Ratio	Input Shaft Diameter (di) mm <i>inches</i>	Output Shaft Diameter (do) mm <i>inches</i>	Max. Output Torque at 1800 rpm N.m (oz.in)	Input / Output at 1800 RPM kw	Worm / Worm Wheel Material	Bearings (Input / Output)	Shafts (Input / Output)	Housing
# WGC26-015.0-HN	15 : 1	7.938 <i>0.313</i>	Hollow 15.875 ID x 22.225 OD	3.8 (34)	0.067 / 0.060	Steel / Nylon	Sintered / Sintered	Solid / Hollow - Steel	Fibreglass Reinforced Plastic
# WGC26-015.0-HS	15 : 1	7.938 <i>0.313</i>	Hollow 15.875 ID x 22.225 OD	11.5 (102)	0.201 / 0.201	Steel / Bronze	Sintered / Sintered	Solid / Hollow - Steel	Fibreglass Reinforced Plastic
# WGC26-020.0-SS	20 : 1	7.938 <i>0.313</i>	12.700 <i>0.500</i>	11.9 (105)	0.168 / 0.168	Steel / Bronze	Sintered / Sintered	Solid / Solid - Steel	Fibreglass Reinforced Plastic
# WGC26-020.0-SN	20 : 1	7.938 <i>0.313</i>	12.700 <i>0.500</i>	4.0 (35)	0.056 / 0.045	Steel / Nylon	Sintered / Sintered	Solid / Solid - Steel	Fibreglass Reinforced Plastic
# WGC26-020.0-HS	20 : 1	7.938 <i>0.313</i>	Hollow 15.875 ID x 22.225 OD	11.9 (105)	0.168 / 0.168	Steel / Bronze	Sintered / Sintered	Solid / Hollow - Steel	Fibreglass Reinforced Plastic
# WGC26-020.0-HN	20 : 1	7.938 <i>0.313</i>	Hollow 15.875 ID x 22.225 OD	4.0 (35)	0.056 / 0.045	Steel / Nylon	Sintered / Sintered	Solid / Hollow - Steel	Fibreglass Reinforced Plastic
# WGC26-030.0-SN	30 : 1	7.938 <i>0.313</i>	12.700 <i>0.500</i>	4.5 (40)	0.037 / 0.030	Steel / Nylon	Sintered / Sintered	Solid / Solid - Steel	Fibreglass Reinforced Plastic

Indicates item not stocked at time of printing - Please enquire for lead time

E&OE Pricing and all details subject to change without notice - Copyright Miniature Bearings Australia Pty Ltd

MBA Size Listings are a guide to sizes only and must not be solely relied on for critical design information.

Gearboxes - Cross Axis - 85.6 x 66.7 x 34.9

Part Number	Ratio	Input Shaft Diameter (di) mm <i>inches</i>	Output Shaft Diameter (do) mm <i>inches</i>	Max. Output Torque at 1800 rpm N.m (oz.in)	Input / Output at 1800 RPM kw	Worm / Worm Wheel Material	Bearings (Input / Output)	Shafts (Input / Output)	Housing
# WGC26-030.0-SS	30 : 1	7.938 <i>0.313</i>	12.700 <i>0.500</i>	13.6 (120)	0.112 / 0.112	Steel / Bronze	Sintered / Sintered	Solid / Solid - Steel	Fibreglass Reinforced Plastic
# WGC26-030.0-HN	30 : 1	7.938 <i>0.313</i>	Hollow 15.875 ID x 22.225 OD	4.5 (40)	0.037 / 0.030	Steel / Nylon	Sintered / Sintered	Solid / Hollow - Steel	Fibreglass Reinforced Plastic
# WGC26-030.0-HS	30 : 1	7.938 <i>0.313</i>	Hollow 15.875 ID x 22.225 OD	13.6 (120)	0.112 / 0.112	Steel / Bronze	Sintered / Sintered	Solid / Hollow - Steel	Fibreglass Reinforced Plastic
# WGC26-040.0-SN	40 : 1	7.938 <i>0.313</i>	12.700 <i>0.500</i>	4.4 (39)	0.030 / 0.022	Steel / Nylon	Sintered / Sintered	Solid / Solid - Steel	Fibreglass Reinforced Plastic
# WGC26-040.0-SS	40 : 1	7.938 <i>0.313</i>	12.700 <i>0.500</i>	12.7 (112)	0.075 / 0.075	Steel / Bronze	Sintered / Sintered	Solid / Solid - Steel	Fibreglass Reinforced Plastic
# WGC26-040.0-HS	40 : 1	7.938 <i>0.313</i>	Hollow 15.875 ID x 22.225 OD	12.7 (112)	0.075 / 0.075	Steel / Bronze	Sintered / Sintered	Solid / Hollow - Steel	Fibreglass Reinforced Plastic
# WGC26-040.0-HN	40 : 1	7.938 <i>0.313</i>	Hollow 15.875 ID x 22.225 OD	4.4 (39)	0.030 / 0.022	Steel / Nylon	Sintered / Sintered	Solid / Hollow - Steel	Fibreglass Reinforced Plastic

Indicates item not stocked at time of printing - Please enquire for lead time

E&OE Pricing and all details subject to change without notice - Copyright Miniature Bearings Australia Pty Ltd

MBA Size Listings are a guide to sizes only and must not be solely relied on for critical design information.

Gearboxes - Cross Axis - 85.6 x 66.7 x 34.9

Part Number	Ratio	Input Shaft Diameter (di) mm <i>inches</i>	Output Shaft Diameter (do) mm <i>inches</i>	Max. Output Torque at 1800 rpm N.m (oz.in)	Input / Output at 1800 RPM kw	Worm / Worm Wheel Material	Bearings (Input / Output)	Shafts (Input / Output)	Housing
# WGC26-048.0-SN	48 : 1	7.938 <i>0.313</i>	12.700 <i>0.500</i>	3.6 (32)	0.022 / 0.015	Steel / Nylon	Sintered / Sintered	Solid / Solid - Steel	Fibreglass Reinforced Plastic
# WGC26-048.0-SS	48 : 1	7.938 <i>0.313</i>	12.700 <i>0.500</i>	10.8 (96)	0.067 / 0.067	Steel / Bronze	Sintered / Sintered	Solid / Solid - Steel	Fibreglass Reinforced Plastic
# WGC26-048.0-HS	48 : 1	7.938 <i>0.313</i>	Hollow 15.875 ID x 22.225 OD	10.8 (96)	0.067 / 0.067	Steel / Bronze	Sintered / Sintered	Solid / Hollow - Steel	Fibreglass Reinforced Plastic
# WGC26-048.0-HN	48 : 1	7.938 <i>0.313</i>	Hollow 15.875 ID x 22.225 OD	3.6 (32)	0.022 / 0.015	Steel / Nylon	Sintered / Sintered	Solid / Hollow - Steel	Fibreglass Reinforced Plastic
# WGC26-060.0-SS	60 : 1	7.938 <i>0.313</i>	12.700 <i>0.500</i>	8.5 (75)	0.056 / 0.056	Steel / Bronze	Sintered / Sintered	Solid / Solid - Steel	Fibreglass Reinforced Plastic
# WGC26-060.0-SN	60 : 1	7.938 <i>0.313</i>	12.700 <i>0.500</i>	2.8 (25)	0.019 / 0.009	Steel / Nylon	Sintered / Sintered	Solid / Solid - Steel	Fibreglass Reinforced Plastic
# WGC26-060.0-HN	60 : 1	7.938 <i>0.313</i>	Hollow 15.875 ID x 22.225 OD	2.8 (25)	0.019 / 0.009	Steel / Nylon	Sintered / Sintered	Solid / Hollow - Steel	Fibreglass Reinforced Plastic

Indicates item not stocked at time of printing - Please enquire for lead time

E&OE Pricing and all details subject to change without notice - Copyright Miniature Bearings Australia Pty Ltd

MBA Size Listings are a guide to sizes only and must not be solely relied on for critical design information.

Gearboxes - Cross Axis - 85.6 x 66.7 x 34.9

Part Number	Ratio	Input Shaft Diameter (di) mm <i>inches</i>	Output Shaft Diameter (do) mm <i>inches</i>	Max. Output Torque at 1800 rpm N.m (oz.in)	Input / Output at 1800 RPM kw	Worm / Worm Wheel Material	Bearings (Input / Output)	Shafts (Input / Output)	Housing
# WGC26-060.0-HS	60 : 1	7.938 <i>0.313</i>	Hollow 15.875 ID x 22.225 OD	8.5 (75)	0.056 / 0.056	Steel / Bronze	Sintered / Sintered	Solid / Hollow - Steel	Fibreglass Reinforced Plastic

Indicates item not stocked at time of printing - Please enquire for lead time

E&OE Pricing and all details subject to change without notice - Copyright Miniature Bearings Australia Pty Ltd

MBA Size Listings are a guide to sizes only and must not be solely relied on for critical design information.



DISTRIBUTED BY

Ask us to put your name and address here

<http://www.minibearings.com.au/product>

Ph +61 7 3245 7977

Fax +61 7 3245 1017

Catalogue requests to catalogues@minibearings.com.au
