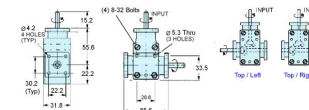




# MBA

## Gearboxes - Right Angle - 85.5 x 77.8 x 31.8mm



Bevel Gears - Plastic Housing. GDLBP Series.

Max Backlash 5 Degrees.

### Gearboxes - Right Angle - 85.5 x 77.8 x 31.8mm

Part Number	Ratio	Shafts Diameter (d) mm <i>inches</i>	Shaft Positions	Max Output Torque at 1800 RPM N.m	Bearing (Input / Output)	Max Output Power at 1800rpm Watts (hp)	Bevel Gear Material
# GDLBP-1-9R-0.33	1 : 1	9.00 <i>0.354</i>	Top / Right	0.333	Ball/Ball	249 (0.33)	Steel
# GDLBP-1-9L-0.33	1 : 1	9.00 <i>0.354</i>	Top / Left	0.333	Ball/Ball	249 (0.33)	Steel
# GDLBP-1-9.5R-0.25	1 : 1	9.53 <i>0.375</i>	Top / Right	0.246	Ball / Ball	249 (0.33)	Steel
# GDLBP-1-9.5L-0.25	1 : 1	9.53 <i>0.375</i>	Top / Left	0.246	Ball / Ball	249 (0.33)	Steel

# Indicates item not stocked at time of printing - Please enquire for lead time

E&OE Pricing and all details subject to change without notice - Copyright Miniature Bearings Australia Pty Ltd

MBA Size Listings are a guide to sizes only and must not be solely relied on for critical design information.



DISTRIBUTED BY

Ask us to put your name and address here

<http://www.minibearings.com.au/product>

Ph +61 7 3245 7977

Fax +61 7 3245 1017

Catalogue requests to [catalogues@minibearings.com.au](mailto:catalogues@minibearings.com.au)

