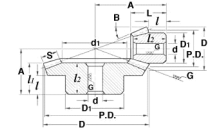




# MBA

## Gears - Bevel - Spiral - Module 4



For 90 degree angle power transfer.

See Gears - Mitre for 1:1 ratios.

ISO Class 6.

35 Degree Spiral Angle / 20 Degree Pressure Angle.

AISI 1045 Steel, Tooth surfaces induction hardened to HRC48.53.

Black oxide finish except bore and tooth surfaces.

### Gears - Bevel - Spiral - Module 4

Part Number	Ratio	Comment	Teeth No.	Material	Bore mm	Pitch Diameter mm	Face Width mm	Overall Width mm	Hub Diameter mm	Mounting Distance mm
					<i>inches</i>	<i>inches</i>	<i>inches</i>	<i>inches</i>	<i>inches</i>	<i>inches</i>
# GBS400-20-2000-2800-ST	2 : 1 Set 1	Add matching gear to make a set	20	Steel	20.000	80.00	28.00	66.24	60.000	120.000
					<i>0.787</i>	<i>3.150</i>	<i>1.102</i>	<i>2.608</i>	<i>2.362</i>	<i>4.724</i>
# GBS400-40-2000-ST	2 : 1 Set 1	Add matching pinion to make a set	40	Steel	20.000	160.00	28.00	53.68	70.000	80.000
					<i>0.787</i>	<i>6.299</i>	<i>1.102</i>	<i>2.113</i>	<i>2.756</i>	<i>3.150</i>

# Indicates item not stocked at time of printing - Please enquire for lead time

E&OE Pricing and all details subject to change without notice - Copyright Miniature Bearings Australia Pty Ltd

MBA Size Listings are a guide to sizes only and must not be solely relied on for critical design information.

## Gears - Bevel - Spiral - Module 4

Part Number	Ratio	Comment	Teeth No.	Material	Bore mm	Pitch Diameter mm	Face Width mm	Overall Width mm	Hub Diameter mm	Mounting Distance mm
					<i>inches</i>	<i>inches</i>	<i>inches</i>	<i>inches</i>	<i>inches</i>	<i>inches</i>
# GBS400-20-2000-2000-ST	3 : 2 Set 1	Add matching gear to make a set	20	Steel	20.000	80.00	20.00	48.17	60.000	90.000
					<i>0.787</i>	<i>3.150</i>	<i>0.787</i>	<i>1.896</i>	<i>2.362</i>	<i>3.543</i>
# GBS400-30-2000-ST	3 : 2 Set 1	Add matching pinion to make a set	30	Steel	20.000	120.00	20.00	47.49	70.000	75.000
					<i>0.787</i>	<i>4.724</i>	<i>0.787</i>	<i>1.870</i>	<i>2.756</i>	<i>2.953</i>

# Indicates item not stocked at time of printing - Please enquire for lead time

E&OE Pricing and all details subject to change without notice - Copyright Miniature Bearings Australia Pty Ltd

MBA Size Listings are a guide to sizes only and must not be solely relied on for critical design information.



DISTRIBUTED BY

Ask us to put your name and address here

<http://www.minibearings.com.au/product>

Ph +61 7 3245 7977

Fax +61 7 3245 1017

Catalogue requests to [catalogues@minibearings.com.au](mailto:catalogues@minibearings.com.au)
