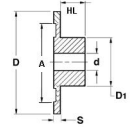




MBA

Gears - Blanks



Blanks for cutting gears and pulleys and friction drives.

Gears - Blanks

Part Number	OD (D) mm	Face Width (S) mm	Bore (d) mm	A Diameter mm	Hub Diameter (D1) mm	Lightening holes centre diam. mm	Hub Projection (HL) mm	Locking Type	Material
	<i>inches</i>	<i>inches</i>	<i>inches</i>	<i>inches</i>	<i>inches</i>	<i>inches</i>	<i>inches</i>		
GBL-019-0300-0300-ACB	19.300	3.000	3.000	Solid	13.00		6.50	M2.5 Set Screw	Acetal / With Insert
	<i>0.760</i>	<i>0.118</i>	<i>0.118</i>		<i>0.512</i>		<i>0.256</i>		
# GBL-019-0300-0400-ACB	19.300	3.000	4.000	Solid	13.00		6.50	M3 Set Screw	Acetal / With Insert
	<i>0.760</i>	<i>0.118</i>	<i>0.157</i>		<i>0.512</i>		<i>0.256</i>		
GBL-019-0300-0500-ACB	19.300	3.000	5.000	Solid	13.00		6.50	M3 Set Screw	Acetal / With Insert
	<i>0.760</i>	<i>0.118</i>	<i>0.197</i>		<i>0.512</i>		<i>0.256</i>		
# GBL-019-0300-0600-ACB	19.300	3.000	6.000	Solid	13.00		6.50	M3 Set Screw	Acetal / With Insert
	<i>0.760</i>	<i>0.118</i>	<i>0.236</i>		<i>0.512</i>		<i>0.256</i>		

Indicates item not stocked at time of printing - Please enquire for lead time
 E&OE Pricing and all details subject to change without notice - Copyright Miniature Bearings Australia Pty Ltd
 MBA Size Listings are a guide to sizes only and must not be solely relied on for critical design information.

Gears - Blanks

Part Number	OD (D) mm	Face Width (S) mm	Bore (d) mm	A Diameter mm	Hub Diameter (D1) mm	Lightening holes centre diam. mm	Hub Projection (HL) mm	Locking Type	Material
	<i>inches</i>	<i>inches</i>	<i>inches</i>	<i>inches</i>	<i>inches</i>	<i>inches</i>	<i>inches</i>		
# GBL-019-0300-1000-ACE	19.300 <i>0.760</i>	3.000 <i>0.118</i>	10.000 <i>0.394</i>	Solid	13.00 <i>0.512</i>		6.50 <i>0.256</i>	None	Acetal / No Insert
# GBL-019-0318-0318-ACB	19.304 <i>0.760</i>	3.175 <i>0.125</i>	3.175 <i>0.125</i>	Solid	13.10 <i>0.516</i>		6.35 <i>0.250</i>	2-56 Set Screw	Acetal / With Insert
# GBL-019-0318-0476-ACB	19.304 <i>0.760</i>	3.175 <i>0.125</i>	4.763 <i>0.188</i>	Solid	13.10 <i>0.516</i>		6.35 <i>0.250</i>	4-40 Set Screw	Acetal / With Insert
# GBL-019-0318-0635-ACB	19.304 <i>0.760</i>	3.175 <i>0.125</i>	6.350 <i>0.250</i>	Solid	13.10 <i>0.516</i>		6.35 <i>0.250</i>	6-32 Set Screw	Acetal / With Insert
# GBL-019-0318-0950-ACE	19.304 <i>0.760</i>	3.175 <i>0.125</i>	9.500 <i>0.374</i>	Solid	13.10 <i>0.516</i>		6.35 <i>0.250</i>	None	Acetal / No Insert
# GBL-022-0318-0318-ACB	22.479 <i>0.885</i>	3.175 <i>0.125</i>	3.175 <i>0.125</i>	Solid	13.10 <i>0.516</i>		6.35 <i>0.250</i>	2-56 Set Screw	Acetal / With Insert
# GBL-022-0318-0476-ACB	22.479 <i>0.885</i>	3.175 <i>0.125</i>	4.763 <i>0.188</i>	Solid	13.10 <i>0.516</i>		6.35 <i>0.250</i>	4-40 Set Screw	Acetal / With Insert
# GBL-022-0318-0635-ACB	22.479 <i>0.885</i>	3.175 <i>0.125</i>	6.350 <i>0.250</i>	Solid	13.10 <i>0.516</i>		6.35 <i>0.250</i>	6-32 Set Screw	Acetal / With Insert
# GBL-022-0318-0950-ACE	22.479 <i>0.885</i>	3.175 <i>0.125</i>	9.500 <i>0.374</i>	Solid	13.10 <i>0.516</i>		6.35 <i>0.250</i>	None	Acetal / No Insert

Indicates item not stocked at time of printing - Please enquire for lead time

E&OE Pricing and all details subject to change without notice - Copyright Miniature Bearings Australia Pty Ltd

MBA Size Listings are a guide to sizes only and must not be solely relied on for critical design information.

Gears - Blanks

Part Number	OD (D) mm	Face Width (S) mm	Bore (d) mm	A Diameter mm	Hub Diameter (D1) mm	Lightening holes centre diam. mm	Hub Projection (HL) mm	Locking Type	Material
	<i>inches</i>	<i>inches</i>	<i>inches</i>	<i>inches</i>	<i>inches</i>	<i>inches</i>	<i>inches</i>		
# GBL-022-0300-0300-ACB	22.500	3.000	3.000	Solid	13.00		6.50	M2.5 Set Screw	Acetal / With Insert
	<i>0.886</i>	<i>0.118</i>	<i>0.118</i>		<i>0.512</i>		<i>0.256</i>		
# GBL-022-0300-0400-ACB	22.500	3.000	4.000	Solid	13.00		6.50	M3 Set Screw	Acetal / With Insert
	<i>0.886</i>	<i>0.118</i>	<i>0.157</i>		<i>0.512</i>		<i>0.256</i>		
GBL-022-0300-0500-ACB	22.500	3.000	5.000	Solid	13.00		6.50	M3 Set Screw	Acetal / With Insert
	<i>0.886</i>	<i>0.118</i>	<i>0.197</i>		<i>0.512</i>		<i>0.256</i>		
# GBL-022-0300-0600-ACB	22.500	3.000	6.000	Solid	13.00		6.50	M3 Set Screw	Acetal / With Insert
	<i>0.886</i>	<i>0.118</i>	<i>0.236</i>		<i>0.512</i>		<i>0.256</i>		
# GBL-022-0300-1000-ACE	22.500	3.000	10.000	Solid	13.00		6.50	None	Acetal / No Insert
	<i>0.886</i>	<i>0.118</i>	<i>0.394</i>		<i>0.512</i>		<i>0.256</i>		
# GBL-025-0300-0300-ACB	25.600	3.000	3.000	Solid	13.00		6.50	M2.5 Set Screw	Acetal / With Insert
	<i>1.008</i>	<i>0.118</i>	<i>0.118</i>		<i>0.512</i>		<i>0.256</i>		
# GBL-025-0300-0400-ACB	25.600	3.000	4.000	Solid	13.00		6.50	M3 Set Screw	Acetal / With Insert
	<i>1.008</i>	<i>0.118</i>	<i>0.157</i>		<i>0.512</i>		<i>0.256</i>		
# GBL-025-0300-0500-ACB	25.600	3.000	5.000	Solid	13.00		6.50	M3 Set Screw	Acetal / With Insert
	<i>1.008</i>	<i>0.118</i>	<i>0.197</i>		<i>0.512</i>		<i>0.256</i>		

Indicates item not stocked at time of printing - Please enquire for lead time

E&OE Pricing and all details subject to change without notice - Copyright Miniature Bearings Australia Pty Ltd

MBA Size Listings are a guide to sizes only and must not be solely relied on for critical design information.

Gears - Blanks

Part Number	OD (D) mm	Face Width (S) mm	Bore (d) mm	A Diameter mm	Hub Diameter (D1) mm	Lightening holes centre diam. mm	Hub Projection (HL) mm	Locking Type	Material
	<i>inches</i>	<i>inches</i>	<i>inches</i>	<i>inches</i>	<i>inches</i>	<i>inches</i>	<i>inches</i>		
# GBL-025-0300-0600-ACB	25.600	3.000	6.000	Solid	13.00		6.50	M3 Set Screw	Acetal / With Insert
	<i>1.008</i>	<i>0.118</i>	<i>0.236</i>		<i>0.512</i>		<i>0.256</i>		
# GBL-025-0300-1000-ACE	25.600	3.000	10.000	Solid	13.00		6.50	None	Acetal / No Insert
	<i>1.008</i>	<i>0.118</i>	<i>0.394</i>		<i>0.512</i>		<i>0.256</i>		
# GBL-025-0318-0318-ACB	25.654	3.175	3.175	Solid	13.10		6.35	2-56 Set Screw	Acetal / With Insert
	<i>1.010</i>	<i>0.125</i>	<i>0.125</i>		<i>0.516</i>		<i>0.250</i>		
# GBL-025-0318-0476-ACB	25.654	3.175	4.763	Solid	13.10		6.35	4-40 Set Screw	Acetal / With Insert
	<i>1.010</i>	<i>0.125</i>	<i>0.188</i>		<i>0.516</i>		<i>0.250</i>		
# GBL-025-0318-0635-ACB	25.654	3.175	6.350	Solid	13.10		6.35	6-32 Set Screw	Acetal / With Insert
	<i>1.010</i>	<i>0.125</i>	<i>0.250</i>		<i>0.516</i>		<i>0.250</i>		
# GBL-025-0318-0950-ACE	25.654	3.175	9.500	Solid	13.10		6.35	None	Acetal / No Insert
	<i>1.010</i>	<i>0.125</i>	<i>0.374</i>		<i>0.516</i>		<i>0.250</i>		
# GBL-028-0318-0953-ACAL	28.575	3.175	9.525	Solid				None	Acetal Rim / Alum. Core
	<i>1.125</i>	<i>0.125</i>	<i>0.375</i>						
# GBL-028-0300-0300-ACB	28.800	3.000	3.000	Solid	16.00		6.50	M2.5 Set Screw	Acetal / With Insert
	<i>1.134</i>	<i>0.118</i>	<i>0.118</i>		<i>0.630</i>		<i>0.256</i>		
# GBL-028-0300-0400-ACB	28.800	3.000	4.000	Solid	16.00		6.50	M3 Set Screw	Acetal / With Insert
	<i>1.134</i>	<i>0.118</i>	<i>0.157</i>		<i>0.630</i>		<i>0.256</i>		

Indicates item not stocked at time of printing - Please enquire for lead time

E&OE Pricing and all details subject to change without notice - Copyright Miniature Bearings Australia Pty Ltd

MBA Size Listings are a guide to sizes only and must not be solely relied on for critical design information.

Gears - Blanks

Part Number	OD (D) mm	Face Width (S) mm	Bore (d) mm	A Diameter mm	Hub Diameter (D1) mm	Lightening holes centre diam. mm	Hub Projection (HL) mm	Locking Type	Material
	<i>inches</i>	<i>inches</i>	<i>inches</i>	<i>inches</i>	<i>inches</i>	<i>inches</i>	<i>inches</i>		
# GBL-028-0300-0500-ACB	28.800	3.000	5.000	Solid	16.00		6.50	M3 Set Screw	Acetal / With Insert
	<i>1.134</i>	<i>0.118</i>	<i>0.197</i>		<i>0.630</i>		<i>0.256</i>		
# GBL-028-0300-0600-ACB	28.800	3.000	6.000	Solid	16.00		6.50	M3 Set Screw	Acetal / With Insert
	<i>1.134</i>	<i>0.118</i>	<i>0.236</i>		<i>0.630</i>		<i>0.256</i>		
# GBL-028-0300-1200-ACE	28.800	3.000	12.000	Solid	16.00		6.50	None	Acetal / No Insert
	<i>1.134</i>	<i>0.118</i>	<i>0.472</i>		<i>0.630</i>		<i>0.256</i>		
# GBL-028-0318-0318-ACB	28.829	3.175	3.175	Solid	15.88		6.35	2-56 Set Screw	Acetal / With Insert
	<i>1.135</i>	<i>0.125</i>	<i>0.125</i>		<i>0.625</i>		<i>0.250</i>		
# GBL-028-0318-0476-ACB	28.829	3.175	4.763	Solid	15.88		6.35	4-40 Set Screw	Acetal / With Insert
	<i>1.135</i>	<i>0.125</i>	<i>0.188</i>		<i>0.625</i>		<i>0.250</i>		
# GBL-028-0318-0635-ACB	28.829	3.175	6.350	Solid	15.88		6.35	6-32 Set Screw	Acetal / With Insert
	<i>1.135</i>	<i>0.125</i>	<i>0.250</i>		<i>0.625</i>		<i>0.250</i>		
# GBL-028-0318-1110-ACE	28.829	3.175	11.100	Solid	15.88		6.35	None	Acetal / No Insert
	<i>1.135</i>	<i>0.125</i>	<i>0.437</i>		<i>0.625</i>		<i>0.250</i>		
# GBL-031-0318-0318-ACB	31.750	3.175	3.175	Solid	15.88		12.70	2-56 Set Screw	Acetal / With Insert
	<i>1.250</i>	<i>0.125</i>	<i>0.125</i>		<i>0.625</i>		<i>0.500</i>		
# GBL-031-0318-0476-ACB	31.750	3.175	4.763	Solid	15.88		12.70	4-40 Set Screw	Acetal / With Insert
	<i>1.250</i>	<i>0.125</i>	<i>0.188</i>		<i>0.625</i>		<i>0.500</i>		

Indicates item not stocked at time of printing - Please enquire for lead time

E&OE Pricing and all details subject to change without notice - Copyright Miniature Bearings Australia Pty Ltd

MBA Size Listings are a guide to sizes only and must not be solely relied on for critical design information.

Gears - Blanks

Part Number	OD (D) mm	Face Width (S) mm	Bore (d) mm	A Diameter mm	Hub Diameter (D1) mm	Lightening holes centre diam. mm	Hub Projection (HL) mm	Locking Type	Material
	<i>inches</i>	<i>inches</i>	<i>inches</i>	<i>inches</i>	<i>inches</i>	<i>inches</i>	<i>inches</i>		
# GBL-031-0318-0635-ACE	31.750 <i>1.250</i>	3.175 <i>0.125</i>	6.350 <i>0.250</i>	Solid	15.88 <i>0.625</i>		12.70 <i>0.500</i>	None	Acetal / No Insert
# GBL-031-0318-0635-ACB	31.750 <i>1.250</i>	3.175 <i>0.125</i>	6.350 <i>0.250</i>	Solid	15.88 <i>0.625</i>		12.70 <i>0.500</i>	6-32 Set Screw	Acetal / With Insert
# GBL-031-0476-0318-ACB	31.750 <i>1.250</i>	4.762 <i>0.187</i>	3.175 <i>0.125</i>	Solid	15.88 <i>0.625</i>		12.70 <i>0.500</i>	2-56 Set Screw	Acetal / With Insert
# GBL-031-0476-0476-ACB	31.750 <i>1.250</i>	4.762 <i>0.187</i>	4.763 <i>0.188</i>	Solid	15.88 <i>0.625</i>		12.70 <i>0.500</i>	4-40 Set Screw	Acetal / With Insert
# GBL-031-0476-0635-ACB	31.750 <i>1.250</i>	4.762 <i>0.187</i>	6.350 <i>0.250</i>	Solid	15.88 <i>0.625</i>		12.70 <i>0.500</i>	6-32 Set Screw	Acetal / With Insert
# GBL-031-0476-0635-ACE	31.750 <i>1.250</i>	4.762 <i>0.187</i>	6.350 <i>0.250</i>	Solid	15.88 <i>0.625</i>		12.70 <i>0.500</i>	None	Acetal / No Insert
# GBL-031-0635-0476-ACB	31.750 <i>1.250</i>	6.350 <i>0.250</i>	4.763 <i>0.188</i>	Solid	15.88 <i>0.625</i>		12.70 <i>0.500</i>	2-56 Set Screw	Acetal / With Insert
# GBL-031-0635-0635-ACB	31.750 <i>1.250</i>	6.350 <i>0.250</i>	6.350 <i>0.250</i>	Solid	15.88 <i>0.625</i>		12.70 <i>0.500</i>	4-40 Set Screw	Acetal / With Insert
# GBL-031-0635-0635-ACE	31.750 <i>1.250</i>	6.350 <i>0.250</i>	6.350 <i>0.250</i>	Solid	15.88 <i>0.625</i>		12.70 <i>0.500</i>	None	Acetal / No Insert

Indicates item not stocked at time of printing - Please enquire for lead time

E&OE Pricing and all details subject to change without notice - Copyright Miniature Bearings Australia Pty Ltd

MBA Size Listings are a guide to sizes only and must not be solely relied on for critical design information.

Gears - Blanks

Part Number	OD (D) mm	Face Width (S) mm	Bore (d) mm	A Diameter mm	Hub Diameter (D1) mm	Lightening holes centre diam. mm	Hub Projection (HL) mm	Locking Type	Material
	<i>inches</i>	<i>inches</i>	<i>inches</i>	<i>inches</i>	<i>inches</i>	<i>inches</i>	<i>inches</i>		
# GBL-031-0635-0794-ACB	31.750	6.350	7.938	Solid	15.88		12.70	6-32 Set Screw	Acetal / With Insert
	<i>1.250</i>	<i>0.250</i>	<i>0.313</i>		<i>0.625</i>		<i>0.500</i>		
GBL-031-0480-0400-ACB	31.800	4.800	4.000	-	16.000		12.70	Grub Screw	Acetal with Brass Insert
	<i>1.252</i>	<i>0.189</i>	<i>0.157</i>		<i>0.630</i>		<i>0.500</i>		
# GBL-031-0480-0500-ACB	31.800	4.800	5.000	Solid	16.00		12.70	M2.5 Set Screw	Acetal / With Insert
	<i>1.252</i>	<i>0.189</i>	<i>0.197</i>		<i>0.630</i>		<i>0.500</i>		
# GBL-031-0480-0600-ACB	31.800	4.800	6.000	Solid	16.00		12.70	M3 Set Screw	Acetal / With Insert
	<i>1.252</i>	<i>0.189</i>	<i>0.236</i>		<i>0.630</i>		<i>0.500</i>		
# GBL-031-0480-0800-ACB	31.800	4.800	8.000	Solid	16.00		12.70	M4 Set Screw	Acetal / With Insert
	<i>1.252</i>	<i>0.189</i>	<i>0.315</i>		<i>0.630</i>		<i>0.500</i>		
# GBL-032-0300-0300-ACB	32.000	3.000	3.000	Solid	16.00		6.50	M2.5 Set Screw	Acetal / With Insert
	<i>1.260</i>	<i>0.118</i>	<i>0.118</i>		<i>0.630</i>		<i>0.256</i>		
# GBL-032-0300-0400-ACB	32.000	3.000	4.000	Solid	16.00		6.50	M3 Set Screw	Acetal / With Insert
	<i>1.260</i>	<i>0.118</i>	<i>0.157</i>		<i>0.630</i>		<i>0.256</i>		
# GBL-032-0300-0500-ACB	32.000	3.000	5.000	Solid	16.00		6.50	M3 Set Screw	Acetal / With Insert
	<i>1.260</i>	<i>0.118</i>	<i>0.197</i>		<i>0.630</i>		<i>0.256</i>		

Indicates item not stocked at time of printing - Please enquire for lead time

E&OE Pricing and all details subject to change without notice - Copyright Miniature Bearings Australia Pty Ltd

MBA Size Listings are a guide to sizes only and must not be solely relied on for critical design information.

Gears - Blanks

Part Number	OD (D) mm	Face Width (S) mm	Bore (d) mm	A Diameter mm	Hub Diameter (D1) mm	Lightening holes centre diam. mm	Hub Projection (HL) mm	Locking Type	Material
	<i>inches</i>	<i>inches</i>	<i>inches</i>	<i>inches</i>	<i>inches</i>	<i>inches</i>	<i>inches</i>		
# GBL-032-0300-0600-ACB	32.000	3.000	6.000	Solid	16.00		6.50	M3 Set Screw	Acetal / With Insert
	<i>1.260</i>	<i>0.118</i>	<i>0.236</i>		<i>0.630</i>		<i>0.256</i>		
# GBL-032-0300-1200-ACE	32.000	3.000	12.000	Solid	16.00		6.50	None	Acetal / No Insert
	<i>1.260</i>	<i>0.118</i>	<i>0.472</i>		<i>0.630</i>		<i>0.256</i>		
# GBL-032-0318-0318-ACB	32.004	3.175	3.175	Solid	15.88		6.35	2-56 Set Screw	Acetal / With Insert
	<i>1.260</i>	<i>0.125</i>	<i>0.125</i>		<i>0.625</i>		<i>0.250</i>		
# GBL-032-0318-0476-ACB	32.004	3.175	4.763	Solid	15.88		6.35	4-40 Set Screw	Acetal / With Insert
	<i>1.260</i>	<i>0.125</i>	<i>0.188</i>		<i>0.625</i>		<i>0.250</i>		
# GBL-032-0318-0635-ACB	32.004	3.175	6.350	Solid	15.88		6.35	6-32 Set Screw	Acetal / With Insert
	<i>1.260</i>	<i>0.125</i>	<i>0.250</i>		<i>0.625</i>		<i>0.250</i>		
# GBL-032-0318-1110-ACE	32.004	3.175	11.100	Solid	15.88		6.35	None	Acetal / No Insert
	<i>1.260</i>	<i>0.125</i>	<i>0.437</i>		<i>0.625</i>		<i>0.250</i>		
# GBL-034-1000-1000-ST	34.000	10.000	10X9 (D-BORE)		20.00		10.00	None	STEEL/D BORE
	<i>1.339</i>	<i>0.394</i>			<i>0.787</i>		<i>0.394</i>		
# GBL-034-1000-1200-ST	34.000	10.000	12X10.8 (D-BORE)		24.00		10.00	None	STEEL/D BORE
	<i>1.339</i>	<i>0.394</i>			<i>0.945</i>		<i>0.394</i>		
# GBL-034-0318-0953-ACAL	34.925	3.175	9.525	Solid				None	Acetal Rim / Alum. Core
	<i>1.375</i>	<i>0.125</i>	<i>0.375</i>						

Indicates item not stocked at time of printing - Please enquire for lead time

E&OE Pricing and all details subject to change without notice - Copyright Miniature Bearings Australia Pty Ltd

MBA Size Listings are a guide to sizes only and must not be solely relied on for critical design information.

Gears - Blanks

Part Number	OD (D) mm	Face Width (S) mm	Bore (d) mm	A Diameter mm	Hub Diameter (D1) mm	Lightening holes centre diam. mm	Hub Projection (HL) mm	Locking Type	Material
	<i>inches</i>	<i>inches</i>	<i>inches</i>	<i>inches</i>	<i>inches</i>	<i>inches</i>	<i>inches</i>		
# GBL-038-1000-1000-ST	38.000 <i>1.496</i>	10.000 <i>0.394</i>	10X9 (D-BORE)		20.00 <i>0.787</i>		10.00 <i>0.394</i>	None	STEEL/D BORE
# GBL-038-0318-0318-ACB	38.481 <i>1.515</i>	3.175 <i>0.125</i>	3.175 <i>0.125</i>	25.400 <i>1.000</i>	15.88 <i>0.625</i>		6.35 <i>0.250</i>	2-56 Set Screw	Acetal / With Insert
# GBL-038-0318-0476-ACB	38.481 <i>1.515</i>	3.175 <i>0.125</i>	4.763 <i>0.188</i>	25.400 <i>1.000</i>	15.88 <i>0.625</i>		6.35 <i>0.250</i>	4-40 Set Screw	Acetal / With Insert
# GBL-038-0318-0635-ACB	38.481 <i>1.515</i>	3.175 <i>0.125</i>	6.350 <i>0.250</i>	25.400 <i>1.000</i>	15.88 <i>0.625</i>		6.35 <i>0.250</i>	6-32 Set Screw	Acetal / With Insert
# GBL-038-0318-1110-ACE	38.481 <i>1.515</i>	3.175 <i>0.125</i>	11.100 <i>0.437</i>	25.400 <i>1.000</i>	15.88 <i>0.625</i>		6.35 <i>0.250</i>	None	Acetal / No Insert
# GBL-038-0300-0300-ACB	38.500 <i>1.516</i>	3.000 <i>0.118</i>	3.000 <i>0.118</i>	25.000 <i>0.984</i>	16.00 <i>0.630</i>		6.50 <i>0.256</i>	M2.5 Set Screw	Acetal / With Insert
# GBL-038-0300-0400-ACB	38.500 <i>1.516</i>	3.000 <i>0.118</i>	4.000 <i>0.157</i>	25.000 <i>0.984</i>	16.00 <i>0.630</i>		6.50 <i>0.256</i>	M3 Set Screw	Acetal / With Insert
# GBL-038-0300-0500-ACB	38.500 <i>1.516</i>	3.000 <i>0.118</i>	5.000 <i>0.197</i>	25.000 <i>0.984</i>	16.00 <i>0.630</i>		6.50 <i>0.256</i>	M3 Set Screw	Acetal / With Insert
# GBL-038-0300-0600-ACB	38.500 <i>1.516</i>	3.000 <i>0.118</i>	6.000 <i>0.236</i>	25.000 <i>0.984</i>	16.00 <i>0.630</i>		6.50 <i>0.256</i>	M3 Set Screw	Acetal / With Insert

Indicates item not stocked at time of printing - Please enquire for lead time

E&OE Pricing and all details subject to change without notice - Copyright Miniature Bearings Australia Pty Ltd

MBA Size Listings are a guide to sizes only and must not be solely relied on for critical design information.

Gears - Blanks

Part Number	OD (D) mm	Face Width (S) mm	Bore (d) mm	A Diameter mm	Hub Diameter (D1) mm	Lightening holes centre diam. mm	Hub Projection (HL) mm	Locking Type	Material
	<i>inches</i>	<i>inches</i>	<i>inches</i>	<i>inches</i>	<i>inches</i>	<i>inches</i>	<i>inches</i>		
GBL-038-0300-1200-ACE	38.500 <i>1.516</i>	3.000 <i>0.118</i>	12.000 <i>0.472</i>	25.000 <i>0.984</i>	16.000 <i>0.630</i>		6.50 <i>0.256</i>	None	Acetal
# GBL-041-0318-0953-ACAL	41.275 <i>1.625</i>	3.175 <i>0.125</i>	9.525 <i>0.375</i>	Solid				None	Acetal Rim / Alum. Core
# GBL-042-0600-1000-ST	42.000 <i>1.654</i>	6.000 <i>0.236</i>	10X9 (D-BORE)		20.00 <i>0.787</i>		10.00 <i>0.394</i>	None	STEEL/D BORE
# GBL-042-1000-1000-ST	42.000 <i>1.654</i>	10.000 <i>0.394</i>	10X9 (D-BORE)		20.00 <i>0.787</i>		10.00 <i>0.394</i>	None	STEEL/D BORE
# GBL-044-0318-0318-ACB	44.450 <i>1.750</i>	3.175 <i>0.125</i>	3.175 <i>0.125</i>	Solid	19.05 <i>0.750</i>		12.70 <i>0.500</i>	2-56 Set Screw	Acetal / With Insert
# GBL-044-0318-0476-ACB	44.450 <i>1.750</i>	3.175 <i>0.125</i>	4.763 <i>0.188</i>	Solid	19.05 <i>0.750</i>		12.70 <i>0.500</i>	4-40 Set Screw	Acetal / With Insert
# GBL-044-0318-0635-ACE	44.450 <i>1.750</i>	3.175 <i>0.125</i>	6.350 <i>0.250</i>	Solid	19.05 <i>0.750</i>		12.70 <i>0.500</i>	None	Acetal / No Insert
# GBL-044-0318-0635-ACB	44.450 <i>1.750</i>	3.175 <i>0.125</i>	6.350 <i>0.250</i>	Solid	19.05 <i>0.750</i>		12.70 <i>0.500</i>	6-32 Set Screw	Acetal / With Insert
# GBL-044-0476-0318-ACB	44.450 <i>1.750</i>	4.762 <i>0.187</i>	3.175 <i>0.125</i>	Solid	19.05 <i>0.750</i>		12.70 <i>0.500</i>	2-56 Set Screw	Acetal / With Insert

Indicates item not stocked at time of printing - Please enquire for lead time

E&OE Pricing and all details subject to change without notice - Copyright Miniature Bearings Australia Pty Ltd

MBA Size Listings are a guide to sizes only and must not be solely relied on for critical design information.

Gears - Blanks

Part Number	OD (D) mm	Face Width (S) mm	Bore (d) mm	A Diameter mm	Hub Diameter (D1) mm	Lightening holes centre diam. mm	Hub Projection (HL) mm	Locking Type	Material
	<i>inches</i>	<i>inches</i>	<i>inches</i>	<i>inches</i>	<i>inches</i>	<i>inches</i>	<i>inches</i>		
# GBL-044-0476-0476-ACB	44.450	4.762	4.763	Solid	19.05		12.70	4-40 Set Screw	Acetal / With Insert
	<i>1.750</i>	<i>0.187</i>	<i>0.188</i>		<i>0.750</i>		<i>0.500</i>		
# GBL-044-0476-0635-ACB	44.450	4.762	6.350	Solid	19.05		12.70	6-32 Set Screw	Acetal / With Insert
	<i>1.750</i>	<i>0.187</i>	<i>0.250</i>		<i>0.750</i>		<i>0.500</i>		
# GBL-044-0476-0635-ACE	44.450	4.762	6.350	Solid	19.05		12.70	None	Acetal / No Insert
	<i>1.750</i>	<i>0.187</i>	<i>0.250</i>		<i>0.750</i>		<i>0.500</i>		
# GBL-044-0635-0476-ACB	44.450	6.350	4.763	Solid	19.05		12.70	2-56 Set Screw	Acetal / With Insert
	<i>1.750</i>	<i>0.250</i>	<i>0.188</i>		<i>0.750</i>		<i>0.500</i>		
# GBL-044-0635-0635-ACB	44.450	6.350	6.350	Solid	19.05		12.70	4-40 Set Screw	Acetal / With Insert
	<i>1.750</i>	<i>0.250</i>	<i>0.250</i>		<i>0.750</i>		<i>0.500</i>		
# GBL-044-0635-0635-ACE	44.450	6.350	6.350	Solid	19.05		12.70	None	Acetal / No Insert
	<i>1.750</i>	<i>0.250</i>	<i>0.250</i>		<i>0.750</i>		<i>0.500</i>		
# GBL-044-0635-0794-ACB	44.450	6.350	7.938	Solid	19.05		12.70	6-32 Set Screw	Acetal / With Insert
	<i>1.750</i>	<i>0.250</i>	<i>0.313</i>		<i>0.750</i>		<i>0.500</i>		
GBL-044-0480-0400-ACB	44.500	4.800	4.000		19.000		12.70	Grub Screw	Acetal with Brass Insert
	<i>1.752</i>	<i>0.189</i>	<i>0.157</i>		<i>0.748</i>		<i>0.500</i>		
# GBL-044-0480-0500-ACB	44.500	4.800	5.000	Solid	19.00		12.70	M2.5 Set Screw	Acetal / With Insert
	<i>1.752</i>	<i>0.189</i>	<i>0.197</i>		<i>0.748</i>		<i>0.500</i>		

Indicates item not stocked at time of printing - Please enquire for lead time

E&OE Pricing and all details subject to change without notice - Copyright Miniature Bearings Australia Pty Ltd

MBA Size Listings are a guide to sizes only and must not be solely relied on for critical design information.

Gears - Blanks

Part Number	OD (D) mm	Face Width (S) mm	Bore (d) mm	A Diameter mm	Hub Diameter (D1) mm	Lightening holes centre diam. mm	Hub Projection (HL) mm	Locking Type	Material
	<i>inches</i>	<i>inches</i>	<i>inches</i>	<i>inches</i>	<i>inches</i>	<i>inches</i>	<i>inches</i>		
# GBL-044-0480-0600-ACB	44.500	4.800	6.000	Solid	19.00		12.70	M3 Set Screw	Acetal / With Insert
	<i>1.752</i>	<i>0.189</i>	<i>0.236</i>		<i>0.748</i>		<i>0.500</i>		
# GBL-044-0480-0800-ACB	44.500	4.800	8.000	Solid	19.00		12.70	M4 Set Screw	Acetal / With Insert
	<i>1.752</i>	<i>0.189</i>	<i>0.315</i>		<i>0.748</i>		<i>0.500</i>		
# GBL-044-0300-0300-ACB	44.800	3.000	3.000	29.000	19.00		6.50	M2.5 Set Screw	Acetal / With Insert
	<i>1.764</i>	<i>0.118</i>	<i>0.118</i>	<i>1.142</i>	<i>0.748</i>		<i>0.256</i>		
# GBL-044-0300-0400-ACB	44.800	3.000	4.000	29.000	19.00		6.50	M3 Set Screw	Acetal / With Insert
	<i>1.764</i>	<i>0.118</i>	<i>0.157</i>	<i>1.142</i>	<i>0.748</i>		<i>0.256</i>		
GBL-044-0300-0500-ACB	44.800	3.000	5.000	29.000	19.00		6.50	M3 Set Screw	Acetal / With Insert
	<i>1.764</i>	<i>0.118</i>	<i>0.197</i>	<i>1.142</i>	<i>0.748</i>		<i>0.256</i>		
GBL-044-0300-0600-ACB	44.800	3.000	6.000	29.000	19.000		6.50	Grub Screw	Acetal with Brass Insert
	<i>1.764</i>	<i>0.118</i>	<i>0.236</i>	<i>1.142</i>	<i>0.748</i>		<i>0.256</i>		
GBL-044-0300-1200-ACE	44.800	3.000	12.000	29.000	19.000		6.50	None	Acetal
	<i>1.764</i>	<i>0.118</i>	<i>0.472</i>	<i>1.142</i>	<i>0.748</i>		<i>0.256</i>		
# GBL-044.83-03.18-03.18-ACB	44.831	3.175	3.175	28.575	19.05		6.35	2-56 Set Screw	Acetal / With Insert
	<i>1.765</i>	<i>0.125</i>	<i>0.125</i>	<i>1.125</i>	<i>0.750</i>		<i>0.250</i>		

Indicates item not stocked at time of printing - Please enquire for lead time

E&OE Pricing and all details subject to change without notice - Copyright Miniature Bearings Australia Pty Ltd

MBA Size Listings are a guide to sizes only and must not be solely relied on for critical design information.

Gears - Blanks

Part Number	OD (D) mm	Face Width (S) mm	Bore (d) mm	A Diameter mm	Hub Diameter (D1) mm	Lightening holes centre diam. mm	Hub Projection (HL) mm	Locking Type	Material
	<i>inches</i>	<i>inches</i>	<i>inches</i>	<i>inches</i>	<i>inches</i>	<i>inches</i>	<i>inches</i>		
# GBL-044.83-03.18-04.76-ACB	44.831	3.175	4.763	28.575	19.05		6.35	4-40 Set Screw	Acetal / With Insert
	<i>1.765</i>	<i>0.125</i>	<i>0.188</i>	<i>1.125</i>	<i>0.750</i>		<i>0.250</i>		
# GBL-044.83-03.18-06.35-ACB	44.831	3.175	6.350	28.575	19.05		6.35	6-32 Set Screw	Acetal / With Insert
	<i>1.765</i>	<i>0.125</i>	<i>0.250</i>	<i>1.125</i>	<i>0.750</i>		<i>0.250</i>		
# GBL-044-0318-1110-ACE	44.831	3.175	11.100	28.575	19.05		6.35	None	Acetal / No Insert
	<i>1.765</i>	<i>0.125</i>	<i>0.437</i>	<i>1.125</i>	<i>0.750</i>		<i>0.250</i>		
# GBL-047-0318-0953-ACAL	47.625	3.175	9.525	Solid				None	Acetal Rim / Alum. Core
	<i>1.875</i>	<i>0.125</i>	<i>0.375</i>						
# GBL-052-0600-1000-ST	52.000	6.000	10X9 (D-BORE)		20.00		10.00	None	STEEL/D BORE
	<i>2.047</i>	<i>0.236</i>			<i>0.787</i>		<i>0.394</i>		
# GBL-052-1000-1000-ST	52.000	10.000	10X9 (D-BORE)		20.00		10.00	None	STEEL/D BORE
	<i>2.047</i>	<i>0.394</i>			<i>0.787</i>		<i>0.394</i>		
# GBL-052-1000-1200-ST	52.000	10.000	12X10.8 (D-BORE)		24.00		10.00	None	STEEL/D BORE
	<i>2.047</i>	<i>0.394</i>			<i>0.945</i>		<i>0.394</i>		
# GBL-052-1400-1200-ST	52.000	14.000	12X10.8 (D-BORE)		24.00		10.00	None	STEEL/D BORE
	<i>2.047</i>	<i>0.551</i>			<i>0.945</i>		<i>0.394</i>		
# GBL-053-0318-0953-ACAL	53.975	3.175	9.525	Solid		20.64	5.56	None	Acetal Rim / Alum. Core
	<i>2.125</i>	<i>0.125</i>	<i>0.375</i>			<i>0.813</i>	<i>0.219</i>		

Indicates item not stocked at time of printing - Please enquire for lead time

E&OE Pricing and all details subject to change without notice - Copyright Miniature Bearings Australia Pty Ltd

MBA Size Listings are a guide to sizes only and must not be solely relied on for critical design information.

Gears - Blanks

Part Number	OD (D) mm	Face Width (S) mm	Bore (d) mm	A Diameter mm	Hub Diameter (D1) mm	Lightening holes centre diam. mm	Hub Projection (HL) mm	Locking Type	Material
	<i>inches</i>	<i>inches</i>	<i>inches</i>	<i>inches</i>	<i>inches</i>	<i>inches</i>	<i>inches</i>		
# GBL-054-0318-0318-ACB	54.356	3.175	3.175	34.925	19.05		6.35	2-56 Set Screw	Acetal / With Insert
	<i>2.140</i>	<i>0.125</i>	<i>0.125</i>	<i>1.375</i>	<i>0.750</i>		<i>0.250</i>		
# GBL-054-0318-0476-ACB	54.356	3.175	4.763	34.925	19.05		6.35	4-40 Set Screw	Acetal / With Insert
	<i>2.140</i>	<i>0.125</i>	<i>0.188</i>	<i>1.375</i>	<i>0.750</i>		<i>0.250</i>		
# GBL-054-0318-0635-ACB	54.356	3.175	6.350	34.925	19.05		6.35	6-32 Set Screw	Acetal / With Insert
	<i>2.140</i>	<i>0.125</i>	<i>0.250</i>	<i>1.375</i>	<i>0.750</i>		<i>0.250</i>		
# GBL-054-0318-1110-ACE	54.356	3.175	11.100	34.925	19.05		6.35	None	Acetal / No Insert
	<i>2.140</i>	<i>0.125</i>	<i>0.437</i>	<i>1.375</i>	<i>0.750</i>		<i>0.250</i>		
# GBL-054-0300-0300-ACB	54.400	3.000	3.000	35.000	19.00		6.50	M2.5 Set Screw	Acetal / With Insert
	<i>2.142</i>	<i>0.118</i>	<i>0.118</i>	<i>1.378</i>	<i>0.748</i>		<i>0.256</i>		
# GBL-054-0300-0400-ACB	54.400	3.000	4.000	35.000	19.00		6.50	M3 Set Screw	Acetal / With Insert
	<i>2.142</i>	<i>0.118</i>	<i>0.157</i>	<i>1.378</i>	<i>0.748</i>		<i>0.256</i>		
# GBL-054-0300-0500-ACB	54.400	3.000	5.000	35.000	19.00		6.50	M3 Set Screw	Acetal / With Insert
	<i>2.142</i>	<i>0.118</i>	<i>0.197</i>	<i>1.378</i>	<i>0.748</i>		<i>0.256</i>		
# GBL-054-0300-0600-ACB	54.400	3.000	6.000	35.000	19.00		6.50	M3 Set Screw	Acetal / With Insert
	<i>2.142</i>	<i>0.118</i>	<i>0.236</i>	<i>1.378</i>	<i>0.748</i>		<i>0.256</i>		
# GBL-054-0300-1200-ACE	54.400	3.000	12.000	35.000	19.00		6.50	None	Acetal / No Insert
	<i>2.142</i>	<i>0.118</i>	<i>0.472</i>	<i>1.378</i>	<i>0.748</i>		<i>0.256</i>		

Indicates item not stocked at time of printing - Please enquire for lead time

E&OE Pricing and all details subject to change without notice - Copyright Miniature Bearings Australia Pty Ltd

MBA Size Listings are a guide to sizes only and must not be solely relied on for critical design information.

Gears - Blanks

Part Number	OD (D) mm	Face Width (S) mm	Bore (d) mm	A Diameter mm	Hub Diameter (D1) mm	Lightening holes centre diam. mm	Hub Projection (HL) mm	Locking Type	Material
	<i>inches</i>	<i>inches</i>	<i>inches</i>	<i>inches</i>	<i>inches</i>	<i>inches</i>	<i>inches</i>		
# GBL-060-0318-0953-ACAL	60.325	3.175	9.525	Solid		27.78	7.94	None	Acetal Rim / Alum. Core
	<i>2.375</i>	<i>0.125</i>	<i>0.375</i>			<i>1.094</i>	<i>0.313</i>		
# GBL-060-0300-0300-ACB	60.700	3.000	3.000	46.000	19.00		6.50	M2.5 Set Screw	Acetal / With Insert
	<i>2.390</i>	<i>0.118</i>	<i>0.118</i>	<i>1.811</i>	<i>0.748</i>		<i>0.256</i>		
# GBL-060-0300-0400-ACB	60.700	3.000	4.000	46.000	19.00		6.50	M3 Set Screw	Acetal / With Insert
	<i>2.390</i>	<i>0.118</i>	<i>0.157</i>	<i>1.811</i>	<i>0.748</i>		<i>0.256</i>		
# GBL-060-0300-0500-ACB	60.700	3.000	5.000	46.000	19.00		6.50	M3 Set Screw	Acetal / With Insert
	<i>2.390</i>	<i>0.118</i>	<i>0.197</i>	<i>1.811</i>	<i>0.748</i>		<i>0.256</i>		
# GBL-060-0300-0600-ACB	60.700	3.000	6.000	46.000	19.00		6.50	M3 Set Screw	Acetal / With Insert
	<i>2.390</i>	<i>0.118</i>	<i>0.236</i>	<i>1.811</i>	<i>0.748</i>		<i>0.256</i>		
# GBL-060-0300-1200-ACE	60.700	3.000	12.000	46.000	19.00		6.50	None	Acetal / No Insert
	<i>2.390</i>	<i>0.118</i>	<i>0.472</i>	<i>1.811</i>	<i>0.748</i>		<i>0.256</i>		
# GBL-060-0318-0318-ACB	60.706	3.175	3.175	46.038	19.05		6.35	2-56 Set Screw	Acetal / With Insert
	<i>2.390</i>	<i>0.125</i>	<i>0.125</i>	<i>1.813</i>	<i>0.750</i>		<i>0.250</i>		
# GBL-060-0318-0476-ACB	60.706	3.175	4.763	46.038	19.05		6.35	4-40 Set Screw	Acetal / With Insert
	<i>2.390</i>	<i>0.125</i>	<i>0.188</i>	<i>1.813</i>	<i>0.750</i>		<i>0.250</i>		

Indicates item not stocked at time of printing - Please enquire for lead time

E&OE Pricing and all details subject to change without notice - Copyright Miniature Bearings Australia Pty Ltd

MBA Size Listings are a guide to sizes only and must not be solely relied on for critical design information.

Gears - Blanks

Part Number	OD (D) mm	Face Width (S) mm	Bore (d) mm	A Diameter mm	Hub Diameter (D1) mm	Lightening holes centre diam. mm	Hub Projection (HL) mm	Locking Type	Material
	<i>inches</i>	<i>inches</i>	<i>inches</i>	<i>inches</i>	<i>inches</i>	<i>inches</i>	<i>inches</i>		
# GBL-060-0318-0635-ACB	60.706	3.175	6.350	46.038	19.05		6.35	6-32 Set Screw	Acetal / With Insert
	<i>2.390</i>	<i>0.125</i>	<i>0.250</i>	<i>1.813</i>	<i>0.750</i>		<i>0.250</i>		
# GBL-060-0318-1110-ACE	60.706	3.175	11.100	46.038	19.05		6.35	None	Acetal / No Insert
	<i>2.390</i>	<i>0.125</i>	<i>0.437</i>	<i>1.813</i>	<i>0.750</i>		<i>0.250</i>		
# GBL-062-0600-1000-ST	62.000	6.000	10X9 (D-BORE)		20.00		10.00	None	STEEL/D BORE
	<i>2.441</i>	<i>0.236</i>			<i>0.787</i>		<i>0.394</i>		
# GBL-062-1000-1000-ST	62.000	10.000	10X9 (D-BORE)		20.00		10.00	None	STEEL/D BORE
	<i>2.441</i>	<i>0.394</i>			<i>0.787</i>		<i>0.394</i>		
# GBL-062-1000-1200-ST	62.000	10.000	12X10.8 (D-BORE)		24.00		10.00	None	STEEL/D BORE
	<i>2.441</i>	<i>0.394</i>			<i>0.945</i>		<i>0.394</i>		
# GBL-066-0318-0953-ACAL	66.675	3.175	9.525	Solid		34.93	9.53	None	Acetal Rim / Alum. Core
	<i>2.625</i>	<i>0.125</i>	<i>0.375</i>			<i>1.375</i>	<i>0.375</i>		
# GBL-069-0318-0318-ACB	69.850	3.175	3.175	Solid	25.40		12.70	2-56 Set Screw	Acetal / With Insert
	<i>2.750</i>	<i>0.125</i>	<i>0.125</i>		<i>1.000</i>		<i>0.500</i>		
# GBL-069-0318-0476-ACB	69.850	3.175	4.763	Solid	25.40		12.70	4-40 Set Screw	Acetal / With Insert
	<i>2.750</i>	<i>0.125</i>	<i>0.188</i>		<i>1.000</i>		<i>0.500</i>		
# GBL-069-0318-0635-ACB	69.850	3.175	6.350	Solid	25.40		12.70	6-32 Set Screw	Acetal / With Insert
	<i>2.750</i>	<i>0.125</i>	<i>0.250</i>		<i>1.000</i>		<i>0.500</i>		

Indicates item not stocked at time of printing - Please enquire for lead time

E&OE Pricing and all details subject to change without notice - Copyright Miniature Bearings Australia Pty Ltd

MBA Size Listings are a guide to sizes only and must not be solely relied on for critical design information.

Gears - Blanks

Part Number	OD (D) mm	Face Width (S) mm	Bore (d) mm	A Diameter mm	Hub Diameter (D1) mm	Lightening holes centre diam. mm	Hub Projection (HL) mm	Locking Type	Material
	<i>inches</i>	<i>inches</i>	<i>inches</i>	<i>inches</i>	<i>inches</i>	<i>inches</i>	<i>inches</i>		
# GBL-069-0318-0635-ACE	69.850 <i>2.750</i>	3.175 <i>0.125</i>	6.350 <i>0.250</i>	Solid	25.40 <i>1.000</i>		12.70 <i>0.500</i>	None	Acetal / No Insert
# GBL-069-0476-0318-ACB	69.850 <i>2.750</i>	4.762 <i>0.187</i>	3.175 <i>0.125</i>	Solid	25.40 <i>1.000</i>		12.70 <i>0.500</i>	2-56 Set Screw	Acetal / With Insert
# GBL-069-0476-0476-ACB	69.850 <i>2.750</i>	4.762 <i>0.187</i>	4.763 <i>0.188</i>	Solid	25.40 <i>1.000</i>		12.70 <i>0.500</i>	4-40 Set Screw	Acetal / With Insert
# GBL-069-0476-0635-ACE	69.850 <i>2.750</i>	4.762 <i>0.187</i>	6.350 <i>0.250</i>	Solid	25.40 <i>1.000</i>		12.70 <i>0.500</i>	None	Acetal / No Insert
# GBL-069-0476-0635-ACB	69.850 <i>2.750</i>	4.762 <i>0.187</i>	6.350 <i>0.250</i>	Solid	25.40 <i>1.000</i>		12.70 <i>0.500</i>	6-32 Set Screw	Acetal / With Insert
# GBL-069-0635-0476-ACB	69.850 <i>2.750</i>	6.350 <i>0.250</i>	4.763 <i>0.188</i>	Solid	25.40 <i>1.000</i>		12.70 <i>0.500</i>	2-56 Set Screw	Acetal / With Insert
# GBL-069-0635-0635-ACE	69.850 <i>2.750</i>	6.350 <i>0.250</i>	6.350 <i>0.250</i>	Solid	25.40 <i>1.000</i>		12.70 <i>0.500</i>	None	Acetal / No Insert
# GBL-069-0635-0635-ACB	69.850 <i>2.750</i>	6.350 <i>0.250</i>	6.350 <i>0.250</i>	Solid	25.40 <i>1.000</i>		12.70 <i>0.500</i>	4-40 Set Screw	Acetal / With Insert
# GBL-069-0635-0794-ACB	69.850 <i>2.750</i>	6.350 <i>0.250</i>	7.938 <i>0.313</i>	Solid	25.40 <i>1.000</i>		12.70 <i>0.500</i>	6-32 Set Screw	Acetal / With Insert

Indicates item not stocked at time of printing - Please enquire for lead time

E&OE Pricing and all details subject to change without notice - Copyright Miniature Bearings Australia Pty Ltd

MBA Size Listings are a guide to sizes only and must not be solely relied on for critical design information.

Gears - Blanks

Part Number	OD (D) mm	Face Width (S) mm	Bore (d) mm	A Diameter mm	Hub Diameter (D1) mm	Lightening holes centre diam. mm	Hub Projection (HL) mm	Locking Type	Material
	<i>inches</i>	<i>inches</i>	<i>inches</i>	<i>inches</i>	<i>inches</i>	<i>inches</i>	<i>inches</i>		
# GBL-070-0480-0400-ACB	70.000	4.800	4.000	Solid	25.00		12.70	M2.5 Set Screw	Acetal / With Insert
	<i>2.756</i>	<i>0.189</i>	<i>0.157</i>		<i>0.984</i>		<i>0.500</i>		
# GBL-070-0480-0500-ACB	70.000	4.800	5.000	Solid	25.00		12.70	M2.5 Set Screw	Acetal / With Insert
	<i>2.756</i>	<i>0.189</i>	<i>0.197</i>		<i>0.984</i>		<i>0.500</i>		
# GBL-070-0480-0600-ACB	70.000	4.800	6.000	Solid	25.00		12.70	M3 Set Screw	Acetal / With Insert
	<i>2.756</i>	<i>0.189</i>	<i>0.236</i>		<i>0.984</i>		<i>0.500</i>		
# GBL-070-0480-0800-ACB	70.000	4.800	8.000	Solid	25.00		12.70	M4 Set Screw	Acetal / With Insert
	<i>2.756</i>	<i>0.189</i>	<i>0.315</i>		<i>0.984</i>		<i>0.500</i>		
# GBL-070-0300-0300-ACB	70.200	3.000	3.000	51.000	19.00		6.50	M2.5 Set Screw	Acetal / With Insert
	<i>2.764</i>	<i>0.118</i>	<i>0.118</i>	<i>2.008</i>	<i>0.748</i>		<i>0.256</i>		
# GBL-070-0300-0400-ACB	70.200	3.000	4.000	51.000	19.00		6.50	M3 Set Screw	Acetal / With Insert
	<i>2.764</i>	<i>0.118</i>	<i>0.157</i>	<i>2.008</i>	<i>0.748</i>		<i>0.256</i>		
# GBL-070-0300-0500-ACB	70.200	3.000	5.000	51.000	19.00		6.50	M3 Set Screw	Acetal / With Insert
	<i>2.764</i>	<i>0.118</i>	<i>0.197</i>	<i>2.008</i>	<i>0.748</i>		<i>0.256</i>		
# GBL-070-0300-0600-ACB	70.200	3.000	6.000	51.000	19.00		6.50	M3 Set Screw	Acetal / With Insert
	<i>2.764</i>	<i>0.118</i>	<i>0.236</i>	<i>2.008</i>	<i>0.748</i>		<i>0.256</i>		

Indicates item not stocked at time of printing - Please enquire for lead time

E&OE Pricing and all details subject to change without notice - Copyright Miniature Bearings Australia Pty Ltd

MBA Size Listings are a guide to sizes only and must not be solely relied on for critical design information.

Gears - Blanks

Part Number	OD (D) mm	Face Width (S) mm	Bore (d) mm	A Diameter mm	Hub Diameter (D1) mm	Lightening holes centre diam. mm	Hub Projection (HL) mm	Locking Type	Material
	<i>inches</i>	<i>inches</i>	<i>inches</i>	<i>inches</i>	<i>inches</i>	<i>inches</i>	<i>inches</i>		
# GBL-070-0300-1200-ACE	70.200 <i>2.764</i>	3.000 <i>0.118</i>	12.000 <i>0.472</i>	51.000 <i>2.008</i>	19.00 <i>0.748</i>		6.50 <i>0.256</i>	None	Acetal / No Insert
# GBL-070-0318-0318-ACB	70.231 <i>2.765</i>	3.175 <i>0.125</i>	3.175 <i>0.125</i>	50.800 <i>2.000</i>	19.05 <i>0.750</i>		6.35 <i>0.250</i>	2-56 Set Screw	Acetal / With Insert
# GBL-070-0318-0476-ACB	70.231 <i>2.765</i>	3.175 <i>0.125</i>	4.763 <i>0.188</i>	50.800 <i>2.000</i>	19.05 <i>0.750</i>		6.35 <i>0.250</i>	4-40 Set Screw	Acetal / With Insert
# GBL-070-0318-0635-ACB	70.231 <i>2.765</i>	3.175 <i>0.125</i>	6.350 <i>0.250</i>	50.800 <i>2.000</i>	19.05 <i>0.750</i>		6.35 <i>0.250</i>	6-32 Set Screw	Acetal / With Insert
# GBL-070-0318-1110-ACE	70.231 <i>2.765</i>	3.175 <i>0.125</i>	11.100 <i>0.437</i>	50.800 <i>2.000</i>	19.05 <i>0.750</i>		6.35 <i>0.250</i>	None	Acetal / No Insert
# GBL-073-0318-0953-ACAL	73.025 <i>2.875</i>	3.175 <i>0.125</i>	9.525 <i>0.375</i>	Solid		34.93 <i>1.375</i>	9.53 <i>0.375</i>	None	Acetal Rim / Alum. Core
# GBL-074-1000-1000-ST	74.000 <i>2.913</i>	10.000 <i>0.394</i>	10X9 (D-BORE)		20.00 <i>0.787</i>		10.00 <i>0.394</i>	None	STEEL/D BORE
# GBL-079-0318-0953-ACAL	79.375 <i>3.125</i>	3.175 <i>0.125</i>	9.525 <i>0.375</i>	Solid		44.45 <i>1.750</i>	9.53 <i>0.375</i>	None	Acetal Rim / Alum. Core
# GBL-085-0318-0953-ACAL	85.725 <i>3.375</i>	3.175 <i>0.125</i>	9.525 <i>0.375</i>	Solid		44.45 <i>1.750</i>	9.53 <i>0.375</i>	None	Acetal Rim / Alum. Core

Indicates item not stocked at time of printing - Please enquire for lead time

E&OE Pricing and all details subject to change without notice - Copyright Miniature Bearings Australia Pty Ltd

MBA Size Listings are a guide to sizes only and must not be solely relied on for critical design information.

Gears - Blanks

Part Number	OD (D) mm	Face Width (S) mm	Bore (d) mm	A Diameter mm	Hub Diameter (D1) mm	Lightening holes centre diam. mm	Hub Projection (HL) mm	Locking Type	Material
	<i>inches</i>	<i>inches</i>	<i>inches</i>	<i>inches</i>	<i>inches</i>	<i>inches</i>	<i>inches</i>		
# GBL-092-0318-0953-ACAL	92.075	3.175	9.525	Solid		44.45	9.53	None	Acetal Rim / Alum. Core
	<i>3.625</i>	<i>0.125</i>	<i>0.375</i>			<i>1.750</i>	<i>0.375</i>		
# GBL-098-0318-0953-ACAL	98.425	3.175	9.525	Solid		44.45	9.53	None	Acetal Rim / Alum. Core
	<i>3.875</i>	<i>0.125</i>	<i>0.375</i>			<i>1.750</i>	<i>0.375</i>		
# GBL-102-1000-1000-ST	102.000	10.000	10X9 (D-BORE)		20.00		10.00	None	STEEL/D BORE
	<i>4.016</i>	<i>0.394</i>			<i>0.787</i>		<i>0.394</i>		
# GBL-104-0318-0953-ACAL	104.775	3.175	9.525	Solid		44.45	9.53	None	Acetal Rim / Alum. Core
	<i>4.125</i>	<i>0.125</i>	<i>0.375</i>			<i>1.750</i>	<i>0.375</i>		

Indicates item not stocked at time of printing - Please enquire for lead time

E&OE Pricing and all details subject to change without notice - Copyright Miniature Bearings Australia Pty Ltd

MBA Size Listings are a guide to sizes only and must not be solely relied on for critical design information.



DISTRIBUTED BY

Ask us to put your name and address here

<http://www.minibearings.com.au/product>

Ph +61 7 3245 7977

Fax +61 7 3245 1017

Catalogue requests to catalogues@minibearings.com.au

