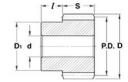




MBA

Gears - Helical - 48 Normal Pitch



Gears - Helical - 48 Normal Pitch

Part Number	Teeth No.	Bore mm	Outside Diameter mm	Pitch Diameter mm	Face Width mm	Hub Projection mm	Pressure Angle Deg.	Helix Angle / Direction Deg.	Quality Class	Material
		<i>inches</i>	<i>inches</i>	<i>inches</i>	<i>inches</i>	<i>inches</i>				
# GHR48-20-0475B0635-303	20	6.350 / With Set Screw	16.03 <i>0.631</i>	14.97 <i>0.589</i>	4.75 <i>0.187</i>	6.35 <i>0.250</i>	20	45 / Right Hand	AGMA Q10	303 Stainless Steel
# GHL48-20-0475B0635-303	20	6.350 / With Set Screw	16.03 <i>0.631</i>	14.97 <i>0.589</i>	4.75 <i>0.187</i>	6.35 <i>0.250</i>	20	45 / Left Hand	AGMA Q10	303 Stainless Steel
# GHR48-020-0475B0635-AL	20	6.35 <i>0.250</i>	16.03 <i>0.631</i>	14.97 <i>0.589</i>	4.75 <i>0.187</i>	6.35 <i>0.250</i>	20	45 / Right Hand	AGMA Q10	2024 Aluminium Anodized

Indicates item not stocked at time of printing - Please enquire for lead time

E&OE Pricing and all details subject to change without notice - Copyright Miniature Bearings Australia Pty Ltd

MBA Size Listings are a guide to sizes only and must not be solely relied on for critical design information.

Gears - Helical - 48 Normal Pitch

Part Number	Teeth No.	Bore mm	Outside Diameter mm	Pitch Diameter mm	Face Width mm	Hub Projection mm	Pressure Angle Deg.	Helix Angle / Direction Deg.	Quality Class	Material
		<i>inches</i>	<i>inches</i>	<i>inches</i>	<i>inches</i>	<i>inches</i>				
# GHL48-020-0476B0635-AL	20	6.35	16.03	14.97	4.76	6.35	20	45 / Left Hand	AGMA Q10	2024 Aluminium Anodized
		<i>0.250</i>	<i>0.631</i>	<i>0.589</i>	<i>0.187</i>	<i>0.250</i>				
# GHL48-025-0476B0635-AL	25	6.35	19.76	18.71	4.76	6.35	20	45 / Left Hand	AGMA Q10	2024 Aluminium Anodized
		<i>0.250</i>	<i>0.778</i>	<i>0.737</i>	<i>0.187</i>	<i>0.250</i>				
# GHR48-025-0475B0635-AL	25	6.35	19.76	18.71	4.75	6.35	20	45 / Right Hand	AGMA Q10	2024 Aluminium Anodized
		<i>0.250</i>	<i>0.778</i>	<i>0.737</i>	<i>0.187</i>	<i>0.250</i>				
# GHR48-25-0475B0635-303	25	6.350 / With Set Screw	19.76	18.71	4.75	6.35	20	45 / Right Hand	AGMA Q10	303 Stainless Steel
			<i>0.778</i>	<i>0.737</i>	<i>0.187</i>	<i>0.250</i>				
# GHL48-25-0475B0635-303	25	6.350 / With Set Screw	19.76	18.71	4.75	6.35	20	45 / Left Hand	AGMA Q10	303 Stainless Steel
			<i>0.778</i>	<i>0.737</i>	<i>0.187</i>	<i>0.250</i>				
# GHR48-30-0475B0635-303	30	6.350 / With Set Screw	23.50	22.45	4.75	6.35	20	45 / Right Hand	AGMA Q10	303 Stainless Steel
			<i>0.925</i>	<i>0.884</i>	<i>0.187</i>	<i>0.250</i>				
# GHL48-30-0475B0635-303	30	6.350 / With Set Screw	23.50	22.45	4.75	6.35	20	45 / Left Hand	AGMA Q10	303 Stainless Steel
			<i>0.925</i>	<i>0.884</i>	<i>0.187</i>	<i>0.250</i>				

Indicates item not stocked at time of printing - Please enquire for lead time

E&OE Pricing and all details subject to change without notice - Copyright Miniature Bearings Australia Pty Ltd

MBA Size Listings are a guide to sizes only and must not be solely relied on for critical design information.

Gears - Helical - 48 Normal Pitch

Part Number	Teeth No.	Bore mm	Outside Diameter mm	Pitch Diameter mm	Face Width mm	Hub Projection mm	Pressure Angle Deg.	Helix Angle / Direction Deg.	Quality Class	Material
		<i>inches</i>	<i>inches</i>	<i>inches</i>	<i>inches</i>	<i>inches</i>				
# GHR48-030-0475B0635-AL	30	6.35	23.50	22.45	4.75	6.35	20	45 / Right Hand	AGMA Q10	2024 Aluminium Anodized
		<i>0.250</i>	<i>0.925</i>	<i>0.884</i>	<i>0.187</i>	<i>0.250</i>				
# GHL48-030-0476B0635-AL	30	6.35	23.50	22.45	4.76	6.35	20	45 / Left Hand	AGMA Q10	2024 Aluminium Anodized
		<i>0.250</i>	<i>0.925</i>	<i>0.884</i>	<i>0.187</i>	<i>0.250</i>				
# GHR48-35-0475B0635-303	35	6.350 / With Set Screw	27.23	26.19	4.75	6.35	20	45 / Right Hand	AGMA Q10	303 Stainless Steel
			<i>1.072</i>	<i>1.031</i>	<i>0.187</i>	<i>0.250</i>				
# GHL48-35-0475B0635-303	35	6.350 / With Set Screw	27.23	26.19	4.75	6.35	20	45 / Left Hand	AGMA Q10	303 Stainless Steel
			<i>1.072</i>	<i>1.031</i>	<i>0.187</i>	<i>0.250</i>				
# GHR48-035-0475B0635-AL	35	6.35	27.23	26.19	4.75	6.35	20	45 / Right Hand	AGMA Q10	2024 Aluminium Anodized
		<i>0.250</i>	<i>1.072</i>	<i>1.031</i>	<i>0.187</i>	<i>0.250</i>				
# GHL48-035-0476B0635-AL	35	6.35	27.23	26.19	4.76	6.35	20	45 / Left Hand	AGMA Q10	2024 Aluminium Anodized
		<i>0.250</i>	<i>1.072</i>	<i>1.031</i>	<i>0.187</i>	<i>0.250</i>				
# GHR48-40-0475B0635-303	40	6.350 / With Set Screw	30.99	29.93	4.75	6.35	20	45 / Right Hand	AGMA Q10	303 Stainless Steel
			<i>1.220</i>	<i>1.178</i>	<i>0.187</i>	<i>0.250</i>				

Indicates item not stocked at time of printing - Please enquire for lead time

E&OE Pricing and all details subject to change without notice - Copyright Miniature Bearings Australia Pty Ltd

MBA Size Listings are a guide to sizes only and must not be solely relied on for critical design information.

Gears - Helical - 48 Normal Pitch

Part Number	Teeth No.	Bore mm	Outside Diameter mm	Pitch Diameter mm	Face Width mm	Hub Projection mm	Pressure Angle Deg.	Helix Angle / Direction Deg.	Quality Class	Material
		<i>inches</i>	<i>inches</i>	<i>inches</i>	<i>inches</i>	<i>inches</i>				
# GHL48-40-0475B0635-303	40	6.350 / With Set Screw	30.99 <i>1.220</i>	29.93 <i>1.178</i>	4.75 <i>0.187</i>	6.35 <i>0.250</i>	20	45 / Left Hand	AGMA Q10	303 Stainless Steel
# GHR48-040-0475B0635-AL	40	6.35 <i>0.250</i>	30.99 <i>1.220</i>	29.93 <i>1.178</i>	4.75 <i>0.187</i>	6.35 <i>0.250</i>	20	45 / Right Hand	AGMA Q10	2024 Aluminium Anodized
# GHL48-040-0476B0635-AL	40	6.35 <i>0.250</i>	30.99 <i>1.220</i>	29.93 <i>1.178</i>	4.76 <i>0.187</i>	6.35 <i>0.250</i>	20	45 / Left Hand	AGMA Q10	2024 Aluminium Anodized
# GHR48-045-0475B0635-AL	45	6.35 <i>0.250</i>	34.72 <i>1.367</i>	33.68 <i>1.326</i>	4.75 <i>0.187</i>	6.35 <i>0.250</i>	20	45 / Right Hand	AGMA Q10	2024 Aluminium Anodized
# GHL48-045-0476B0635-AL	45	6.35 <i>0.250</i>	34.72 <i>1.367</i>	33.68 <i>1.326</i>	4.76 <i>0.187</i>	6.35 <i>0.250</i>	20	45 / Left Hand	AGMA Q10	2024 Aluminium Anodized
# GHL48-45-0475B0635-303	45	6.350 / With Set Screw	34.72 <i>1.367</i>	33.68 <i>1.326</i>	4.75 <i>0.187</i>	6.35 <i>0.250</i>	20	45 / Left Hand	AGMA Q10	303 Stainless Steel
# GHR48-45-0475B0635-303	45	6.350 / With Set Screw	34.72 <i>1.367</i>	33.68 <i>1.326</i>	4.75 <i>0.187</i>	6.35 <i>0.250</i>	20	45 / Right Hand	AGMA Q10	303 Stainless Steel

Indicates item not stocked at time of printing - Please enquire for lead time

E&OE Pricing and all details subject to change without notice - Copyright Miniature Bearings Australia Pty Ltd

MBA Size Listings are a guide to sizes only and must not be solely relied on for critical design information.

Gears - Helical - 48 Normal Pitch

Part Number	Teeth No.	Bore mm	Outside Diameter mm	Pitch Diameter mm	Face Width mm	Hub Projection mm	Pressure Angle Deg.	Helix Angle / Direction Deg.	Quality Class	Material
		<i>inches</i>	<i>inches</i>	<i>inches</i>	<i>inches</i>	<i>inches</i>				
# GHR48-50-0475B0635-303	50	6.350 / With Set Screw	38.46 <i>1.514</i>	37.41 <i>1.473</i>	4.75 <i>0.187</i>	6.35 <i>0.250</i>	20	45 / Right Hand	AGMA Q10	303 Stainless Steel
# GHL48-50-0475B0635-303	50	6.350 / With Set Screw	38.46 <i>1.514</i>	37.41 <i>1.473</i>	4.75 <i>0.187</i>	6.35 <i>0.250</i>	20	45 / Left Hand	AGMA Q10	303 Stainless Steel
# GHR48-050-0475B0635-AL	50	6.35 <i>0.250</i>	38.46 <i>1.514</i>	37.41 <i>1.473</i>	4.75 <i>0.187</i>	6.35 <i>0.250</i>	20	45 / Right Hand	AGMA Q10	2024 Aluminium Anodized
# GHL48-050-0476B0635-AL	50	6.35 <i>0.250</i>	38.46 <i>1.514</i>	37.41 <i>1.473</i>	4.76 <i>0.187</i>	6.35 <i>0.250</i>	20	45 / Left Hand	AGMA Q10	2024 Aluminium Anodized
# GHR48-60-0475B0635-303	60	6.350 / With Set Screw	45.95 <i>1.809</i>	44.90 <i>1.768</i>	4.75 <i>0.187</i>	6.35 <i>0.250</i>	20	45 / Right Hand	AGMA Q10	303 Stainless Steel
# GHL48-60-0475B0635-303	60	6.350 / With Set Screw	45.95 <i>1.809</i>	44.90 <i>1.768</i>	4.75 <i>0.187</i>	6.35 <i>0.250</i>	20	45 / Left Hand	AGMA Q10	303 Stainless Steel
# GHL48-060-0476B0635-AL	60	6.35 <i>0.250</i>	45.95 <i>1.809</i>	44.90 <i>1.768</i>	4.76 <i>0.187</i>	6.35 <i>0.250</i>	20	45 / Left Hand	AGMA Q10	2024 Aluminium Anodized

Indicates item not stocked at time of printing - Please enquire for lead time

E&OE Pricing and all details subject to change without notice - Copyright Miniature Bearings Australia Pty Ltd

MBA Size Listings are a guide to sizes only and must not be solely relied on for critical design information.

Gears - Helical - 48 Normal Pitch

Part Number	Teeth No.	Bore mm	Outside Diameter mm	Pitch Diameter mm	Face Width mm	Hub Projection mm	Pressure Angle Deg.	Helix Angle / Direction Deg.	Quality Class	Material
		<i>inches</i>	<i>inches</i>	<i>inches</i>	<i>inches</i>	<i>inches</i>				
# GHR48-060-0475B0635-AL	60	6.35	45.95	44.90	4.75	6.35	20	45 / Right Hand	AGMA Q10	2024 Aluminium Anodized
		<i>0.250</i>	<i>1.809</i>	<i>1.768</i>	<i>0.187</i>	<i>0.250</i>				
# GHL48-070-0476B0635-AL	70	6.35	53.44	52.38	4.76	6.35	20	45 / Left Hand	AGMA Q10	2024 Aluminium Anodized
		<i>0.250</i>	<i>2.104</i>	<i>2.062</i>	<i>0.187</i>	<i>0.250</i>				
# GHR48-070-0475B0635-AL	70	6.35	53.44	52.38	4.75	6.35	20	45 / Right Hand	AGMA Q10	2024 Aluminium Anodized
		<i>0.250</i>	<i>2.104</i>	<i>2.062</i>	<i>0.187</i>	<i>0.250</i>				
# GHL48-70-0475B0635-303	70	6.350 / With Set Screw	53.44	52.38	4.75	6.35	20	45 / Left Hand	AGMA Q10	303 Stainless Steel
			<i>2.104</i>	<i>2.062</i>	<i>0.187</i>	<i>0.250</i>				
# GHR48-70-0475B0635-303	70	6.350 / With Set Screw	53.44	52.38	4.75	6.35	20	45 / Right Hand	AGMA Q10	303 Stainless Steel
			<i>2.104</i>	<i>2.062</i>	<i>0.187</i>	<i>0.250</i>				
# GHL48-80-0475B0635-303	80	6.350 / With Set Screw	60.91	59.86	4.75	6.35	20	45 / Left Hand	AGMA Q10	303 Stainless Steel
			<i>2.398</i>	<i>2.357</i>	<i>0.187</i>	<i>0.250</i>				
# GHR48-80-0475B0635-303	80	6.350 / With Set Screw	60.91	59.86	4.75	6.35	20	45 / Right Hand	AGMA Q10	303 Stainless Steel
			<i>2.398</i>	<i>2.357</i>	<i>0.187</i>	<i>0.250</i>				

Indicates item not stocked at time of printing - Please enquire for lead time

E&OE Pricing and all details subject to change without notice - Copyright Miniature Bearings Australia Pty Ltd

MBA Size Listings are a guide to sizes only and must not be solely relied on for critical design information.

Gears - Helical - 48 Normal Pitch

Part Number	Teeth No.	Bore mm	Outside Diameter mm	Pitch Diameter mm	Face Width mm	Hub Projection mm	Pressure Angle Deg.	Helix Angle / Direction Deg.	Quality Class	Material
		<i>inches</i>	<i>inches</i>	<i>inches</i>	<i>inches</i>	<i>inches</i>				
# GHL48-080-0476B0635-AL	80	6.35	60.91	59.86	4.76	6.35	20	45 / Left Hand	AGMA Q10	2024 Aluminium Anodized
		<i>0.250</i>	<i>2.398</i>	<i>2.357</i>	<i>0.187</i>	<i>0.250</i>				
# GHR48-080-0475B0635-AL	80	6.35	60.91	59.86	4.75	6.35	20	45 / Right Hand	AGMA Q10	2024 Aluminium Anodized
		<i>0.250</i>	<i>2.398</i>	<i>2.357</i>	<i>0.187</i>	<i>0.250</i>				
# GHL48-090-0476B0635-AL	90	6.35	68.40	67.35	4.76	6.35	20	45 / Left Hand	AGMA Q10	2024 Aluminium Anodized
		<i>0.250</i>	<i>2.693</i>	<i>2.652</i>	<i>0.187</i>	<i>0.250</i>				
# GHR48-090-0475B0635-AL	90	6.35	68.40	67.35	4.75	6.35	20	45 / Right Hand	AGMA Q10	2024 Aluminium Anodized
		<i>0.250</i>	<i>2.693</i>	<i>2.652</i>	<i>0.187</i>	<i>0.250</i>				
# GHR48-90-0475B0635-303	90	6.350 / With Set Screw	68.40	67.35	4.75	6.35	20	45 / Right Hand	AGMA Q10	303 Stainless Steel
			<i>2.693</i>	<i>2.652</i>	<i>0.187</i>	<i>0.250</i>				
# GHL48-90-0475B0635-303	90	6.350 / With Set Screw	68.40	67.35	4.75	6.35	20	45 / Left Hand	AGMA Q10	303 Stainless Steel
			<i>2.693</i>	<i>2.652</i>	<i>0.187</i>	<i>0.250</i>				
# GHL48-100-0475B0635-303	100	6.350 / With Set Screw	75.87	74.83	4.75	6.35	20	45 / Left Hand	AGMA Q10	303 Stainless Steel
			<i>2.987</i>	<i>2.946</i>	<i>0.187</i>	<i>0.250</i>				

Indicates item not stocked at time of printing - Please enquire for lead time

E&OE Pricing and all details subject to change without notice - Copyright Miniature Bearings Australia Pty Ltd

MBA Size Listings are a guide to sizes only and must not be solely relied on for critical design information.

Gears - Helical - 48 Normal Pitch

Part Number	Teeth No.	Bore mm	Outside Diameter mm	Pitch Diameter mm	Face Width mm	Hub Projection mm	Pressure Angle Deg.	Helix Angle / Direction Deg.	Quality Class	Material
		<i>inches</i>	<i>inches</i>	<i>inches</i>	<i>inches</i>	<i>inches</i>				
# GHL48-100-0476B0635-AL	100	6.35	75.87	74.83	4.76	6.35	20	45 / Left Hand	AGMA Q10	2024 Aluminium Anodized
		<i>0.250</i>	<i>2.987</i>	<i>2.946</i>	<i>0.187</i>	<i>0.250</i>				
# GHR48-100-0475B0635-303	100	6.350 / With Set Screw	75.87	74.83	4.75	6.35	20	45 / Right Hand	AGMA Q10	303 Stainless Steel
			<i>2.987</i>	<i>2.946</i>	<i>0.187</i>	<i>0.250</i>				
# GHR48-100-0475B0635-AL	100	6.35	75.87	74.83	4.75	6.35	20	45 / Right Hand	AGMA Q10	2024 Aluminium Anodized
		<i>0.250</i>	<i>2.987</i>	<i>2.946</i>	<i>0.187</i>	<i>0.250</i>				

Indicates item not stocked at time of printing - Please enquire for lead time

E&OE Pricing and all details subject to change without notice - Copyright Miniature Bearings Australia Pty Ltd

MBA Size Listings are a guide to sizes only and must not be solely relied on for critical design information.



DISTRIBUTED BY

Ask us to put your name and address here

<http://www.minibearings.com.au/product>

Ph +61 7 3245 7977

Fax +61 7 3245 1017

Catalogue requests to catalogues@minibearings.com.au

