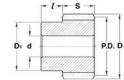




MBA

Gears - Helical - Module 1.5



Gears - Helical - Module 1.5

Part Number	Teeth No.	Bore mm	Outside Diameter mm	Pitch Diameter mm	Face Width mm	Hub Projection mm	Pressure Angle Deg.	Helix Angle / Direction Deg.	Quality Class	Material
		<i>inches</i>	<i>inches</i>	<i>inches</i>	<i>inches</i>	<i>inches</i>				
# GHR150-13-1500B1000-ST	13	10.000 <i>0.394</i>	30.60 <i>1.205</i>	27.60 <i>1.087</i>	15.00 <i>0.591</i>	10.00 <i>0.394</i>	20	45 / Right Hand	Commercial	Steel
# GHL150-13-1500B1000-ST	13	10.000 <i>0.394</i>	30.60 <i>1.205</i>	27.60 <i>1.087</i>	15.00 <i>0.591</i>	10.00 <i>0.394</i>	20	45 / Left Hand	Commercial	Steel
# GHR150-26-1500B1200-ST	26	12.000 <i>0.472</i>	58.20 <i>2.291</i>	55.20 <i>2.173</i>	15.00 <i>0.591</i>	10.00 <i>0.394</i>	20	45 / Right Hand	Commercial	Steel
# GHL150-26-1500B1200-ST	26	12.000 <i>0.472</i>	58.20 <i>2.291</i>	55.20 <i>2.173</i>	15.00 <i>0.591</i>	10.00 <i>0.394</i>	20	45 / Left Hand	Commercial	Steel

Indicates item not stocked at time of printing - Please enquire for lead time
 E&OE Pricing and all details subject to change without notice - Copyright Miniature Bearings Australia Pty Ltd
 MBA Size Listings are a guide to sizes only and must not be solely relied on for critical design information.



DISTRIBUTED BY

Ask us to put your name and address here

<http://www.minibearings.com.au/product>

Ph +61 7 3245 7977

Fax +61 7 3245 1017

Catalogue requests to catalogues@minibearings.com.au
