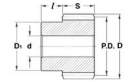




# MBA

## Gears - Helical - Module 1



### Gears - Helical - Module 1

Part Number	Teeth No.	Bore mm	Outside Diameter mm	Pitch Diameter mm	Face Width mm	Hub Projection mm	Pressure Angle Deg.	Helix Angle / Direction Deg.	Quality Class	Material
		<i>inches</i>	<i>inches</i>	<i>inches</i>	<i>inches</i>	<i>inches</i>				
# GHR100-13-1200B0800-ST	13	8.000 <i>0.315</i>	20.40 <i>0.803</i>	18.40 <i>0.724</i>	12.00 <i>0.472</i>	10.00 <i>0.394</i>	20	45 / Right Hand	Commercial	Steel
# GHL100-13-1200B0800-ST	13	8.000 <i>0.315</i>	20.40 <i>0.803</i>	18.40 <i>0.724</i>	12.00 <i>0.472</i>	10.00 <i>0.394</i>	20	45 / Left Hand	Commercial	Steel
# GHR100-26-1200B1000-ST	26	10.000 <i>0.394</i>	38.80 <i>1.528</i>	36.80 <i>1.449</i>	12.00 <i>0.472</i>	10.00 <i>0.394</i>	20	45 / Right Hand	Commercial	Steel
# GHL100-26-1200B1000-ST	26	10.000 <i>0.394</i>	38.80 <i>1.528</i>	36.80 <i>1.449</i>	12.00 <i>0.472</i>	10.00 <i>0.394</i>	20	45 / Left Hand	Commercial	Steel

# Indicates item not stocked at time of printing - Please enquire for lead time  
 E&OE Pricing and all details subject to change without notice - Copyright Miniature Bearings Australia Pty Ltd  
 MBA Size Listings are a guide to sizes only and must not be solely relied on for critical design information.



DISTRIBUTED BY

Ask us to put your name and address here

<http://www.minibearings.com.au/product>

Ph +61 7 3245 7977

Fax +61 7 3245 1017

Catalogue requests to [catalogues@minibearings.com.au](mailto:catalogues@minibearings.com.au)

