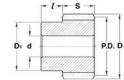




# MBA

## Gears - Helical - Module 2.5



### Gears - Helical - Module 2.5

Part Number	Teeth No.	Bore mm	Outside Diameter mm	Pitch Diameter mm	Face Width mm	Hub Projection mm	Pressure Angle Deg.	Helix Angle / Direction Deg.	Quality Class	Material
		<i>inches</i>	<i>inches</i>	<i>inches</i>	<i>inches</i>	<i>inches</i>				
# GHR250-13-2200B1400-ST	13	14.000 <i>0.551</i>	50.90 <i>2.004</i>	46.00 <i>1.811</i>	22.00 <i>0.866</i>	14.00 <i>0.551</i>	20	45 / Right Hand	Commercial	Steel
# GHL250-13-2200B1400-ST	13	14.000 <i>0.551</i>	50.90 <i>2.004</i>	46.00 <i>1.811</i>	22.00 <i>0.866</i>	14.00 <i>0.551</i>	20	45 / Left Hand	Commercial	Steel
# GHR250-26-2200B1800-ST	26	18.000 <i>0.709</i>	96.90 <i>3.815</i>	92.00 <i>3.622</i>	22.00 <i>0.866</i>	14.00 <i>0.551</i>	20	45 / Right Hand	Commercial	Steel
# GHL250-26-2200B1800-ST	26	18.000 <i>0.709</i>	96.90 <i>3.815</i>	92.00 <i>3.622</i>	22.00 <i>0.866</i>	14.00 <i>0.551</i>	20	45 / Left Hand	Commercial	Steel

# Indicates item not stocked at time of printing - Please enquire for lead time  
 E&OE Pricing and all details subject to change without notice - Copyright Miniature Bearings Australia Pty Ltd  
 MBA Size Listings are a guide to sizes only and must not be solely relied on for critical design information.



DISTRIBUTED BY

Ask us to put your name and address here

<http://www.minibearings.com.au/product>

Ph +61 7 3245 7977

Fax +61 7 3245 1017

Catalogue requests to [catalogues@minibearings.com.au](mailto:catalogues@minibearings.com.au)
