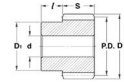




MBA

Gears - Helical - Module 3



Gears - Helical - Module 3

Part Number	Teeth No.	Bore mm	Outside Diameter mm	Pitch Diameter mm	Face Width mm	Hub Projection mm	Pressure Angle Deg.	Helix Angle / Direction Deg.	Quality Class	Material
		<i>inches</i>	<i>inches</i>	<i>inches</i>	<i>inches</i>	<i>inches</i>				
# GHR300-13-2500B1600-ST	13	16.000 <i>0.630</i>	61.20 <i>2.409</i>	55.20 <i>2.173</i>	25.00 <i>0.984</i>	15.00 <i>0.591</i>	20	45 / Right Hand	Commercial	Steel
# GHL300-13-2500B1600-ST	13	16.000 <i>0.630</i>	61.20 <i>2.409</i>	55.20 <i>2.173</i>	25.00 <i>0.984</i>	15.00 <i>0.591</i>	20	45 / Left Hand	Commercial	Steel
# GHR300-26-2500B2200-ST	26	22.000 <i>0.866</i>	116.30 <i>4.579</i>	110.30 <i>4.343</i>	25.00 <i>0.984</i>	15.00 <i>0.591</i>	20	45 / Right Hand	Commercial	Steel
# GHL300-26-2500B2200-ST	26	22.000 <i>0.866</i>	116.30 <i>4.579</i>	110.30 <i>4.343</i>	25.00 <i>0.984</i>	15.00 <i>0.591</i>	20	45 / Left Hand	Commercial	Steel

Indicates item not stocked at time of printing - Please enquire for lead time
 E&OE Pricing and all details subject to change without notice - Copyright Miniature Bearings Australia Pty Ltd
 MBA Size Listings are a guide to sizes only and must not be solely relied on for critical design information.



DISTRIBUTED BY

Ask us to put your name and address here

<http://www.minibearings.com.au/product>

Ph +61 7 3245 7977

Fax +61 7 3245 1017

Catalogue requests to catalogues@minibearings.com.au
