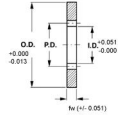




MBA

Gears - Internal - 96 Pitch



2024-T4 Aluminum and 303 stainless steel.

Gears - Internal - 96 Pitch

Part Number	Teeth (No.)	Outside Diameter (OD) mm	Face Width (fw) mm	Pitch Diameter (PD) mm	Inside Diameter (ID) mm	Pressure Angle Deg.	Material	Quality Class
		<i>inches</i>	<i>inches</i>	<i>inches</i>	<i>inches</i>			
# GI96-080-0318x50.75-303	80	50.749 <i>1.998</i>	3.175 <i>0.125</i>	21.158 <i>0.833</i>	20.65 <i>0.813</i>	20.00	303 Stainless Steel	AGMA Q10
# GI96-080-0318x50.75-2024	80	50.749 <i>1.998</i>	3.175 <i>0.125</i>	21.158 <i>0.833</i>	20.65 <i>0.813</i>	20.00	2024-T4 Aluminum	AGMA Q10
# GI96-100-0318x50.75-2024	100	50.749 <i>1.998</i>	3.175 <i>0.125</i>	26.467 <i>1.042</i>	25.933 <i>1.021</i>	20.00	2024-T4 Aluminum	AGMA Q10
# GI96-100-0318x50.75-303	100	50.749 <i>1.998</i>	3.175 <i>0.125</i>	26.467 <i>1.042</i>	25.933 <i>1.021</i>	20.00	303 Stainless Steel	AGMA Q10
# GI96-120-0318x50.75-2024	120	50.749 <i>1.998</i>	3.175 <i>0.125</i>	31.75 <i>1.250</i>	31.217 <i>1.229</i>	20.00	2024-T4 Aluminum	AGMA Q10

Indicates item not stocked at time of printing - Please enquire for lead time
 E&OE Pricing and all details subject to change without notice - Copyright Miniature Bearings Australia Pty Ltd
 MBA Size Listings are a guide to sizes only and must not be solely relied on for critical design information.

Gears - Internal - 96 Pitch

Part Number	Teeth (No.)	Outside Diameter (OD) mm	Face Width (fw) mm	Pitch Diameter (PD) mm	Inside Diameter (ID) mm	Pressure Angle Deg.	Material	Quality Class
		<i>inches</i>	<i>inches</i>	<i>inches</i>	<i>inches</i>			
# GI96-120-0318x50.75-303	120	50.749 <i>1.998</i>	3.175 <i>0.125</i>	31.75 <i>1.250</i>	31.217 <i>1.229</i>	20.00	303 Stainless Steel	AGMA Q10
# GI96-140-0318x50.75-303	140	50.749 <i>1.998</i>	3.175 <i>0.125</i>	37.033 <i>1.458</i>	36.525 <i>1.438</i>	20.00	303 Stainless Steel	AGMA Q10
# GI96-140-0318x50.75-2024	140	50.749 <i>1.998</i>	3.175 <i>0.125</i>	37.033 <i>1.458</i>	36.525 <i>1.438</i>	20.00	2024-T4 Aluminum	AGMA Q10
# GI96-150-0318x50.75-2024	150	50.749 <i>1.998</i>	3.175 <i>0.125</i>	39.7 <i>1.563</i>	39.167 <i>1.542</i>	20.00	2024-T4 Aluminum	AGMA Q10
# GI96-150-0318x50.75-303	150	50.749 <i>1.998</i>	3.175 <i>0.125</i>	39.7 <i>1.563</i>	39.167 <i>1.542</i>	20.00	303 Stainless Steel	AGMA Q10
# GI96-150-0318x76.15-2024	150	76.149 <i>2.998</i>	3.175 <i>0.125</i>	39.7 <i>1.563</i>	39.167 <i>1.542</i>	20.00	2024-T4 Aluminum	AGMA Q10
# GI96-150-0318x76.15-303	150	76.149 <i>2.998</i>	3.175 <i>0.125</i>	39.7 <i>1.563</i>	39.167 <i>1.542</i>	20.00	303 Stainless Steel	AGMA Q10
# GI96-160-0318x76.15-2024	160	76.149 <i>2.998</i>	3.175 <i>0.125</i>	42.342 <i>1.667</i>	41.808 <i>1.646</i>	20.00	2024-T4 Aluminum	AGMA Q10
# GI96-160-0318x76.15-303	160	76.149 <i>2.998</i>	3.175 <i>0.125</i>	42.342 <i>1.667</i>	41.808 <i>1.646</i>	20.00	303 Stainless Steel	AGMA Q10
# GI96-180-0318x76.15-2024	180	76.149 <i>2.998</i>	3.175 <i>0.125</i>	47.625 <i>1.875</i>	47.092 <i>1.854</i>	20.00	2024-T4 Aluminum	AGMA Q10

Indicates item not stocked at time of printing - Please enquire for lead time

E&OE Pricing and all details subject to change without notice - Copyright Miniature Bearings Australia Pty Ltd

MBA Size Listings are a guide to sizes only and must not be solely relied on for critical design information.

Gears - Internal - 96 Pitch

Part Number	Teeth (No.)	Outside Diameter (OD) mm	Face Width (fw) mm	Pitch Diameter (PD) mm	Inside Diameter (ID) mm	Pressure Angle Deg.	Material	Quality Class
		<i>inches</i>	<i>inches</i>	<i>inches</i>	<i>inches</i>			
# GI96-180-0318x76.15-303	180	76.149 <i>2.998</i>	3.175 <i>0.125</i>	47.625 <i>1.875</i>	47.092 <i>1.854</i>	20.00	303 Stainless Steel	AGMA Q10
# GI96-200-0318x76.15-303	200	76.149 <i>2.998</i>	3.175 <i>0.125</i>	52.908 <i>2.083</i>	52.4 <i>2.063</i>	20.00	303 Stainless Steel	AGMA Q10
# GI96-200-0318x76.15-2024	200	76.149 <i>2.998</i>	3.175 <i>0.125</i>	52.908 <i>2.083</i>	52.4 <i>2.063</i>	20.00	2024-T4 Aluminum	AGMA Q10
# GI96-240-0318x76.15-2024	240	76.149 <i>2.998</i>	3.175 <i>0.125</i>	63.5 <i>2.500</i>	62.967 <i>2.479</i>	20.00	2024-T4 Aluminum	AGMA Q10
# GI96-240-0318x76.15-303	240	76.149 <i>2.998</i>	3.175 <i>0.125</i>	63.5 <i>2.500</i>	62.967 <i>2.479</i>	20.00	303 Stainless Steel	AGMA Q10
# GI96-240-0318x101.55-2024	240	101.549 <i>3.998</i>	3.175 <i>0.125</i>	63.5 <i>2.500</i>	62.967 <i>2.479</i>	20.00	2024-T4 Aluminum	AGMA Q10
# GI96-240-0318x101.55-303	240	101.549 <i>3.998</i>	3.175 <i>0.125</i>	63.5 <i>2.500</i>	62.967 <i>2.479</i>	20.00	303 Stainless Steel	AGMA Q10
# GI96-250-0318x101.55-303	250	101.549 <i>3.998</i>	3.175 <i>0.125</i>	66.142 <i>2.604</i>	65.608 <i>2.583</i>	20.00	303 Stainless Steel	AGMA Q10
# GI96-250-0318x101.55-2024	250	101.549 <i>3.998</i>	3.175 <i>0.125</i>	66.142 <i>2.604</i>	65.608 <i>2.583</i>	20.00	2024-T4 Aluminum	AGMA Q10
# GI96-260-0318x101.55-2024	260	101.549 <i>3.998</i>	3.175 <i>0.125</i>	68.783 <i>2.708</i>	68.275 <i>2.688</i>	20.00	2024-T4 Aluminum	AGMA Q10

Indicates item not stocked at time of printing - Please enquire for lead time

E&OE Pricing and all details subject to change without notice - Copyright Miniature Bearings Australia Pty Ltd

MBA Size Listings are a guide to sizes only and must not be solely relied on for critical design information.

Gears - Internal - 96 Pitch

Part Number	Teeth (No.)	Outside Diameter (OD) mm	Face Width (fw) mm	Pitch Diameter (PD) mm	Inside Diameter (ID) mm	Pressure Angle Deg.	Material	Quality Class
		<i>inches</i>	<i>inches</i>	<i>inches</i>	<i>inches</i>			
# GI96-260-0318x101.55-303	260	101.549 <i>3.998</i>	3.175 <i>0.125</i>	68.783 <i>2.708</i>	68.275 <i>2.688</i>	20.00	303 Stainless Steel	AGMA Q10
# GI96-280-0318x101.55-2024	280	101.549 <i>3.998</i>	3.175 <i>0.125</i>	74.092 <i>2.917</i>	73.558 <i>2.896</i>	20.00	2024-T4 Aluminum	AGMA Q10
# GI96-280-0318x101.55-303	280	101.549 <i>3.998</i>	3.175 <i>0.125</i>	74.092 <i>2.917</i>	73.558 <i>2.896</i>	20.00	303 Stainless Steel	AGMA Q10
# GI96-288-0318x101.55-2024	288	101.549 <i>3.998</i>	3.175 <i>0.125</i>	76.2 <i>3.000</i>	75.667 <i>2.979</i>	20.00	2024-T4 Aluminum	AGMA Q10
# GI96-288-0318x101.55-303	288	101.549 <i>3.998</i>	3.175 <i>0.125</i>	76.2 <i>3.000</i>	75.667 <i>2.979</i>	20.00	303 Stainless Steel	AGMA Q10
# GI96-300-0318x101.55-303	300	101.549 <i>3.998</i>	3.175 <i>0.125</i>	79.375 <i>3.125</i>	78.842 <i>3.104</i>	20.00	303 Stainless Steel	AGMA Q10
# GI96-300-0318x101.55-2024	300	101.549 <i>3.998</i>	3.175 <i>0.125</i>	79.375 <i>3.125</i>	78.842 <i>3.104</i>	20.00	2024-T4 Aluminum	AGMA Q10

Indicates item not stocked at time of printing - Please enquire for lead time

E&OE Pricing and all details subject to change without notice - Copyright Miniature Bearings Australia Pty Ltd

MBA Size Listings are a guide to sizes only and must not be solely relied on for critical design information.



DISTRIBUTED BY

Ask us to put your name and address here

<http://www.minibearings.com.au/product>

Ph +61 7 3245 7977

Fax +61 7 3245 1017

Catalogue requests to catalogues@minibearings.com.au
