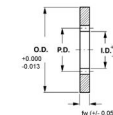




MBA

Gears - Internal - Module 0.8



2024-T4 Aluminum and 303 stainless steel.

Gears - Internal - Module 0.8

Part Number	Teeth (No.)	Outside Diameter (OD) mm	Face Width (fw) mm	Pitch Diameter (PD) mm	Inside Diameter (ID) mm	Pressure Angle Deg.	Material	Quality Class
		<i>inches</i>	<i>inches</i>	<i>inches</i>	<i>inches</i>			
GI080-060-0800x100-303	60	100.000 <i>3.937</i>	8.000 <i>0.315</i>	48 <i>1.890</i>	46.4 <i>1.827</i>	20.00	303 Stainless Steel	ISO Class 7
# GI080-072-0800x100-303	72	100.000 <i>3.937</i>	8.000 <i>0.315</i>	57.6 <i>2.268</i>	56 <i>2.205</i>	20.00	303 Stainless Steel	ISO Class 7
# GI080-080-0800x100-303	80	100.000 <i>3.937</i>	8.000 <i>0.315</i>	64 <i>2.520</i>	62.4 <i>2.457</i>	20.00	303 Stainless Steel	ISO Class 7
# GI080-084-0800x100-303	84	100.000 <i>3.937</i>	8.000 <i>0.315</i>	67.2 <i>2.646</i>	65.6 <i>2.583</i>	20.00	303 Stainless Steel	ISO Class 7
# GI080-090-0800x100-303	90	100.000 <i>3.937</i>	8.000 <i>0.315</i>	72 <i>2.835</i>	70.4 <i>2.772</i>	20.00	303 Stainless Steel	ISO Class 7

Indicates item not stocked at time of printing - Please enquire for lead time
 E&OE Pricing and all details subject to change without notice - Copyright Miniature Bearings Australia Pty Ltd
 MBA Size Listings are a guide to sizes only and must not be solely relied on for critical design information.

Gears - Internal - Module 0.8

Part Number	Teeth (No.)	Outside Diameter (OD) mm	Face Width (fw) mm	Pitch Diameter (PD) mm	Inside Diameter (ID) mm	Pressure Angle Deg.	Material	Quality Class
		<i>inches</i>	<i>inches</i>	<i>inches</i>	<i>inches</i>			
# GI080-096-0800x100-303	96	100.000 <i>3.937</i>	8.000 <i>0.315</i>	76.8 <i>3.024</i>	75.2 <i>2.961</i>	20.00	303 Stainless Steel	ISO Class 7
# GI080-100-0800x120-303	100	120.000 <i>4.724</i>	8.000 <i>0.315</i>	80 <i>3.150</i>	78.4 <i>3.087</i>	20.00	303 Stainless Steel	ISO Class 7
# GI080-108-0800x120-303	108	120.000 <i>4.724</i>	8.000 <i>0.315</i>	86.4 <i>3.402</i>	84.8 <i>3.339</i>	20.00	303 Stainless Steel	ISO Class 7
# GI080-120-0800x120-303	120	120.000 <i>4.724</i>	8.000 <i>0.315</i>	96 <i>3.780</i>	94.4 <i>3.717</i>	20.00	303 Stainless Steel	ISO Class 7

Indicates item not stocked at time of printing - Please enquire for lead time

E&OE Pricing and all details subject to change without notice - Copyright Miniature Bearings Australia Pty Ltd

MBA Size Listings are a guide to sizes only and must not be solely relied on for critical design information.



DISTRIBUTED BY

Ask us to put your name and address here

<http://www.minibearings.com.au/product>

Ph +61 7 3245 7977

Fax +61 7 3245 1017

Catalogue requests to catalogues@minibearings.com.au

