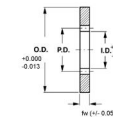




# MBA

## Gears - Internal - Module 1



2024-T4 Aluminum and 303 stainless steel.

### Gears - Internal - Module 1

Part Number	Teeth (No.)	Outside Diameter (OD) mm	Face Width (fw) mm	Pitch Diameter (PD) mm	Inside Diameter (ID) mm	Pressure Angle Deg.	Material	Quality Class
		<i>inches</i>	<i>inches</i>	<i>inches</i>	<i>inches</i>			
# GI100-060-1000x90-CS	60	90.000 <i>3.543</i>	10.000 <i>0.394</i>	60 <i>2.362</i>	58 <i>2.283</i>	20.00	Carbon Steel	Commercial
GI100-060-1000x100-303	60	100.000 <i>3.937</i>	10.000 <i>0.394</i>	60 <i>2.362</i>	58 <i>2.283</i>	20.00	303 Stainless Steel	ISO Class 7
# GI100-072-1000x100-303	72	100.000 <i>3.937</i>	10.000 <i>0.394</i>	72 <i>2.835</i>	70 <i>2.756</i>	20.00	303 Stainless Steel	ISO Class 7
# GI100-072-1000x100-CS	72	100.000 <i>3.937</i>	10.000 <i>0.394</i>	72 <i>2.835</i>	70 <i>2.756</i>	20.00	Carbon Steel	Commercial
# GI100-080-1000x100-303	80	100.000 <i>3.937</i>	10.000 <i>0.394</i>	80 <i>3.150</i>	78 <i>3.071</i>	20.00	303 Stainless Steel	ISO Class 7

# Indicates item not stocked at time of printing - Please enquire for lead time  
 E&OE Pricing and all details subject to change without notice - Copyright Miniature Bearings Australia Pty Ltd  
 MBA Size Listings are a guide to sizes only and must not be solely relied on for critical design information.

## Gears - Internal - Module 1

Part Number	Teeth (No.)	Outside Diameter (OD) mm	Face Width (fw) mm	Pitch Diameter (PD) mm	Inside Diameter (ID) mm	Pressure Angle Deg.	Material	Quality Class
		<i>inches</i>	<i>inches</i>	<i>inches</i>	<i>inches</i>			
# GI100-080-1000x110-CS	80	110.000 <i>4.331</i>	10.000 <i>0.394</i>	80 <i>3.150</i>	78 <i>3.071</i>	20.00	Carbon Steel	Commercial
# GI100-084-1000x115-CS	84	115.000 <i>4.528</i>	10.000 <i>0.394</i>	84 <i>3.307</i>	82 <i>3.228</i>	20.00	Carbon Steel	Commercial
# GI100-084-1000x120-303	84	120.000 <i>4.724</i>	10.000 <i>0.394</i>	84 <i>3.307</i>	82 <i>3.228</i>	20.00	303 Stainless Steel	ISO Class 7
# GI100-090-1000x120-CS	90	120.000 <i>4.724</i>	10.000 <i>0.394</i>	90 <i>3.543</i>	88 <i>3.465</i>	20.00	Carbon Steel	Commercial
# GI100-090-1000x120-303	90	120.000 <i>4.724</i>	10.000 <i>0.394</i>	90 <i>3.543</i>	88 <i>3.465</i>	20.00	303 Stainless Steel	ISO Class 7
# GI100-096-1000x120-303	96	120.000 <i>4.724</i>	10.000 <i>0.394</i>	96 <i>3.780</i>	94 <i>3.701</i>	20.00	303 Stainless Steel	ISO Class 7
# GI100-096-1000x125-CS	96	125.000 <i>4.921</i>	10.000 <i>0.394</i>	96 <i>3.780</i>	94 <i>3.701</i>	20.00	Carbon Steel	Commercial
# GI100-100-1000x130-CS	100	130.000 <i>5.118</i>	10.000 <i>0.394</i>	100 <i>3.937</i>	98 <i>3.858</i>	20.00	Carbon Steel	Commercial
# GI100-100-1000x150-303	100	150.000 <i>5.906</i>	10.000 <i>0.394</i>	100 <i>3.937</i>	98 <i>3.858</i>	20.00	303 Stainless Steel	ISO Class 7
# GI100-108-1000x140-CS	108	140.000 <i>5.512</i>	10.000 <i>0.394</i>	108 <i>4.252</i>	106 <i>4.173</i>	20.00	Carbon Steel	Commercial

# Indicates item not stocked at time of printing - Please enquire for lead time

E&OE Pricing and all details subject to change without notice - Copyright Miniature Bearings Australia Pty Ltd

MBA Size Listings are a guide to sizes only and must not be solely relied on for critical design information.

## Gears - Internal - Module 1

Part Number	Teeth (No.)	Outside Diameter (OD) mm	Face Width (fw) mm	Pitch Diameter (PD) mm	Inside Diameter (ID) mm	Pressure Angle Deg.	Material	Quality Class
		<i>inches</i>	<i>inches</i>	<i>inches</i>	<i>inches</i>			
# G1100-108-1000x150-303	108	150.000 <i>5.906</i>	10.000 <i>0.394</i>	108 <i>4.252</i>	106 <i>4.173</i>	20.00	303 Stainless Steel	ISO Class 7
# G1100-120-1000x150-CS	120	150.000 <i>5.906</i>	10.000 <i>0.394</i>	120 <i>4.724</i>	118 <i>4.646</i>	20.00	Carbon Steel	Commercial
# G1100-120-1000x150-303	120	150.000 <i>5.906</i>	10.000 <i>0.394</i>	120 <i>4.724</i>	118 <i>4.646</i>	20.00	303 Stainless Steel	ISO Class 7

# Indicates item not stocked at time of printing - Please enquire for lead time

E&OE Pricing and all details subject to change without notice - Copyright Miniature Bearings Australia Pty Ltd

MBA Size Listings are a guide to sizes only and must not be solely relied on for critical design information.



DISTRIBUTED BY

Ask us to put your name and address here

<http://www.minibearings.com.au/product>

Ph +61 7 3245 7977

Fax +61 7 3245 1017

Catalogue requests to [catalogues@minibearings.com.au](mailto:catalogues@minibearings.com.au)
