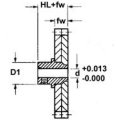




MBA

Gears - Spur - Antibacklash - Module 1



Steel - Stainless Steel - Aluminium - 20 Degree Pressure Angle.

Gears - Spur - Antibacklash - Module 1

Part Number	Teeth (No.)	Pitch Circle Diameter (PD) mm <i>inches</i>	Bore (d) mm <i>inches</i>	Outside Diameter (OD) mm <i>inches</i>	Face Width (fw) mm <i>inches</i>	Overall Width mm <i>inches</i>	Hub Diameter (D1) mm <i>inches</i>	Hub Proj / Locking Method mm <i>inches</i>	Spring Type	Material / Quality
# GSA100-50-1000B1000-S4-HS	50	50.00 <i>1.969</i>	10.000 <i>0.394</i>		10.000 <i>0.394</i>	20.00 <i>0.787</i>	20.00 <i>0.787</i>	10.000 / Pin Hub - Set Screw	Torsion	AISI 4135 Steel - Hardened Teeth / ISO Class 5
# GSA100-50-1000B1000-A56-HS	50	50.00 <i>1.969</i>	10.000 <i>0.394</i>		10.000 <i>0.394</i>	20.00 <i>0.787</i>	20.00 <i>0.787</i>	10.000 / Pin Hub - Set Screw	Torsion	5056 Aluminium / ISO Class 8

Indicates item not stocked at time of printing - Please enquire for lead time

E&OE Pricing and all details subject to change without notice - Copyright Miniature Bearings Australia Pty Ltd

MBA Size Listings are a guide to sizes only and must not be solely relied on for critical design information.

Gears - Spur - Antibacklash - Module 1

Part Number	Teeth (No.)	Pitch Circle Diameter (PD) mm <i>inches</i>	Bore (d) mm <i>inches</i>	Outside Diameter (OD) mm <i>inches</i>	Face Width (fw) mm <i>inches</i>	Overall Width mm <i>inches</i>	Hub Diameter (D1) mm <i>inches</i>	Hub Proj / Locking Method mm <i>inches</i>	Spring Type	Material / Quality
# GSA100-60-1000B1000-S4-HS	60	60.00 <i>2.362</i>	10.000 <i>0.394</i>		10.000 <i>0.394</i>	20.00 <i>0.787</i>	20.00 <i>0.787</i>	10.000 / Pin Hub - Set Screw	Torsion	AISI 4135 Steel - Hardened Teeth / ISO Class 5
# GSA100-60-1000B1000-A56-HS	60	60.00 <i>2.362</i>	10.000 <i>0.394</i>		10.000 <i>0.394</i>	20.00 <i>0.787</i>	20.00 <i>0.787</i>	10.000 / Pin Hub - Set Screw	Torsion	5056 Aluminium / ISO Class 8
# GSA100-70-1000B1200-S4-HS	70	70.00 <i>2.756</i>	12.000 <i>0.472</i>		10.000 <i>0.394</i>	20.00 <i>0.787</i>	24.00 <i>0.945</i>	10.000 / Pin Hub - Set Screw	Helical	AISI 4135 Steel - Hardened Teeth / ISO Class 5
# GSA100-70-1000B1200-1045-HS	70	70.00 <i>2.756</i>	12.000 <i>0.472</i>		10.000 <i>0.394</i>	20.00 <i>0.787</i>	24.00 <i>0.945</i>	10.000 / Pin Hub - Set Screw	Helical	AISI 1045 Steel - Tufftrided / ISO Class 8
# GSA100-80-1000B1200-S4-HS	80	80.00 <i>3.150</i>	12.000 <i>0.472</i>		10.000 <i>0.394</i>	20.00 <i>0.787</i>	24.00 <i>0.945</i>	10.000 / Pin Hub - Set Screw	Helical	AISI 4135 Steel - Hardened Teeth / ISO Class 5
# GSA100-80-1000B1200-1045-HS	80	80.00 <i>3.150</i>	12.000 <i>0.472</i>		10.000 <i>0.394</i>	20.00 <i>0.787</i>	24.00 <i>0.945</i>	10.000 / Pin Hub - Set Screw	Helical	AISI 1045 Steel - Tufftrided / ISO Class 8

Indicates item not stocked at time of printing - Please enquire for lead time

E&OE Pricing and all details subject to change without notice - Copyright Miniature Bearings Australia Pty Ltd

MBA Size Listings are a guide to sizes only and must not be solely relied on for critical design information.

Gears - Spur - Antibacklash - Module 1

Part Number	Teeth (No.)	Pitch Circle Diameter (PD) mm	Bore (d) mm	Outside Diameter (OD) mm	Face Width (fw) mm	Overall Width mm	Hub Diameter (D1) mm	Hub Proj / Locking Method mm	Spring Type	Material / Quality
		<i>inches</i>	<i>inches</i>	<i>inches</i>	<i>inches</i>	<i>inches</i>	<i>inches</i>	<i>inches</i>		
# GSA100-90-1000B1200-S4-HS	90	90.00	12.000		10.000	20.00	24.00	10.000 / Pin Hub - Set Screw	Helical	AISI 4135 Steel - Hardened Teeth / ISO Class 5
		<i>3.543</i>	<i>0.472</i>		<i>0.394</i>	<i>0.787</i>	<i>0.945</i>			
# GSA100-90-1000B1200-1045-HS	90	90.00	12.000		10.000	20.00	24.00	10.000 / Pin Hub - Set Screw	Helical	AISI 1045 Steel - Tufftrided / ISO Class 8
		<i>3.543</i>	<i>0.472</i>		<i>0.394</i>	<i>0.787</i>	<i>0.945</i>			
# GSA100-100-1000B1200-S4-HS	100	100.00	12.000		10.000	20.00	30.00	10.000 / Pin Hub - Set Screw	Helical	AISI 4135 Steel - Hardened Teeth / ISO Class 5
		<i>3.937</i>	<i>0.472</i>		<i>0.394</i>	<i>0.787</i>	<i>1.181</i>			
# GSA100-100-1000B1200-1045-HS	100	100.00	12.000		10.000	20.00	30.00	10.000 / Pin Hub - Set Screw	Helical	AISI 1045 Steel - Tufftrided / ISO Class 8
		<i>3.937</i>	<i>0.472</i>		<i>0.394</i>	<i>0.787</i>	<i>1.181</i>			
# GSA100-120-1000B1200-S4-HS	120	120.00	12.000		10.000	20.00	30.00	10.000 / Pin Hub - Set Screw	Helical	AISI 4135 Steel - Hardened Teeth / ISO Class 5
		<i>4.724</i>	<i>0.472</i>		<i>0.394</i>	<i>0.787</i>	<i>1.181</i>			

Indicates item not stocked at time of printing - Please enquire for lead time

E&OE Pricing and all details subject to change without notice - Copyright Miniature Bearings Australia Pty Ltd

MBA Size Listings are a guide to sizes only and must not be solely relied on for critical design information.

Gears - Spur - Antibacklash - Module 1

Part Number	Teeth (No.)	Pitch Circle Diameter (PD) mm	Bore (d) mm	Outside Diameter (OD) mm	Face Width (fw) mm	Overall Width mm	Hub Diameter (D1) mm	Hub Proj / Locking Method mm	Spring Type	Material / Quality
		<i>inches</i>	<i>inches</i>	<i>inches</i>	<i>inches</i>	<i>inches</i>	<i>inches</i>	<i>inches</i>		
# GSA100-120-1000B1200-1045-HS	120	120.00	12.000		10.000	20.00	30.00	10.000 / Pin Hub - Set Screw	Helical	AISI 1045 Steel - Tufftrided / ISO Class 8
		<i>4.724</i>	<i>0.472</i>		<i>0.394</i>	<i>0.787</i>	<i>1.181</i>			

Indicates item not stocked at time of printing - Please enquire for lead time

E&OE Pricing and all details subject to change without notice - Copyright Miniature Bearings Australia Pty Ltd

MBA Size Listings are a guide to sizes only and must not be solely relied on for critical design information.



DISTRIBUTED BY

Ask us to put your name and address here

<http://www.minibearings.com.au/product>

Ph +61 7 3245 7977

Fax +61 7 3245 1017

Catalogue requests to catalogues@minibearings.com.au

