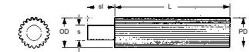




MBA

Gears - Spur - Stock - Module 0.8



Lengths of spur gear stock for manufacturing gears.

Gears - Spur - Stock - Module 0.8

Part Number	Teeth (No.)	Pitch Diameter (PD) mm	Usable Length (L) mm	Outside Diameter (OD) mm	Shank Diameter (s) mm	Shank Length (sl) mm	Material	Pressure Angle Deg.
		<i>inches</i>	<i>inches</i>	<i>inches</i>	<i>inches</i>	<i>inches</i>		
# GST080-012-080-ST	12	9.6 <i>0.378</i>	80 <i>3.150</i>	11.2 <i>0.441</i>	6.00 <i>0.236</i>	19.00 <i>0.748</i>	Carbon Steel	20 Deg.
# GST080-014-080-ST	14	11.2 <i>0.441</i>	80 <i>3.150</i>	12.8 <i>0.504</i>	6.00 <i>0.236</i>	19.00 <i>0.748</i>	Carbon Steel	20 Deg.
# GST080-016-080-ST	16	12.8 <i>0.504</i>	80 <i>3.150</i>	14.4 <i>0.567</i>	6.00 <i>0.236</i>	19.00 <i>0.748</i>	Carbon Steel	20 Deg.
# GST080-018-080-ST	18	14.4 <i>0.567</i>	80 <i>3.150</i>	16.0 <i>0.630</i>	6.00 <i>0.236</i>	19.00 <i>0.748</i>	Carbon Steel	20 Deg.
# GST080-024-080-ST	24	19.2 <i>0.756</i>	80 <i>3.150</i>	20.8 <i>0.819</i>	6.00 <i>0.236</i>	19.00 <i>0.748</i>	Carbon Steel	20 Deg.

Indicates item not stocked at time of printing - Please enquire for lead time

E&OE Pricing and all details subject to change without notice - Copyright Miniature Bearings Australia Pty Ltd

MBA Size Listings are a guide to sizes only and must not be solely relied on for critical design information.

Gears - Spur - Stock - Module 0.8

Part Number	Teeth (No.)	Pitch Diameter (PD) mm	Usable Length (L) mm	Outside Diameter (OD) mm	Shank Diameter (s) mm	Shank Length (sl) mm	Material	Pressure Angle Deg.
		<i>inches</i>	<i>inches</i>	<i>inches</i>	<i>inches</i>	<i>inches</i>		
# GST080-030-080-ST	30	24.0 <i>0.945</i>	80 <i>3.150</i>	25.6 <i>1.008</i>	12.00 <i>0.472</i>	19.00 <i>0.748</i>	Carbon Steel	20 Deg.
# GST080-032-150-ST	32	25.6 <i>1.008</i>	150 <i>5.906</i>	27.2 <i>1.071</i>	12.00 <i>0.472</i>	19.00 <i>0.748</i>	Carbon Steel	20 Deg.
# GST080-035-150-ST	35	28.0 <i>1.102</i>	150 <i>5.906</i>	29.6 <i>1.165</i>	12.00 <i>0.472</i>	19.00 <i>0.748</i>	Carbon Steel	20 Deg.
# GST080-036-150-ST	36	28.8 <i>1.134</i>	150 <i>5.906</i>	30.4 <i>1.197</i>	12.00 <i>0.472</i>	19.00 <i>0.748</i>	Carbon Steel	20 Deg.
# GST080-040-150-ST	40	32.0 <i>1.260</i>	150 <i>5.906</i>	33.6 <i>1.323</i>	12.00 <i>0.472</i>	19.00 <i>0.748</i>	Carbon Steel	20 Deg.
# GST080-045-150-ST	45	36.0 <i>1.417</i>	150 <i>5.906</i>	37.6 <i>1.480</i>	12.00 <i>0.472</i>	19.00 <i>0.748</i>	Carbon Steel	20 Deg.
# GST080-050-150-ST	50	40.0 <i>1.575</i>	150 <i>5.906</i>	41.6 <i>1.638</i>	12.00 <i>0.472</i>	19.00 <i>0.748</i>	Carbon Steel	20 Deg.
# GST080-055-200-ST	55	44.0 <i>1.732</i>	200 <i>7.874</i>	45.6 <i>1.795</i>	12.00 <i>0.472</i>	19.00 <i>0.748</i>	Carbon Steel	20 Deg.
# GST080-060-200-ST	60	48.0 <i>1.890</i>	200 <i>7.874</i>	49.6 <i>1.953</i>	12.00 <i>0.472</i>	19.00 <i>0.748</i>	Carbon Steel	20 Deg.
# GST080-064-200-ST	64	51.2 <i>2.016</i>	200 <i>7.874</i>	52.8 <i>2.079</i>	12.00 <i>0.472</i>	19.00 <i>0.748</i>	Carbon Steel	20 Deg.

Indicates item not stocked at time of printing - Please enquire for lead time

E&OE Pricing and all details subject to change without notice - Copyright Miniature Bearings Australia Pty Ltd

MBA Size Listings are a guide to sizes only and must not be solely relied on for critical design information.

Gears - Spur - Stock - Module 0.8

Part Number	Teeth (No.)	Pitch Diameter (PD) mm	Usable Length (L) mm	Outside Diameter (OD) mm	Shank Diameter (s) mm	Shank Length (sl) mm	Material	Pressure Angle Deg.
		<i>inches</i>	<i>inches</i>	<i>inches</i>	<i>inches</i>	<i>inches</i>		
# GST080-065-200-ST	65	52.0 <i>2.047</i>	200 <i>7.874</i>	53.6 <i>2.110</i>	12.00 <i>0.472</i>	19.00 <i>0.748</i>	Carbon Steel	20 Deg.
# GST080-070-200-ST	70	56.0 <i>2.205</i>	200 <i>7.874</i>	57.6 <i>2.268</i>	16.00 <i>0.630</i>	19.00 <i>0.748</i>	Carbon Steel	20 Deg.
# GST080-075-200-ST	75	60.0 <i>2.362</i>	200 <i>7.874</i>	61.6 <i>2.425</i>	16.00 <i>0.630</i>	19.00 <i>0.748</i>	Carbon Steel	20 Deg.
# GST080-080-200-ST	80	64.0 <i>2.520</i>	200 <i>7.874</i>	65.6 <i>2.583</i>	16.00 <i>0.630</i>	19.00 <i>0.748</i>	Carbon Steel	20 Deg.
# GST080-090-200-ST	90	72.0 <i>2.835</i>	200 <i>7.874</i>	73.6 <i>2.898</i>	16.00 <i>0.630</i>	19.00 <i>0.748</i>	Carbon Steel	20 Deg.

Indicates item not stocked at time of printing - Please enquire for lead time

E&OE Pricing and all details subject to change without notice - Copyright Miniature Bearings Australia Pty Ltd

MBA Size Listings are a guide to sizes only and must not be solely relied on for critical design information.



DISTRIBUTED BY

Ask us to put your name and address here

<http://www.minibearings.com.au/product>

Ph +61 7 3245 7977

Fax +61 7 3245 1017

Catalogue requests to catalogues@minibearings.com.au

