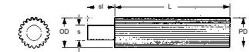




# MBA

## Gears - Spur - Stock - Module 1



Lengths of spur gear stock for manufacturing gears.

### Gears - Spur - Stock - Module 1

Part Number	Teeth (No.)	Pitch Diameter (PD) mm	Usable Length (L) mm	Outside Diameter (OD) mm	Shank Diameter (s) mm	Shank Length (sl) mm	Material	Pressure Angle Deg.
		<i>inches</i>	<i>inches</i>	<i>inches</i>	<i>inches</i>	<i>inches</i>		
# GST100-014-080-ST	14	14.0 <i>0.551</i>	80 <i>3.150</i>	16.0 <i>0.630</i>	6.00 <i>0.236</i>	19.00 <i>0.748</i>	Carbon Steel	20 Deg.
GST100-016-080-ST	16	16.0 <i>0.630</i>	80 <i>3.150</i>	18.0 <i>0.709</i>	6.00 <i>0.236</i>	19.00 <i>0.748</i>	Carbon Steel	20 Deg.
# GST100-020-080-ST	20	20.0 <i>0.787</i>	80 <i>3.150</i>	22.0 <i>0.866</i>	6.00 <i>0.236</i>	19.00 <i>0.748</i>	Carbon Steel	20 Deg.
# GST100-024-080-ST	24	24.0 <i>0.945</i>	80 <i>3.150</i>	26.0 <i>1.024</i>	12.00 <i>0.472</i>	19.00 <i>0.748</i>	Carbon Steel	20 Deg.
GST100-028-150-ST	28	28.0 <i>1.102</i>	150 <i>5.906</i>	30.0 <i>1.181</i>	12.00 <i>0.472</i>	19.00 <i>0.748</i>	Carbon Steel	20 Deg.

# Indicates item not stocked at time of printing - Please enquire for lead time

E&OE Pricing and all details subject to change without notice - Copyright Miniature Bearings Australia Pty Ltd

MBA Size Listings are a guide to sizes only and must not be solely relied on for critical design information.

## Gears - Spur - Stock - Module 1

Part Number	Teeth (No.)	Pitch Diameter (PD) mm	Usable Length (L) mm	Outside Diameter (OD) mm	Shank Diameter (s) mm	Shank Length (sl) mm	Material	Pressure Angle Deg.
		<i>inches</i>	<i>inches</i>	<i>inches</i>	<i>inches</i>	<i>inches</i>		
GST100-030-150-ST	30	30.0 <i>1.181</i>	150 <i>5.906</i>	32.0 <i>1.260</i>	12.00 <i>0.472</i>	19.00 <i>0.748</i>	Carbon Steel	20 Deg.
# GST100-032-150-ST	32	32.0 <i>1.260</i>	150 <i>5.906</i>	34.0 <i>1.339</i>	12.00 <i>0.472</i>	19.00 <i>0.748</i>	Carbon Steel	20 Deg.
# GST100-035-150-ST	35	35.0 <i>1.378</i>	150 <i>5.906</i>	37.0 <i>1.457</i>	12.00 <i>0.472</i>	19.00 <i>0.748</i>	Carbon Steel	20 Deg.
# GST100-036-150-ST	36	36.0 <i>1.417</i>	150 <i>5.906</i>	38.0 <i>1.496</i>	12.00 <i>0.472</i>	19.00 <i>0.748</i>	Carbon Steel	20 Deg.
# GST100-040-200-ST	40	40.0 <i>1.575</i>	200 <i>7.874</i>	42.0 <i>1.654</i>	12.00 <i>0.472</i>	19.00 <i>0.748</i>	Carbon Steel	20 Deg.
GST100-045-200-ST	45	45.0 <i>1.772</i>	200 <i>7.874</i>	47.0 <i>1.850</i>	12.00 <i>0.472</i>	19.00 <i>0.748</i>	Carbon Steel	20 Deg.
# GST100-048-200-ST	48	48.0 <i>1.890</i>	200 <i>7.874</i>	50.0 <i>1.969</i>	12.00 <i>0.472</i>	19.00 <i>0.748</i>	Carbon Steel	20 Deg.
# GST100-050-200-ST	50	50.0 <i>1.969</i>	200 <i>7.874</i>	52.0 <i>2.047</i>	12.00 <i>0.472</i>	19.00 <i>0.748</i>	Carbon Steel	20 Deg.
# GST100-052-200-ST	52	52.0 <i>2.047</i>	200 <i>7.874</i>	54.0 <i>2.126</i>	16.00 <i>0.630</i>	19.00 <i>0.748</i>	Carbon Steel	20 Deg.
# GST100-056-200-ST	56	56.0 <i>2.205</i>	200 <i>7.874</i>	58.0 <i>2.283</i>	16.00 <i>0.630</i>	19.00 <i>0.748</i>	Carbon Steel	20 Deg.

# Indicates item not stocked at time of printing - Please enquire for lead time

E&OE Pricing and all details subject to change without notice - Copyright Miniature Bearings Australia Pty Ltd

MBA Size Listings are a guide to sizes only and must not be solely relied on for critical design information.

## Gears - Spur - Stock - Module 1

Part Number	Teeth (No.)	Pitch Diameter (PD) mm	Usable Length (L) mm	Outside Diameter (OD) mm	Shank Diameter (s) mm	Shank Length (sl) mm	Material	Pressure Angle Deg.
		<i>inches</i>	<i>inches</i>	<i>inches</i>	<i>inches</i>	<i>inches</i>		
# GST100-060-200-ST	60	60.0 <i>2.362</i>	200 <i>7.874</i>	62.0 <i>2.441</i>	16.00 <i>0.630</i>	19.00 <i>0.748</i>	Carbon Steel	20 Deg.
# GST100-064-200-ST	64	64.0 <i>2.520</i>	200 <i>7.874</i>	66.0 <i>2.598</i>	16.00 <i>0.630</i>	19.00 <i>0.748</i>	Carbon Steel	20 Deg.
# GST100-072-200-ST	72	72.0 <i>2.835</i>	200 <i>7.874</i>	74.0 <i>2.913</i>	16.00 <i>0.630</i>	19.00 <i>0.748</i>	Carbon Steel	20 Deg.

# Indicates item not stocked at time of printing - Please enquire for lead time

E&OE Pricing and all details subject to change without notice - Copyright Miniature Bearings Australia Pty Ltd

MBA Size Listings are a guide to sizes only and must not be solely relied on for critical design information.



DISTRIBUTED BY

Ask us to put your name and address here

<http://www.minibearings.com.au/product>

Ph +61 7 3245 7977

Fax +61 7 3245 1017

Catalogue requests to [catalogues@minibearings.com.au](mailto:catalogues@minibearings.com.au)

