



MBA

Hobby Gears - Worm and Wheel 30 : 1 Plastic

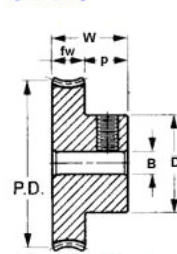
A small selection of popular sizes.

See main listings for sizes not shown here.

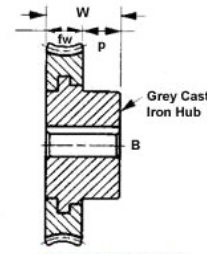
Select the gear and the worm to complete the set.

1 start 30 tooth gear.

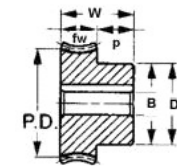
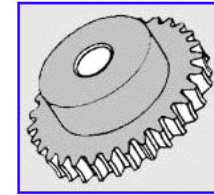
GEARS



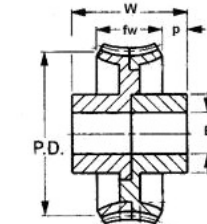
Gear with hub & set screw
TYPE G1



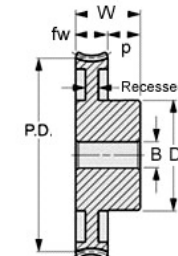
Gear with cast iron hub
Type G2



Gear with hub - No setscrew
Type G3

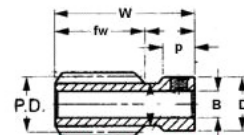


Two piece gear
Type G4

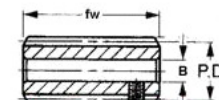


Gear with recessed centre
Type G5 (no setscrew)

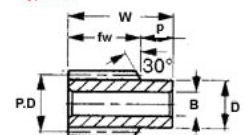
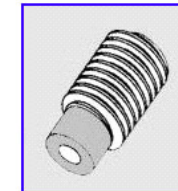
WORMS



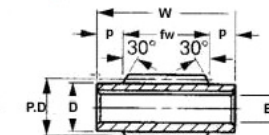
Worm with hub and set screw
Type W1



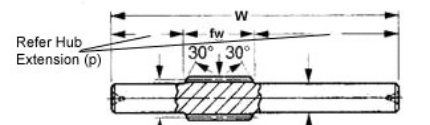
Worm with no hub
Type W4 (locking - refer tables)



Worm with hub - no set screw
Type W2



Worm with double hub
Type W3 (no set screw)



Worm with integral shaft
Type W5

Shaft Diameter
Listed instead of Bore

Indicates item not stocked at time of printing - Please enquire for lead time

E&OE Pricing and all details subject to change without notice - Copyright Miniature Bearings Australia Pty Ltd

MBA Size Listings are a guide to sizes only and must not be solely relied on for critical design information.

Hobby Gears - Worm and Wheel 30 : 1 Plastic

Part Number	Gear or Worm	Teeth / PCD (No. / mm)	Direction	Starts	Bore (B) mm	Overall Width or Length (w) mm	Face Width (fw) mm	Hub Diameter / Locking Method mm	Quality / Material	Hub Projection (p) mm
					<i>inches</i>	<i>inches</i>	<i>inches</i>	<i>inches</i>		<i>inches</i>
WG1R32-1-030-05HBS0635-ACE	Gear with Hub	30 / 23.83	Right Hand	Single / Type G1	6.350	11.113	4.762	15.87 Brass Insert / Set Screw	Commercial / Acetal	6.35
					<i>0.250</i>	<i>0.438</i>	<i>0.187</i>			<i>0.250</i>
WG1R32-1-030-05HBS0476-ACE	Gear with Hub	30 / 23.83	Right Hand	Single / Type G1	4.763	11.113	4.762	15.87 Brass Insert / Set Screw	Commercial / Acetal	6.35
					<i>0.188</i>	<i>0.438</i>	<i>0.187</i>			<i>0.250</i>
WM1R32-1-021HP04.76-NY	Worm with Single Hub	- / 11.125	Right Hand	Single / Type W2	4.762	21.034	16.272	8.128 / No Locking	Commercial / Acetal	4.762
					<i>0.187</i>	<i>0.828</i>	<i>0.641</i>			<i>0.187</i>

Indicates item not stocked at time of printing - Please enquire for lead time

E&OE Pricing and all details subject to change without notice - Copyright Miniature Bearings Australia Pty Ltd

MBA Size Listings are a guide to sizes only and must not be solely relied on for critical design information.



DISTRIBUTED BY

Ask us to put your name and address here

<http://www.minibearings.com.au/product>

Ph +61 7 3245 7977

Fax +61 7 3245 1017

Catalogue requests to catalogues@minibearings.com.au

