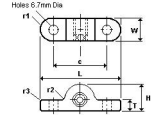




# MBA

## Housings - Bearing - Blocks - Nylon with Stainless Bearing



Moulded Nylon 101 Housing with 440C Stainless Bearing.

Bearing block: Nylon / Bearing: 440C Stainless / Insert: 52100 Chrome Steel.

High Performance. Housing is Electrically Insulating.

Not intended for precision applications.

Inner assembly not fixed in place.

Can be used as a floating assembly or fixed using conventional adhesives or circlips.

### Housings - Bearing - Blocks - Nylon with Stainless Bearing

Part Number	Bore mm	Bearings Qty.	Overall Length (L) mm	Bolt Hole Centres (C) mm	Width (W) mm	Height (H) mm	Foot Thickness (T) mm	Radius 1 (R1) mm	Radius 2 (R2) mm
	<i>inches</i>		<i>inches</i>	<i>inches</i>	<i>inches</i>	<i>inches</i>	<i>inches</i>	<i>inches</i>	<i>inches</i>
# BBN-030-440S	3.00 <i>0.118</i>	1.00	56.00 <i>2.205</i>	38.00 <i>1.496</i>	15.80 <i>0.622</i>	18.00 <i>0.709</i>	8.70 <i>0.343</i>	8.00 <i>0.315</i>	2.00 <i>0.079</i>
# BBN-030-440D	3.00 <i>0.118</i>	2.00	56.00 <i>2.205</i>	38.00 <i>1.496</i>	15.80 <i>0.622</i>	18.00 <i>0.709</i>	8.70 <i>0.343</i>	8.00 <i>0.315</i>	2.00 <i>0.079</i>
# BBN-040-440S	4.00 <i>0.157</i>	1.00	56.00 <i>2.205</i>	38.00 <i>1.496</i>	15.80 <i>0.622</i>	18.00 <i>0.709</i>	8.70 <i>0.343</i>	8.00 <i>0.315</i>	2.00 <i>0.079</i>

# Indicates item not stocked at time of printing - Please enquire for lead time

E&OE Pricing and all details subject to change without notice - Copyright Miniature Bearings Australia Pty Ltd

MBA Size Listings are a guide to sizes only and must not be solely relied on for critical design information.

## Housings - Bearing - Blocks - Nylon with Stainless Bearing

Part Number	Bore mm	Bearings Qty.	Overall Length (L) mm	Bolt Hole Centres (C) mm	Width (W) mm	Height (H) mm	Foot Thickness (T) mm	Radius 1 (R1) mm	Radius 2 (R2) mm
	<i>inches</i>		<i>inches</i>	<i>inches</i>	<i>inches</i>	<i>inches</i>	<i>inches</i>	<i>inches</i>	<i>inches</i>
# BBN-040-440D	4.00 <i>0.157</i>	2.00	56.00 <i>2.205</i>	38.00 <i>1.496</i>	15.80 <i>0.622</i>	18.00 <i>0.709</i>	8.70 <i>0.343</i>	8.00 <i>0.315</i>	2.00 <i>0.079</i>
# BBN-050-440S	5.00 <i>0.197</i>	1.00	56.00 <i>2.205</i>	38.00 <i>1.496</i>	15.80 <i>0.622</i>	18.00 <i>0.709</i>	8.70 <i>0.343</i>	8.00 <i>0.315</i>	2.00 <i>0.079</i>
# BBN-050-440D	5.00 <i>0.197</i>	2.00	56.00 <i>2.205</i>	38.00 <i>1.496</i>	15.80 <i>0.622</i>	18.00 <i>0.709</i>	8.70 <i>0.343</i>	8.00 <i>0.315</i>	2.00 <i>0.079</i>

# Indicates item not stocked at time of printing - Please enquire for lead time

E&OE Pricing and all details subject to change without notice - Copyright Miniature Bearings Australia Pty Ltd

MBA Size Listings are a guide to sizes only and must not be solely relied on for critical design information.



DISTRIBUTED BY

Ask us to put your name and address here

<http://www.minibearings.com.au/product>

Ph +61 7 3245 7977

Fax +61 7 3245 1017

Catalogue requests to [catalogues@minibearings.com.au](mailto:catalogues@minibearings.com.au)

