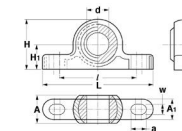




MBA

Housings - Bearing - Blocks - Thermoplastic



Iglide L280 / Igus W300 Ball with Thermoplastic Body.

Maintenance Free, Lightweight, Self-Lubricating.

Compensates for alignment errors.

Temperature Range -40 deg C to +130 deg C.

Max. Static Tensile Strength is Long Term. Info for Short Term also available.

Housings - Bearing - Blocks - Thermoplastic

Part Number	Bore Diameter (d) mm	Overall Length (L) mm	Height (H) mm	Width (W) mm	Overall Width (W2) mm	Distance Base to Centre mm	Max. Angle of Pivot deg	Max. Static Tensile Strength N	Material (Body)	Material (Ball)
	<i>inches</i>	<i>inches</i>	<i>inches</i>	<i>inches</i>	<i>inches</i>	<i>inches</i>				
BB-04.83-L280	4.830 <i>0.190</i>	35.560 <i>1.400</i>	14.730 <i>0.580</i>	5.940 <i>0.234</i>	7.920 <i>0.312</i>	7.370 <i>0.290</i>	25	150	Thermoplastic	L280® Polymer
BB-05.00-L280	5.000 <i>0.197</i>	34.000 <i>1.339</i>	14.000 <i>0.551</i>	6.000 <i>0.236</i>	8.000 <i>0.315</i>	7.000 <i>0.276</i>	30	347	Thermoplastic	L280® Polymer
BB-06.00-L280	6.000 <i>0.236</i>	43.000 <i>1.693</i>	20.000 <i>0.787</i>	7.000 <i>0.276</i>	9.000 <i>0.354</i>	10.000 <i>0.394</i>	29	547	Thermoplastic	L280® Polymer
BB-06.35-L280	6.350 <i>0.250</i>	44.450 <i>1.750</i>	19.810 <i>0.780</i>	6.350 <i>0.250</i>	9.530 <i>0.375</i>	9.910 <i>0.390</i>	25	250	Thermoplastic	L280® Polymer

Indicates item not stocked at time of printing - Please enquire for lead time

E&OE Pricing and all details subject to change without notice - Copyright Miniature Bearings Australia Pty Ltd

MBA Size Listings are a guide to sizes only and must not be solely relied on for critical design information.

Housings - Bearing - Blocks - Thermoplastic

Part Number	Bore Diameter (d) mm	Overall Length (L) mm	Height (H) mm	Width (W) mm	Overall Width (W2) mm	Distance Base to Centre mm	Max. Angle of Pivot deg	Max. Static Tensile Strength N	Material (Body)	Material (Ball)
	<i>inches</i>	<i>inches</i>	<i>inches</i>	<i>inches</i>	<i>inches</i>	<i>inches</i>				
# BB-07.94-L280	7.940 <i>0.313</i>	49.530 <i>1.950</i>	21.840 <i>0.860</i>	7.920 <i>0.312</i>	11.100 <i>0.437</i>	10.920 <i>0.430</i>	25	300	Thermoplastic	L280® Polymer
# BB-08.00-L280	8.000 <i>0.315</i>	47.000 <i>1.850</i>	20.000 <i>0.787</i>	9.000 <i>0.354</i>	12.000 <i>0.472</i>	10.000 <i>0.394</i>	25	649	Thermoplastic	L280® Polymer
# BB-09.53-L280	9.530 <i>0.375</i>	60.960 <i>2.400</i>	27.940 <i>1.100</i>	9.120 <i>0.359</i>	12.700 <i>0.500</i>	13.970 <i>0.550</i>	22	325	Thermoplastic	L280® Polymer
BB-10.00-L280	10.000 <i>0.394</i>	62.000 <i>2.441</i>	28.000 <i>1.102</i>	10.500 <i>0.413</i>	14.000 <i>0.551</i>	14.000 <i>0.551</i>	25	747	Thermoplastic	L280® Polymer
# BB-11.11-L280	11.110 <i>0.437</i>	63.500 <i>2.500</i>	28.960 <i>1.140</i>	10.310 <i>0.406</i>	14.270 <i>0.562</i>	14.480 <i>0.570</i>	22	350	Thermoplastic	L280® Polymer
# BB-12.00-L280	12.000 <i>0.472</i>	65.000 <i>2.559</i>	28.000 <i>1.102</i>	12.000 <i>0.472</i>	26.000 <i>1.024</i>	14.000 <i>0.551</i>	25	1099	Thermoplastic	L280® Polymer
# BB-12.70-L280	12.700 <i>0.500</i>	71.120 <i>2.800</i>	30.480 <i>1.200</i>	11.510 <i>0.453</i>	15.88 <i>0.625</i>	15.24 <i>0.600</i>	22	400	Thermoplastic	L280® Polymer
# BB-14.00-L280	14.000 <i>0.551</i>	82.000 <i>3.228</i>	36.000 <i>1.417</i>	13.500 <i>0.531</i>	29.000 <i>1.142</i>	18.000 <i>0.709</i>	23	1197	Thermoplastic	L280® Polymer
# BB-15.88-L280	15.880 <i>0.625</i>	85.090 <i>3.350</i>	35.560 <i>1.400</i>	12.290 <i>0.484</i>	19.050 <i>0.750</i>	17.780 <i>0.700</i>	22	450	Thermoplastic	L280® Polymer
# BB-16.00-L280	16.000 <i>0.630</i>	86.000 <i>3.386</i>	36.000 <i>1.417</i>	15.000 <i>0.591</i>	21.000 <i>0.827</i>	18.000 <i>0.709</i>	23	1499	Thermoplastic	L280® Polymer

Indicates item not stocked at time of printing - Please enquire for lead time

E&OE Pricing and all details subject to change without notice - Copyright Miniature Bearings Australia Pty Ltd

MBA Size Listings are a guide to sizes only and must not be solely relied on for critical design information.

Housings - Bearing - Blocks - Thermoplastic

Part Number	Bore Diameter (d) mm	Overall Length (L) mm	Height (H) mm	Width (W) mm	Overall Width (W2) mm	Distance Base to Centre mm	Max. Angle of Pivot deg	Max. Static Tensile Strength N	Material (Body)	Material (Ball)
	<i>inches</i>	<i>inches</i>	<i>inches</i>	<i>inches</i>	<i>inches</i>	<i>inches</i>				
# BB-18.00-L280	18.000 <i>0.709</i>	93.000 <i>3.661</i>	44.000 <i>1.732</i>	16.500 <i>0.650</i>	23.000 <i>0.906</i>	22.000 <i>0.866</i>	23	1748	Thermoplastic	L280® Polymer
# BB-19.05-L280	19.050 <i>0.750</i>	95.250 <i>3.750</i>	43.690 <i>1.720</i>	15.060 <i>0.593</i>	22.230 <i>0.875</i>	21.840 <i>0.860</i>	22	750	Thermoplastic	L280® Polymer
# BB-20.00-L280	20.000 <i>0.787</i>	98.000 <i>3.858</i>	44.000 <i>1.732</i>	18.000 <i>0.709</i>	25.000 <i>0.984</i>	22.000 <i>0.866</i>	23	2349	Thermoplastic	L280® Polymer
BB-22.00-L280	22.000 <i>0.866</i>	108.000 <i>4.252</i>	48.000 <i>1.890</i>	20.000 <i>0.787</i>	28.000 <i>1.102</i>	24.000 <i>0.945</i>	22	3047	Thermoplastic	L280® Polymer
# BB-25.00-L280	25.000 <i>0.984</i>	124.000 <i>4.882</i>	54.000 <i>2.126</i>	22.000 <i>0.866</i>	31.000 <i>1.220</i>	27.000 <i>1.063</i>	22	3296	Thermoplastic	L280® Polymer
# BB-25.40-L280	25.400 <i>1.000</i>	127.000 <i>5.000</i>	55.880 <i>2.200</i>	25.530 <i>1.005</i>	34.930 <i>1.375</i>	27.940 <i>1.100</i>	20	980	Thermoplastic	L280® Polymer
# BB-30.00-L280	30.000 <i>1.181</i>	139.000 <i>5.472</i>	64.000 <i>2.520</i>	25.000 <i>0.984</i>	37.000 <i>1.457</i>	32.000 <i>1.260</i>	22	4048	Thermoplastic	L280® Polymer

Indicates item not stocked at time of printing - Please enquire for lead time

E&OE Pricing and all details subject to change without notice - Copyright Miniature Bearings Australia Pty Ltd

MBA Size Listings are a guide to sizes only and must not be solely relied on for critical design information.



DISTRIBUTED BY

Ask us to put your name and address here

<http://www.minibearings.com.au/product>

Ph +61 7 3245 7977

Fax +61 7 3245 1017

Catalogue requests to catalogues@minibearings.com.au
