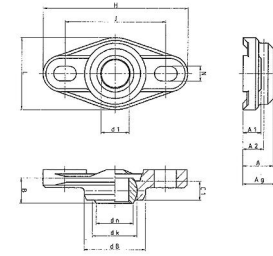




MBA

Housings - Bearing - Flanged - 2 Bolt Hole - W300



With integral self aligning plain bearing.

Housing: Igumid G.

Ball: Highly wear resistant Iglidur W300.

Housings - Bearing - Flanged - 2 Bolt Hole - W300

Part Number	Bore (d1) mm	Width (L) mm	Length (H) mm	Overall Height (Ag) mm	Bolt Hole Centres (J) mm	Base Height (A1) mm	Max. Pivot Angle Deg	To Suit Bearing	Bolt Hole Size (s) mm
	<i>inches</i>	<i>inches</i>	<i>inches</i>	<i>inches</i>	<i>inches</i>	<i>inches</i>			<i>inches</i>
FL-04-W300	4.00 <i>0.157</i>	16.00 <i>0.630</i>	33.800 <i>1.331</i>	8.50 <i>0.335</i>	24.00 <i>0.945</i>	4.50 <i>0.177</i>	33	Integral	3.2 x 5.0
# FL-05-W300	5.00 <i>0.197</i>	16.000 <i>0.630</i>	33.800 <i>1.331</i>	8.500 <i>0.335</i>	24.000 <i>0.945</i>	4.500 <i>0.177</i>	33	Integral	3.2 x 5.0
FL-06-W300	6.00 <i>0.236</i>	16.000 <i>0.630</i>	33.800 <i>1.331</i>	8.500 <i>0.335</i>	24.000 <i>0.945</i>	4.500 <i>0.177</i>	27	Integral	3.2 x 5.5
# FL-08-W300	8.00 <i>0.315</i>	22.000 <i>0.866</i>	44.200 <i>1.740</i>	10.500 <i>0.413</i>	31.000 <i>1.220</i>	5.500 <i>0.217</i>	24	Integral	4.3 x 6.5

Indicates item not stocked at time of printing - Please enquire for lead time

E&OE Pricing and all details subject to change without notice - Copyright Miniature Bearings Australia Pty Ltd

MBA Size Listings are a guide to sizes only and must not be solely relied on for critical design information.

Housings - Bearing - Flanged - 2 Bolt Hole - W300

Part Number	Bore (d1) mm	Width (L) mm	Length (H) mm	Overall Height (Ag) mm	Bolt Hole Centres (J) mm	Base Height (A1) mm	Max. Pivot Angle Deg	To Suit Bearing	Bolt Hole Size (s) mm
	<i>inches</i>	<i>inches</i>	<i>inches</i>	<i>inches</i>	<i>inches</i>	<i>inches</i>			<i>inches</i>
FL-10-W300	10.00 <i>0.394</i>	26.000 <i>1.024</i>	52.000 <i>2.047</i>	12.000 <i>0.472</i>	36.000 <i>1.417</i>	6.500 <i>0.256</i>	24	Integral	5.3 x 8.0
# FL-12-W300	12.00 <i>0.472</i>	31.000 <i>1.220</i>	56.700 <i>2.232</i>	13.000 <i>0.512</i>	41.000 <i>1.614</i>	7.000 <i>0.276</i>	21	Integral	5.3 x 8.0
# FL-15-W300	15.00 <i>0.591</i>	36.000 <i>1.417</i>	68.600 <i>2.701</i>	15.500 <i>0.610</i>	50.000 <i>1.969</i>	8.500 <i>0.335</i>	19	Integral	6.4 x 10.0
# FL-16-W300	16.00 <i>0.630</i>	38.000 <i>1.496</i>	72.600 <i>2.858</i>	17.500 <i>0.689</i>	53.000 <i>2.087</i>	10.000 <i>0.394</i>	24	Integral	6.4 x 10.1
# FL-17-W300	17.00 <i>0.669</i>	41.000 <i>1.614</i>	74.600 <i>2.937</i>	18.000 <i>0.709</i>	55.000 <i>2.165</i>	10.000 <i>0.394</i>	20	Integral	6.4 x 10.2
# FL-20-W300	20.00 <i>0.787</i>	47.000 <i>1.850</i>	89.000 <i>3.504</i>	20.000 <i>0.787</i>	65.000 <i>2.559</i>	11.000 <i>0.433</i>	17	Integral	8.4 x 12.5
# FL-25-W300	25.00 <i>0.984</i>	58.500 <i>2.303</i>	101.000 <i>3.976</i>	25.000 <i>0.984</i>	75.000 <i>2.953</i>	14.000 <i>0.551</i>	14	Integral	8.4 x 12.6
# FL-30-W300	30.00 <i>1.181</i>	65.000 <i>2.559</i>	118.000 <i>4.646</i>	26.000 <i>1.024</i>	87.500 <i>3.445</i>	15.000 <i>0.591</i>	12	Integral	10.5 x 16.0

Indicates item not stocked at time of printing - Please enquire for lead time

E&OE Pricing and all details subject to change without notice - Copyright Miniature Bearings Australia Pty Ltd

MBA Size Listings are a guide to sizes only and must not be solely relied on for critical design information.



DISTRIBUTED BY

Ask us to put your name and address here

<http://www.minibearings.com.au/product>

Ph +61 7 3245 7977

Fax +61 7 3245 1017

Catalogue requests to catalogues@minibearings.com.au

