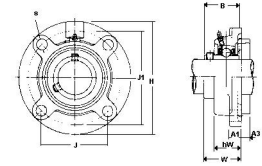




# MBA

## Housings - Bearing - Flanged - Round - Cast Iron



Lubrication Groove.

Bearings sold separately.

Larger sizes available on request.

Use with steel bearing inserts for cast iron housings.

This catalogue to be read in conjunction with information at

<http://www.minibearings.com.au//partslist/bearingsforcastironhousings/insertbearingsandhousings/wide/1/>

<http://www.minibearings.com.au//partslist/bearingsforcastironhousingsplastic/insertbearingsandhousings/wide/1/>

### Housings - Bearing - Flanged - Round - Cast Iron

Part Number	Height (H) mm <i>inches</i>	Ass. Width to Base (W) mm <i>inches</i>	Width of Spigot (a3) mm <i>inches</i>	Bolt Circle Diameter (J1) mm <i>inches</i>	Base Width (A1) mm <i>inches</i>	Bearing Width (B) mm <i>inches</i>	To Suit Bearing	Bolt Hole Size (s) mm <i>inches</i>	Bolt Hole Centres (J) mm <i>inches</i>	Hsg. Width (excl. Spigot hW) mm <i>inches</i>
FC204	100 <i>3.937</i>	28.300 <i>1.114</i>	5.000 <i>0.197</i>	78.000 <i>3.071</i>	7.000 <i>0.276</i>	31.000 <i>1.220</i>	UC201 - UC202 - UC203 - UC204	12.000 <i>0.472</i>	55.100 <i>2.169</i>	20.50 <i>0.807</i>
# FC205	115.000 <i>4.528</i>	29.700 <i>1.169</i>	6.000 <i>0.236</i>	90.000 <i>3.543</i>	7.000 <i>0.276</i>	34.000 <i>1.339</i>	UC205	12.000 <i>0.472</i>	63.600 <i>2.504</i>	21.000 <i>0.827</i>

# Indicates item not stocked at time of printing - Please enquire for lead time

E&OE Pricing and all details subject to change without notice - Copyright Miniature Bearings Australia Pty Ltd

MBA Size Listings are a guide to sizes only and must not be solely relied on for critical design information.

## Housings - Bearing - Flanged - Round - Cast Iron

Part Number	Height (H) mm	Ass. Width to Base (W) mm	Width of Spigot (a3) mm	Bolt Circle Diameter (J1) mm	Base Width (A1) mm	Bearing Width (B) mm	To Suit Bearing	Bolt Hole Size (s) mm	Bolt Hole Centres (J) mm	Hsg. Width (excl. Spigot hW) mm
	<i>inches</i>	<i>inches</i>	<i>inches</i>	<i>inches</i>	<i>inches</i>	<i>inches</i>		<i>inches</i>	<i>inches</i>	<i>inches</i>
# FC206	125.000	32.200	8.000	100.000	8.000	38.100	UC206	12.000	70.700	23.000
	<i>4.921</i>	<i>1.268</i>	<i>0.315</i>	<i>3.937</i>	<i>0.315</i>	<i>1.500</i>		<i>0.472</i>	<i>2.783</i>	<i>0.906</i>

# Indicates item not stocked at time of printing - Please enquire for lead time

E&OE Pricing and all details subject to change without notice - Copyright Miniature Bearings Australia Pty Ltd

MBA Size Listings are a guide to sizes only and must not be solely relied on for critical design information.



DISTRIBUTED BY

Ask us to put your name and address here

<http://www.minibearings.com.au/product>

Ph +61 7 3245 7977

Fax +61 7 3245 1017

Catalogue requests to [catalogues@minibearings.com.au](mailto:catalogues@minibearings.com.au)

