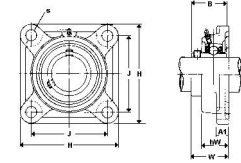




MBA

Housings - Bearing - Flanged - Square - Cast Iron



Lubrication Groove.

Bearings sold separately.

Larger sizes available on request.

Use with steel bearing inserts for cast iron housings.

This catalogue to be read in conjunction with information at

<http://www.minibearings.com.au//partslist/bearingsforcastironhousings/insertbearingsandhousings/wide/1/>

<http://www.minibearings.com.au//partslist/bearingsforcastironhousingsplastic/insertbearingsandhousings/wide/1/>

Housings - Bearing - Flanged - Square - Cast Iron

Part Number	Height (H) mm	Width - Assembled (W) mm	Base Width (A1) mm	Bolt Hole Centres (J) mm	Housing Width (hW) mm	Bearing Width (B) mm	To Suit Bearing	Bolt Hole Size (s) mm
	<i>inches</i>	<i>inches</i>	<i>inches</i>	<i>inches</i>	<i>inches</i>	<i>inches</i>		<i>inches</i>
# F204	86.000	33.300	12.000	64.000	25.500	31.000	UC201 - UC202 - UC203 - UC204	12.000
	3.386	1.311	0.472	2.520	1.004	1.220		0.472
F205	95.000	35.700	14.000	70.000	27.000	34.000	UC205	12.000
	3.740	1.406	0.551	2.756	1.063	1.339		0.472
F206	108.000	40.200	14.000	80.000	31.000	38.100	UC206	12.000
	4.252	1.583	0.551	3.150	1.220	1.500		0.472

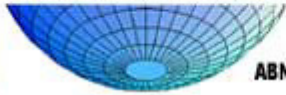
Indicates item not stocked at time of printing - Please enquire for lead time

E&OE Pricing and all details subject to change without notice - Copyright Miniature Bearings Australia Pty Ltd

MBA Size Listings are a guide to sizes only and must not be solely relied on for critical design information.

MBA

MINIATURE BEARINGS AUSTRALIA PTY LTD



ABN 94 069 113 800



DISTRIBUTED BY

Ask us to put your name and address here

<http://www.minibearings.com.au/product>

Ph +61 7 3245 7977

Fax +61 7 3245 1017

Catalogue requests to catalogues@minibearings.com.au

SDPSI
Stock Drive Products / Spring Instrument

JK

ANOTHER QUALITY PRODUCT BY
MOLYTEC
Australia

Origin
BEARING

WIB

THOMSON

EZO



 **myonic**
solutions in microspace

rino



inox
Quality Products

GRW

DualVee^x
Bishop-Wisecarver Corp.

ondrives
Precision Manufacturing

RMB

SOLARBOTICS^{INTL}

KSK
BALL BEARING