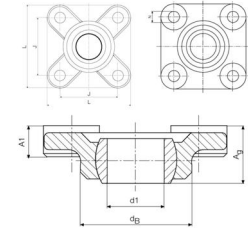




# MBA

## Housings - Bearing - Flanged - Square - W300



With integral self aligning plain bearing.

Housing : Igumid G.

Ball : Highly wear resistant Iglidur W300.

### Housings - Bearing - Flanged - Square - W300

Part Number	Bore (d1) mm	Base Length (L) mm	Width - Assembled (Ag) mm	Base Width (A1) mm	Bolt Hole Centres (J) mm	Overall Height (Ag) mm	To Suit Bearing	Bolt Hole Size (N) mm
	<i>inches</i>	<i>inches</i>	<i>inches</i>	<i>inches</i>	<i>inches</i>	<i>inches</i>		<i>inches</i>
# F-04-W300	4.00 <i>0.157</i>	25.00 <i>0.984</i>	8.50 <i>0.335</i>	4.50 <i>0.177</i>	17.00 <i>0.669</i>	8.5 <i>0.335</i>	Integral	3.2 <i>0.126</i>
# F-05-W300	5.00 <i>0.197</i>	25.00 <i>0.984</i>	8.50 <i>0.335</i>	4.50 <i>0.177</i>	17.00 <i>0.669</i>	8.5 <i>0.335</i>	Integral	3.2 <i>0.126</i>
# F-06-W300	6.00 <i>0.236</i>	25.00 <i>0.984</i>	8.50 <i>0.335</i>	4.50 <i>0.177</i>	17.00 <i>0.669</i>	8.5 <i>0.335</i>	Integral	3.2 <i>0.126</i>
# F-08-W300	8.00 <i>0.315</i>	33.00 <i>1.299</i>	10.50 <i>0.413</i>	5.50 <i>0.217</i>	22.00 <i>0.866</i>	10.5 <i>0.413</i>	Integral	4.3 <i>0.169</i>

# Indicates item not stocked at time of printing - Please enquire for lead time

E&OE Pricing and all details subject to change without notice - Copyright Miniature Bearings Australia Pty Ltd

MBA Size Listings are a guide to sizes only and must not be solely relied on for critical design information.

## Housings - Bearing - Flanged - Square - W300

Part Number	Bore (d1) mm <i>inches</i>	Base Length (L) mm <i>inches</i>	Width - Assembled (Ag) mm <i>inches</i>	Base Width (A1) mm <i>inches</i>	Bolt Hole Centres (J) mm <i>inches</i>	Overall Height (Ag) mm <i>inches</i>	To Suit Bearing	Bolt Hole Size (N) mm <i>inches</i>
F-10-W300	10.00 <i>0.394</i>	38.00 <i>1.496</i>	12.00 <i>0.472</i>	6.50 <i>0.256</i>	26.00 <i>1.024</i>	12.0 <i>0.472</i>	Integral	5.3 <i>0.209</i>
# F-12-W300	12.00 <i>0.472</i>	40.00 <i>1.575</i>	13.00 <i>0.512</i>	7.00 <i>0.276</i>	28.00 <i>1.102</i>	13.0 <i>0.512</i>	Integral	5.3 <i>0.209</i>
# F-15-W300	15.00 <i>0.591</i>	49.00 <i>1.929</i>	15.50 <i>0.610</i>	8.50 <i>0.335</i>	34.00 <i>1.339</i>	15.5 <i>0.610</i>	Integral	6.4 <i>0.252</i>
# F-16-W300	16.00 <i>0.630</i>	52.00 <i>2.047</i>	16.50 <i>0.650</i>	9.00 <i>0.354</i>	36.00 <i>1.417</i>	16.5 <i>0.650</i>	Integral	6.4 <i>0.252</i>
# F-17-W300	17.00 <i>0.669</i>	54.00 <i>2.126</i>	18.00 <i>0.709</i>	10.00 <i>0.394</i>	38.00 <i>1.496</i>	18.0 <i>0.709</i>	Integral	6.4 <i>0.252</i>
# F-20-W300	20.00 <i>0.787</i>	65.00 <i>2.559</i>	20.00 <i>0.787</i>	11.00 <i>0.433</i>	45.00 <i>1.772</i>	20.0 <i>0.787</i>	Integral	8.4 <i>0.331</i>
# F-25-W300	25.00 <i>0.984</i>	74.00 <i>2.913</i>	25.00 <i>0.984</i>	14.00 <i>0.551</i>	52.00 <i>2.047</i>	25.0 <i>0.984</i>	Integral	8.4 <i>0.331</i>
# F-30-W300	30.00 <i>1.181</i>	85.00 <i>3.346</i>	26.00 <i>1.024</i>	15.00 <i>0.591</i>	60.00 <i>2.362</i>	26.0 <i>1.024</i>	Integral	10.5 <i>0.413</i>

# Indicates item not stocked at time of printing - Please enquire for lead time

E&OE Pricing and all details subject to change without notice - Copyright Miniature Bearings Australia Pty Ltd

MBA Size Listings are a guide to sizes only and must not be solely relied on for critical design information.



DISTRIBUTED BY

Ask us to put your name and address here

<http://www.minibearings.com.au/product>

Ph +61 7 3245 7977

Fax +61 7 3245 1017

Catalogue requests to [catalogues@minibearings.com.au](mailto:catalogues@minibearings.com.au)

