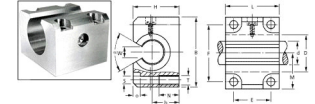




MBA

Housings - Linear - Open (Type 2)



Bearings not included.

Material: Aluminium.

Adhesive may be necessary to secure bearing in housing.

These lightweight but heavy duty Aluminium sets offer high accuracy.

They consist of a corrosion resistant, highly rigid Aluminium housing.

For use with open linear bearings with OD matching the housing bore dimension D.

Housings - Linear - Open (Type 2)

Part Number	Suits Bearing (d x D) mm	Width (B) mm	Height (H) mm	Centre Height (h) mm	Length (L) mm	Centre Width (M) mm	Screw Size	Opening Width (W) mm	Max. Rail Angle DEG	Load Capacity (C / Co) N
	<i>inches</i>	<i>inches</i>	<i>inches</i>	<i>inches</i>	<i>inches</i>	<i>inches</i>		<i>inches</i>		
# AE37-912	12.0 x 22.0	42.0	30.0	18.0	39.0	21.0	M5	7.5	78	570 / 800
		<i>1.654</i>	<i>1.181</i>	<i>0.709</i>	<i>1.535</i>	<i>0.827</i>		<i>0.295</i>		
# AE37-916	16.0 x 26.0	52.0	35.0	22.0	43.0	26.0	M6	10.0	78	800 / 940
		<i>2.047</i>	<i>1.378</i>	<i>0.866</i>	<i>1.693</i>	<i>1.024</i>		<i>0.394</i>		
# AE37-920	20.0 x 32.0	60.0	42.0	25.0	54.0	30.0	M8	10.0	60	900 / 1400
		<i>2.362</i>	<i>1.654</i>	<i>0.984</i>	<i>2.126</i>	<i>1.181</i>		<i>0.394</i>		

Indicates item not stocked at time of printing - Please enquire for lead time

E&OE Pricing and all details subject to change without notice - Copyright Miniature Bearings Australia Pty Ltd

MBA Size Listings are a guide to sizes only and must not be solely relied on for critical design information.

Housings - Linear - Open (Type 2)

Part Number	Suits Bearing (d x D) mm	Width (B) mm	Height (H) mm	Centre Height (h) mm	Length (L) mm	Centre Width (M) mm	Screw Size	Opening Width (W) mm	Max. Rail Angle DEG	Load Capacity (C / Co) N
	<i>inches</i>	<i>inches</i>	<i>inches</i>	<i>inches</i>	<i>inches</i>	<i>inches</i>		<i>inches</i>		
# AE37-925	25.0 x 40.0	76.0 <i>2.992</i>	51.0 <i>2.008</i>	30.0 <i>1.181</i>	67.0 <i>2.638</i>	38.0 <i>1.496</i>	M10	12.50 <i>0.492</i>	60	1100 / 1700
# AE37-930	30.0 x 47.0	86.0 <i>3.386</i>	60.0 <i>2.362</i>	35.0 <i>1.378</i>	79.0 <i>3.110</i>	43.0 <i>1.693</i>	M10	12.50 <i>0.492</i>	50	1700 / 3000
# AE37-940	40.0 x 62.0	108.0 <i>4.252</i>	77.0 <i>3.031</i>	45.0 <i>1.772</i>	91.0 <i>3.583</i>	54.0 <i>2.126</i>	M12	16.80 <i>0.661</i>	50	2300 / 4700
# AE37-950	50.0 x 75.0	130.0 <i>5.118</i>	88.0 <i>3.465</i>	50.0 <i>1.969</i>	113.0 <i>4.449</i>	65.0 <i>2.559</i>	M16	21.0 <i>0.827</i>	50	4100 / 8300

Indicates item not stocked at time of printing - Please enquire for lead time

E&OE Pricing and all details subject to change without notice - Copyright Miniature Bearings Australia Pty Ltd

MBA Size Listings are a guide to sizes only and must not be solely relied on for critical design information.



DISTRIBUTED BY

Ask us to put your name and address here

<http://www.minibearings.com.au/product>

Ph +61 7 3245 7977

Fax +61 7 3245 1017

Catalogue requests to catalogues@minibearings.com.au

